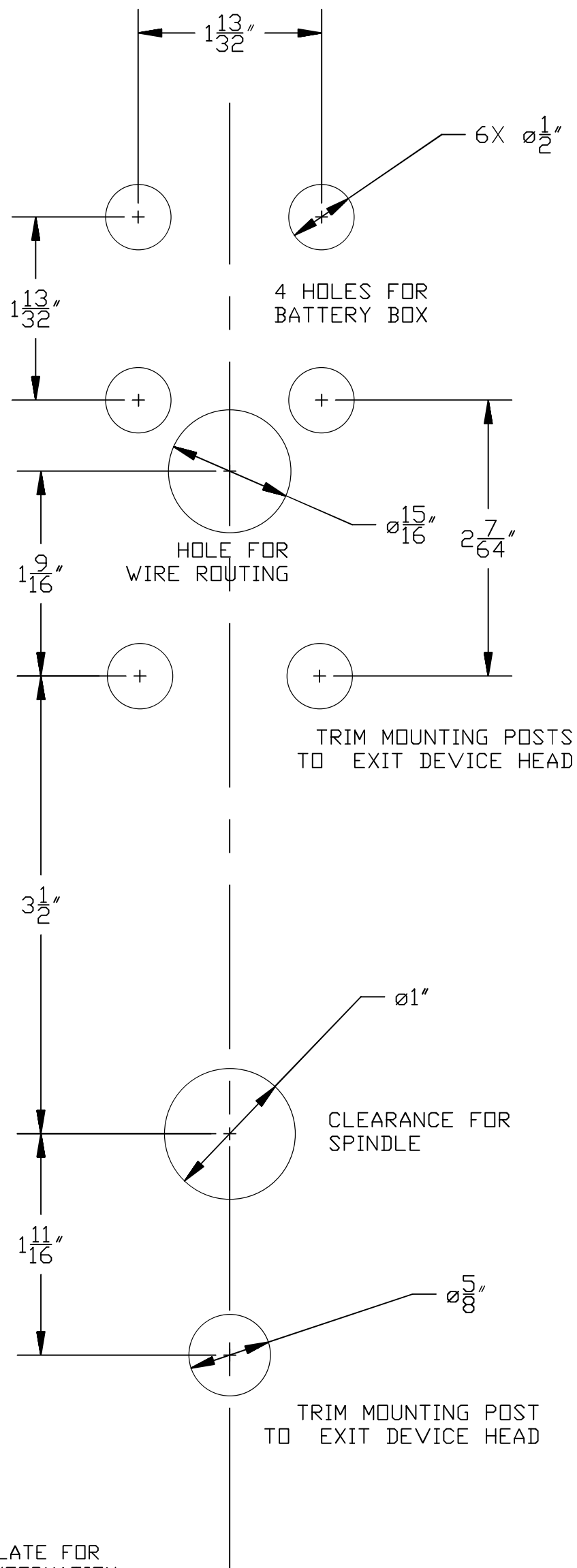


TEMPLATE FOR XRF & XDK
ELECTRONIC TRIM FOR THE
ED5000 SERIES EXIT
DEVICE



SEE EXIT DEVICE TEMPLATE FOR
BACKSET AND STRIKE INFORMATION

RESPONSIBILITY

Door and Frame Manufacturers are responsible for providing adequate construction or reinforcements for proper installation of hardware shown. All architectural builders hardware must be installed on properly reinforced doors and frames, regardless of the type, material, or method of construction.