

WSP Keymaker

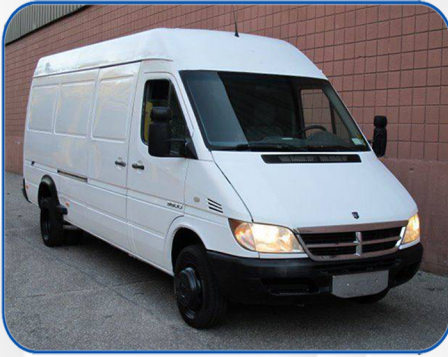
for MB KR55 Remote Keymaker



For: Mercedes Sprinter USA
Mercedes Sprinter Europe

WSP Keymaker

Currently supported models:



**Mercedes Sprinter
USA type
2003 - 2007**



**Mercedes Sprinter
Europe type
1997 - 2005**



**WSP
module location**

1. Adding the key

You must have at least one working remote for the vehicle.
Removal of WSP immo module in this case is not required.

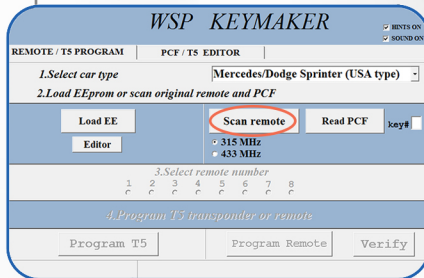
**All steps must be completed in order,
no steps can be skipped/altered. Please read carefully.**



1. Start WSP KeyMaker software.

2. Select "PCF/REMOTE" tab.

3. Choose model of the vehicle and frequency of the key. Usually for US and Asian market it's 315 MHz, for the rest of the World - 433 Mhz. After choosing of vehicle type, Keymaker will confirm your choice by voice.



4. Click "Scan remote" button.

5. Put the original working remote into Keymaker's programming slot and press "Lock" or "Unlock" button on remote. Original key number will be displayed and selection field will become active. Select one of the available key slots in "Select remote number" field.



6. Click "Read PCF" button.

Mercedes Sprinter W901 - W905

WSP KEYMAKER SOUND ON

REMOTE / TS PROGRAM PCF / TS EDITOR

1. Select car type Mercedes Spntiner (Europe type)

2. Load EEPROM or scan original remote and PCF

Load EE Scan remote Read PCF key# 1

Editor 315 MHz 433 MHz OPEN BUTTON

3. Select remote number

1 2 3 4 5 6 7 8

4. Program T5 transponder or remote

Program T5 Program Remote Verify



WSP KEYMAKER SOUND ON

REMOTE / TS PROGRAM PCF / TS EDITOR

1. Select car type Mercedes Spntiner (Europe type)

2. Load EEPROM or scan original remote and PCF

Load EE Scan remote Read PCF key# 1

Editor 315 MHz 433 MHz OPEN BUTTON

3. Select remote number

1 2 3 4 5 6 7 8

4. Program T5 transponder or remote

Program T5 Program Remote Verify

WSP KEYMAKER SOUND ON

REMOTE / TS PROGRAM PCF / TS EDITOR

1. Select car type Mercedes Spntiner (Europe type)

2. Load EEPROM or scan original remote and PCF

Load EE Scan remote Read PCF key# 1

Editor 315 MHz 433 MHz OPEN BUTTON

3. Select remote number

1 2 3 4 5 6 7 8

4. Program T5 transponder or remote

Program T5 Program Remote Verify

- Put a new remote in KeyMaker's programming coil as shown.
- Click **“PROGRAM REMOTE”** button.
- Press and hold **“Unlock”** button on the new remote until you will hear confirmation sound. Blue light will flash and message **“OK, please click verify button”** will appear.
- Click **“VERIFY”** button. Now press any button on the new fob. **“OK”** message and sound will confirm successful programming.
- Transponder programming.** Click **“PROGRAM T5”** button. **“OK”** message and **“start”** sound will confirm successful transponder programming.
- Cut the key blade.
- Now go to the vehicle with new key. Press **“Unlock”** button 3-4 times when standing next to the van. Remote should start working. Check all functions of the key. Programming is complete.

2. All remotes are lost or no working remote available

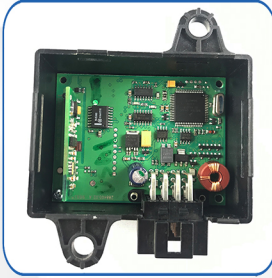
In this case WSP immo module removal is required. EEprom memory must be read and saved on the computer.

We recommend Orange5, Smok (MBprog) or Carprog programmer with special Click'n Go adapter (corresponding to your WSP immo module model). In this case no desoldering required, memory safely can be read. Of course, you can use another EEprom programmers at your own risk.

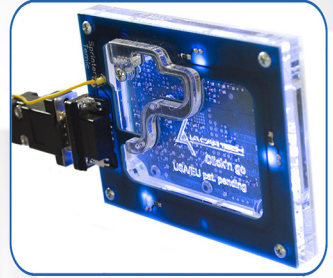
All steps must be completed in order, no steps can be skipped/alterd. Please read carefully.



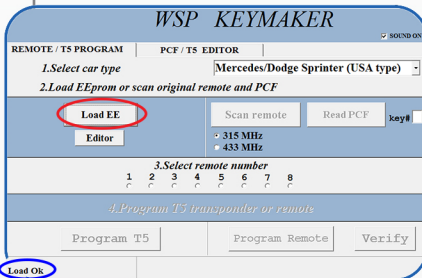
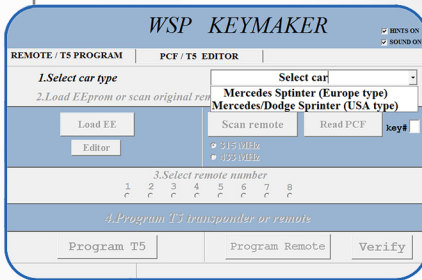
WSP IMMO location



WSP IMMO Box



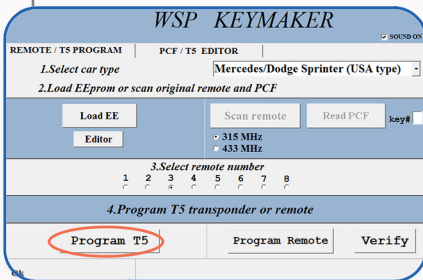
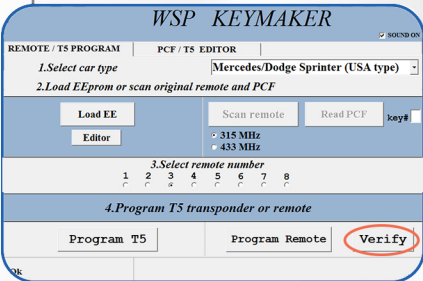
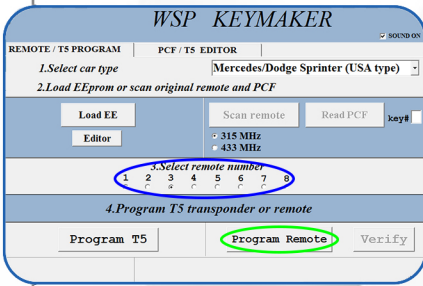
Click'n go adapter



1. According to EEprom programmer manual, read and save EEprom to your computer.
2. Start WSP Keymaker software.
3. Select your vehicle.
4. On "REMOTE/T5 PROGRAM" tab click "LOAD EE" button.
5. Select WSP EEprom file you saved on step 1.
6. Check if your EEprom was read properly. In the left bottom corner "Load OK" message should appear. If there is "Error" message - EEprom wasn't read properly. Read and save EEprom again

using Orange5, Smok (MBprog) or Carprog with proper Click'n Go adapter and start again from step 2.

Mercedes Sprinter W901 - W905



7. Select one of the available key slots in “**Select remote number**” field.
8. Put a new remote in KeyMaker's programming coil as shown.
9. Click “**PROGRAM REMOTE**” button.
10. Press and hold “Unlock” button on the new remote until you will hear confirmation sound. Blue light will flash and message “OK, please click verify button” will appear.
11. Click “**VERIFY**” button. Now press any button on the new fob. “OK” message and sound will confirm successful programming.
12. Transponder programming. Put new key with already programmed remote in Keymaker's programming coil. Click “**PROGRAM T5**” button. “OK” message and “start” sound will confirm successful transponder programming.
13. Cut the key blade.
14. Now go to the vehicle with new key. Press “Lock” or “Unlock” button 3-4 times when standing next to the van. Remote should start working. Check all functions of the key.