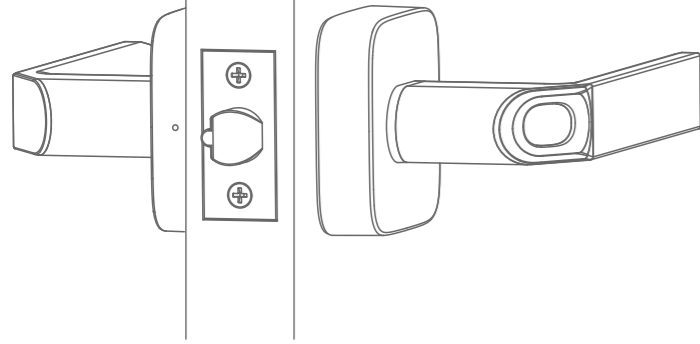




Ultraloq UL1

Installation & User Guide

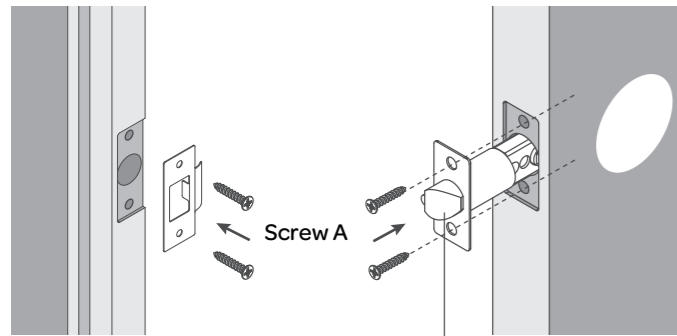
(V1.2)



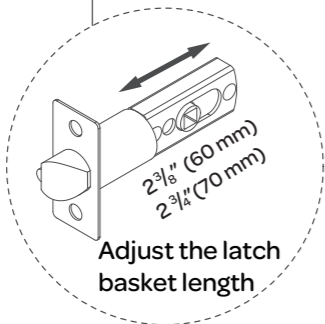
www.u-tec.com/lock/ul1/installation
Visit this link to watch the installation video guide

ultral**oq**

STEP 1

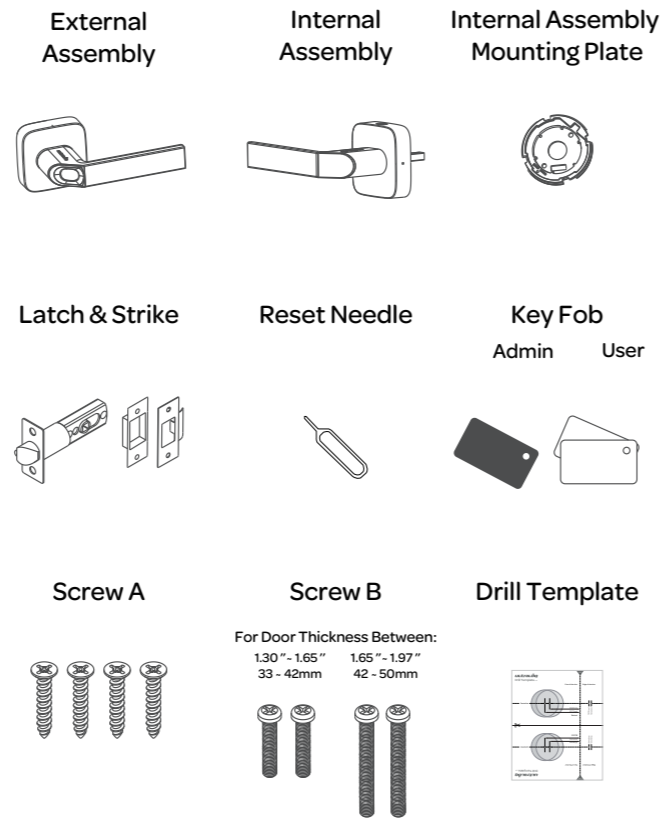


1. Insert Latch and Strike. Please align the Latch with the door's edge.
2. Tighten 2 Screw A on each side to fix the position.



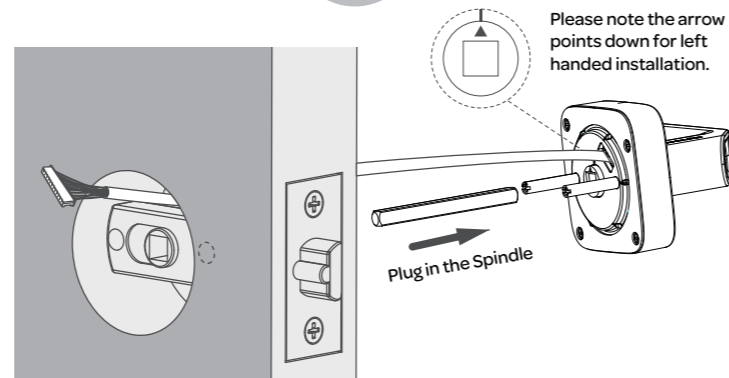
Adjust the latch basket length

What's in the Box

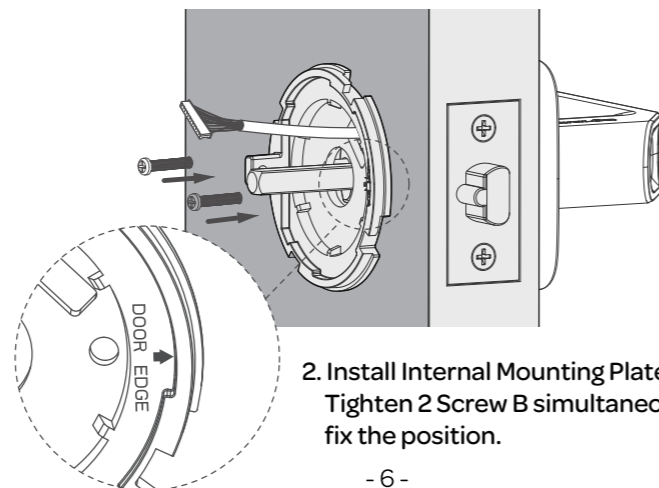


- 2 -

STEP 2

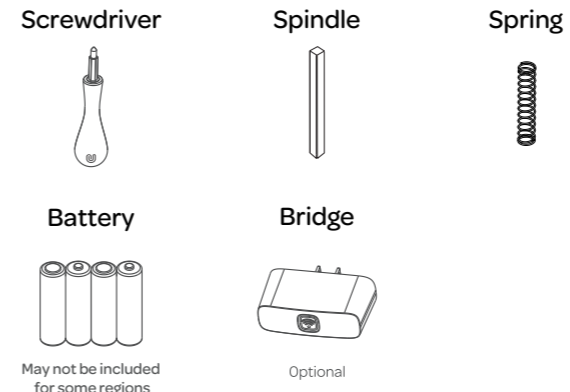


1. Install External Assembly. Plug in the Spindle, Align its two sticks with two holes on the latch. Hole's arrow should be directed as illustrated.



2. Install Internal Mounting Plate. Tighten 2 Screw B simultaneously to fix the position.

What's in the Box

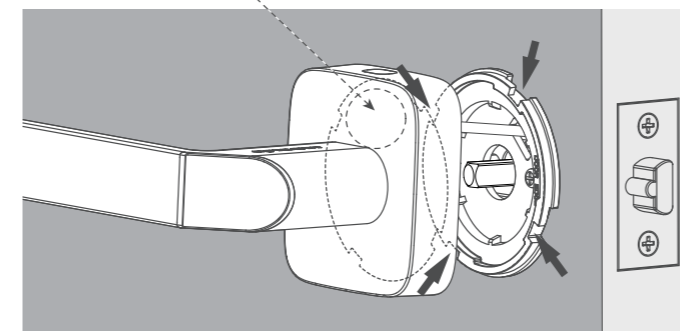
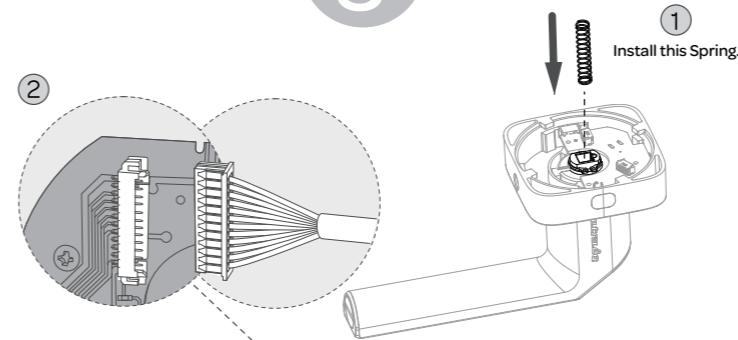


Notes

- Install and test the lock with door open to avoid being locked out.
- Please follow the instruction in order.
- Need Help? Please contact customer support before returning the product.
Visit www.u-tec.com/support
Email support@u-tec.com
- Operating temperature:
External Assembly: -4 °F - 149 °F (-20 °C ~ 65 °C)
Internal Assembly: 14 °F ~ 131 °F (-10 °C ~ 55 °C)

- 3 -

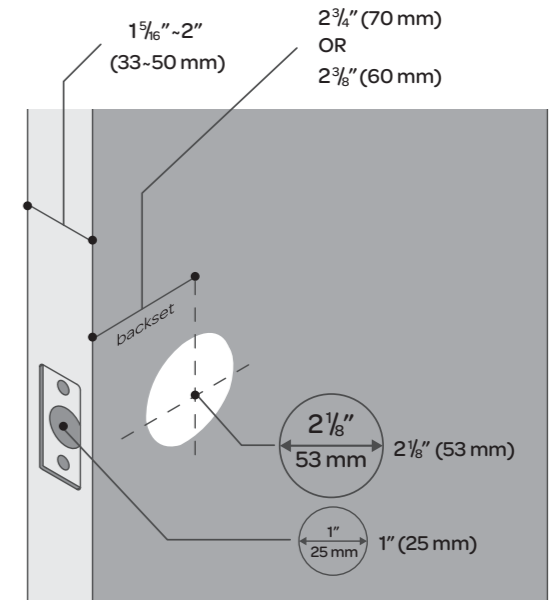
STEP 3



1. Install the Spring into Internal Assembly.
2. Loose the side screw, and push the metal block all the way into the slot.
3. On Internal Assembly, connect the wire to the receiver.
4. Align and insert the Spindle into the hole.
5. Match and connect the gaps between Internal Mounting Plate and Internal Assembly. **Internal Assembly should be tilted around 30 degrees to click the gaps.**

Preparing Door

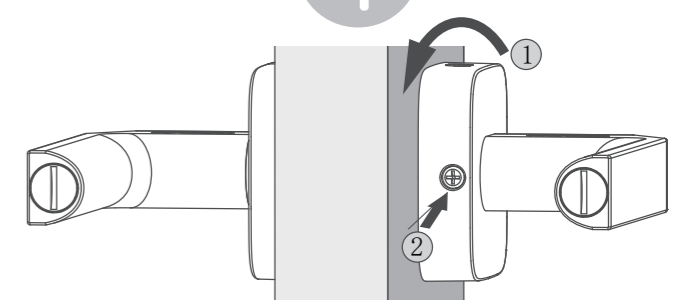
Please check the door's dimensions.



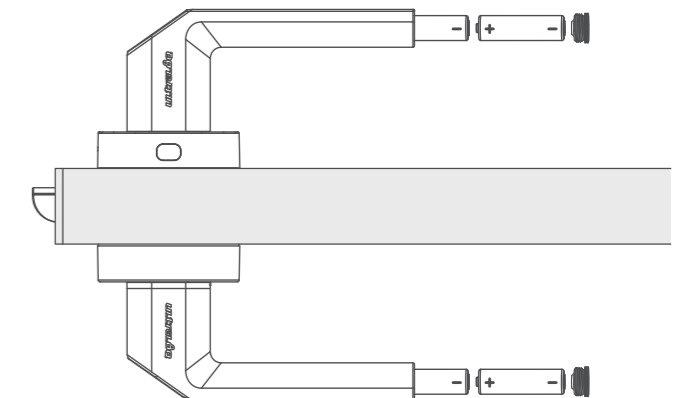
If you are installing UL1 on a new door, please refer to the Drill Template.

- 4 -

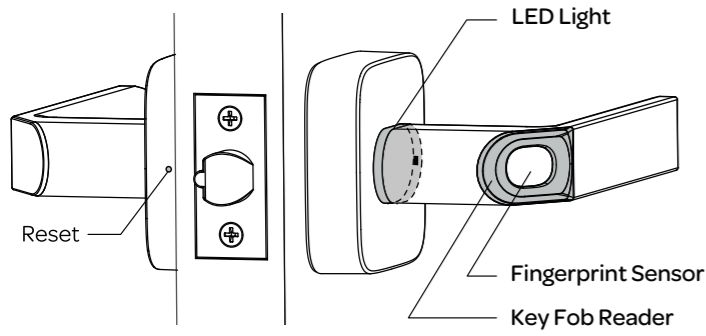
STEP 4



1. Turn Internal Assembly to the horizontal level.
2. Tighten the side screw.
3. Use a tool (e.g. coin) to open battery cap (turn counterclockwise) and insert two AA batteries.



Product Composition



How to Reset

Use a paperclip to pin the Reset hole for 3 seconds. Reset UL1 to Factory Reset Mode. All data will be erased.

After reset UL1, UL1 can be unlocked with any fingerprint or key fob, and UL1 will beep 6 times and LED will stay red as a notice.

LED Light Status

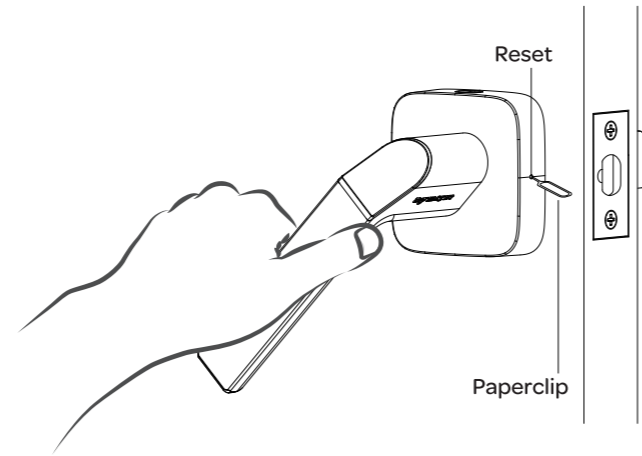
Blue - Standby / Bluetooth Connection

Green - Success

Red - Failure / Low Battery / Factory Reset Mode

-9-

UL1 Calibration



UL1 needs to be calibrated in order to operate properly.

- First, keep pushing down the inside handle of UL1.
- Second, use a paperclip to push the Reset hole around one second until you hear one "beep" from UL1.
- Third, calibration is done.

-10-

App Mode & Standalone Mode

UL1 has two working modes:

• App Mode (Recommended)

UL1 can be operated on U-tec app.

• Standalone Mode

UL1 can be operated without smartphone.

Limited functions (only fingerprint access key fob access)

UL1 has to be reset every time to switch between App Mode and Standalone Mode.

What's the difference between App Mode and Standalone Mode?

• App Mode

Use U-tec App via Bluetooth to control lock (including fingerprint, key fob and smartphone access, user management, log checking, Ekey sharing, lock status setting, etc).

If you have an UltraLoq Bridge, you can control UL1 remotely.

• Standalone Mode

No smartphone is required and lock cannot be controlled by the app.

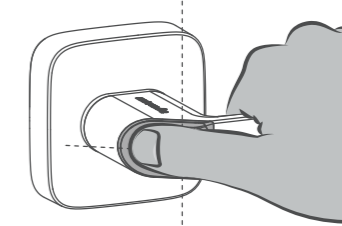
You can register and use fingerprint and key fob to access the lock.

Individual fingerprint or key fob cannot be deleted separately. UL1 has to be reset to clear user data.

-11-

Better Access

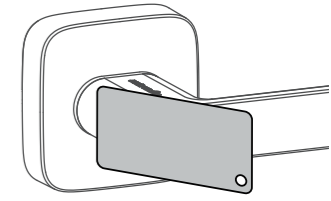
Fingerprint



Fingerprint

1. Make sure your finger is flatly placed at the center of the reader for a better identification.
2. When registering, place your finger at the center with the same gesture.
3. Please note that dry, wet, oily or dirty fingers may affect the fingerprint identification.
4. Avoid the callus, peeling or injured finger to ensure the registration and identification successful.
5. In case of low recognition rate, please register the fingerprint again.

Key Fob



Key Fob

1. When use key fob access, please place the key fob at the center to cover the reader.
2. Approach the sensor with medium speed (instead of sudden motion). If not working, back off a little bit and re-approach.

-12-

App Mode



Scan QR code to download the app



1. Scan above QR code to download the app, or search "U-tec" in App Store (iOS) and Google Play (Android).

2. Open the app, register U-tec account, and log in the account.

3. Make sure UL1 is factory reset mode (refer to Page 2). Turn on Bluetooth on the phone, stay near the lock (within 10 ft / 3 m), and search the lock in the App.

4. Pair the lock in the app and start to use it.

-13-

Standalone Mode

1. Reset UL1 and Register Admin Key

- 1) Pin the Reset button for 3 seconds. LED will blink blue.
- 2) When LED is blinking blue, tap the Black Key Fob (Admin Key) on reader. LED will flash green. Tap Admin Key again.
- 3) Now the Black Key Fob has been registered as the Admin Key.

2. Enter Registration Mode

- 1) Tap the Admin Key. LED will blink blue. UL1 will enter Registration Mode.
- 2) Now you can register new users by fingerprint or key fob.

3. Register a Fingerprint User

- 1) Press the finger on the sensor, LED will flash green 3 times, then lift your finger.
- 2) Once the fingerprint has been registered, you can register another fingerprint or key fob, or exit registration mode.

Register a Key Fob User

- 1) Pick a Blue Key Fob as the User Key.
- 2) Tap it on the reader. LED will flash green. Repeat this process for 2 times
- 3) Once the key fob has been registered, you can register another fingerprint or key fob, or exit registration mode.

4. Exit Registration Mode

When LED is blinking blue, tap the Admin Key or wait 10 seconds to exit the register mode. LED will turn off.

If a failure has occurred (Red LED), any current ongoing process will not be saved. Please start over the process.

-14-

FAQ

1. Installation completed, but there is no power on UL1.

- 1) Check the direction of the batteries. Positive pole should be towards the latch.
- 2) On Internal Assembly, check if the wire is connected to the receiver correctly.

2. Can one UL1 be paired with multiple smartphones?

One UL1 can be paired with infinite number of smartphones, but one UL1 can only be paired with one U-tec account. If a paired UL1 needs to be paired with another U-tec account, this UL1 has to be un-paired from the previous account.

3. What if I lost the paired smartphone?

Go to Store.u-tec.com/account/login to change your U-tec account password.

4. What if I lost the paired key fob?

- 1) If UL1 is in App Mode, find the user in the app and register a new key fob for this user, or delete this key fob.
- 2) If UL1 is in Standalone Mode, please reset UL1 (refer to Page 2). Blue key fob can be registered as Admin Key.

5. How long does the battery last?

UltraLoq UL1 is powered by 4 Alkaline AA batteries for up to 8,000 times access. That is to say battery life is up to 1 year on an average use of 20 times access per day. If the battery is low, UL1 will beep 3 times and LED will blink red and green alternately.

6. How many users can be stored in UL1?

UL1 can store total 100 users. Ekeys are unlimited.

-15-



Warranty Statement

Please check www.u-tec.com for specific warranty details and limitations.

Need Help? Contact Customer Support.

- Visit www.u-tec.com/support
- Email support@u-tec.com

-16-