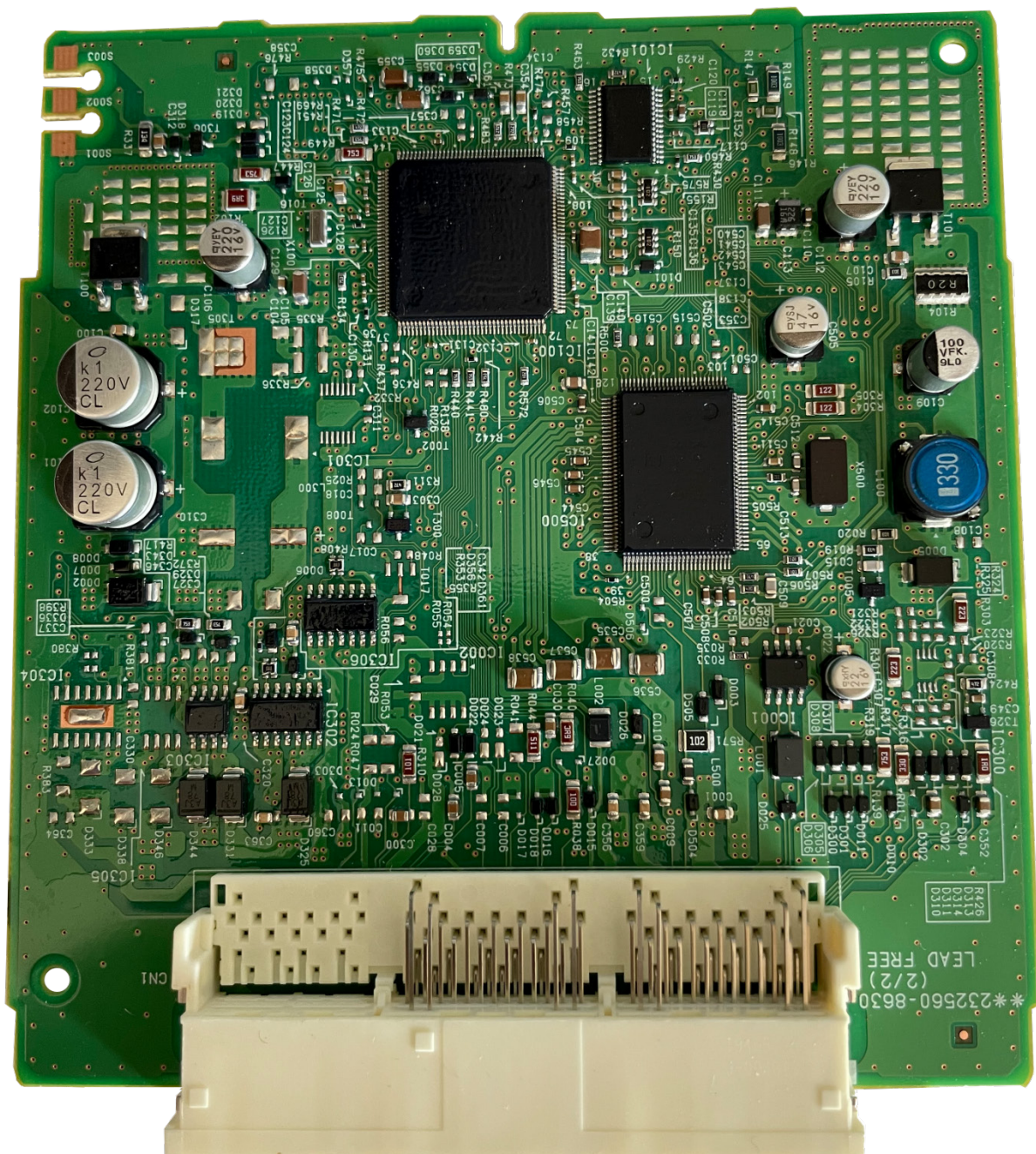


Tango+ Toyota: Smart Systems 2018+

I. Overview

Supported Certification ECU types

In current Tango software version (1.124), 43 individual locked certification ECUs (2017+) are supported. All share common PCB layout, which unlike vehicle model or part number is more reliable method of identifying actual system type.



Requirements

- Tango programmer
- J2534 compliant PassThru OBD Adapter
- SLK-04/04E/07 emulator
- Toyota maker
- SLK-04/07 maker
- Corresponding additional activation for the paid models (CHR, Prius, subscription, etc...)

SLK Emulators

| Page1 | Logic | Orig. Chip | Emulator | Color Code |
|-------|---------|------------|----------|------------|
| A9 | DST AES | RF430 | SLK-04 | White |
| AA | DST AES | RF430 | SLK-07 | Gold |



II. Procedure

How To make a Smart Key

Briefly explained the goal of this software is to create a "dummy key" and get permission by the vehicle to register new Smart Keys in All Keys Lost situation.

The learning procedure consists of the two steps:

- Make the dummy key (emulator)
- Register new SmartKey(s)

Operating Procedure

1. Connect the Pass Thru adapter to the vehicle's Certification ECU and to a PC
2. Connect Tango to the PC
3. Run the Tango+ Toyota.exe (double click on the icon, or start from Tango main software)
4. Click the **Connect to Car** button
5. Press Read Data from Car
6. Select Key position (KEY No: KEY1/KEY2/etc..)
7. Place the SLK-0x Emulator in Tango coil (make sure it has a battery)
8. Press Write Emulator

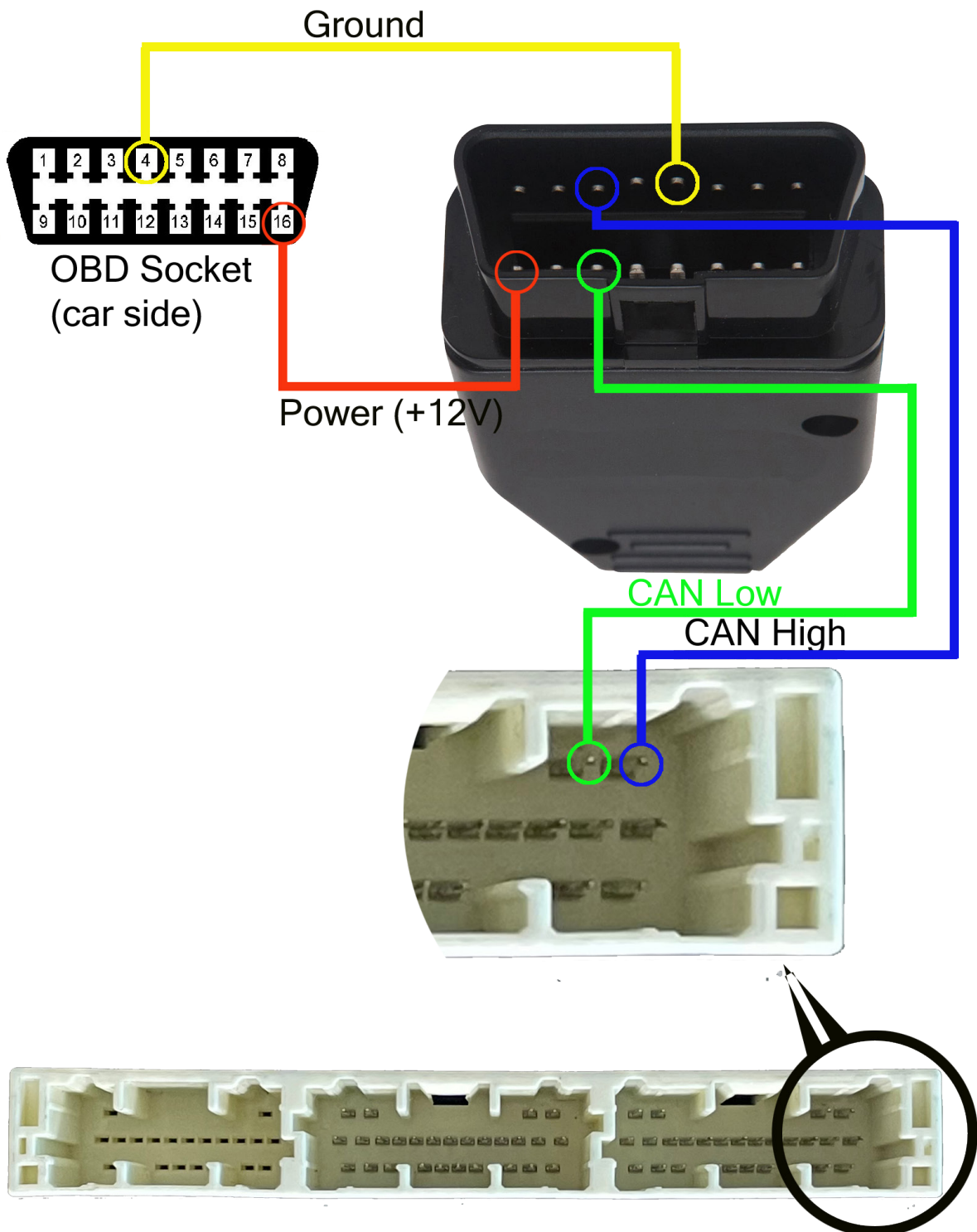
9. Once emulator is written it can be used to authorize the standard diagnostic procedure for Key addition Tango+ Toyota-> Connect to Vehicle->Learn Key.

Connection diagrams

Although the procedure uses PassThru adapter and OBD protocols, for Toyota vehicles 2017+ it is required to connect directly to the Certification ECU (Smart Box) of the vehicle in order to obtain the keys data.

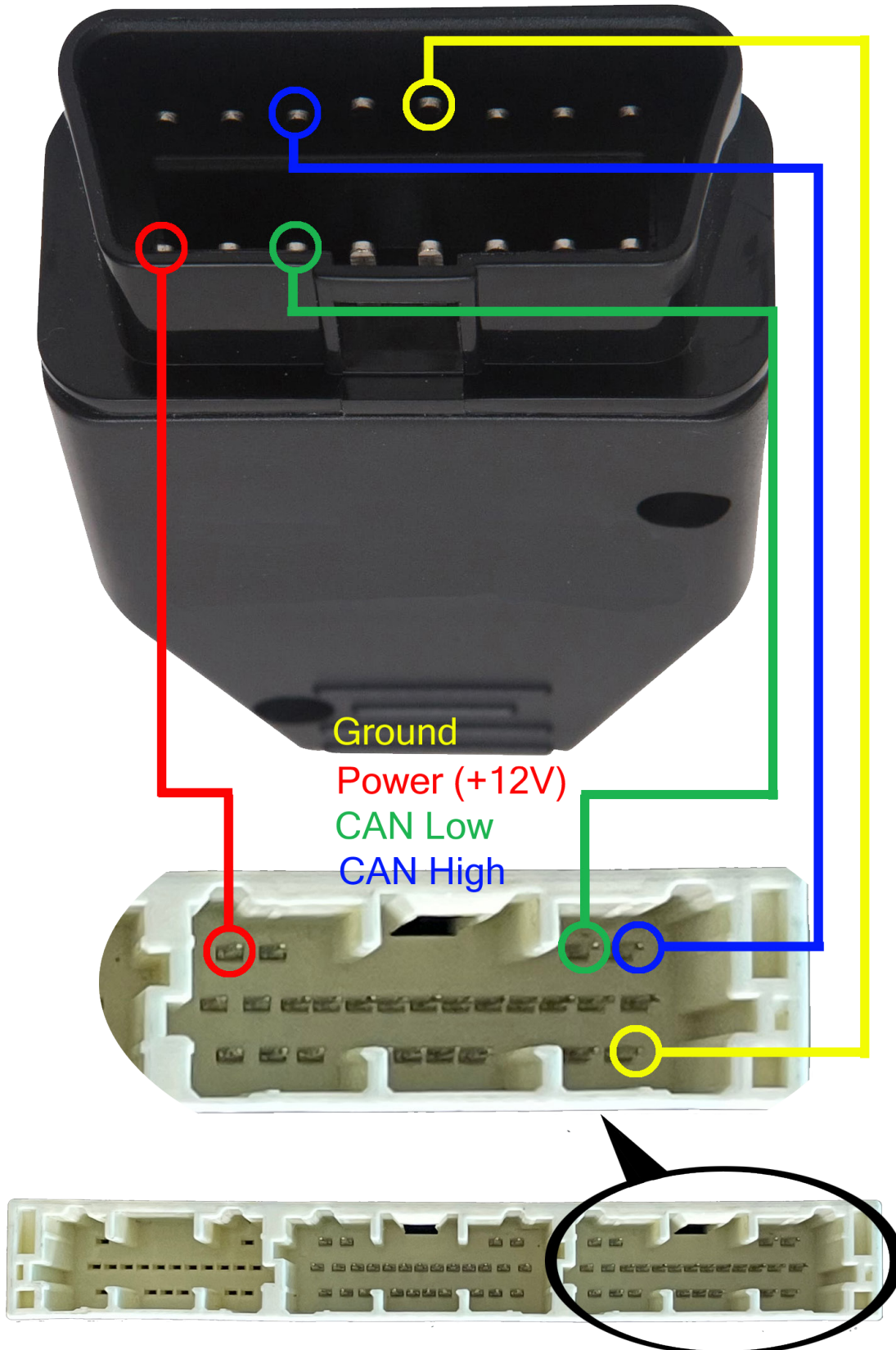
1. Connection in vehicle variant 1

NOTE: Don't remove the Smart Plug, connect to its CAN line!

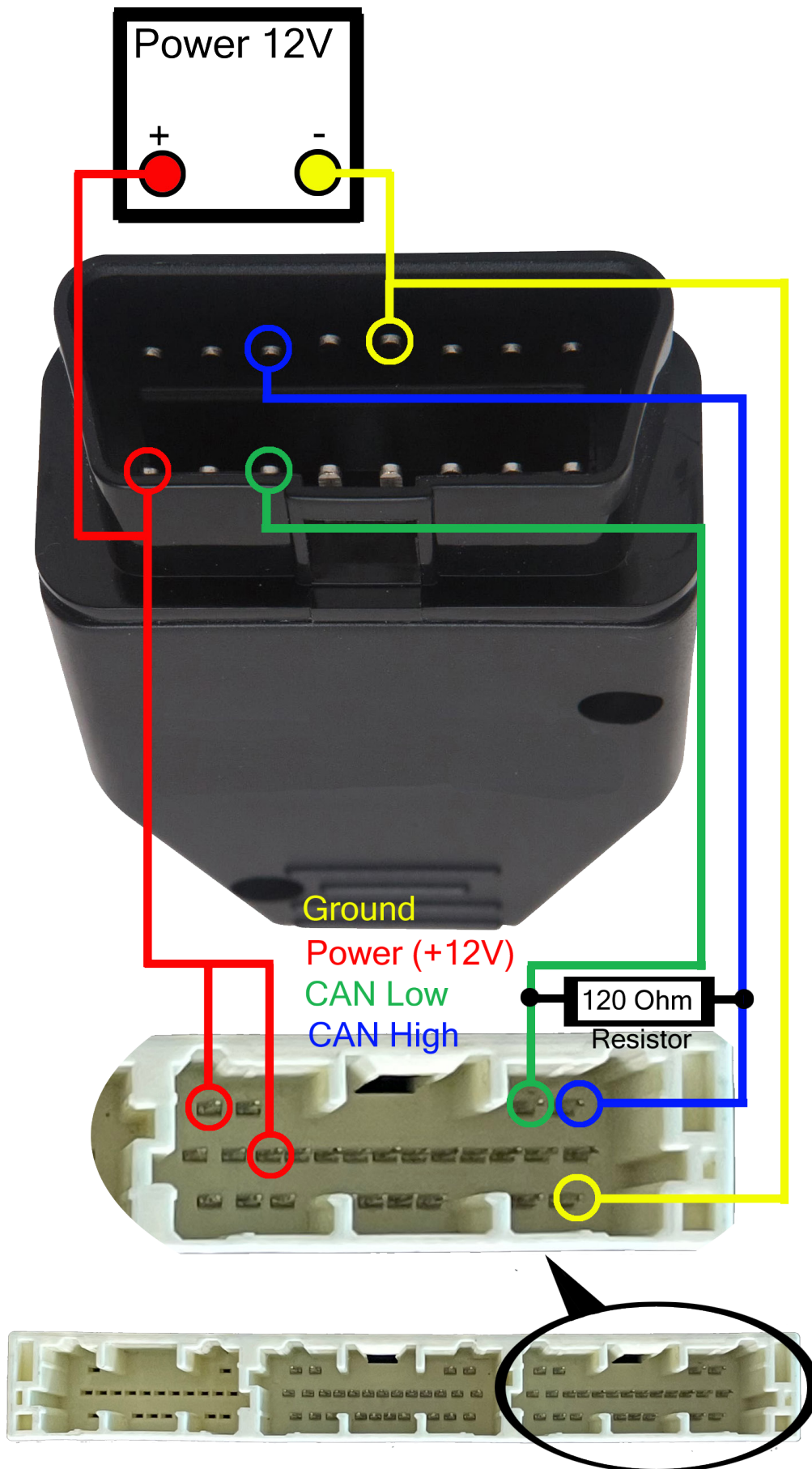


2. Connection in vehicle variant 2

NOTE: Don't remove the Smart Plug, connect to its CAN line/GND/BAT!



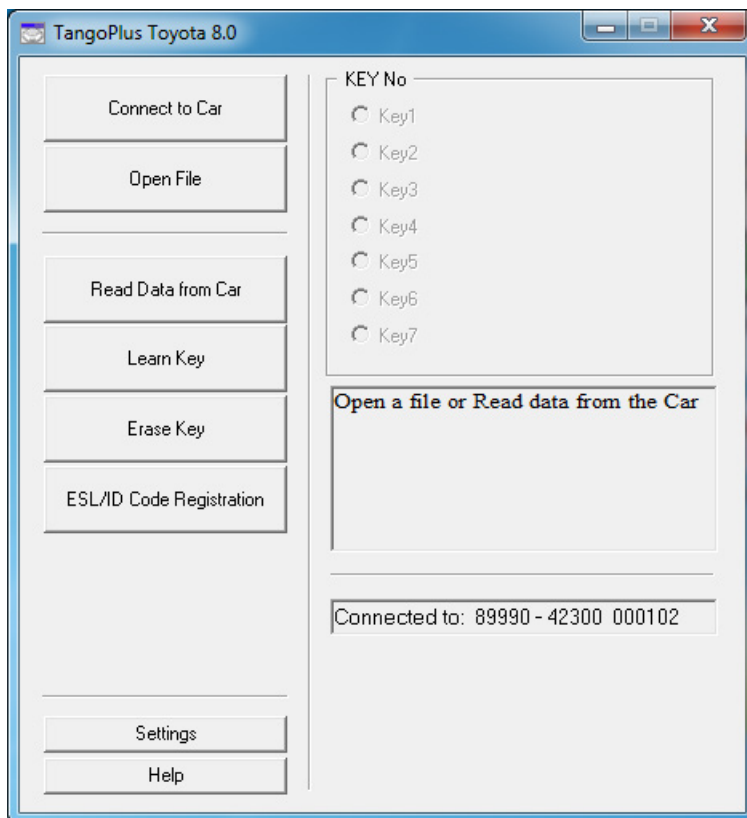
3. Connection on bench



III. Additional functions

After connection to vehicle with Tango+ Toyota through the OBD plug, the following additional functions are available:

- Key Learn (including online types)*
- Erase Keys(including online types)*
- Register ID code & ESL



** For online models read data from a Smart Box using TangoPlus is required.*