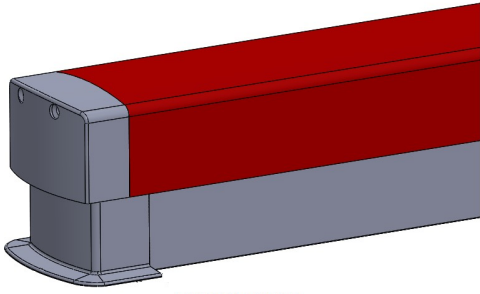


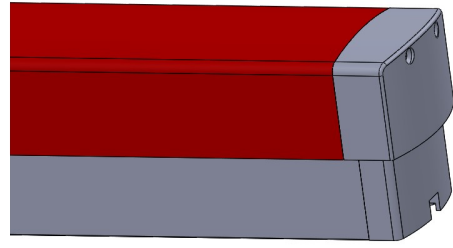
T352: Concealed vertical rod exit device

- . Concealed vertical rod exit device for use in low, medium and high traffic, with 2 vertical closing points. Quick exit device, meets hurricane requirements.
- . Active push bar and back bar made of extruded aluminum. End back bar and caps made of injection aluminum. High performance epoxy paint finish with high strength and durability, also anodized in different options.
- . Top and bottom strikes made of deep drawn sheet steel. Metal Bolts of 9/16" diameter and 5/8" max projection easily adjustable.
- . Three options length device for 36"; 42" and 48" all with the possibility of cutting 6".
- . Suitable for doors heights up to 96" with device mounted at 40" centerline above finished floor. For higher doors require extension of threaded rod for up to 120". Available separately.
- . Suitable for 1 3/4" and 2" thickness doors. Suitable for doors with up to 3/16" stile wall thickness and minimum 2 1/2" of stile width is required. Recommended backset installation 1 1/2".
- . Device is non-handed. The protection bar is 3" when fully projected and 2" when dogged. Standard dogging with 3/16" hex key (not included).
- . Suitable for use with any standard 1" to 1-1/4" length, 1-5/32" diameter mortise or thumb turn cylinder with MS® cam in conjunction with own escutcheon(included).





FRAME SIDE



HINGES SIDE

