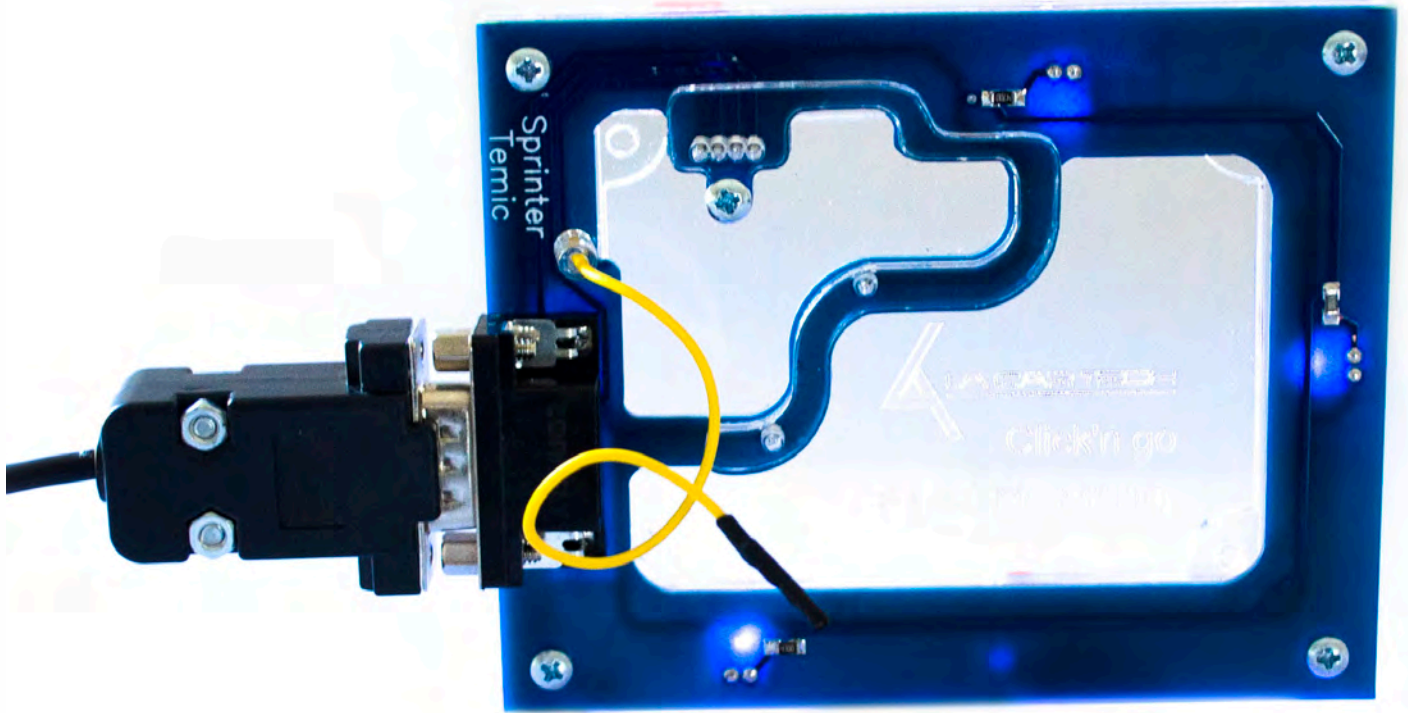


Click'n Go

Sprinter Temic I gen Click'n Go Adapter

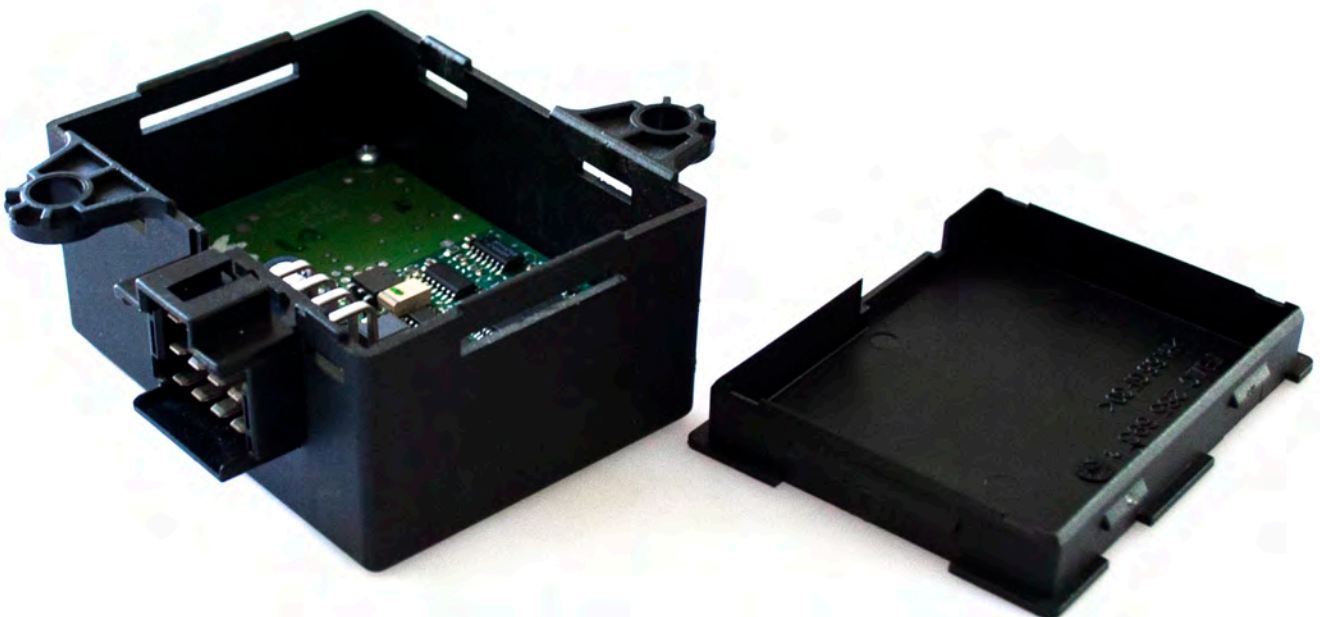
Works with MBProg Programmer. No soldering required.
Sprinter Temic I gen immobiliser with 908 Motorola processor
(Mask 1J35D OR 4J74Y).



Sprinter Temic I gen

How to connect

Carefully open by pushing in the immo back body tabs.
Recommended to use two or more tools to hold the body open.

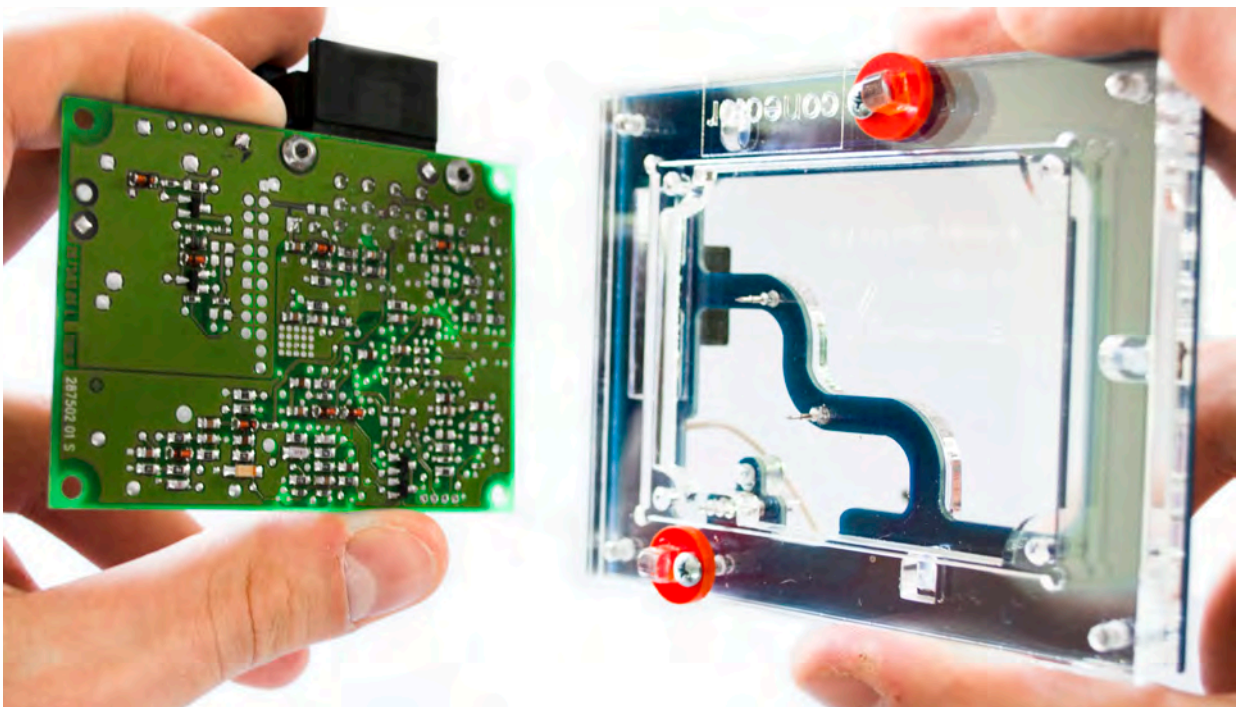


Sprinter Temic I gen

Remove four screws in the immo board corners.

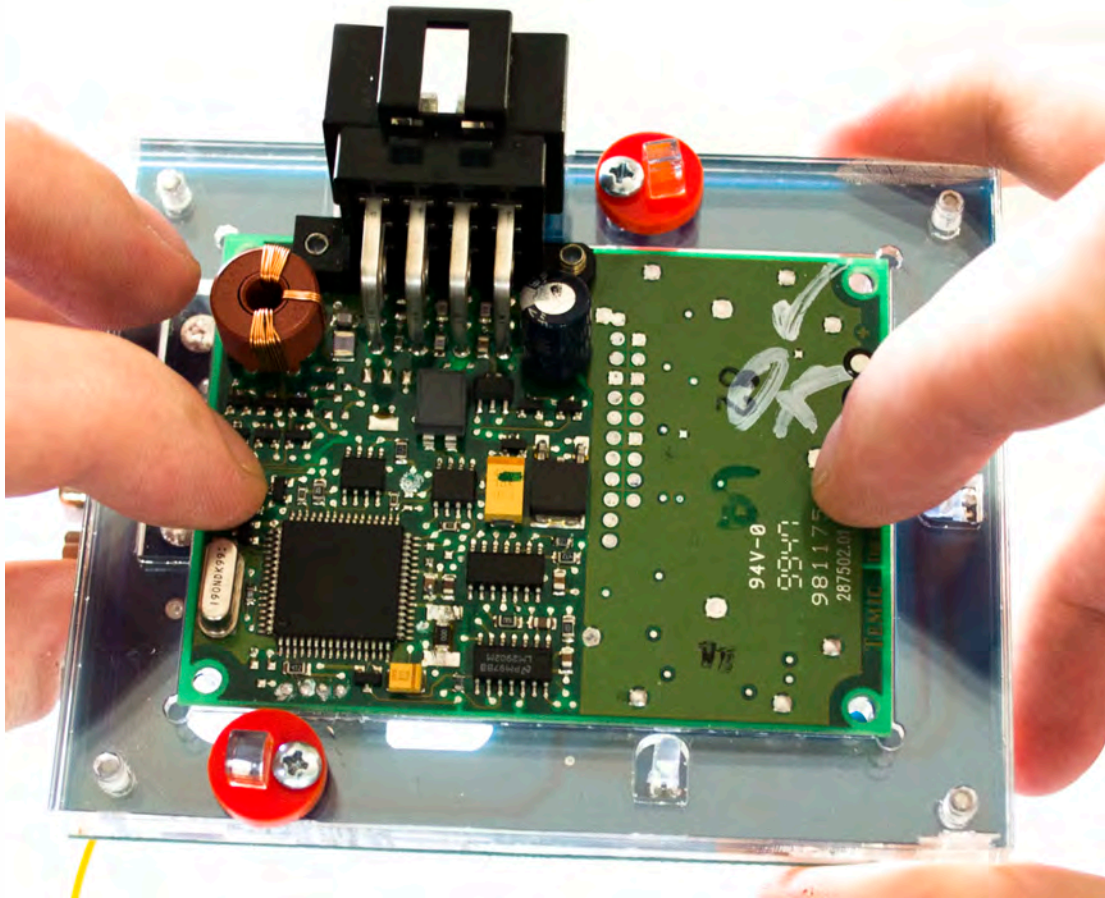


Match the immo board with Click'n Go adapter.
Immo connector should go over the "Connector" on the Click'n Go adapter.

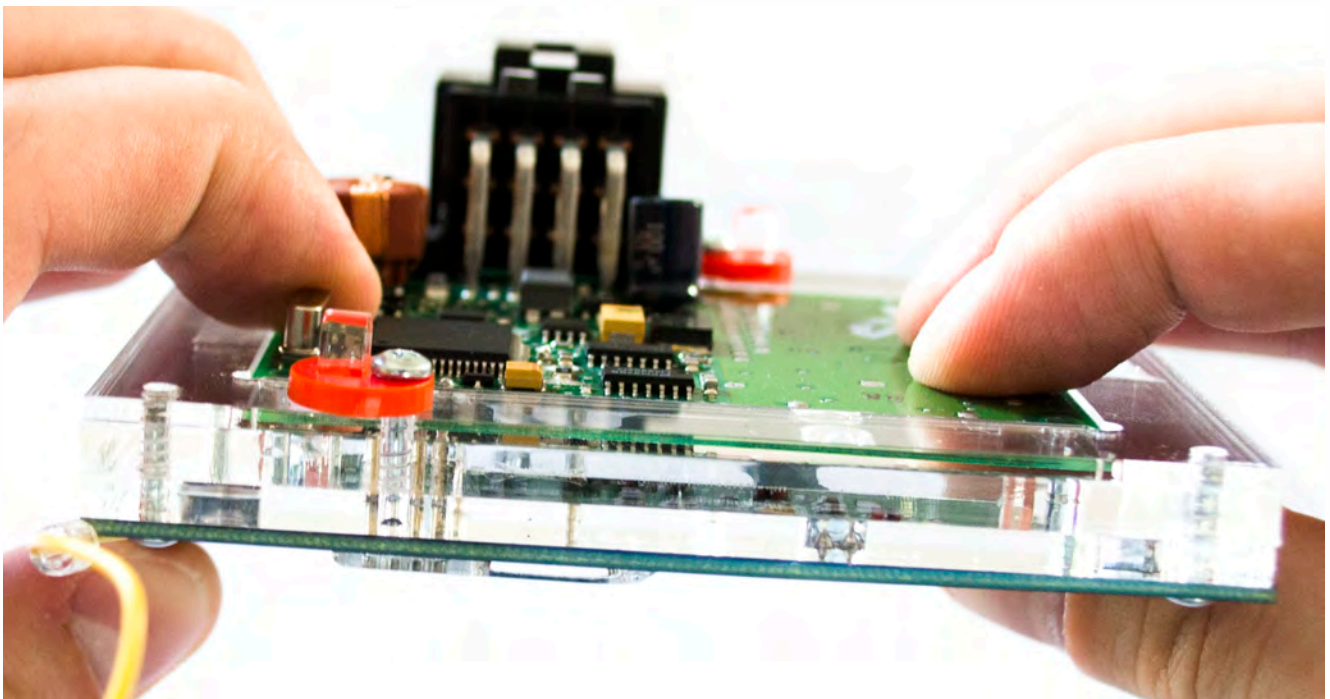


Sprinter Temic I gen

Mount immo board on the Click'n Go adapter.

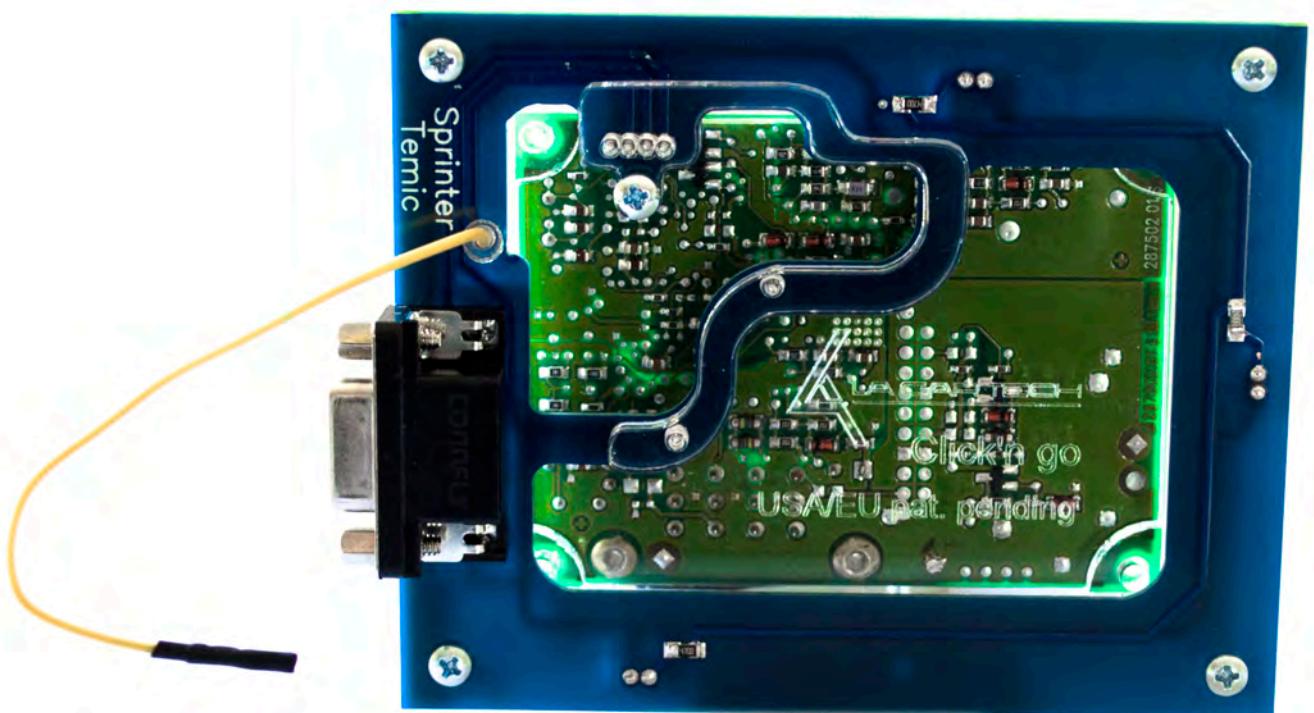
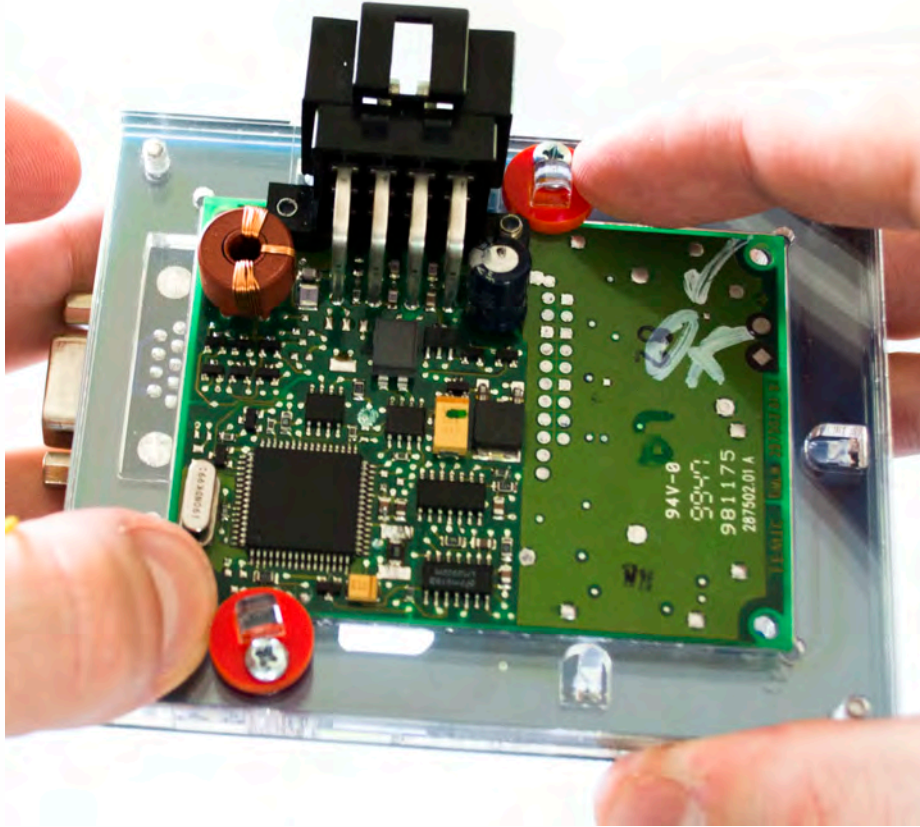


Push down the immo board on to the Click'n Go adapter.
Make sure it's mounted correctly.



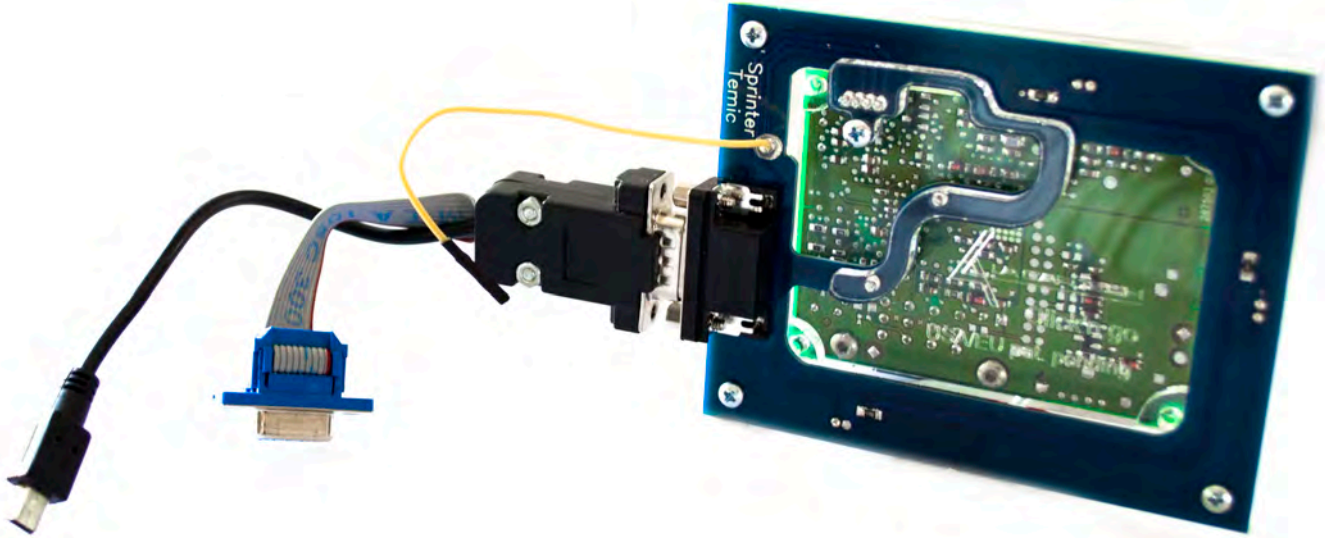
Sprinter Temic I gen

Secure immo by turning the Click'n Go safety locks over the immo board



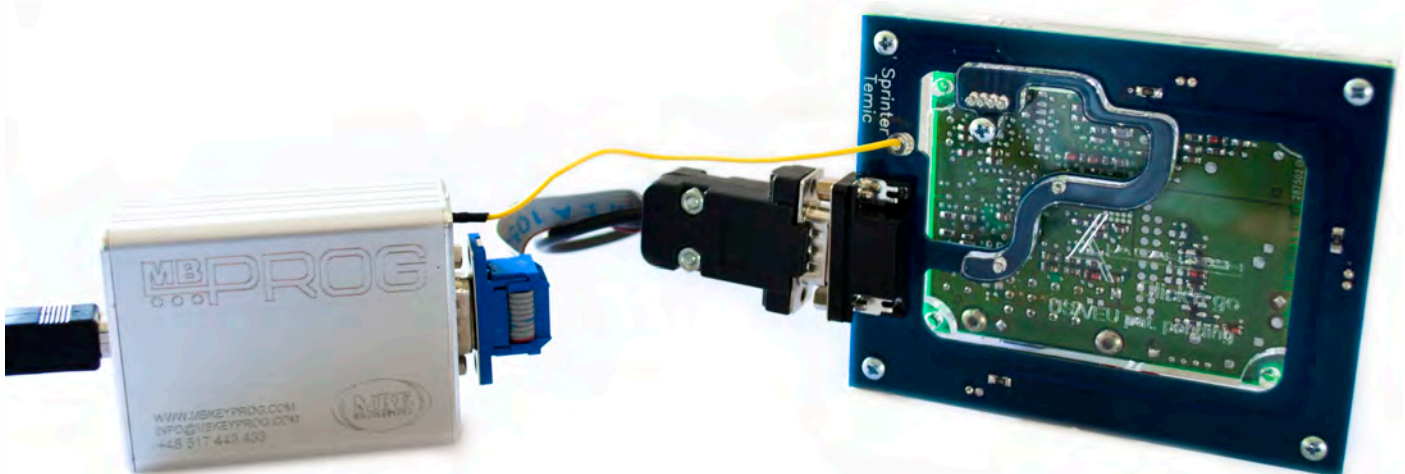
Sprinter Temic I gen

Connect MBProg 2 Click'n Go cable to Click'n Go adapter



Connect yellow Click'n Go cable to MBProg

Connect MBProg 2 Click'n Go cable to MBProg
Connect MBProg USB cable to PC and MBProg



Sprinter Temic I gen



How to read

Open MBProg software.

Check bottom right corner if your device is correctly connected.

Now click Chip button.

Selected Device: None

	00	01	02	03	04	05	06	07	08	09	0A	0B	0C	0D	0E	0F	01	2	3	4	5	6	7	8	9	A	B	C	D	E	F
0x00	FF	FF	FF	FF	FF	FF	FF	FF	FF	FF	FF	FF	FF	FF	FF	FF
0x10	FF	FF	FF	FF	FF	FF	FF	FF	FF	FF	FF	FF	FF	FF	FF	FF
0x20	FF	FF	FF	FF	FF	FF	FF	FF	FF	FF	FF	FF	FF	FF	FF	FF
0x30	FF	FF	FF	FF	FF	FF	FF	FF	FF	FF	FF	FF	FF	FF	FF	FF
0x40	FF	FF	FF	FF	FF	FF	FF	FF	FF	FF	FF	FF	FF	FF	FF	FF
0x50	FF	FF	FF	FF	FF	FF	FF	FF	FF	FF	FF	FF	FF	FF	FF	FF
0x60	FF	FF	FF	FF	FF	FF	FF	FF	FF	FF	FF	FF	FF	FF	FF	FF
0x70	FF	FF	FF	FF	FF	FF	FF	FF	FF	FF	FF	FF	FF	FF	FF	FF
0x80	FF	FF	FF	FF	FF	FF	FF	FF	FF	FF	FF	FF	FF	FF	FF	FF
0x90	FF	FF	FF	FF	FF	FF	FF	FF	FF	FF	FF	FF	FF	FF	FF	FF
0xA0	FF	FF	FF	FF	FF	FF	FF	FF	FF	FF	FF	FF	FF	FF	FF	FF
0xB0	FF	FF	FF	FF	FF	FF	FF	FF	FF	FF	FF	FF	FF	FF	FF	FF
0xC0	FF	FF	FF	FF	FF	FF	FF	FF	FF	FF	FF	FF	FF	FF	FF	FF
0xD0	FF	FF	FF	FF	FF	FF	FF	FF	FF	FF	FF	FF	FF	FF	FF	FF
0xE0	FF	FF	FF	FF	FF	FF	FF	FF	FF	FF	FF	FF	FF	FF	FF	FF
0xF0	FF	FF	FF	FF	FF	FF	FF	FF	FF	FF	FF	FF	FF	FF	FF	FF

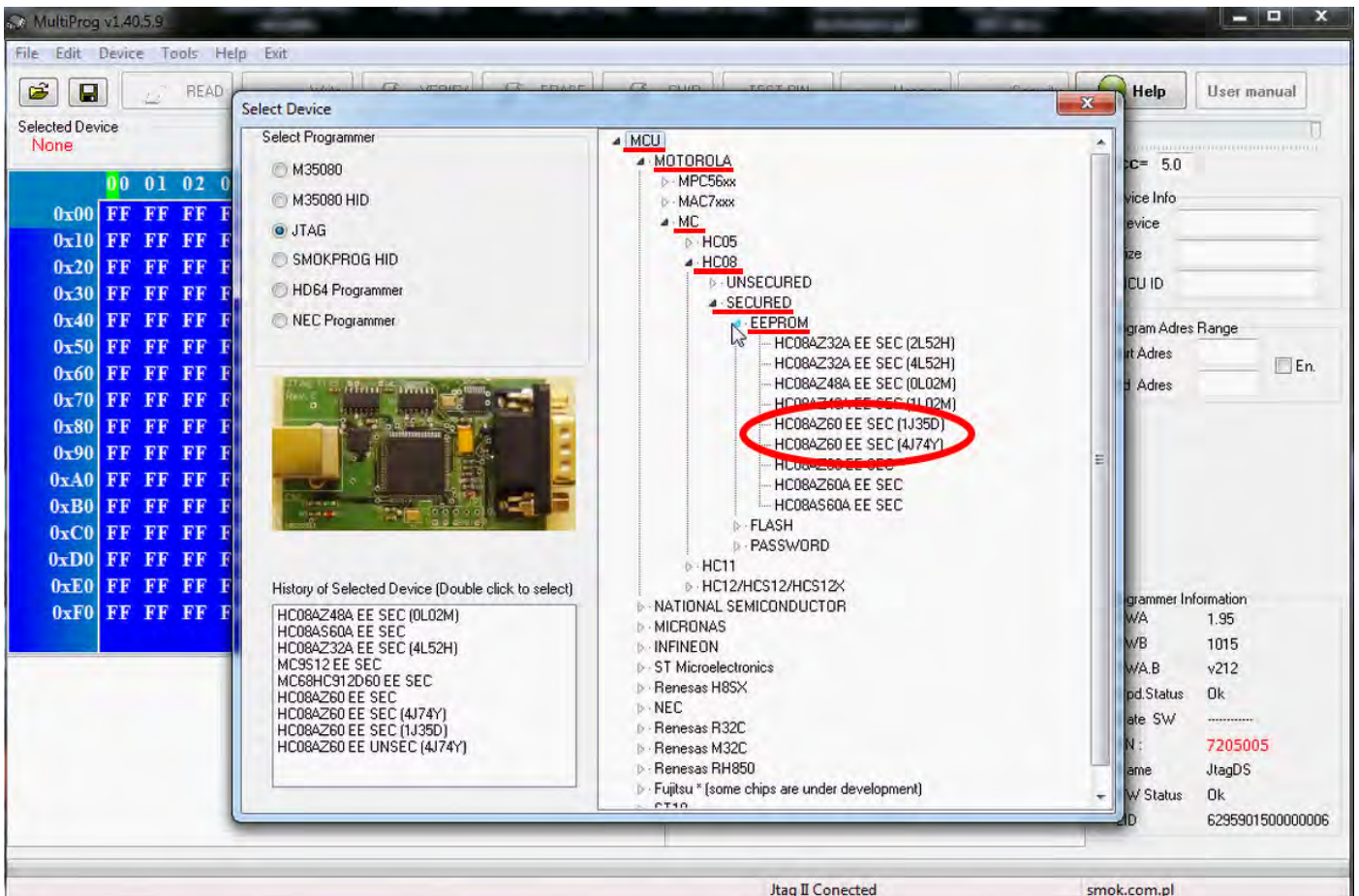
Programmer Information

SWA	1.94
SWB	1015
SWA.B	v212
Upd Status	Ok
Date SW
SN	5904855
Name	JtagDS
HW Status	Ok
LID	62D98E3300000A9

Jtag II Connected smok.com.pl

Sprinter Temic I gen

Make sure that JTAG is selected in programmer software.
Select MOTOROLA > MC > HC08 > SECURED > EEPROM
Double click on HC08AZ60 EE SEC option as seen in the red circle.
Choose the proper mask set for your EIS (1J35D) OR (4J74Y).



Sprinter Temic I gen

Immo reading process is done.

MultiProg v1.40.5.7

File Edit Device Tools Help Exit

READ Write VERIFY ERASE CHIP TEST PIN Usecure Security Help User manual

Selected Device
HC08AZ60 EE SEC (4J74Y)

	00	01	02	03	04	05	06	07	08	09	0A	0B	0C	0D	0E	0F	01	2	3	4	5	6	7	8	9	A	B	C	D	E	F
0x000	5A	00	DE	9D	6F	33	06	7E	80	22	DF	CA	8F	9B	F0	94	Z
0x010	7D	B5	5C	FC	84	3B	67	A3	2A	95	41	D7	7F	14	59	3A		
0x020	B0	92	E4	B0	19	02	D1	3F	74	98	4B	D2	68	BC	AC	09		
0x030	98	AD	4D	08	1D	10	B4	E3	9E	FD	A0	A7	F3	06	E3	FB		
0x040	43	16	BC	B0	E2	87	7E	3B	69	4D	02	27	41	02	B0	6F	C	
0x050	E5	9C	01	F8	29	31	97	BD	29	4E	63	45	B1	CC	92	46		
0x060	7F	52	62	54	C6	EE	77	43	B7	F3	21	1F	B2	1D	0C	F7		
0x070	93	87	8E	3A	56	30	A6	13	50	E8	CD	9D	4B	B0	C8	34		
0x080	9F	E5	B9	FD	52	91	08	FB	F7	0E	66	30	33	22	23	78		
0x090	5A	0E	25	CF	1B	D5	10	7C	DC	BF	1C	CE	2E	7C	C7	41	Z	
0x0A0	70	C5	B6	72	CC	98	B1	AA	C1	75	30	AC	7C	4E	AF	A7		
0x0B0	32	CE	AD	68	EC	59	5F	FA	6C	F9	2D	8D	48	2B	B3	3F		
0x0C0	5A	FF	46	47	1E	1F	7C	7D	7E	7F	FF	FF	FF	FF	FF	FF	Z	
0x0D0	FF	FF	FF	FF	FF	FF	FF	FF	FF	FF	FF	FF	FF	FF	FF	FF		
0x0E0	FF	FF	FF	FF	FF	FF	FF	FF	FF	FF	FF	FF	FF	FF	FF	FF		
0x0F0	FF	FF	FF	FF	FF	FF	FF	FF	FF	FF	FF	FF	FF	FF	FF	FF		
0x100	FF	FF	FF	FF	FF	FF	FF	FF	FF	FF	FF	FF	FF	FF	FF	FF		

Read EE HC08AZ60 EE SEC (4J74Y)
Unsecuring Please Wait...
F: 48
Unsecure Ok
Connected
Baud: 14400
Read Ok
Saved backup File : C:\Users\Asus\Documents\Temp\Temp0.bin

Read Ok

Jtag II Connected

smok.com.pl

Vcc= 5.0

Device Info
Device MC68HC08AZ60
Size 1024
MCU ID

Program Adres Range
Start Adres 000000
End Adres 0001FF

Programmer Information
SWA 1.95
SWB 1015
SWA,B v212
Upd.Status Ok
Date SW
SN : 5904855
Name JtagDS
HW Status Ok
LID 62D98E33000000A9