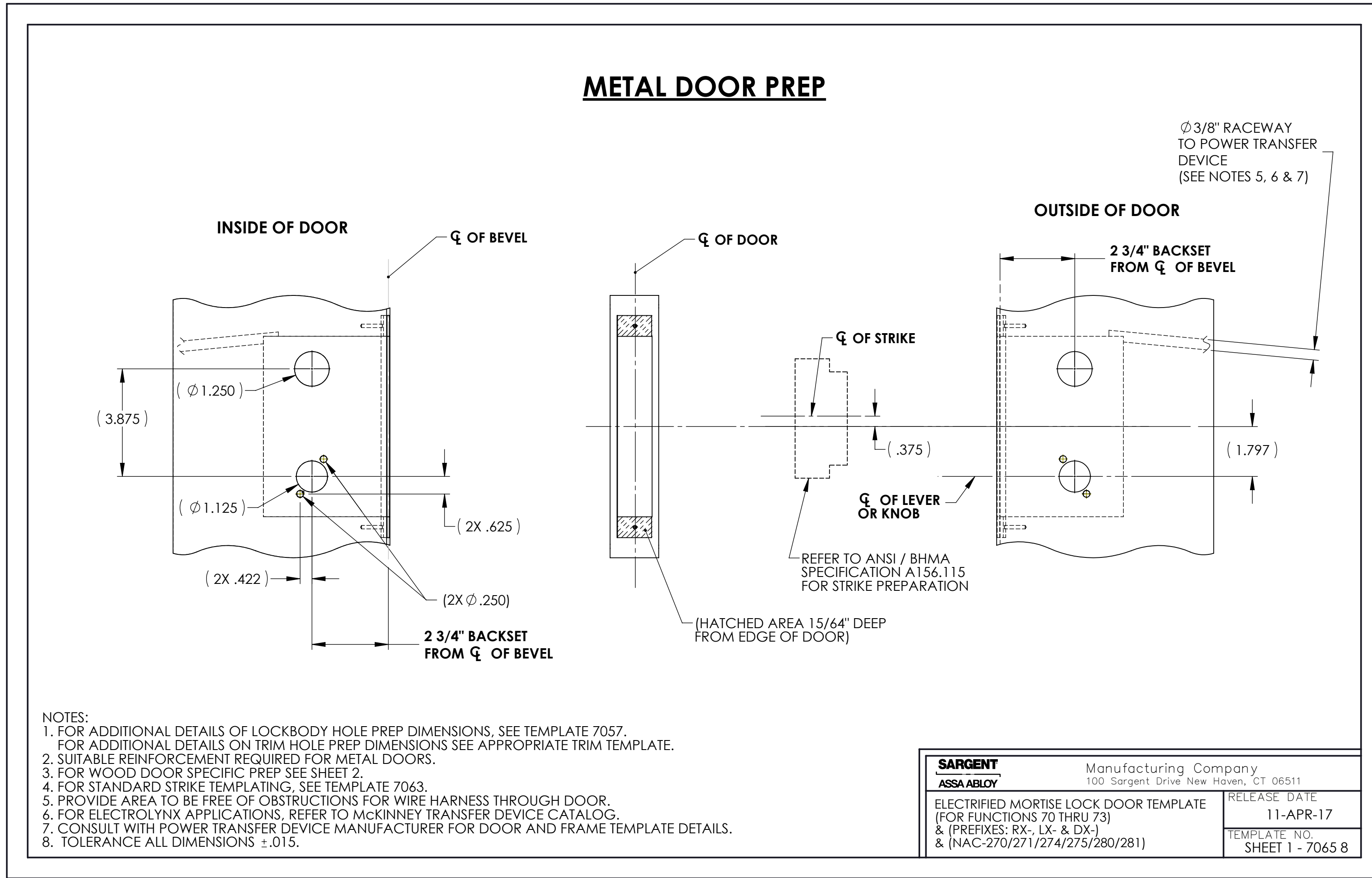


ZONE	REV	DESCRIPTION	DATE	ENGINEER
B3 SHT 2 B2 SHT 2	8	REVISED PER EN721403 1. POCKET DEPTH NOTE REMOVED FROM MIDDLE VIEW. 2. POCKET DEPTH 4-9/16" ADDED AS A DIMENSION.	1/15/2019	TWF

## METAL DOOR PREP



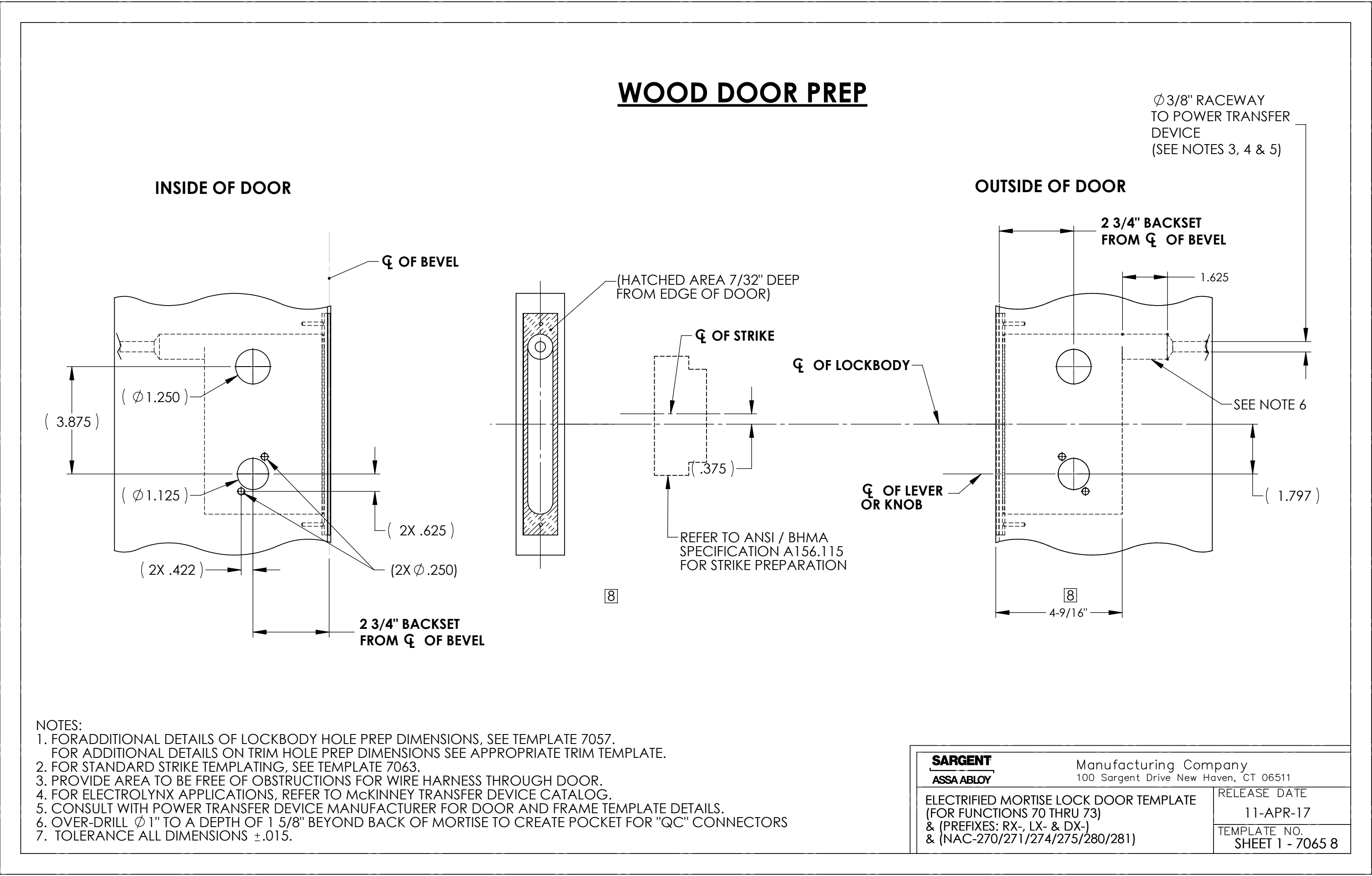
- NOTES:
- FOR ADDITIONAL DETAILS OF LOCKBODY HOLE PREP DIMENSIONS, SEE TEMPLATE 7057.
  - FOR ADDITIONAL DETAILS ON TRIM HOLE PREP DIMENSIONS SEE APPROPRIATE TRIM TEMPLATE.
  - SUITABLE REINFORCEMENT REQUIRED FOR METAL DOORS.
  - FOR WOOD DOOR SPECIFIC PREP SEE SHEET 2.
  - FOR STANDARD STRIKE TEMPLATING, SEE TEMPLATE 7063.
  - PROVIDE AREA TO BE FREE OF OBSTRUCTIONS FOR WIRE HARNESS THROUGH DOOR.
  - FOR ELECTROLYNX APPLICATIONS, REFER TO MCKINNEY TRANSFER DEVICE CATALOG.
  - CONSULT WITH POWER TRANSFER DEVICE MANUFACTURER FOR DOOR AND FRAME TEMPLATE DETAILS.
  - TOLERANCE ALL DIMENSIONS  $\pm .015$ .

<b>SARGENT</b> ASSA ABLOY	Manufacturing Company 100 Sargent Drive New Haven, CT 06511
ELECTRIFIED MORTISE LOCK DOOR TEMPLATE (FOR FUNCTIONS 70 THRU 73) & (PREFIXES: RX-, LX- & DX-) & (NAC-270/271/274/275/280/281)	RELEASE DATE 11-APR-17
	TEMPLATE NO. SHEET 1 - 7065 8

<p><b>NOTICE TO PERSONS RECEIVING THIS DRAWING AND/OR TECHNICAL INFORMATION</b> Sargent Manufacturing Company claims proprietary rights to the material disclosed hereon. This drawing and/or technical information is issued in confidence for engineering information only and may not be reproduced or used to manufacture anything shown or referred to hereon without direct written permission from Sargent Manufacturing Company to the user. This drawing and/or technical information is the property of Sargent Manufacturing Company and is loaned for mutual assistance to be returned when its purpose has been served.</p>	<p><b>UNLESS OTHERWISE SPECIFIED TOLERANCES</b> X.X ± .03 X.XX ± .01 X.XXX ± .005 ANGLES ± 0°30' FRACTIONS ± 1/64 SURFACE FINISH <math>\sqrt{\text{R}}</math></p>	<p>DRAWING COMPLIES WITH ASME Y14.5M - 1994</p> <p>INCH MM</p> <p>THIRD ANGLE PROJECTION</p>	<p>MATERIAL Oak</p> <p>HEAT TREATMENT</p>	<b>DOOR MANUFACTURERS TEMPLATE ELECTRIFIED MORTISE LOCK</b>					
				Sargent Manufacturing Company New Haven, Ct		DATE CREATED 04/26/2018	DRAWN BY FRM	DESIGNED BY TWF	
				SURFACE/FINISH		DOCUMENT ID D000922352-000	SCALE 1:3	SIZE C	
				MASS 1.671 lb	VOLUME 82.591 in <sup>3</sup>	SURFACE AREA 262.777 in <sup>2</sup>	DRAWING NUMBER (ALT ID) <b>7065</b>	PART NUMBER	REV <b>8</b>

REVISIONS				
ZONE	REV.	DESCRIPTION	NAMEDATE	APP/DATE
-	-	See Sheet 1	-	-

## WOOD DOOR PREP



- NOTES:**
- FOR ADDITIONAL DETAILS OF LOCKBODY HOLE PREP DIMENSIONS, SEE TEMPLATE 7057. FOR ADDITIONAL DETAILS ON TRIM HOLE PREP DIMENSIONS SEE APPROPRIATE TRIM TEMPLATE.
  - FOR STANDARD STRIKE TEMPLATING, SEE TEMPLATE 7063.
  - PROVIDE AREA TO BE FREE OF OBSTRUCTIONS FOR WIRE HARNESS THROUGH DOOR.
  - FOR ELECTROLYNX APPLICATIONS, REFER TO MCKINNEY TRANSFER DEVICE CATALOG.
  - CONSULT WITH POWER TRANSFER DEVICE MANUFACTURER FOR DOOR AND FRAME TEMPLATE DETAILS.
  - OVER-DRILL  $\phi 1"$  TO A DEPTH OF 1 5/8" BEYOND BACK OF MORTISE TO CREATE POCKET FOR "QC" CONNECTORS
  - TOLERANCE ALL DIMENSIONS  $\pm .015$ .

<b>SARGENT</b> Manufacturing Company	
ASSA ABLOY 100 Sargent Drive New Haven, CT 06511	
ELECTRIFIED MORTISE LOCK DOOR TEMPLATE (FOR FUNCTIONS 70 THRU 73) & (PREFIXES: RX-, LX- & DX-) & (NAC-270/271/274/275/280/281)	RELEASE DATE 11-APR-17
TEMPLATE NO. SHEET 1 - 7065 8	

<p><b>NOTICE TO PERSONS RECEIVING THIS DRAWING AND/OR TECHNICAL INFORMATION</b> Sargent Manufacturing Company claims proprietary rights to the material disclosed hereon. This drawing and/or technical information is issued in confidence for engineering information only and may not be reproduced or used to manufacture anything shown or referred to hereon without direct written permission from Sargent Manufacturing Company to the user. This drawing and/or technical information is the property of Sargent Manufacturing Company and is loaned for mutual assistance to be returned when its purpose has been served.</p>	<p><b>UNLESS OTHERWISE SPECIFIED TOLERANCES</b></p> <table> <tr><td>XX</td><td><math>\pm .03</math></td></tr> <tr><td>XXX</td><td><math>\pm .01</math></td></tr> <tr><td>X.XXX</td><td><math>\pm .005</math></td></tr> <tr><td>ANGLES</td><td><math>\pm 0^{\circ}30'</math></td></tr> <tr><td>FRACTIONS</td><td><math>\pm 1/64</math></td></tr> <tr><td>SURFACE FINISH</td><td><math>\sqrt{\text{A}}</math></td></tr> </table>	XX	$\pm .03$	XXX	$\pm .01$	X.XXX	$\pm .005$	ANGLES	$\pm 0^{\circ}30'$	FRACTIONS	$\pm 1/64$	SURFACE FINISH	$\sqrt{\text{A}}$	<p>DRAWING COMPLIES WITH ASME Y14.5M - 1994</p> <p>INCH</p> <p>MM</p> <p>THIRD ANGLE PROJECTION</p>	<p>MATERIAL Oak</p> <p>HEAT TREATMENT</p>	<p><b>DOOR MANUFACTURERS TEMPLATE ELECTRIFIED MORTISE LOCK</b></p>			
	XX	$\pm .03$																	
	XXX	$\pm .01$																	
	X.XXX	$\pm .005$																	
ANGLES	$\pm 0^{\circ}30'$																		
FRACTIONS	$\pm 1/64$																		
SURFACE FINISH	$\sqrt{\text{A}}$																		
<p>Sargent Manufacturing Company New Haven, Ct</p>	<p>MASS 1.837 lb</p>	<p>VOLUME 90.807 in<sup>3</sup></p>	<p>SURFACE AREA 265.891 in<sup>2</sup></p>	<p>DATE CREATED 04/26/2018</p>	<p>DRAWN BY FRM</p>	<p>DESIGNED BY TWF</p>	<p>DOCUMENT ID D000922352-000</p>	<p>SCALE 1:3</p>	<p>SIZE C</p>										
				<p>DRAWING NUMBER (ALT ID) <b>7065</b></p>	<p>PART NUMBER</p>	<p>REV <b>8</b></p>													