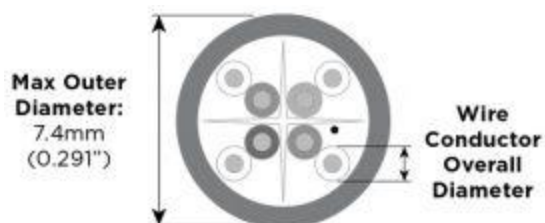
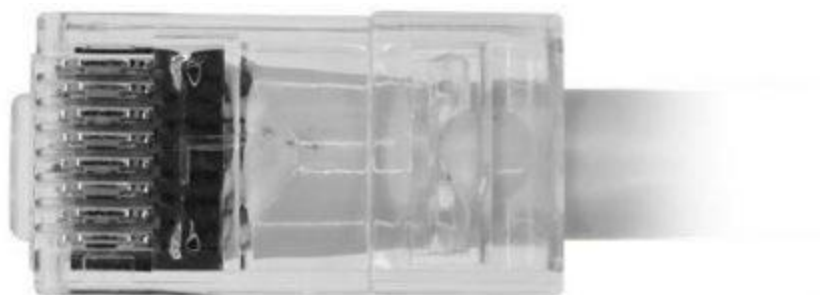


Best Practice Termination Instructions

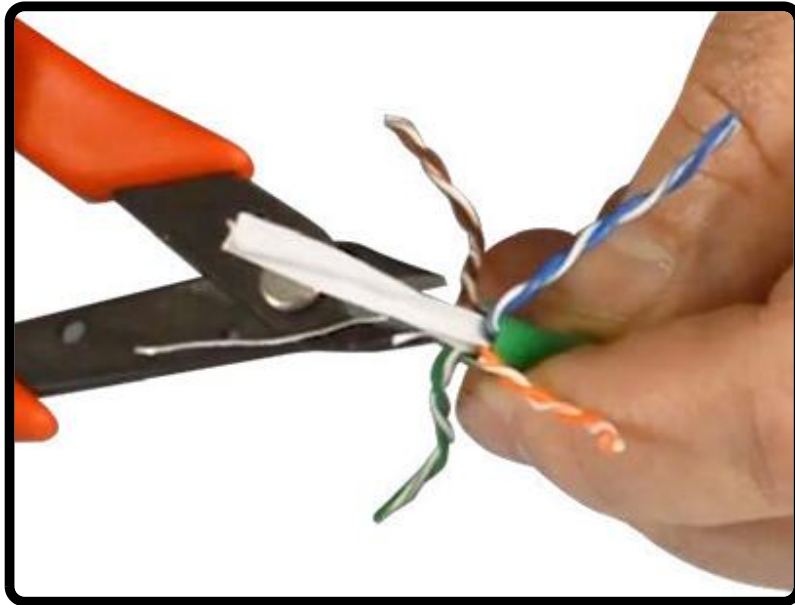
1. **Bar45®** uses a Hi/Lo stagger design and is made of a material that provides better signal isolation improving NEXT performance;

2. On **S45-1100**, the **Bar45®** is located over the RJ45 pins. This allows the LAN cable to be inserted deeper into the Plug. This reduces the length of untwisted wires improving signal integrity and negating crosstalk interference.

For improved termination performance, please follow the step-by-step instructions for terminating the **S45-1100** RJ45 modular plugs.



Wire Conductor Diameter Size Range:
23 AWG: 1.05mm - 1.17mm (0.041" - 0.046")



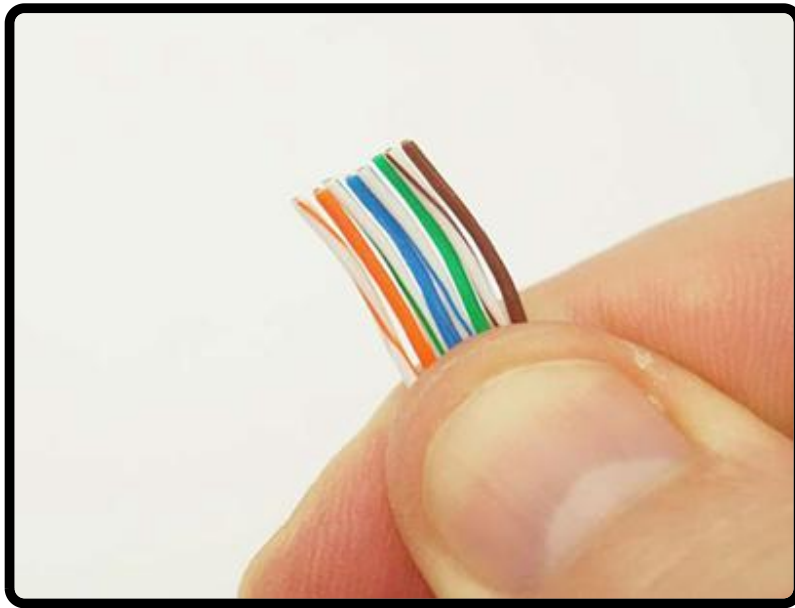
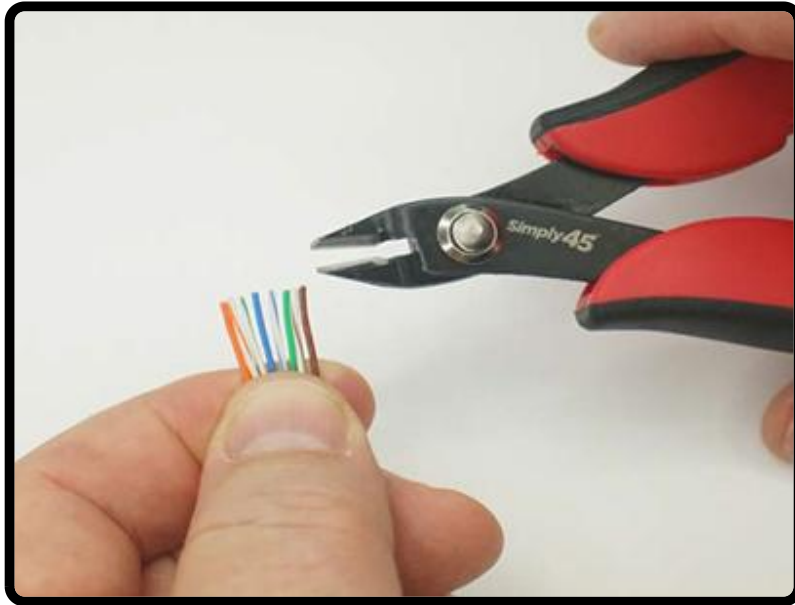
STEP 1

If using Cat6 UTP cable, trim center spline/pair separator as close to the cable jacket as possible without nicking any of the wire conductors.



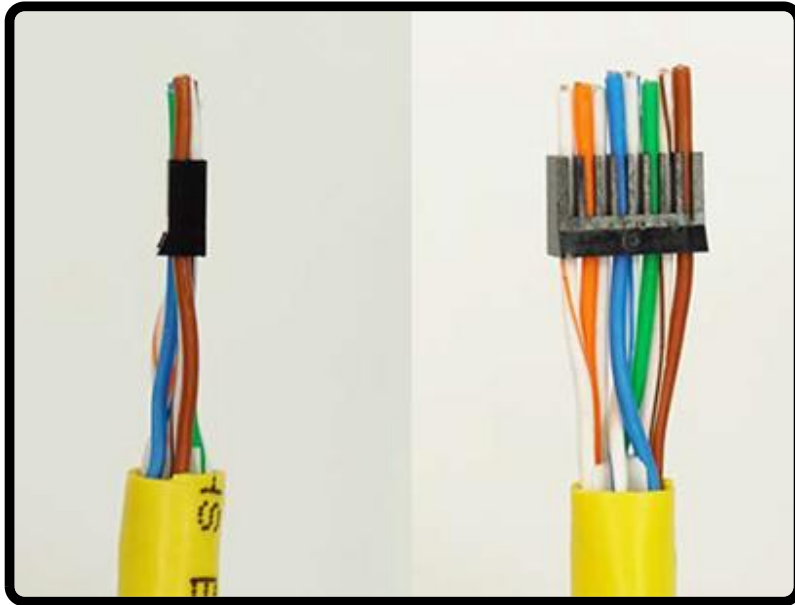
STEP 2

Make sure each wire conductor is straight. We recommend using the Simply45 Adjustable LAN Cable Stripper (Part: S45-S01BL/YL) that has a wire straightener comb on the top.



STEP 3

Then straighten and align wires to correct alignment pattern (Type A or B). The B Pattern is most commonly used today. Using angled flush cutter tool (such as Simply45 part: S45-801), trim wire ends straight before inserting into the load bar.



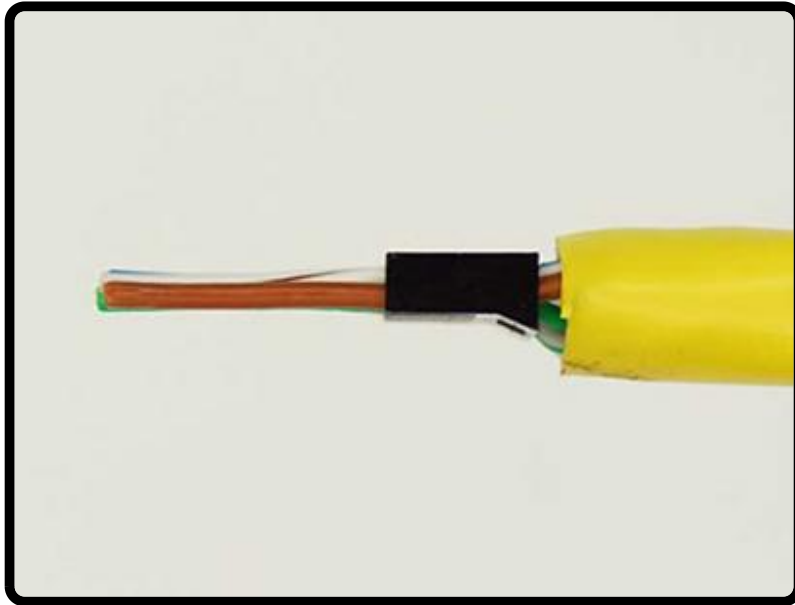
STEP 4

Insert the Pattern Aligned wires as shown above (B pattern shown)

WIRING CHART

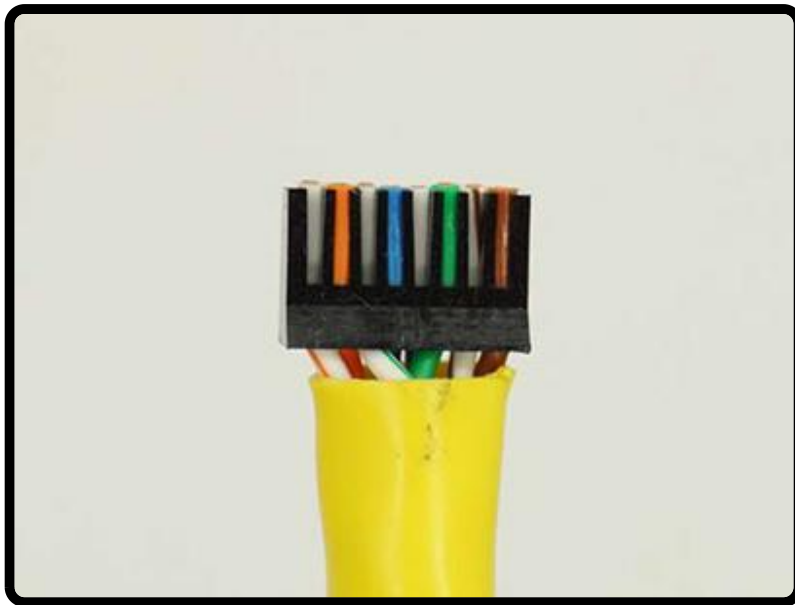
T568A	1	2	3	4
	W/G	G	W/O	BL
	5	6	7	8
	W/BL	O	W/BR	BR

T568B	1	2	3	4
	W/O	O	W/G	BL
	5	6	7	8
	W/BL	G	W/BR	BR



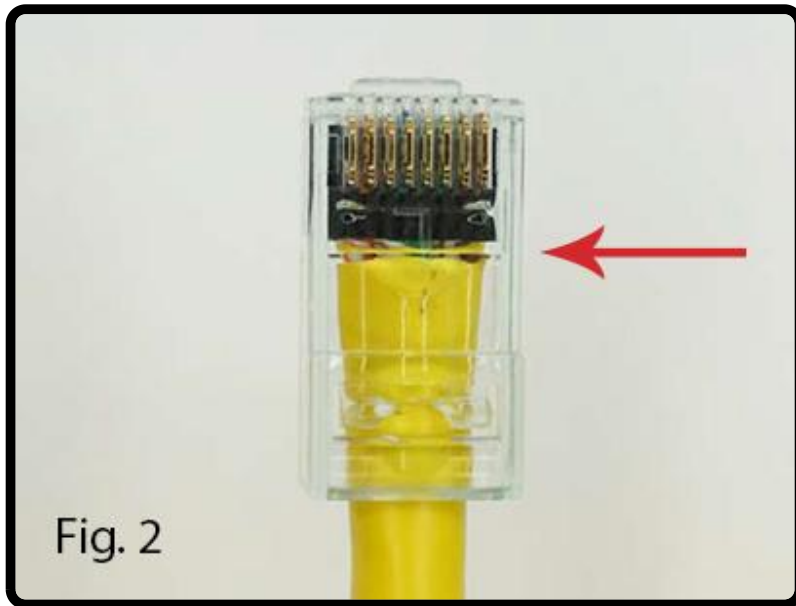
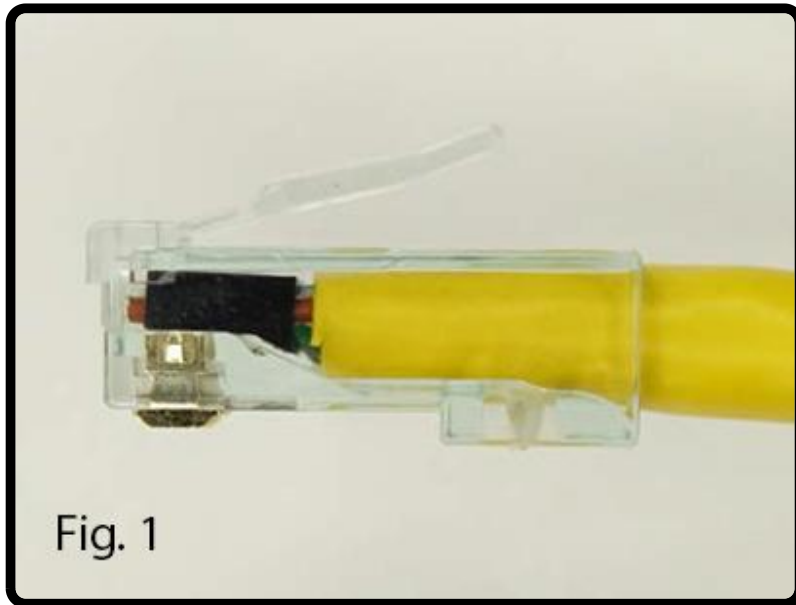
STEP 5

Slide **Bar45**® down until it touches or comes close to the cable jacket.



STEP 6

Then trim wires flush with the load bar using the Angled Flush Cutter (part: **S45-801** (<https://simply45.com/shop/tools/cutters/s45-801-simply45-premium-5-flush-cutter-tool/>)). Please be sure to trim wires properly. If wires are not trimmed close to the load bar, the load bar will not set properly over the Plug pins.



STEP 7

Insert the cable with the **Bar45®** into the plug with the load bar over the pins. (fig. 1). Notice in the picture (fig. 2) that the cable jacket should come to the horizontal line underneath the plug (S45-1100).



STEP 8

Insert the loaded plug into the Simply45 Crimper socket. Be sure that plug is fully inserted. Then complete crimping cycle.