

KEYMASTER POLDIAG

World leaders in servicing BCM2 VAG IMMO

Read/Decode/Extract IMMO data from **BCM2** with
LOCKED NEC chip! 2013-2018

ALL BCM2 VERSIONS (8K0, 4H0)

SW 621, 633, **711**, 825 and much more...

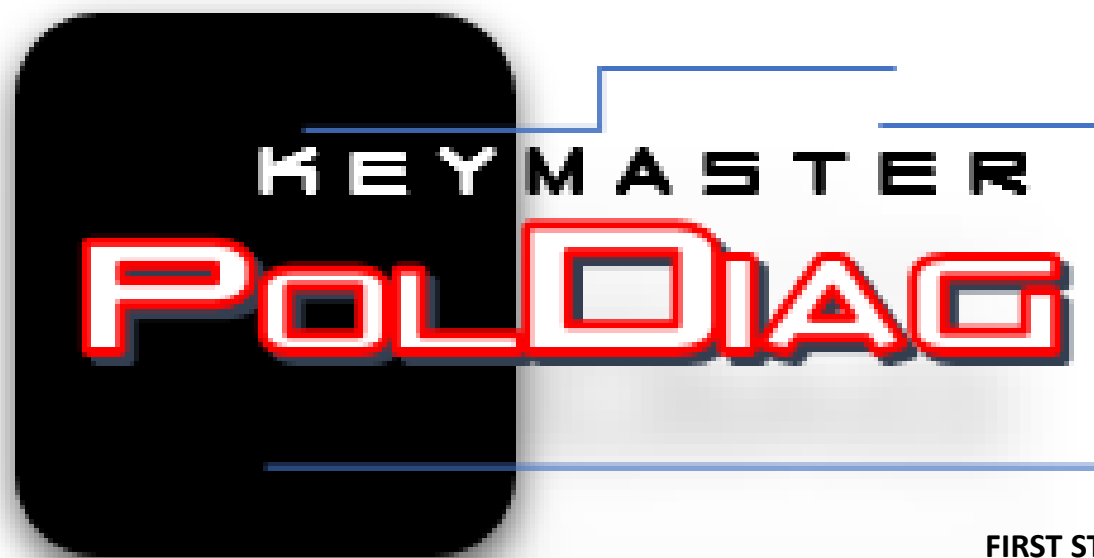
NO NEED WORKING KEY!



Support Audi 2008-2018:

A4, S4, RS4, A5, S5, RS5, Q5, SQ5, A6 C7, S6, RS6, A7, S7, RS7,
A8, S8, and Touareg

www.info.autokey.by
www.keymaster.pl



FIRST STEPS WITH KEYMASTER POLDIAG

Installation and drivers.

The software can be downloaded with the drivers from

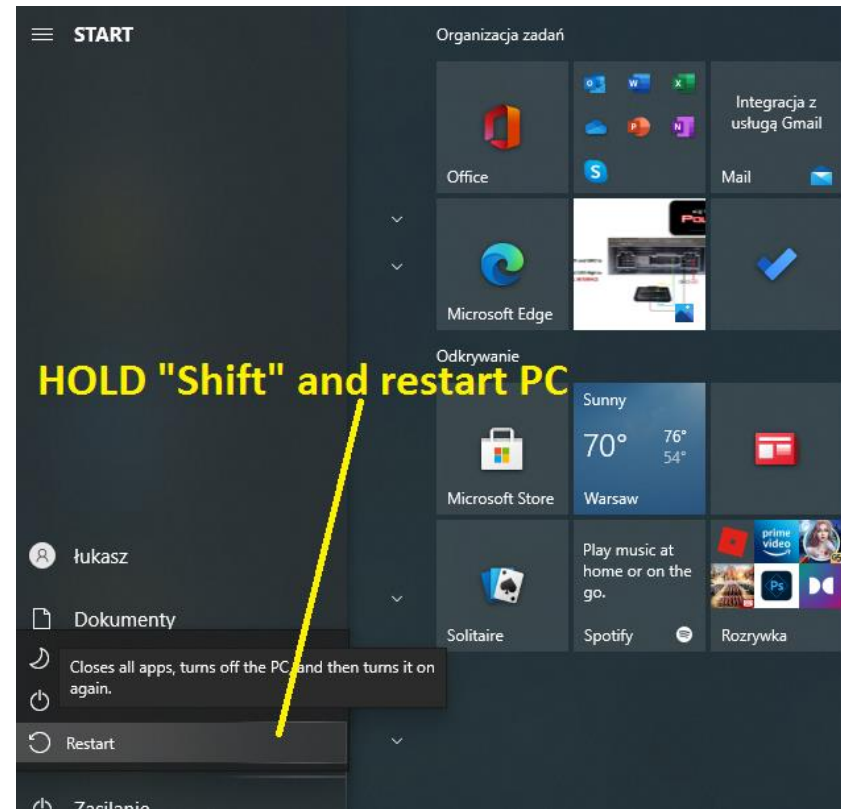
keymaster.pl/download

or

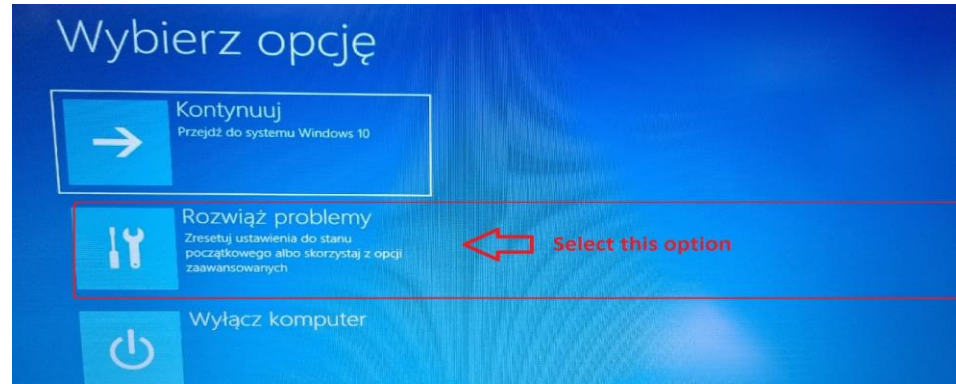
info.autokey.by

CAUTION. Windows 10 requires special driver installation procedures.

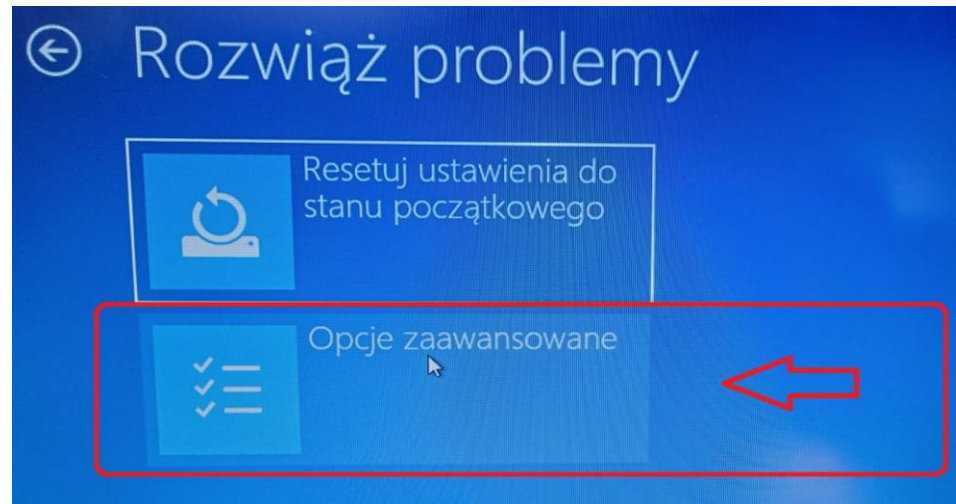
1. Press and hold down the "**SHIFT**" key
2. Perform a restart while still holding "**SHIFT**"



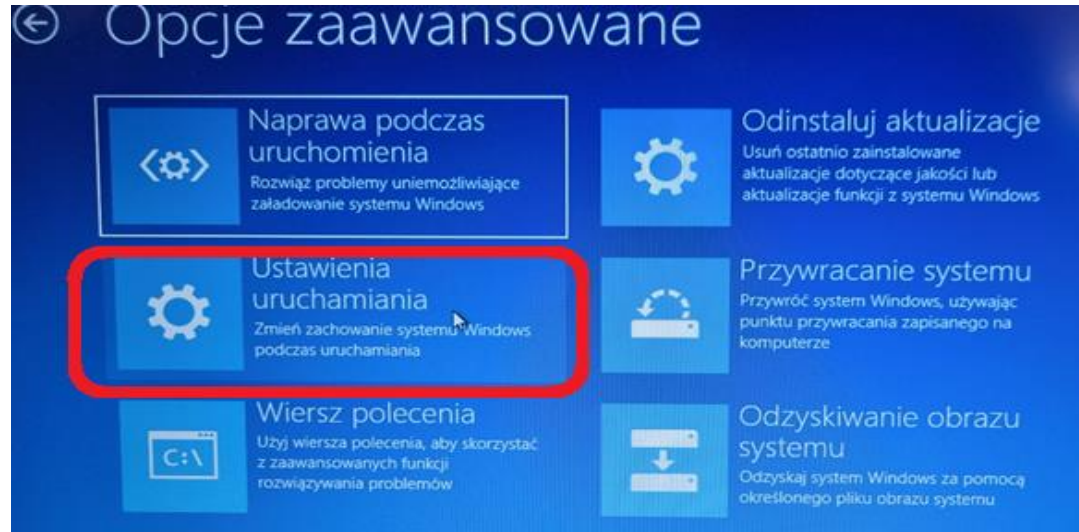
You will see a window during the reboot.



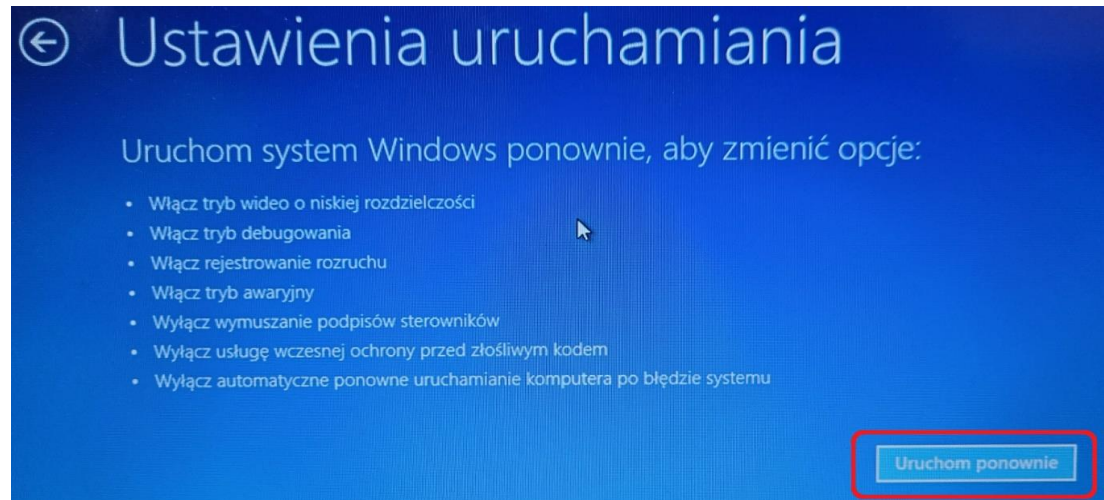
Next select “ Advanced Options”



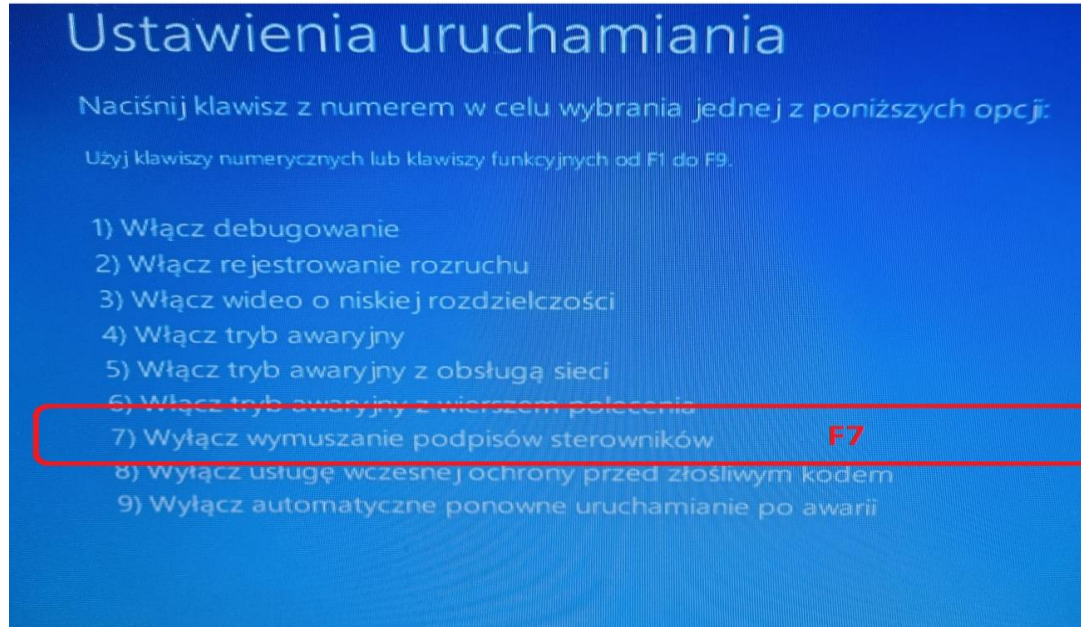
And “Startup settings”



And “Restart”



Now press **F7** (**Disable Driver Signature Enforcement**)

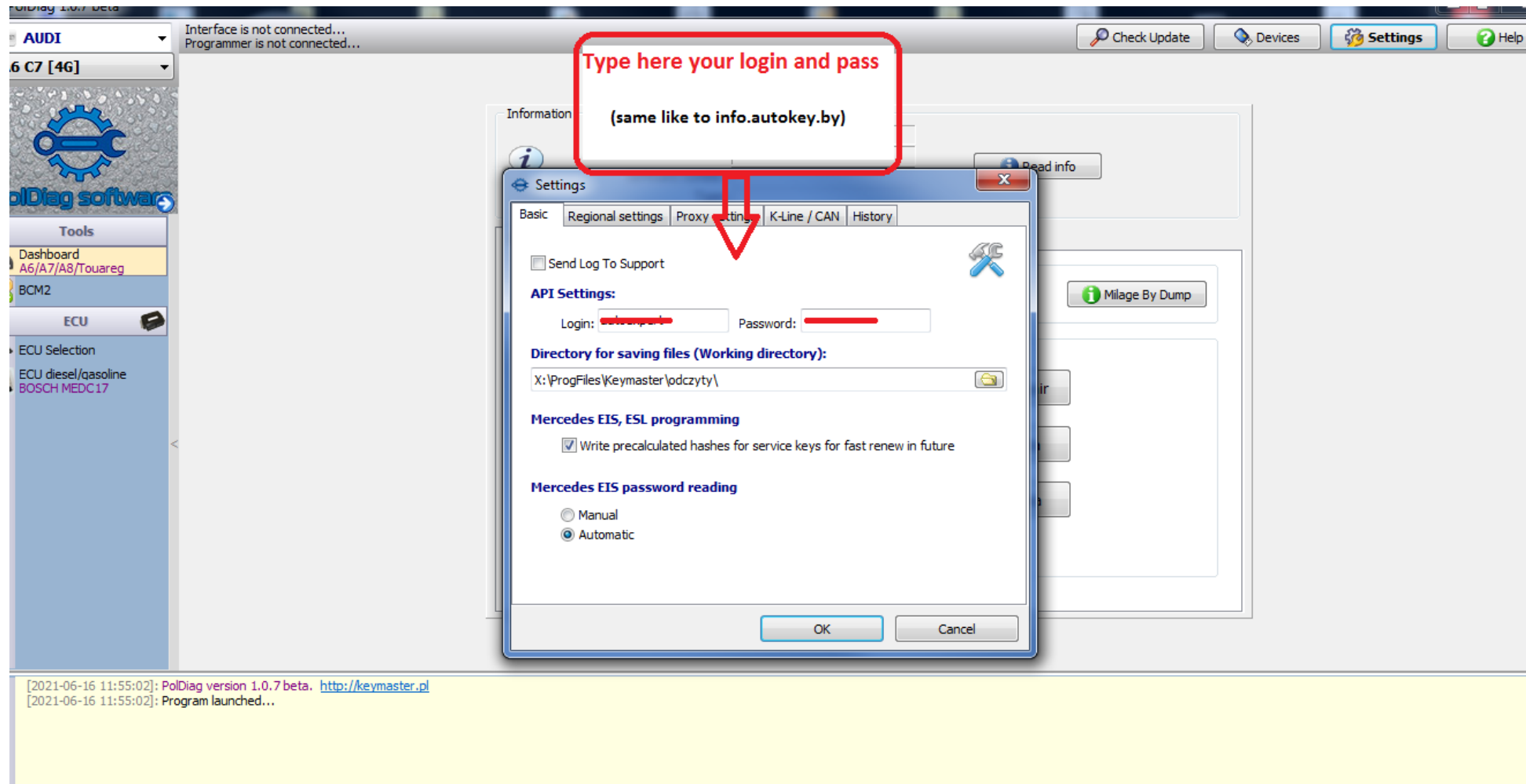


Now, after booting the system, connect the Keymaster PolDiag devices to the USB.

Go to “DEVICE MENAGER” and install the drivers, indicate the location where you saved the downloaded file.

Note the drivers for WIN7 and WIN10 are the same.

To access our server, please go to our website info.autokey.by and register by entering your email address and serial number of the device. The obtained login and password should be entered in the program's settings.

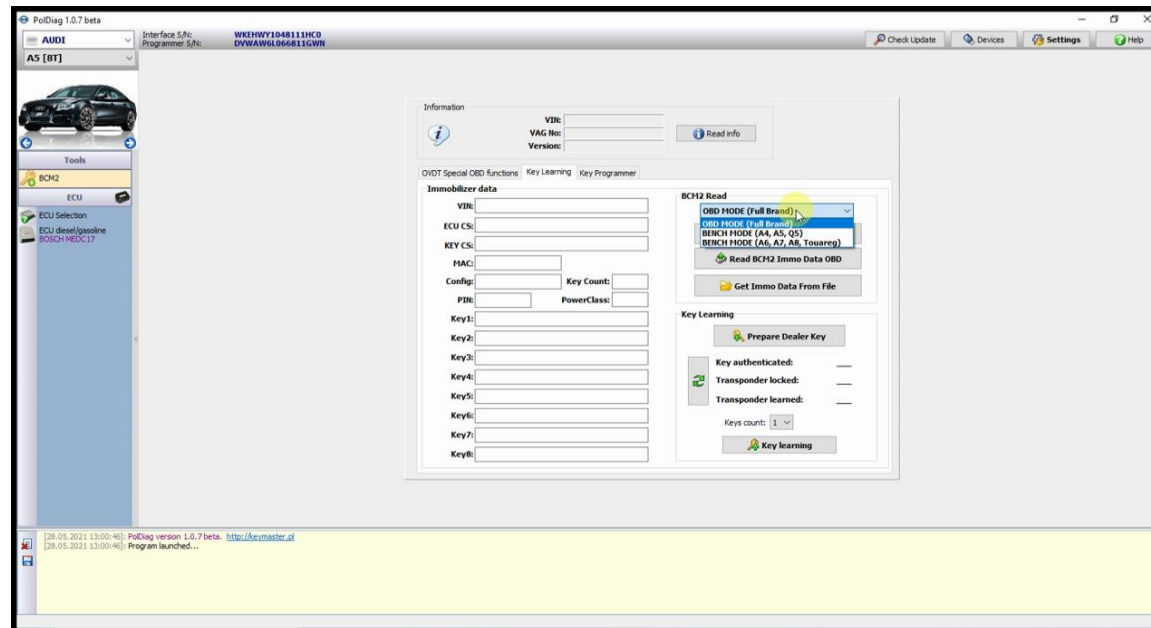


DONE. You can use Keymaster PolDiag soft.

How USE BCM2 locked NEC immo data extractor.

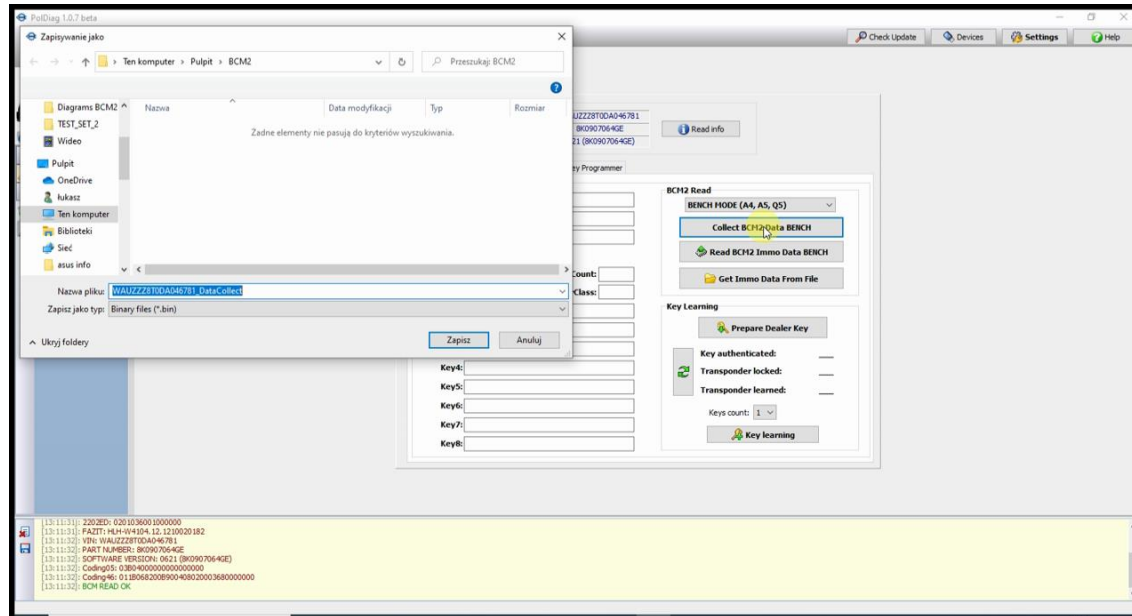
Connect the **adapter cable wires** as shown in the [diagram](#) or [diagram for NEC 3635 & NEC 3382](#)
Connect the power and [CAN HIGH and CAN LOW](#).

Open our software. Go to the CAR MODEL-> BCM2 section → KEY Learning
Now select connection type as “**BENCH MODE**”

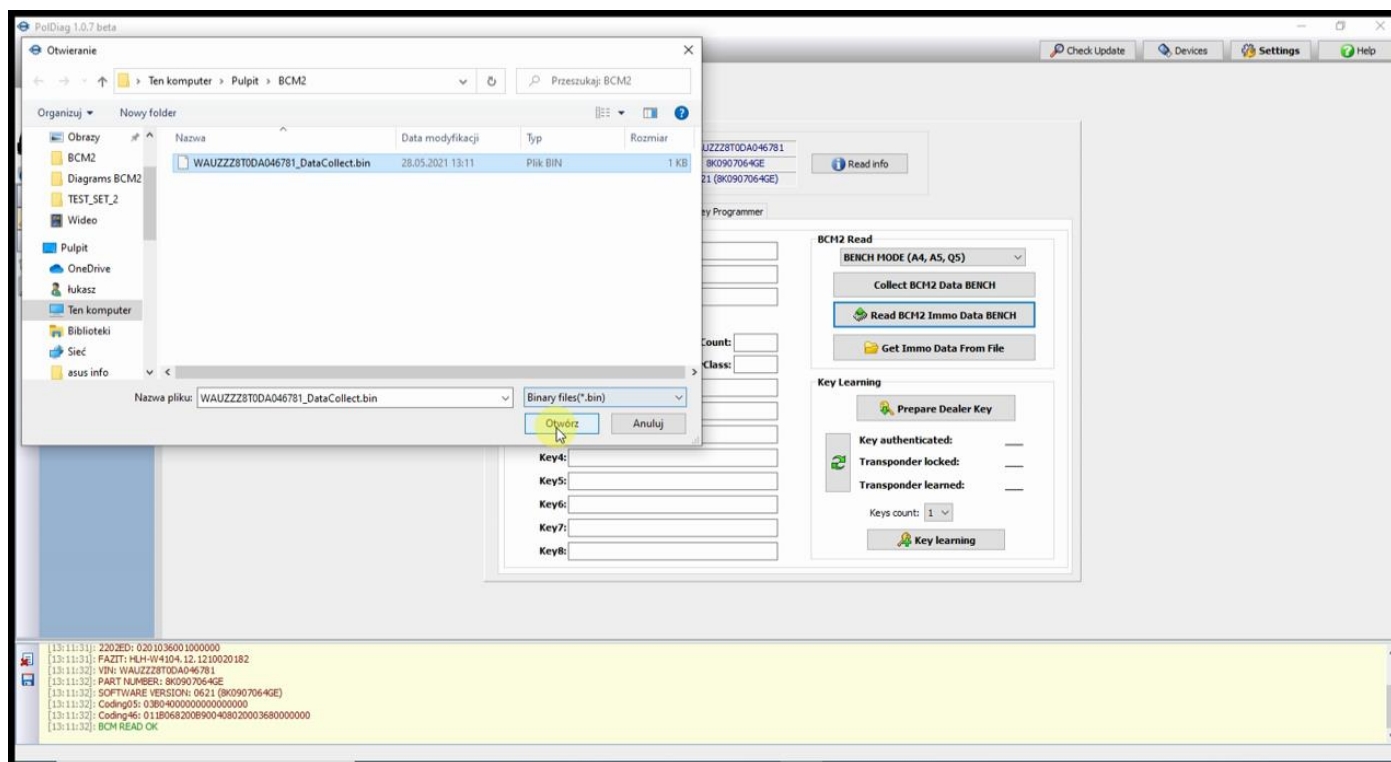


and click **“Collect BCM2 DATA BENCH”**

After a few seconds, the software will ask you to select where to save the **special file**-> select location and click **“save”**

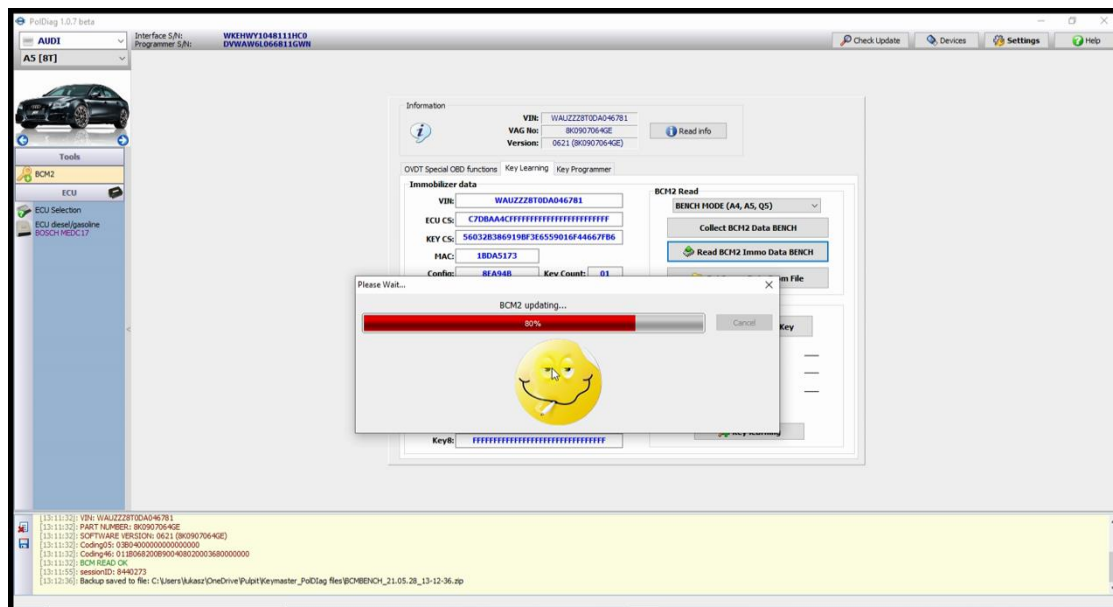


Next click “**Read BCM2 immo data BENCH**”-> and chose file saved in **previus** step.



Now the software will start **BCM2 preparation** and then the **immo data extracting**.
At this point, it will display **CS, VIN, MAC, number of saved keys** and all necessary data.

NOTE- Do not perform any activities until this process is completed!!



After completing this step disconnect the wires from the BCM2 and fit it back to the car.

Now you can either make the **dealer key** or save the immo data for future use.

DO NOT CLOSE SOFTWARE!

Important information

If you want to make another **DEALER KEY** in the **future**,
You don't need to reread bcm2 in „**bench mode**”
Just connect our **OBD INTERFACE** to the car's OBD
and select "**Read Immo data**„

The software will **recognize the car and then ask whether to display the data found on the server.**

Select "**Yes**" to see immo data that was saved on ur server.
Now You can prepare and learn the next Dealer Key.

Dealer KEY PREPARING

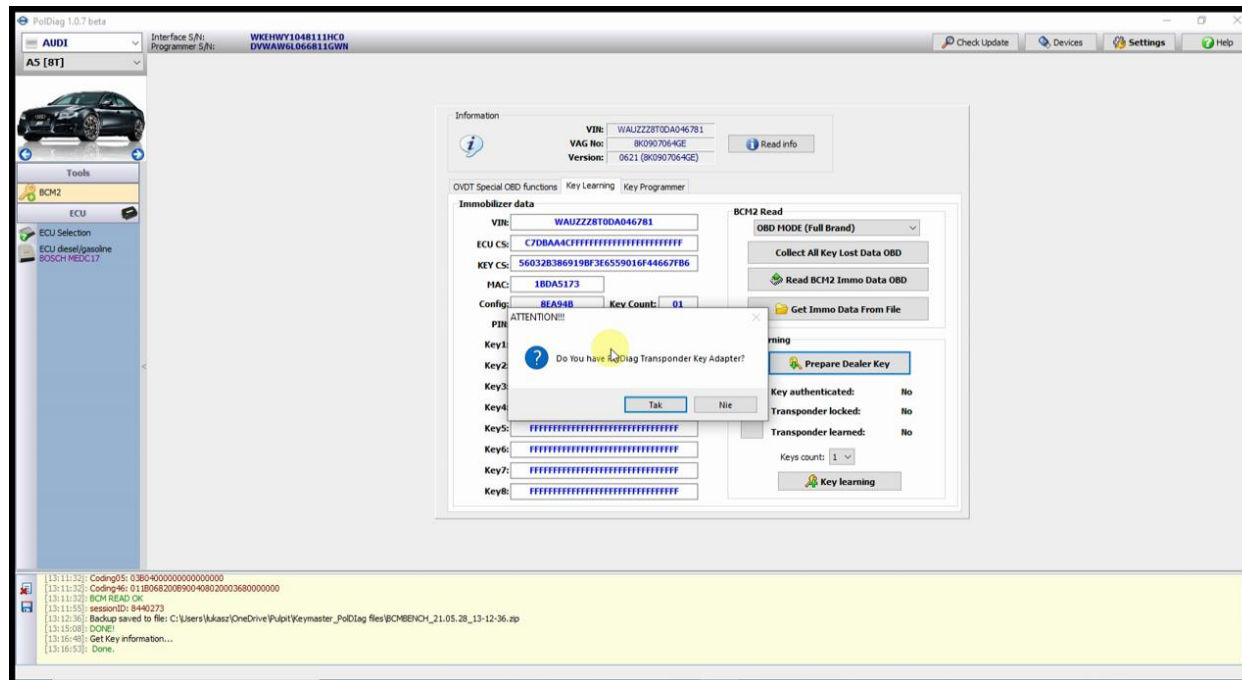
There are **two ways** to prepare the dealer key.

1. Keymaster PolDiag COIL ADAPTER (fast) :

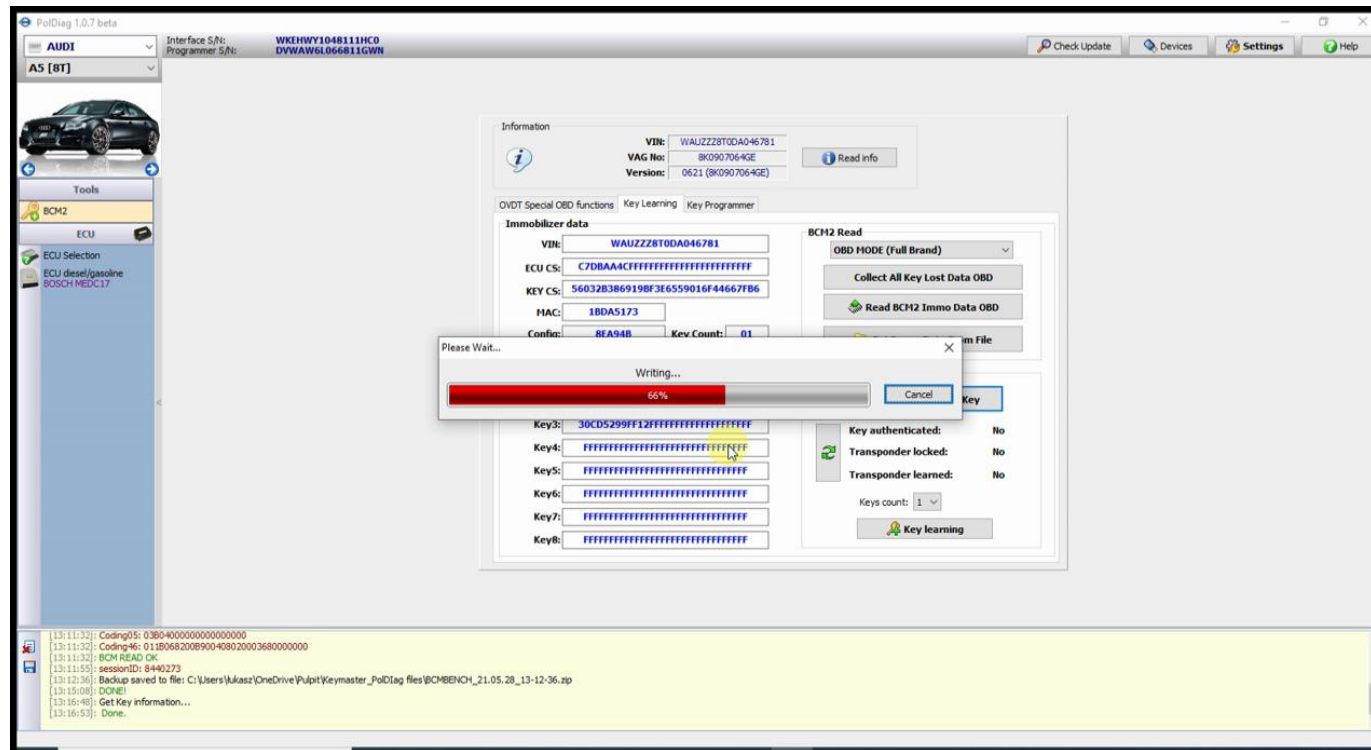
Press “**Prepare Dealer Key**”

Software ask You if You have ur **Coil Adapter?** -> Select “**YES**” and connect the **COIL ADAPTER** to the programmer.

Insert new or renewed key to **COIL ADAPTER** and press “**OK**”



The software after check key will save the **nessesary data** in the key and **confirm the end of the process**.



Done. Dealer Key is ready

www.info.autokey.by
www.keymaster.pl

2. Dealer KEY from KEY FILE

You can prepare DEALER KEY also when you have **eprom file** read from new or renewed key using other device.

Press **“Prepare Dealer Key”**

Software ask You if You have ur **COIL ADAPTER?**-> select **“No”** and then select the **eprom key file** from your disk.

The software will check and save the nessesary data in **key file**.

Save prepared file on Your disk.

Last step is **write prepared file** to the key using the **same tool** as you read.

Dealer key is ready.

KEY LEARNING STEPS.

Connect **Keymaster PoDiag OBD INTERFACE** to Car OBD.

Go to the **CAR MODEL-> BCM2** section → **KEY Learning**

Insert the prepared key into the ignition, choose the number of keys you want learn (In our example 1) and select **“KEY LEARNING”**

Confirm that key is in IGNITION.

The software will **ask** if the dashboard **display shows L1 / 1?** (In our example we learn 1 key)

If so click **“OK”** and wait to end process confirmation.

DONE.

KEY IS READY TO START CAR.

IMPORTANT !!!!

AUDI A6 C7, A7, A8, Touareg 2010+ ALL KEY LOST - ADDITIONAL ACTION REQUIRED!

Please note that models such as the Audi A6 C7 ,A7,A8 to prepare the DEALER KEY when **ALL KEY ARE LOST** require additional data called „ **SYNCRO data**”

Our team can calculate syncro data after sending us the files from the **engine ecu, gearbox ecu** and (if exist) **ELV**.
(paymant service)

Step1 Extract IMMO DATA from LOCKED BCM2 with KEYMASTER POLDIAG.

Step2 Send to us togheter with READOUT from **ENGINE ECU, GEARBOX ECU** ,and **ELV** to get „syncro data”

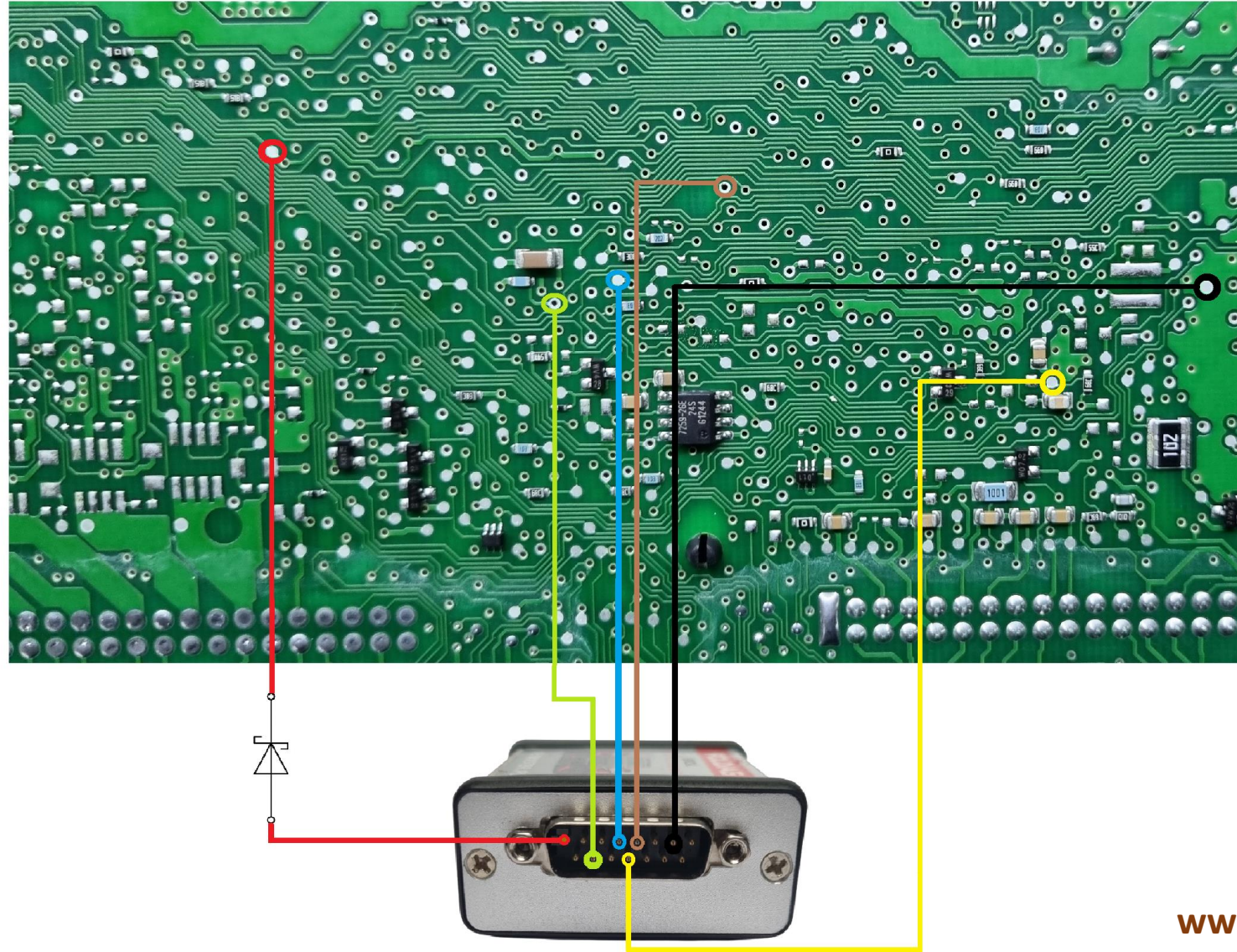
KeymasterPoldiag@gmail.com

www.info.autokey.by
www.keymaster.pl

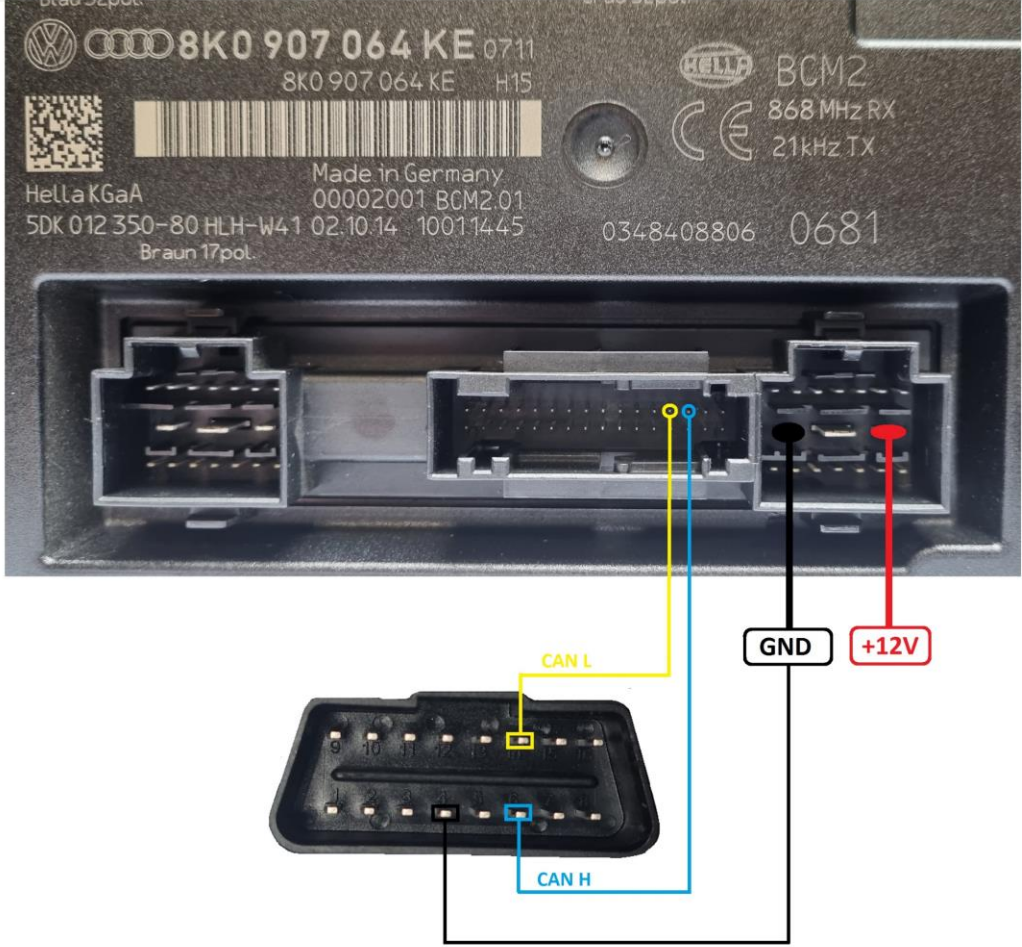
BCM2 PCB CONNECTION DIAGRAM KEYMASTER POLDIAG

WIRES DESCRIPTION

- VCC (with diode)**
- GND**
- RXD**
- TXD**
- PDX (FLMD0)**
- RST (reset)**



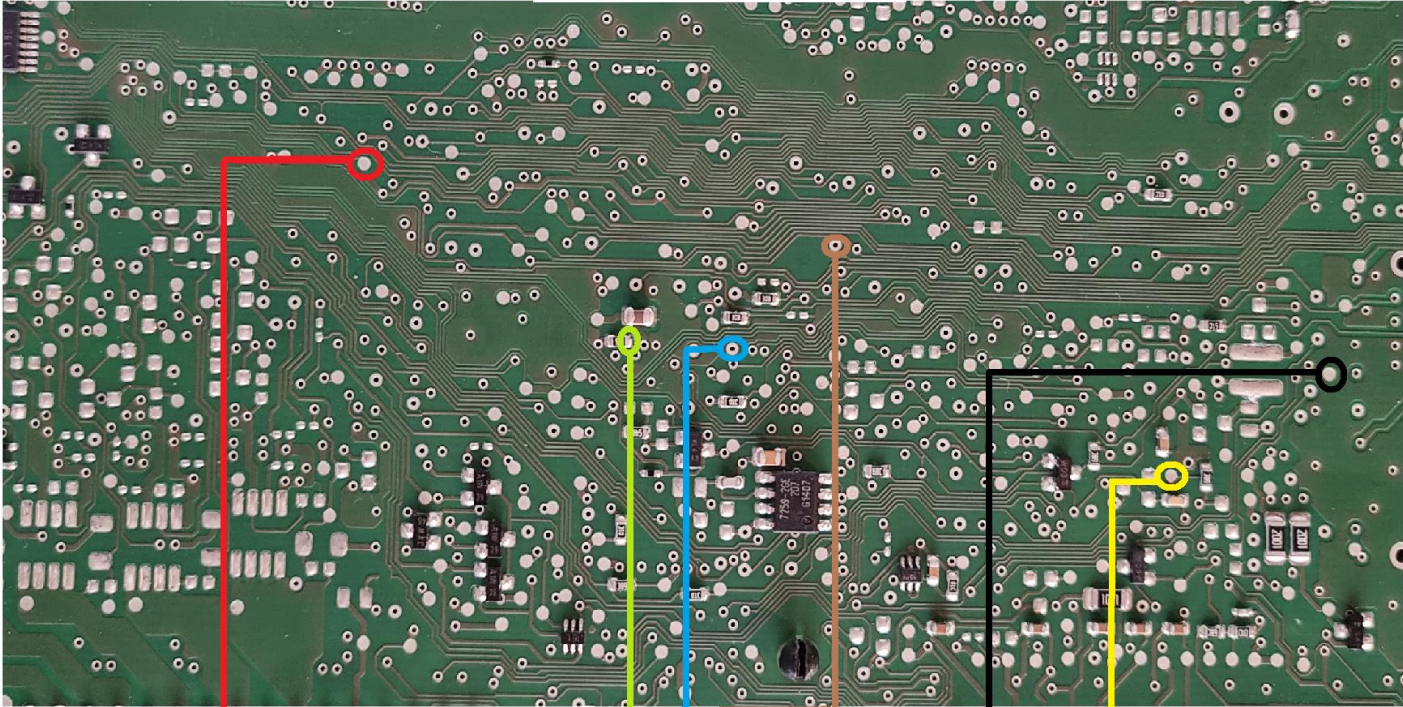
**BCM2
Bench diagram
Keymaster PolDiag**



BCM2 with
NEC 3635
NEC 3382
Keymaster PolDiag

WIRES DESCRIPTION

- VCC (with diode)
- GND
- RXD
- TXD
- PDX (FLMD0)
- RST (reset)



NEC 3635 or NEC 3382!