

Kwikset



POCKET DOOR LOCK

Kwikset's innovative pocket door locks offer traditional and contemporary styles for any sliding door.

- New contemporary square trim
- Fits standard door prep
- Push-to-pull latch for easy access
- Ideal for spaces with a concealed door like an office, bathroom, laundry room or closet door



Pocket Door Lock
in Stainless Steel

#1 SELLING U.S. LOCK BRAND*

*Source: TraQline US quarterly brand unit share report, Q4 2006 through Q1 2019

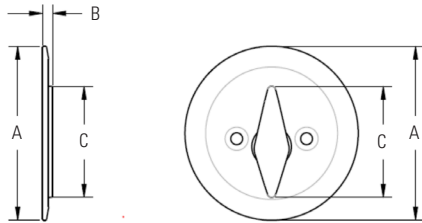
372541-5/19

Specifications

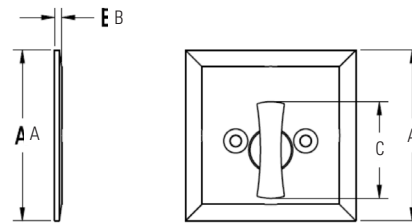
Door Prep	Cross Bore 2-1/8". Edge Bore 1".
Backset	2-3/8"
Faceplates	1" x 2-1/4". Square or round corner.
Strikes	1" x 2-1/4". Square or round corner.

Bolt	1" throw.
Door Handing	Reversible for right or left-handed doors.
ANSI/BHMA	N/A

Dimensions

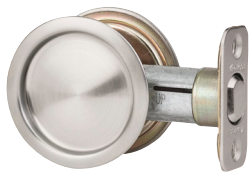


Design	A	B	C
Round	2 15/32"	1 5/32"	1 19/32"

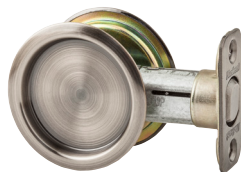


Design	A	B	C
Square	2 7/16"	1 5/32"	1 3/8"

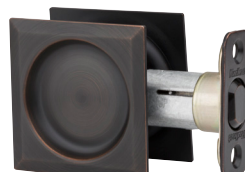
Finishes



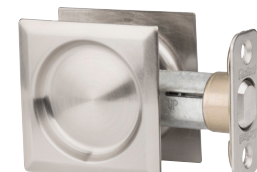
Satin Nickel 15



Antique Nickel 15A



Venetian Bronze 11P



Satin Nickel 15



Stainless Steel 32



Satin Chrome 26D



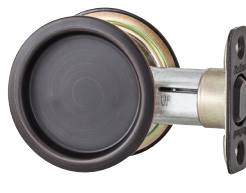
Polished Chrome 26



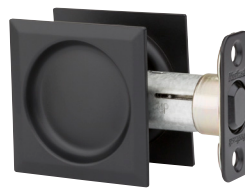
Satin Chrome 26D



Matte Black 514



Venetian Bronze 11P



Matte Black 514

LIFETIME WARRANTY