

L78 LC SERIES

S Series: Latch Lock - Less Cylinder



Easily field reversible between door and drawer functions.

SPECIFICATIONS

Reversible: Easily field reversible between door and drawer functions

Rekeyable: Easily rekeyable via set screw cylinder release mechanism

US Patent Nos: 4,899,563; 7,874,189 B2

Body: Zinc die cast

Cylinder length: 1-1/8" or 1-3/8"

Barrel diameter: 1-1/8"

Finish: 26D or US3

Packaged: Packed 10 per box

INCLUDED ACCESSORIES

For 1-1/8" barrel length locks:

10-351 plastic spacers (qty 2)

L78ST-1 lipped strike

For 1-3/8" barrel length locks:

L78ST-2 lipped strike

L78-LC CYLINDER INFORMATION

Cylinder: Not included

Accepts: Schlage compatible key-in-knob cylinders including ILCO cylinder #1599

Includes: All parts necessary to work with other manufacturers' cylinders

Compatible electronic cylinders: Medeco LOGIC, ASSA CLIQ or VIDEX CyberLock key-in-knob cylinders

OPTIONAL ACCESSORIES

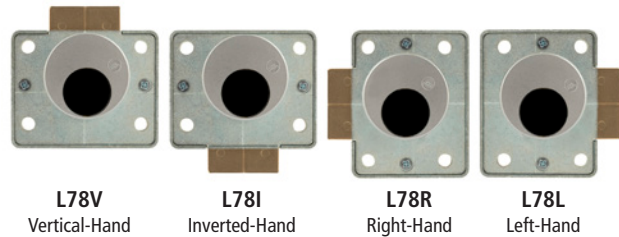
Trim collar: TR78 trim ring

Spacers: 10-351 (1/8" thick), 10-348 (1/4" thick), 10-349 (1/2" thick)

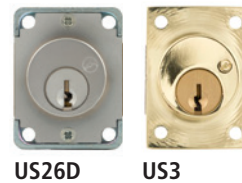
Cylinder: 78-201 Series

L78 LC

Function: Latch lock



AVAILABLE FINISHES



INCLUDED ACCESSORIES



10-351 internal spacers
For a flush fit on varying material thicknesses



L78ST Matching lip strike



WARNING: This product can expose you to chemicals including chromium, which is known to the State of California to cause cancer and birth defects or other reproductive harm. For more information go to www.P65Warnings.ca.gov.



OLYMPUS[®]
LOCK
INC

L78 SERIES

S Series: Schlage C Keyway Latch Lock

Easily field reversible between door and drawer functions.

OPTIONAL ACCESSORIES - See our website for a complete list of optional components.

Internal Plastic Spacers

- 10-351 1/8" thick plastic spacers
- 10-348 1/4" thick plastic spacers
- 10-349 1/2" thick plastic spacers

Strikes

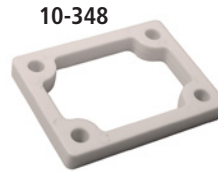
- Metal strikes: L78ST-2

Trim Ring

- TR78 trim ring



10-351



10-348



10-349



TR78



L78ST lip strike

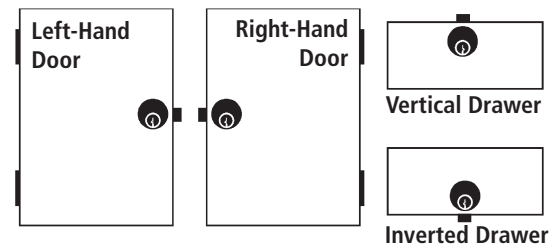
78-201 Series

Schlage C keyway cylinders



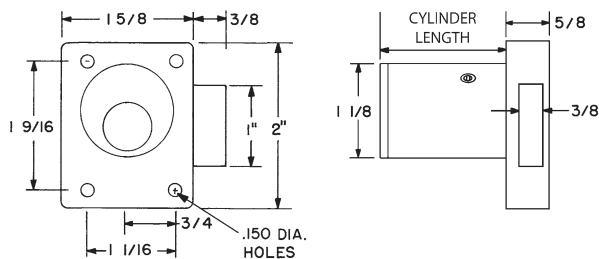
SCHLAGE style C keyway replacement cylinder

HANDING CHART

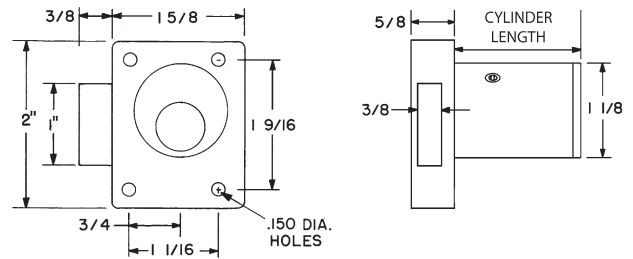


DIMENSIONS

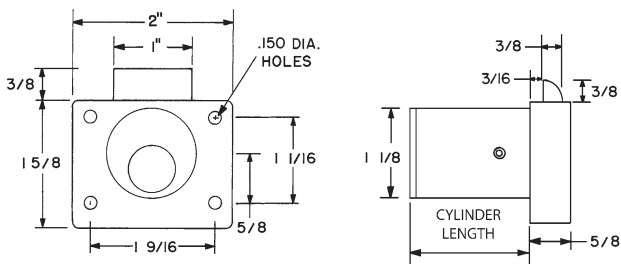
L78L - Left Hand (LH)



L78R - Right Hand (RH)



L78V - Vertical Hand (VH)



L78I - Inverted Hand (RH)

