

# ETS SERIES

## Exterior Through-Bolt Mounting Plates for Olympus Cabinet Locks



U.S. Patent No.  
D490,686 S

### SPECIFICATIONS

Our through-bolt trim spacers, pulls and templates provide added security and flexibility to our line of door and drawer cabinet locks. These items can be used in combination or separately to achieve a variety of configurations. The through-bolt mounting feature provides increased security in particleboard applications.

Use with 700, 721, 754, 777, 800, 850, 854, 888, 931, 950, L72V, L92V

- ETS1-125 - 1/8" trim spacer
- ETS1-250 - 1/4" trim spacer
- ETS1-PL - Cabinet pull
- ETST1 - Trim spacer template

Use with 777, 888

- ETS4 - Trim spacer for 777
- ETS5 - Trim spacer for 888
- ETST1 - Trim spacer template

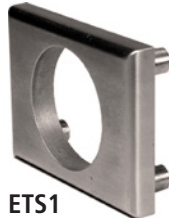
Use with 100, 200, 500, 600, L20V

- ETS2-125 - 1/8" trim spacer
- ETS2-250 - 1/4" trim spacer
- ETS2-PL - Cabinet pull
- ETST2 - Trim spacer template

Use with 999, 988, 997, 996

- ETS6 - Trim spacer
- ETST6 - Trim spacer template

**ETS1** For 1-1/8" barrel diameter locks: 700, 721, 754, 777, 800, 850, 854, 888, 931, 950, L72V, L92V



ETS1  
2 sizes available



ETST1



ETS1-PL

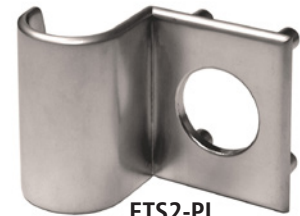
**ETS2** For 7/8" barrel diameter locks: 100, 200, 500, 600, L20V



ETS2  
2 sizes available



ETST2



ETS2-PL

**ETS4 | ETS5** For 1-1/8" barrel diameter locks: 777, 888



ETS4



ETS5

**ETS6** For 7/8" barrel diameter locks: 999, 988, 997, 996



ETS6



ETST6



**WARNING:** This product can expose you to chemicals including chromium, which is known to the State of California to cause cancer and birth defects or other reproductive harm. For more information go to [www.P65Warnings.ca.gov](http://www.P65Warnings.ca.gov).



**OLYMPUS**  
**LOCK** INC.

# ETS SERIES

## Exterior Through-Bolt Mounting Plates for Olympus Cabinet Locks

### ETS SERIES

#### EXTERIOR THROUGH-BOLT PLATE

**Attractive mounting:** External metal through-bolt plate allows for flush mounting of the cabinet lock face with face of cabinet.

**Increases security:** Reinforces the cabinet face by direct connection of lock mounting screws to through-bolt plate's binder posts.

**Available finishes:** US3 and 26D

**Includes:** Mounting screws

### ETST SERIES

#### SPACER/TEMPLATE FOR THROUGH-BOLT PLATE

**Mounting guide:** The spacer/template allows for proper mounting hole placement of external through-bolt plate.

**Spacer:** Can be used as a 1/8" shim spacer

**Available finishes:** US3 and 26D

### ETS-PL SERIES

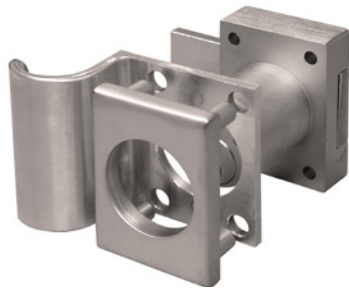
#### THROUGH-BOLT HANDLE/PULL

**ETS1-PL:** External metal pull requires use of ETS1. For use with 1-1/8" locks: 700, 721, 754, 777, 800, 850, 854, 888, 931, 950, L72V, L92V

**Available finishes:** US3 and 26D

**ETS2-PL:** External metal pull for 7/8" diameter locks: 100, 200, 500, 600, L20V

**Available finishes:** US3 and 26D



### ETS1-PL

Cabinet pull for use with 1-1/8" diameter cabinet locks. (Requires ETS1)



ETS1-PL

### ETS2-PL

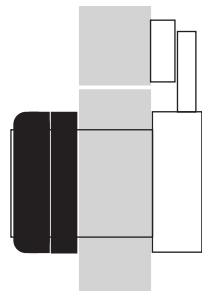
Cabinet pull for use 7/8" diameter cabinet locks.



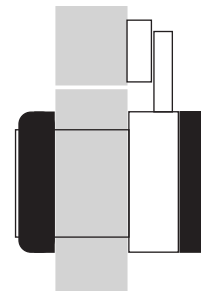
ETS2-PL

## External Through-Bolt Plate & Template

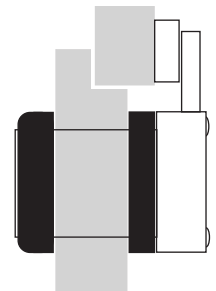
Below illustrations do not represent all possible configurations.



Flush mount with spacer and template on front of cabinet



Flush mount with spacer in front and template behind



Partial overlay with spacer in front and template between cabinet and back of lock