

DCR SERIES

*R Series: 3/4" Barrel Diameter
Grade 1 Cam Lock*

**ANSI/BHMA Grade 1
E07261 | E07271**
**Woodwork Institute (WI)
acknowledged product**

SPECIFICATIONS

Keying: Can be keyed together with other R Series locks

Cylinder length: Four sizes available (see table with dimensions on page 2)

Rekeyable: Easily rekeyable via cylinder retainer clip

ANSI/BHMA: Passed ANSI/BHMA A156.11 Grade 1 performance requirements. Equivalent to E07261 / E07271.

US Patent Nos: 5,038,589; 5,737,950

Body: Zinc die cast

Cylinder: Zinc die cast, pin tumbler

Standard function: Key removable in locked or unlocked position.

Key retaining function: Alternate key-retaining shifters are available separately for key removable in locked position only.

Cams: 2 reversible cams work in all positions

Face: 1" face covers splintering, no additional trim ring required

Finish: 26D or US3

Packaged: Packed 10 per box

KEYING INFORMATION

Keyway: R Series (equivalent to CCL R1 system)

Keys: Includes 2 keys per lock

Stock keying: KD/KA - 5 pin standard

Stock KA#: 4T21579, 4T37526

Masterkeyed: 5 pin standard

Grand masterkeyed: Available

Keyblank 5-pin: KBR-5-NP

(equivalent to CO106, 1003A)

INCLUDED ACCESSORIES

Straight cam #DCNP-100-SC

Offset cam #DCNP-100-BC

Anti-rotation plate #DCNP-500-ARP

OPTIONAL ACCESSORIES

See page 2.

DCR

Keyway: R Series, CCL R1 Keyway

Handing: Includes 2 cams that work all handings (door or drawer)

DCR SERIES FEATURES

- Non-handed—Field reversible locking positions: right-hand, left-hand, vertical and inverted
- Only 2 cams required—Ships with reversible straight and offset cams that meet requirements of all locking positions
- Easy rekeyability—Allows for a quick installation and increased productivity
- Anti-rotation plate—Eliminates lock rotation, prevents loosening of fixing nut, and provides additional security in particleboard applications



AVAILABLE FINISHES

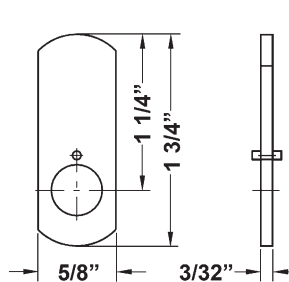


US26D

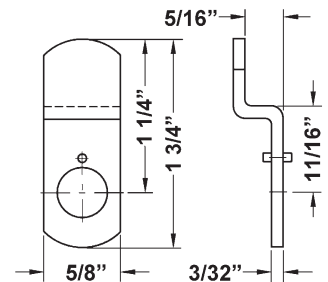


US3

INCLUDED CAMS



DCNP-100-SC
straight cam



DCNP-100-BC
offset reversible cam



WARNING: This product can expose you to chemicals including chromium, which is known to the State of California to cause cancer and birth defects or other reproductive harm. For more information go to www.P65Warnings.ca.gov.



**OLYMPUS®
LOCK
INC**

DCR SERIES

R Series: 3/4" Barrel Diameter
Grade 1 Cam Lock

ANSI/BHMA Grade 1
E07261 | E07271

Woodwork Institute (WI)
acknowledged product

OPTIONAL ACCESSORIES - See our website for a complete list of optional components.

Other Accessories

Key-retaining cam shifters

- For door function: DCNP-200-KDR
- For Drawer function: DCNP-200-KR

Washers

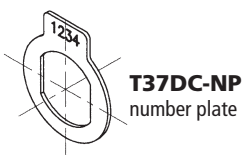
- Pronged wood washer: DCNP-SPW
- Self-adhesive clear plastic washer for mounting lock on glass: DCNP-GW

Finger Pull

- Finger pull: DCNP-300-FP

Number Plates

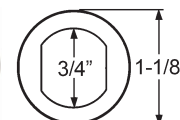
- T37DC-NP number plate



DCNP-SPW
pronged wood washer



DCNP-GW
self-adhesive clear plastic washer for mounting lock on glass

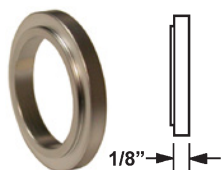


DCNP-300-FP

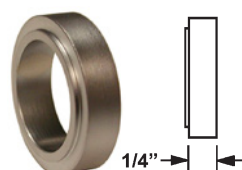
TRB7 Series Trim Collars

Finish: US26D

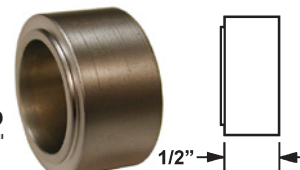
TRB7-18-26D
Spacer collar, 1/8"



TRB7-14-26D
Spacer collar, 1/4"



TRB7-12-26D
Spacer collar, 1/2"



Optional Cams

Note: Offset cams are reversible and can be used in either the inbent or outbent position.

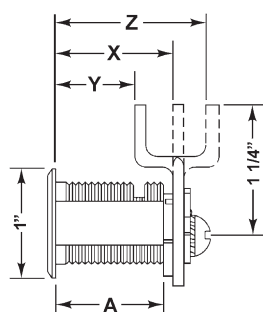
| Item | Description / Packed Each |
|--------------|---------------------------|
| DCNP-HD-875 | 7/8" long straight cam |
| DCNP-HD-1 | 1" long straight cam |
| DCNP-100-SC | 1-1/4" long straight cam |
| DCNP-100-SC2 | 1-3/4" long straight cam |
| DCNP-100-SC3 | 1-1/2" long straight cam |
| DCNP-100-LC | 3" long straight cam |

| Item | Description / Packed Each |
|--------------|------------------------------------|
| DCNP-100-BC | 1-1/4" long cam, 5/16" offset |
| DCNP-100-BC5 | 1-1/4" long cam, 1/2" offset |
| DCNP-100-HC1 | 1-1/2" long hook cam, 5/16" offset |
| DCNP-100-HD | 1-7/16" long cam, 1/2" offset |
| DCNP-100-HD2 | 1-3/4" long cam, 5/16" offset |
| DCNP-100-HD3 | 1-1/8" long cam, 5/16" offset |
| DCNP-100-LBC | 1-1/2" long cam, 5/16" offset |

| Item | Description / Packed Each |
|-------------|-------------------------------|
| DCNP-100-B1 | Straight cam with oval cutout |
| DCNP-100-B2 | U-shaped cam |
| DCNP-100-B3 | Straight hook cam |
| DCNP-100-WB | Short cam / 90° offset arm |

>> Visit our website www.olympuslock.com for complete dimension and descriptions of available optional cams.

DIMENSIONS | TYPICAL INSTALLATION



DIMENSIONS

| | For Mat. Thickness | Straight Cam (X) | Inbent Cam (Y) | Outbent Cam (Z) | Cylinder Length (A) |
|------|--------------------|------------------|----------------|-----------------|---------------------|
| DCR1 | 3/4" | 1-1/16" | 3/4" | 1-3/8" | 1" |
| DCR2 | 7/8" | 1-3/16" | 7/8" | 1-1/2" | 1-1/8" |
| DCR3 | 1-1/8" | 1-7/16" | 1-1/8" | 1-3/4" | 1-3/8" |
| DCR4 | 1-1/2" | 1-13/16" | 1-1/2" | 2-1/8" | 1-3/4" |

MOUNTING CUTOUT

