

998 | 999

N Series: Door & Drawer Latch Lock — 4-way Reversible

*Easily field reversible
between door and
drawer function*

SPECIFICATIONS

Function: Spring latch
Keying: Can be keyed together with other N Series locks
Reversible: Easily reversible between door and drawer function
Rekeyable: Easily rekeyable via set screw cylinder release mechanism
US Patent Nos: 4,899,563; 7,874,189 B2
Body: Zinc die cast
Cylinder: Solid brass, pin tumbler
Barrel length: 15/16" or 1-3/8"
Barrel diameter: 7/8"
Latch projection: 1/4"
Finish: 26D or US4
Packaged: Packed 10 per box

KEYING INFORMATION

Keyway: N Series (equivalent to National D4291 4-pin or D4292 5-pin system)
Keys: Includes 2 keys per lock
Stock keying: KD/KA - 4 pin standard
Stock KA#: 101, 103, 107, 915
Masterkeyed: 5 pin standard
Grand masterkeyed: Available
Keyblank 4-pin: KBN-4-NP (equivalent to NA14, 1069L)
Keyblank 5-pin: KBN-5-NP (equivalent to NA12, 1069LA)

INCLUDED ACCESSORIES

Strike: 999-STRIKE (slotted lip strike)

OPTIONAL ACCESSORIES

Spacer: WP24 (1/8" thick)
Trim ring: TR1256
Through-bolt hardware: ETS6 through-bolt plate



DRAWER 998V
Vertical Hand (VH)

998 Drawer

Function: Drawer lock
Handing: Available in the vertical or inverted position



DRAWER 998I
Inverted Hand (IH)

999 Door

Function: Cabinet door lock
Handing: Available in the left-hand or right-hand position



DOOR 999L
Left Hand (LH)



DOOR 999R
Right Hand (RH)

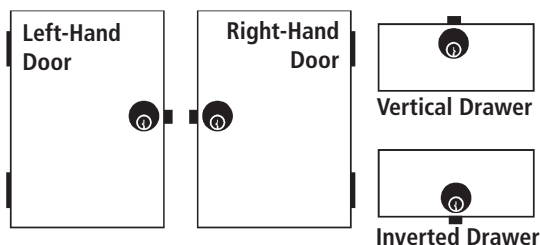
AVAILABLE FINISHES



US26D

US4

HANDING CHART



WARNING: This product can expose you to chemicals including chromium, which is known to the State of California to cause cancer and birth defects or other reproductive harm. For more information go to www.P65Warnings.ca.gov.



OLYMPUS[®]
LOCK
INC

998 | 999

N Series: Door & Drawer Latch Lock — 4-way Reversible

OPTIONAL ACCESSORIES

Internal plastic spacers

- WP24 3/32" thick plastic spacers

Strikes

- 12-1, 12-2, 12-3, 12-4, 075

Trim Ring

- TR1256 trim ring



Through-bolt plate

External metal 1/8" or through-bolt plate allows for an attractive flush mounting of the cabinet lock face. Available in US3 or US26D finish.

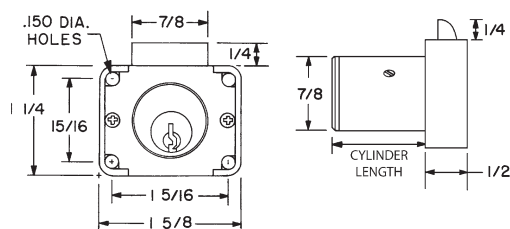
- ETS6 through-bolt plate, 1/8" thick



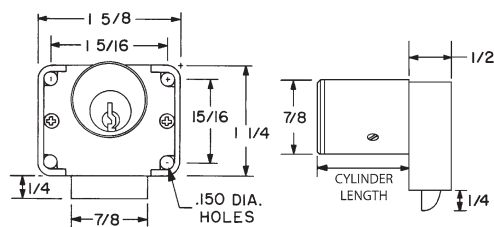
U.S. Patent No. D490,686

DIMENSIONS

998 Drawer Lock

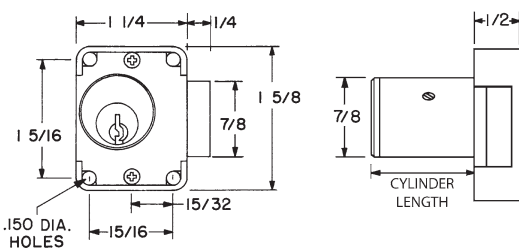


998V VERTICAL HAND

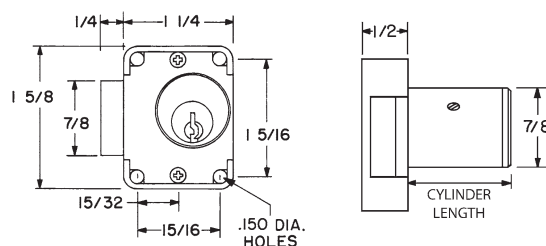


998I INVERTED HAND

999 Cabinet Door Lock



998L LEFT HAND



998R RIGHT HAND