

# 100B | 200B

## N Series: Weather Resistant Deadbolt Door & Drawer Cabinet Locks

### SPECIFICATIONS

**Weather resistant:** Includes special weather resistant components  
**Keying:** Can be keyed together with other N Series locks  
**Rekeyable:** Easily rekeyable via set screw cylinder release mechanism  
**Standard function:** Key removable in locked or unlocked position. Standard function locks are non-handed.  
**Key-retaining:** Key removable in locked position only. Specify handing (KL/KR for doors or KI/KV for drawers) when ordering.  
**Long bolt:** Extends bolt 3/4" on both ends. Specify -LB option when ordering.  
**US Patent Nos:** 4,899,563; 4,920,774  
**Body:** Zinc die cast  
**Cylinder:** Solid brass, pin tumbler  
**100B cylinder length:** 15/16" or 1-3/8"  
**200B cylinder length:** 15/16", 1-3/8" or 1-5/8"  
**Barrel diameter:** 7/8"  
**Finish:** 26D, US4, 10B or US19 (US19 not available on 100B 1-3/8" or 200B 1-5/8")  
**Packaged:** Packed 10 per box

### KEYING INFORMATION

**Keyway:** N Series (equivalent to National D4291 4-pin or D4292 5-pin system)  
**Keys:** Includes 2 keys per lock  
**Stock keying:** KD/KA - 4 pin standard  
**Stock KA#:** 101, 103, 107, 915  
**Masterkeyed:** 5 pin standard  
**Grand masterkeyed:** Available  
**Keyblank 4-pin:** KBN-4-NP (equivalent to NA14, 1069L)  
**Keyblank 5-pin:** KBN-5-NP (equivalent to NA12, 1069LA)

### INCLUDED ACCESSORIES

**100B:** 2 keys, 56-1 bar strike, and lock mounting screws  
**200B:** 2 keys, 12-3 angle strike, and lock mounting screws

### OPTIONAL ACCESSORIES

**Spacers:** WP20 (3/16" thick), WP21 (3/32" thick), WP22 (1/4" thick), WP23 (1/2" thick)  
**Strikes:** 07S, 12-1, 12-2, 12-3, 12-5, 12-4, 56-1  
**Trim collars:** TR1256  
**Through-bolt hardware:** ETS2 through-bolt plate, ETS2-PL trim pull and ETST2 template  
**Extended (long) bolt:** 15-1-35 (for use with 100B or 200B)



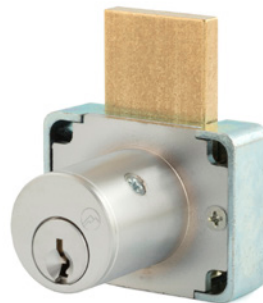
56-1

### 100B

**Function:** Cabinet door lock  
**ANSI/BHMA No.** E07121  
**Barrel length:** 15/16" or 1-3/8"  
**Extended bolt:** Extends overall bolt length by 1-1/2". Specify -LB option at time of order.



With long-bolt option



12-3

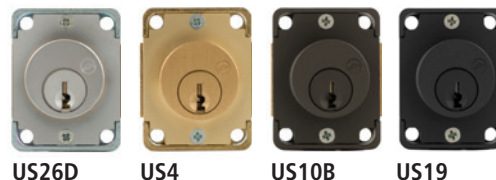
### 200B

**Function:** Drawer lock  
**ANSI/BHMA No.** E07041  
**Barrel length:** 15/16", 1-3/8" or 1-5/8"  
**Extended bolt:** Specify -LB option at time of order.



With long-bolt option

### AVAILABLE FINISHES



US26D

US4

US10B

US19



**WARNING:** This product can expose you to chemicals including chromium, which is known to the State of California to cause cancer and birth defects or other reproductive harm. For more information go to [www.P65Warnings.ca.gov](http://www.P65Warnings.ca.gov).



**OLYMPUS<sup>®</sup>**  
**LOCK**  
INC

# 100B | 200B

## N Series: Deadbolt Door & Drawer Cabinet Locks

**OPTIONAL ACCESSORIES** - See our website for a complete list of optional components.

### Internal plastic spacers

- WP20 3/16" thick plastic spacer
- WP21 3/32" thick plastic spacer
- WP22 1/4" thick plastic spacer
- WP23 1/2" thick plastic spacer

### Strikes

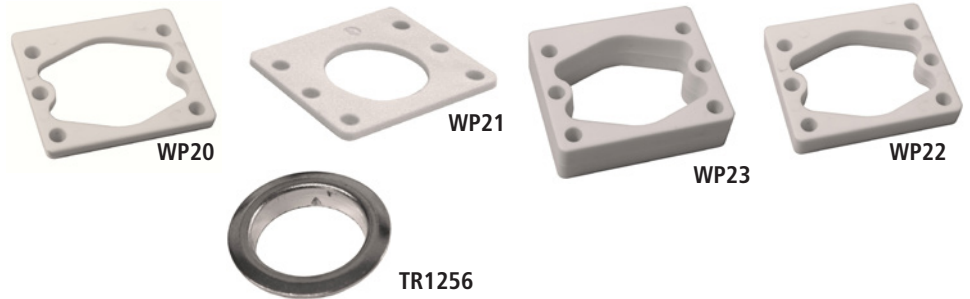
- 07S, 12-1, 12-2, 12-3, 12-4, 12-5, 56-1

### Trim Ring

- TR1256 trim ring

### Extended bolt

- 15-1-35 (see below for installed dimensions)



### Through-bolt plate

External metal 1/8" or 1/4" through-bolt plate allows for an attractive flush mounting of the cabinet lock face. Available in US3 or US26D finish.

- ETS2-125 through-bolt plate, 1/8" thick
- ETS2-250 through-bolt plate, 1/4" thick

### Through-bolt plate template

Allows for proper mounting hole placement of through-bolt plate. Can be used as a 1/8" shim spacer. Available in US3 and US26D finish.

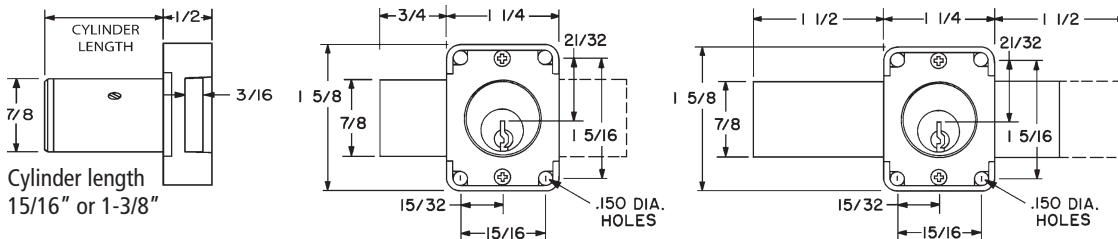
- ETST2 through-bolt plate template



U.S. Patent No. D490,686

## DIMENSIONS

### 100B Cabinet Door Lock



### 200B Drawer Lock

