

100DR | 200DW

N Series: Grade 1 Deadbolt Door & Drawer Cabinet Locks

**ANSI/BHMA Grade 1 -
E07121 | E07041
Woodwork Institute (WI)
acknowledged product**

SPECIFICATIONS

Keying: Can be keyed together with other N Series locks
Rekeyable: Easily rekeyable via set screw cylinder release mechanism
ANSI/BHMA: Passed ANSI/BHMA A156.11 Grade 1 performance requirements. Equivalent to E07121(100DR) / E07041(200DW).
Optional functions: See also our 100M/200M Series MRI locks and our 100B/200B weather resistant locks
Standard function: Key removable in locked or unlocked position. Standard function locks are non-handed.
Key-retaining: Key removable in locked position only. Specify handing (KL/KR for doors or KI/KV for drawers) when ordering.
Long bolt: Extends bolt 3/4" on both ends. Specify **-LB** option when ordering.
US Patent Nos: 4,899,563; 4,920,774
Body: Zinc die cast
Cylinder: Solid brass, pin tumbler
Cylinder length 100DR: 15/16" or 1-3/8"
Cylinder length 200DW: 15/16", 1-3/8" or 1-5/8"
Barrel diameter: 7/8"
Finish: 26D, US4, 10B or US19 (US19 not available on 100 1-3/8" or 200 1-5/8")
Packaged: Packed 10 per box

KEYING INFORMATION

Keyway: N Series (equivalent to National D4291 4-pin or D4292 5-pin system)
Keys: Includes 2 keys per lock
Stock keying: KD/KA - 4 pin standard
Stock KA#: 101, 103, 107, 915, 51001, 51002, 51003, 51004
Masterkeyed: 5-pin standard
Grand masterkeyed: Available
Keyblank 4-pin: KBN-4-NP (equivalent to NA14, 1069L)
Keyblank 5-pin: KBN-5-NP (equivalent to NA12, 1069LA)
Keyblank 5-pin copper plated: KBN-5B (use with 100M/200M MRI locks)
Keying Kit: N1

INCLUDED ACCESSORIES

100DR: 2 keys, 56-1 bar strike, and lock mounting screws
200DW: 2 keys, 12-3 angle strike, and lock mounting screws

OPTIONAL ACCESSORIES

Spacers: WP20 (3/16" thick), WP21 (3/32" thick), WP22 (1/4" thick), WP23 (1/2" thick)
Strikes: 07S, 12-1, 12-2, 12-3, 12-4, 12-5, 56-1
Trim collars: TR1256
Through-bolt hardware: ETS2 through-bolt plate, ETS2-PL trim pull and ETST2 template
Extended (long) bolt: 15-1-35 (for use with 100DR or 200DW)



56-1



With long-bolt option

100DR

Function: Cabinet door lock
ANSI/BHMA No. E07121
Barrel length: 15/16" or 1-3/8"
Long bolt: Extends overall bolt length by 1-1/2". Specify **-LB** option at time of order.



12-3

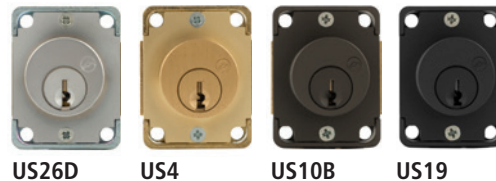


With long-bolt option

200DW

Function: Drawer lock
ANSI/BHMA No. E07041
Barrel length: 15/16", 1-3/8" or 1-5/8"
Long bolt: Specify **-LB** option at time of order.

AVAILABLE FINISHES



US26D

US4

US10B

US19

NEW

Now in flat black



WARNING: This product can expose you to chemicals including chromium, which is known to the State of California to cause cancer and birth defects or other reproductive harm. For more information go to www.P65Warnings.ca.gov.



**OLYMPUS
LOCK**

100DR | 200DW

ANSI/BHMA Grade 1
E07121 | E07041

N Series: Deadbolt Door & Drawer Cabinet Locks

OPTIONAL ACCESSORIES - See our website for a complete list of optional components.

Internal plastic spacers

- WP20 3/16" thick plastic spacer
- WP21 3/32" thick plastic spacer
- WP22 1/4" thick plastic spacer
- WP23 1/2" thick plastic spacer

Strikes

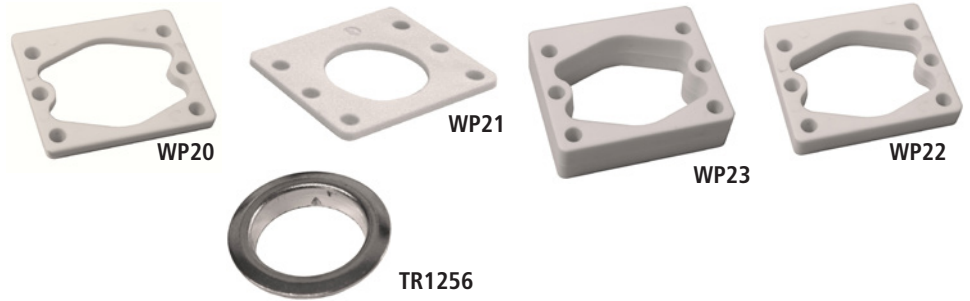
- 07S, 12-1, 12-2, 12-3, 12-4, 12-5, 56-1

Trim Ring

- TR1256 trim ring

Extended bolt

- 15-1-35 (see below for installed dimensions)



Through-bolt plate

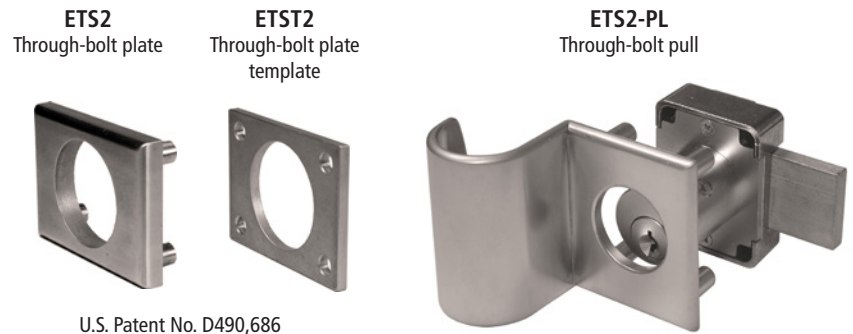
External metal 1/8" or 1/4" through-bolt plate allows for an attractive flush mounting of the cabinet lock face. Available in US3 or US26D finish.

- ETS2-125 through-bolt plate, 1/8" thick
- ETS2-250 through-bolt plate, 1/4" thick

Through-bolt plate template

Allows for proper mounting hole placement of through-bolt plate. Can be used as a 1/8" shim spacer. Available in US3 and US26D finish.

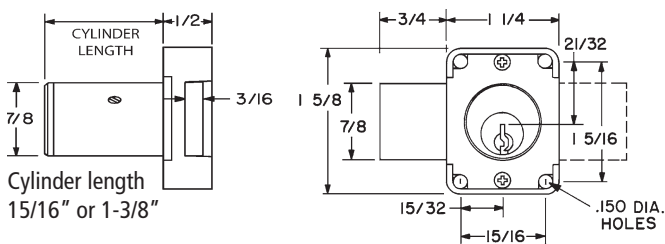
- ETST2 through-bolt plate template



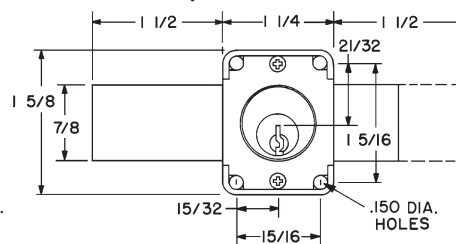
U.S. Patent No. D490,686

DIMENSIONS

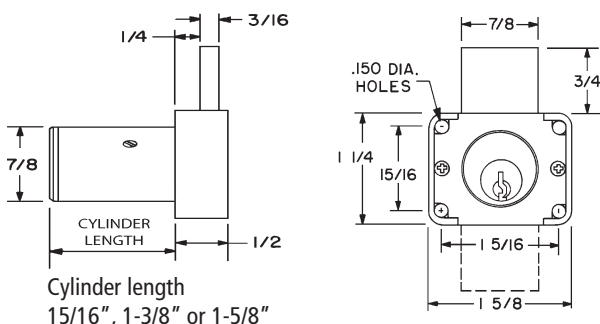
100DR Cabinet Door Lock



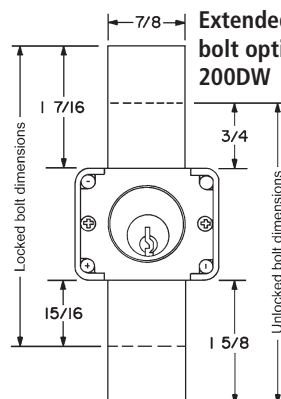
Extended (long) bolt option for 100DR



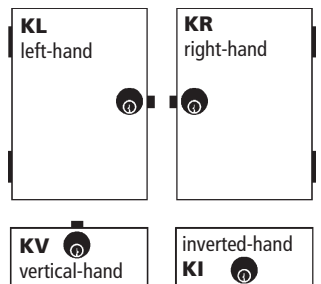
200DW Drawer Lock



Extended (long) bolt option for 200DW



Key-Retaining Handing Chart



Handing information is only required for key-retaining function. Standard function locks are non-handed.