



Stream-3s-016 Network Video Decoder

Quick Start Guide V.1.00

Table Of Contents

Getting Started

- A. Description and Features **1**
- B. Specifications **1**
- C. Rear panel Identification **2**

Device Setup

- A. Connecting to the Local Network **3**
- B. Adding IP Cameras **3**
- C. Configuring Cameras **4**

Display Tour

- A. Display Tour Setup **5**

Menu Interface

- A. Menu Walkthrough **5**

Appendices

- A. FAQ **6**

1A. Description and Features

The Stream-3s-016 is an innovative and extremely cost effective solution for the implementation of Spot monitor applications among IP and Analog Surveillance Installations. It's the perfect solution over traditional use of expensive, service intensive often bulky PC solutions or the use of limited function single input decoders. The appliance is extremely ergonomic in design and installation and configuration can be carried out quickly without any disruption. The Stream-3s-016 runs completely independent to the DVR/NVR or VMS environment and setup and maintenance is done via the local on screen interface using the supplied wireless USB mouse or the Web management Interface.

The Stream-3s-016 performance offers 8 channel ONVIF streaming with direct driver support for other camera manufacturers. It has 8 video channels with 64mb of incoming stream capacity and supports resolutions up to 5632x4224p. Compact in size and measuring only 190x155x45mm (WxDxH), the appliance can be installed discreetly behind public display monitors or above ceiling tiles. Incorporated in the Stream-3s-016 are HDMI, VGA & BNC Video Outputs allowing for connectivity to all types of monitors. This ensures for effective cost management where existing screens can be utilised when migrating from Analogue to IP technologies. The Stream-3s-016 is compatible with all IC Realtime recorders (Analog DVRs, AVS, AVRs and NVRs) and IP Cameras.

1B. Specifications

System

Operating System	Embedded LINUX
------------------	----------------

Video/Audio

Max IP Channels	16 Channel
Two-way Talk	1 Channel Input, 1 Channel Output, RCA
Audio Encode	G.711A
Audio Decoding	G.711A,G711U,G726

Display

Interface	1 HDMI, 1 VGA, 1CH BNC
Resolution	HDMI: 3840x2160, 1920x1080, 1280x1024, 1280x720 VGA: 1920x1080, 1280x1024, 1280x720
Display Split	1/4/8/9/16
Decoding Capacity	Main Stream: 1ch 8M/4ch 1080P@30FPS/ 8ch 720P@30FPS
Video Compression	H.265/H.264

Alarm

Alarm Input	8ch
Relay Output	4ch NO/NC

Network

Ethernet	1 RJ-45 Ports (10/100/1000Mbps)
Input Bandwidth	96Mbps
Output Bandwidth	40Mbps
Interoperability	Onvif S 2.0

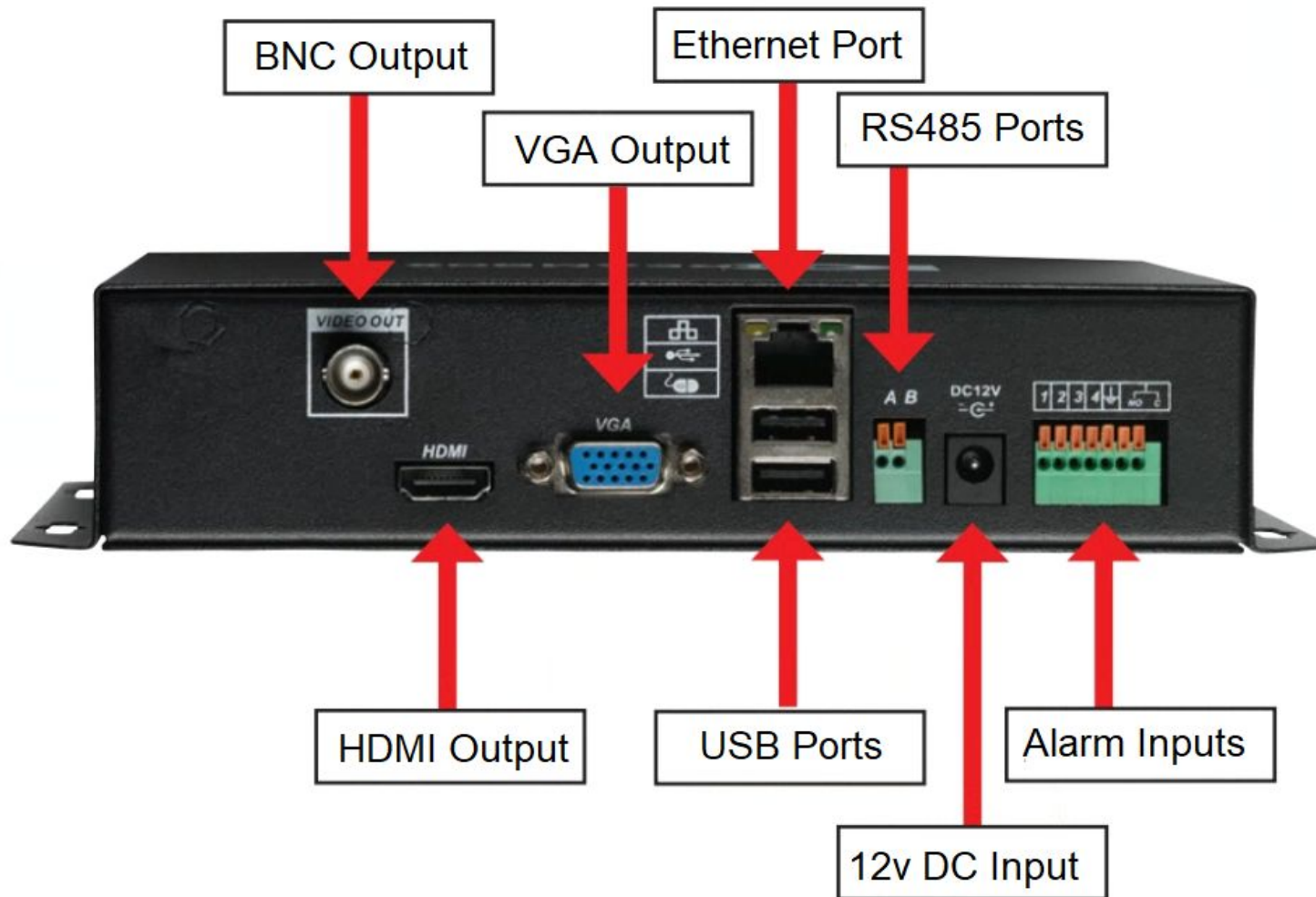
Auxiliary Interface

USB	2 USB Ports (2 USB 2.0)
RS232	N/A
RS485	1ch, Half-Duplex

General

Power Supply	DC +12V 3.3A
Power Consumption	6W
Working Environment	-10°C ~ +55°C (+14°F ~ +131°F) 10-90% humidity
Dimensions (WxDxH)	215mm x 160mm x 45mm (8.4" x 6.3" x 1.8")
Weight	.9kg (1.99 lb)

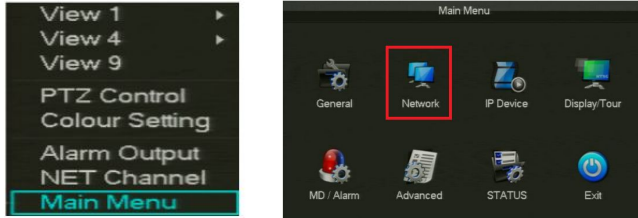
1C. Rear Panel Identification



2A. Connecting to the local network

Prior to the Setup: Ensure that the Stream-3S-016 has network connection using an ethernet cable to the router/ local network. Plug in a mouse and monitor to access the local GUI.

- Right click on the mouse and select **Main Menu**
- Select **Network**:

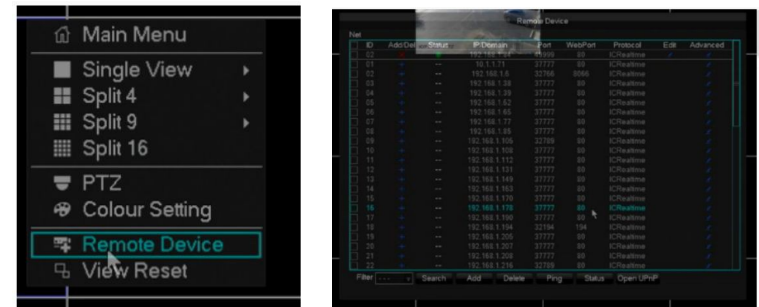


- Under the **Base** tab, select the check box for **DHCP**. Click **Apply** then **OK** when finished.
- You may un-check **DHCP** once the unit acquires a new IP address. YOU may have to reboot the device while on DHCP mode to acquire a new IP from the local network.

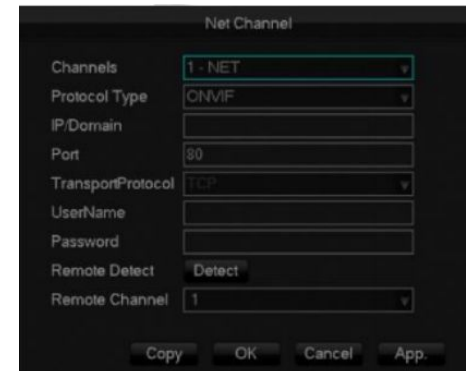


2B. Adding IP cameras/ devices

- Right click on the mouse and select **Remote Device**
- The top table indicates cameras already connected to the Stream-3s-016. Clicking “**Search**” will do a network scan for IC Realtime/ Clearview/ ONVIF devices available to add. Select on a device and click “**Add**” to connect a device to the Stream-3s-016.



- Clicking “**Add**” without selecting a device allows you to manual input the information such as the IP address, Protocol Type and login credentials.



2C Configuring Cameras (IP Device)

1.1 - Basic

- The Basic Section will enable you to change channel name and modify overlays.



1.2 - Encoding

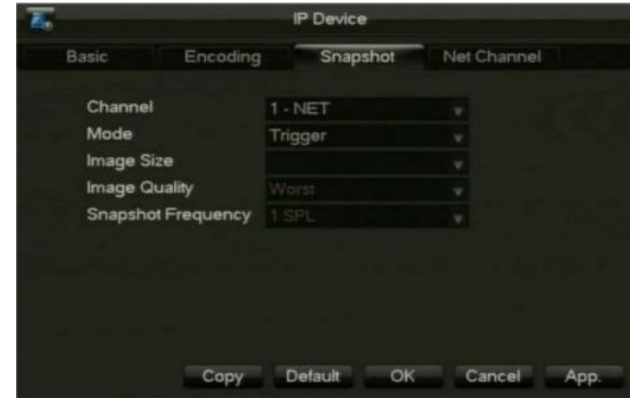
- The Encoding Section allows you to configure Video quality such as Resolution, Frame rate and bitrate between the Main and Sub/ Extra Streams.



Configuring Cameras (IP Device) (cont.)

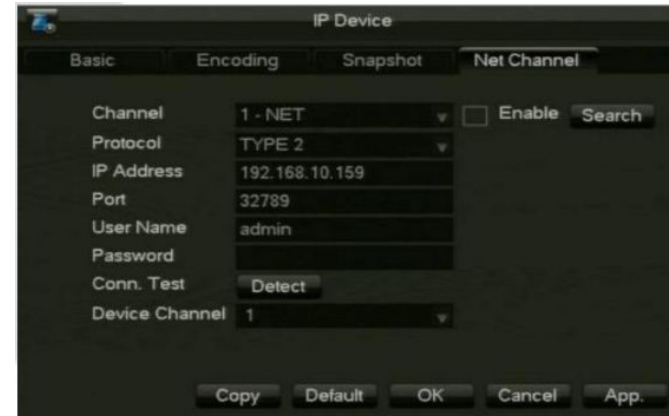
1.3 - Snapshot

- Snapshot Section allows configuration of snapshot properties.



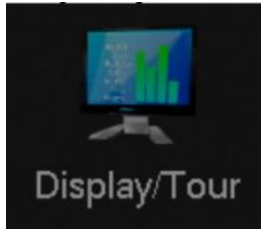
1.4 - Net Channel

- Net Channel enables changes to connection properties from the IP devices.

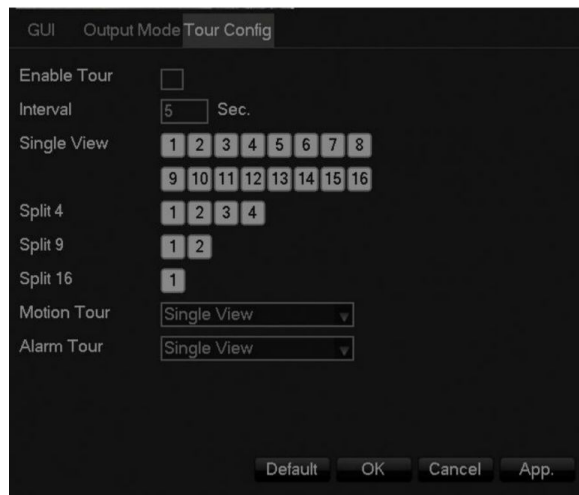


3A: Display Tour Setup:

- Right Click and click Main Menu and then Select “Display/Tour.”



- Select “**Tour Config**”. You can select which cameras will appear in the Single to Split view. The Tour will display any groups in the split views that are highlighted.
- You can also Setup Tour based on Motion Detect or Alarm Triggers under the “**Motion Tour**” and “**Alarm Tour**.”



4A. MENU WALKTHROUGH:

- I. **General:** This section controls the Date/ Time settings as well language options and Auto logout.
 - A. **Note:** To prevent users from automatically logging out after a certain time, set the Autologout to "0"
- II. **Network:** This area controls the Network functions.
 - A. **Base:** IP address information and configuration
 - B. **Advanced:** Port, RTSP UpNp management and configuration
- III. **IP Device:** This section is explained in an earlier in Section 2C. This is for adding/ removing cameras to the unit.
- IV. **Display/ Tour:**
 - A. **GUI:** Configures Transparency and Time Display toggle.
 - B. **Output Mode:** Configures Output, Resolution and color settings
 - C. **Tour Config:** For setting up tour mode
- V. **MD/ Alarm:**
 - A. **Detect:** Configures motion detect and triggers
 - B. **Alarm Input:** For configuring Alarm input settings and triggers.
 - C. **Alarm Out:** Enables Alarm output function
- VI. **Advanced:**
 - A. **Account Manage:** Local account configuration
 - B. **PTZ:** For setting up PTZ control parameters.
 - C. **System:** Search system logs, see device info, Default and Auto Reboot.
 - D. **Exception:** For configuring event abnormalities
 - E. **RS232:** For configuring RS232 connections
- VII. **Status:**
 - A. **BPS:** Network traffic information
 - B. **Online User:** Displays the current logged in users for the Stream Box.

5A. FAQ

What is the default login?	The default username is: admin and password is: admin
The Stream-3s-016 does not find any devices on Remote Device Search	Make sure to set the Stream-3s-016 to DHCP in the Network settings. The Stream-3s-016 will need to be on the same local network as the IP cameras/ NVR/ DVR.
Can I set up the machine without a display connected?	Yes. You can access the machine's configuration page from a computer by typing its IP address into a web browser.
I can not login through the web browser	IC Realtime Stream boxes that are not HTML5 compatible have to use Internet Explorer to initialize the plugin. If you're already using Internet Explorer, reinstall the plugin by deleting the "webrec" and "webplugin.exe" folders within C:\Program Files and/or C:\Program Files (x86)
Added cameras won't connect/ show image	Ensure you have the proper IP address, port numbers (TCP if IC Realtime, HTTP, RTSp for ONVIF) and login credentials properly input in Remote Device section. Make sure the cameras are set to H.264 or H.265. MJPEG is not supported.
I need more in-depth help regarding configuration	IC Realtime has a Help Center that covers a variety of topics: https://icrealtime.zendesk.com/hc/en-us

