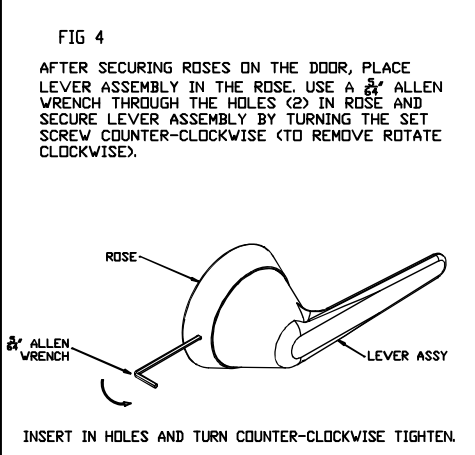
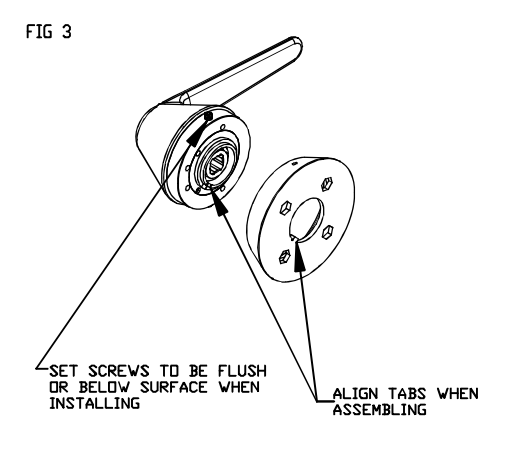
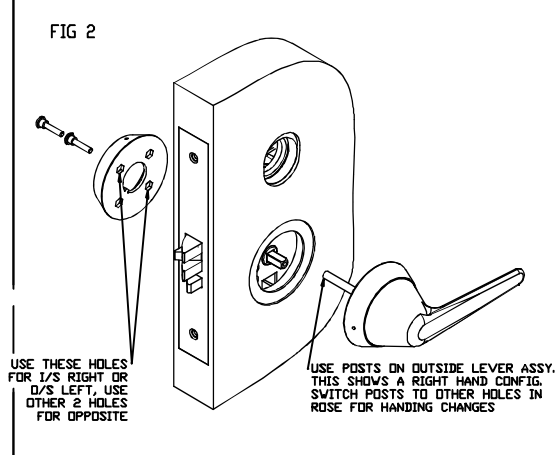


MRXL SECTIONAL INSTALLATION GUIDE

1. PREPARE DOOR CUTOUT PER TEMPLATE.
 2. INSTALL MORTISE INTO THE PREPARED DOOR (SEE MORTISE INSTRUCTIONS FOR HANDING & CLUTCHING INSTRUCTIONS).
 3. INSTALL SPINDLES IN MORTISE PER FIG 1 & EXPLODED VIEW. NOTE: DRIVER PIN IS ON THE NON-LOCKING SIDE (USUALLY INSIDE).
 4. SLIDE THE SPRING CAGE ON THE OUTSIDE SPINDLE (SEE FIG 5). SLIDE OUTSIDE LEVER ASSEMBLY ONTO THE MORTISE WITH POSTS GOING THROUGH THE MORTISE THROUGH HOLES AND LINED UP WITH THE SPRING CAGE LEGS. SEE FIG 2 & FIG. 5.
 5. ON THE OPPOSITE SIDE- PUT THE 2 MOUNTING SCREWS THROUGH HOLES ON THE ROSE- SEE FIG 2. ALIGN THE SCREWS WITH THE POSTS AND TIGHTEN.
 6. INSTALL THE INSIDE LEVER ASSEMBLY INTO THE ROSE- ALIGN TABS. SET SCREWS HAVE TO BE FLUSH OR BELOW THE SURFACE TO ALLOW CLEARANCE. SEE FIG 3.
- NOTE: ONCE THE LEVER ASSEMBLY IS SET ON BOTH SIDES- ROTATE THE LEVER ON BOTH SIDES TO ENSURE THE MORTISE LATCH RETRACTS AND THERE IS NO BINDING. IF THE LATCH OR LEVER BINDS REMOVE THE LEVER ASSEMBLY FROM THE MOUNTING SCREW SIDE AND LOOSEN THE MOUNTING SCREWS AND ALIGN THE ROSE WITH THE CENTER OF THE HUBS AS MUCH AS POSSIBLE UNTIL NO BINDING OCCURS. TIGHTEN THE SCREWS AND RETRY.
7. INSERT THE ALLEN WRENCH THROUGH EACH HOLE (2 IN EACH ROSE) TO ENGAGE THE SET SCREW AND SECURE THE LEVER ASSEMBLY. ROTATE COUNTERCLOCKWISE TO TIGHTEN IN THE ASSEMBLY AND ROTATE CLOCKWISE TO LOOSEN. SEE FIG 4.
 8. INSTALL CYLINDER (COLLAR, WAVE WASHER, CYLINDER) AND SECURE WITH SET SCREW (UNDER MORTISE FACE PLATE).
 9. IMPORTANT! CHECK LOCK FOR CORRECT OPERATION BEFORE CLOSING THE DOOR.
 10. LEVER HANDING- CHANGE MOUNTING POST POSITION TO CHANGE HANDING - SEE FIG 2 FOR RH. SEE MORTISE HANDING CHANGE INSTRUCTIONS TO CHANGE MORTISE HANDING. NOTE: DRIVER PIN IN ON NON-LOCKING SIDE (SEE EXPLODED VIEW).

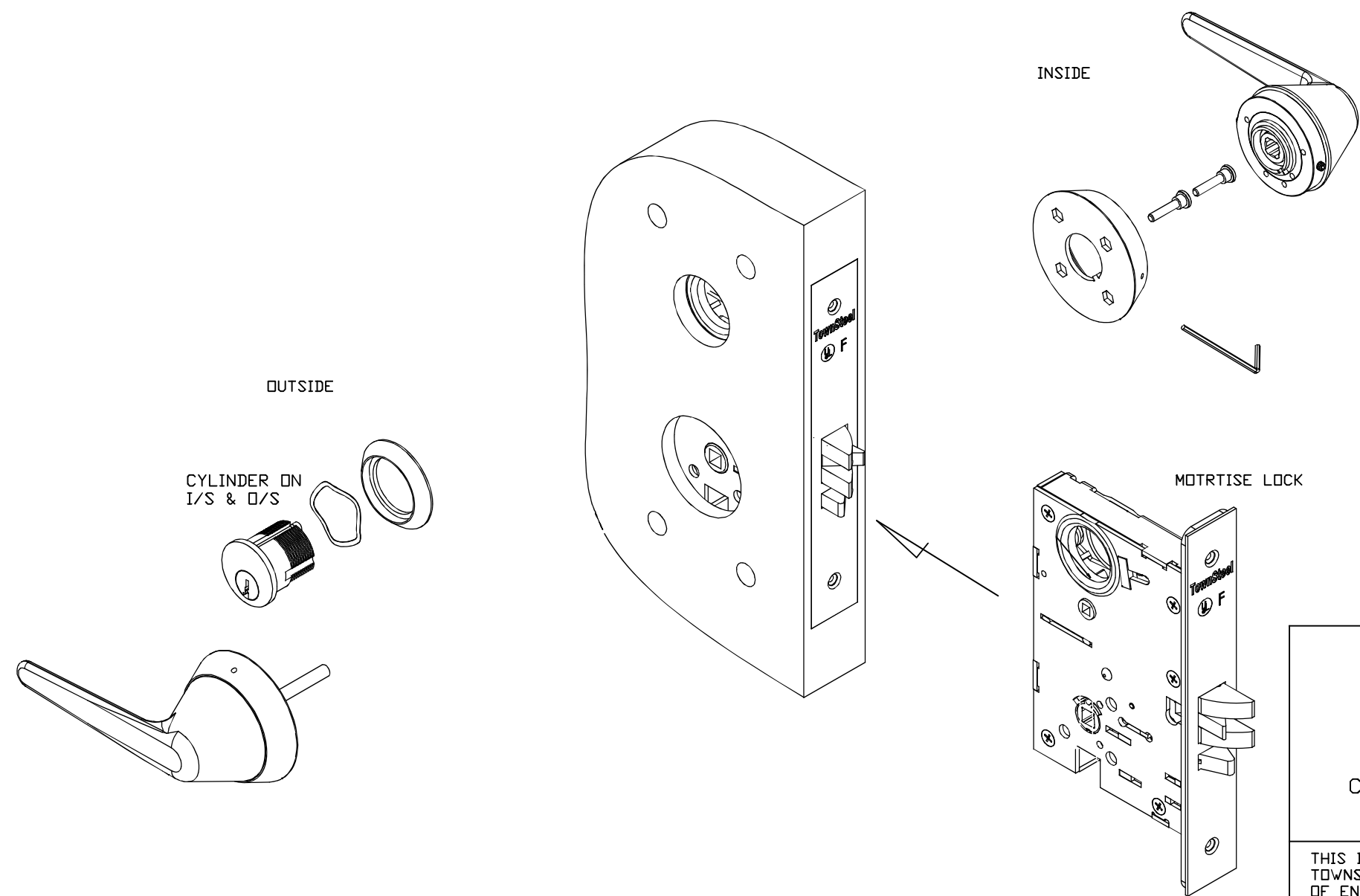
<p>TownSteel</p> <p>17901 RAILROAD STREET CITY OF INDUSTRY, CA 91748</p>	DRAFT UNLESS OTHERWISE SPECIFIED: 1" MAX	B	TOLERANCES UNLESS OTHERWISE SPECIFIED: X.X (METRIC) = ±0.4 X.XX (METRIC) = ±0.15 FRACTIONS = ±.8 ANGLES = ±1/2° ∅ .12 MACHINED SURFACES 125/	MATERIAL: NOTED
	DRAWN BY: SC			HEAT TREAT: NA
	DATE: 10/23/15		THIRD ANGLE	FINISH: NA TITLE: MRXL SECTIONAL ASSY INSTRUCTIONS PART#: MRXL-S

THIS DRAWING AND THE INFORMATION CONTAINED THEREON OR DERIVED THEREFROM ARE THE CONFIDENTIAL PROPERTY OF TOWNSTEEL, INC. IT IS NOT TO BE REPRODUCED, OR DISCLOSED TO OTHERS, AND MAY BE USED ONLY FOR THE PURPOSE OF ENABLING THE PARTY TO WHOM IT HAS BEEN LOANED TO QUOTE ON OR FILL AN ORDER FOR TOWNSTEEL, INC., OR AS MAY BE OTHERWISE AUTHORIZED BY TOWNSTEEL, INC. IN WRITING.



REV	DESCRIPTION	DATE								
	MRXL-SEC-30 LOCK PARTS LIST									
	SCREW PACK BAG 1									
		<table border="1"> <tr> <td>INSIDE MOUNTING POST (2 ea)</td> <td>1</td> </tr> <tr> <td>OUTSIDE MOUNTING SCREW (2 ea)</td> <td></td> </tr> <tr> <td>ESCUTCHEON MOUNTING SCREW (4 ea)</td> <td></td> </tr> <tr> <td>5/64 ALLEN WRENCH (1 ea)</td> <td></td> </tr> </table>	INSIDE MOUNTING POST (2 ea)	1	OUTSIDE MOUNTING SCREW (2 ea)		ESCUTCHEON MOUNTING SCREW (4 ea)		5/64 ALLEN WRENCH (1 ea)	
INSIDE MOUNTING POST (2 ea)	1									
OUTSIDE MOUNTING SCREW (2 ea)										
ESCUTCHEON MOUNTING SCREW (4 ea)										
5/64 ALLEN WRENCH (1 ea)										
	<p>LEVER ASSEMBLY (OUTSIDE)</p>	<p>LEVER ASSEMBLY (INSIDE)</p>								
	<p>ROSE (1 ea)</p>	<p>CYLINDER (2x)</p>								
	<p>WAVE WASHER & CYLINDER COLLAR (2 ea)</p>									

EXPLODED VIEW (LEFT HAND SHOWN)



MRXL ESCUTCHEON INSTALLATION GUIDE FOR TOWNSTEEL MORTISES F-30

1. PREPARE DOOR CUTOUT PER TEMPLATE.
- INSTALL MORTISE INTO THE PREPARED DOOR (SEE MORTISE INSTRUCTIONS FOR HANDING & CLUTCHING INSTRUCTIONS).
- SLIDE OUTSIDE LEVER ASSEMBLY ONTO THE MORTISE WITH POSTS GOING THROUGH THE MORTISE THROUGH HOLES. SEE FIG 2.
- ON THE OPPOSITE SIDE- PUT THE 2 MOUNTING SCREWS THROUGH HOLES ON THE ROSE- SEE FIG 2. ALIGN THE SCREWS WITH THE POSTS AND TIGHTEN.
- INSTALL THE INSIDE LEVER ASSEMBLY INTO THE ROSE- ALIGN TABS. SET SCREWS HAVE TO BE FLUSH OR BELOW THE SURFACE TO ALLOW CLEARANCE. SEE FIG 3.
- INSERT THE ALLEN WRENCH THROUGH EACH HOLE (2 IN EACH ROSE) TO ENGAGE THE SET SCREW AND SECURE THE LEVER ASSEMBLY. ROTATE COUNTERCLOCKWISE TO TIGHTEN IN THE ASSEMBLY AND ROTATE CLOCKWISE TO LOOSEN. SEE FIG 4.
- INSTALL CYLINDERS (COLLAR, WAVE WASHER, CYLINDER) AND SECURE WITH SET SCREW (UNDER MORTISE FACE PLATE).
- IMPORTANT: CHECK LOCK FOR CORRECT OPERATION BEFORE CLOSING THE DOOR.**
- LEVER HANDING- CHANGE MOUNTING POST POSITION TO CHANGE HANDING - SEE FIG 2 FOR RH. SEE MORTISE HANDING CHANGE INSTRUCTIONS TO CHANGE MORTISE HANDING. NOTE: DRIVER PIN IN ON NON-LOCKING SIDE (SEE EXPLODED VIEW).

<h1>TownSteel</h1> <p>17901 RAILROAD STREET CITY OF INDUSTRY, CA 91748</p>	DRAFT UNLESS OTHERWISE SPECIFIED: 1" MAX	<table border="1"> <tr> <td>B</td> <td>TOLERANCES UNLESS OTHERWISE SPECIFIED:</td> </tr> <tr> <td></td> <td>X.X (METRIC) = ±0.4</td> </tr> <tr> <td></td> <td>X.XX (METRIC) = ±0.15</td> </tr> <tr> <td></td> <td>FRACTIONS = ±.8</td> </tr> <tr> <td></td> <td>ANGLES = ±1/2°</td> </tr> <tr> <td></td> <td>⊙ .12</td> </tr> <tr> <td></td> <td>MACHINED SURFACES 125/</td> </tr> <tr> <td></td> <td>⊕ THIRD ANGLE</td> </tr> </table>	B	TOLERANCES UNLESS OTHERWISE SPECIFIED:		X.X (METRIC) = ±0.4		X.XX (METRIC) = ±0.15		FRACTIONS = ±.8		ANGLES = ±1/2°		⊙ .12		MACHINED SURFACES 125/		⊕ THIRD ANGLE	MATERIAL: NOTED
	B		TOLERANCES UNLESS OTHERWISE SPECIFIED:																
		X.X (METRIC) = ±0.4																	
	X.XX (METRIC) = ±0.15																		
	FRACTIONS = ±.8																		
	ANGLES = ±1/2°																		
	⊙ .12																		
	MACHINED SURFACES 125/																		
	⊕ THIRD ANGLE																		
DRAWN BY: SC	DATE: 2/10/16	HEAT TREAT: NA																	
		FINISH: 32D																	
		TITLE: MRXL SECTIONAL ASSY INSTRUCTIONS, F30																	
		PART#: MRXL-SEC-30																	

THIS DRAWING AND THE INFORMATION CONTAINED THEREON OR DERIVED THEREFROM ARE THE CONFIDENTIAL PROPERTY OF TOWNSTEEL, INC. IT IS NOT TO BE REPRODUCED, OR DISCLOSED TO OTHERS, AND MAY BE USED ONLY FOR THE PURPOSE OF ENABLING THE PARTY TO WHOM IT HAS BEEN LOANED TO QUOTE ON OR FILL AN ORDER FOR TOWNSTEEL, INC., OR AS MAY BE OTHERWISE AUTHORIZED BY TOWNSTEEL, INC. IN WRITING.