

# Door Controller with Module

Control 4 doors via RFID card access and managed by the easy-to-use Malibu access control module.

The "Module" (Malibu access control module) is the device that powers the entire card access system. The Module has an intuitive UI that makes it very easy to configure and use the card access system. Administration can be done locally or remotely.

Additional modules can be stacked to provide other business systems such as Point of Sale, Food & Beverage, Accounting, Time and Attendance, and much more.

**\*\*Back up battery not included\*\***

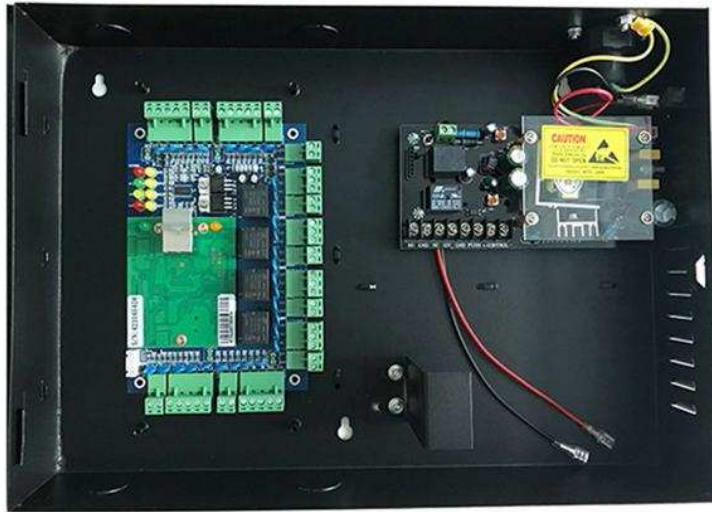
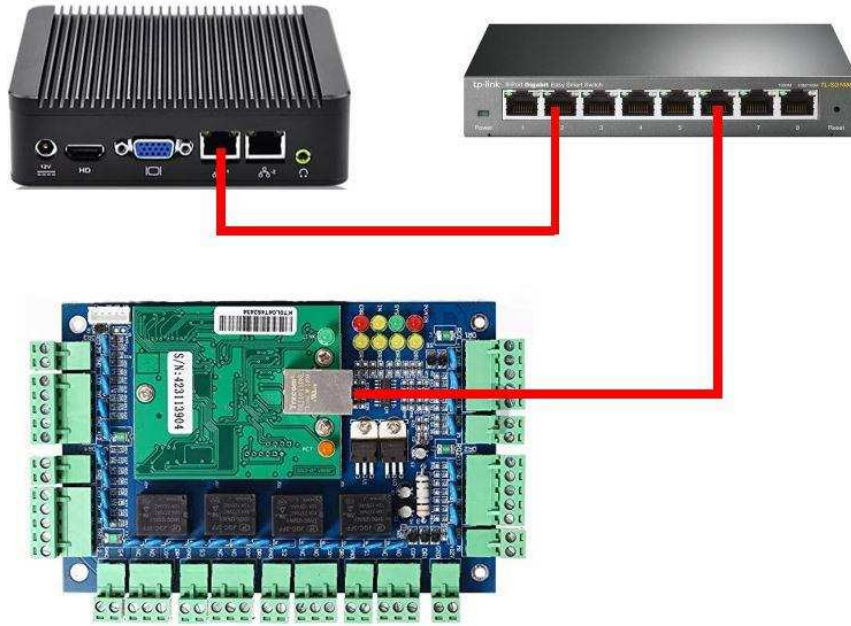
## Features:

- PCB board size: 160 x106 mm (6.3 x 4.17 in)
- Case size: 273 x 228 x 65 mm (10.75 x 8.98 x 2.56 in)
- Power Supply: 12V DC 4-7A
- Power Consumption of Circuit Board: < 100mA
- Doors Controlled: 4 doors
- Door opening time extending setting: 1-600 seconds (adjustable)
- Operation Temperature: -40°C~70°C (-40°F~158°F)
- Operation Humidity: 10-90 % RH, No Condensation
- Quantity of users: 20,000
- Quantity of Event Buffers(offline): 100,000 event buffers
- Power interruption protection measure: High Speed Memory, Records never lost
- Max Distance from Reader to Controller: 100m or 328ft (suggested distance 80m or 262 ft)
- Max Distance between Controllers: TCP/IP: Depends on net coverage area
- Alarm for door open for extended time, illegal break in, intimidate
- Unlock based on internal and external validation

## **Power supply 220V or 110V 5A**

### Features:

- AC Input Voltage: 220V/110V 50Hz
- Output Voltage: 12V
- Output Electric Current: 5A
- Output Power: 60W
- Operating Temperature: -20°C ~ +60°C
- Operating Humidity: 90%



4 Door