

Door Controller Extension

Control 4 doors via RFID card access and managed by the easy-to-use Malibu access control module.

Note: Must have the 4 Door Controller with Module (MAC-004-CM) to use this extension. The 4 Door Controller with Module controls the first 4 doors and this extension allows you to add 4 additional doors either in the same or different location. (Additional multiples of 4 doors require an extension for each set.) If 5-7 doors need additional access control or non-multiples of 4, add one extension per door with (MAC-001-CE) or two extensions with (MAC-002-CE)

****Back up battery not included****

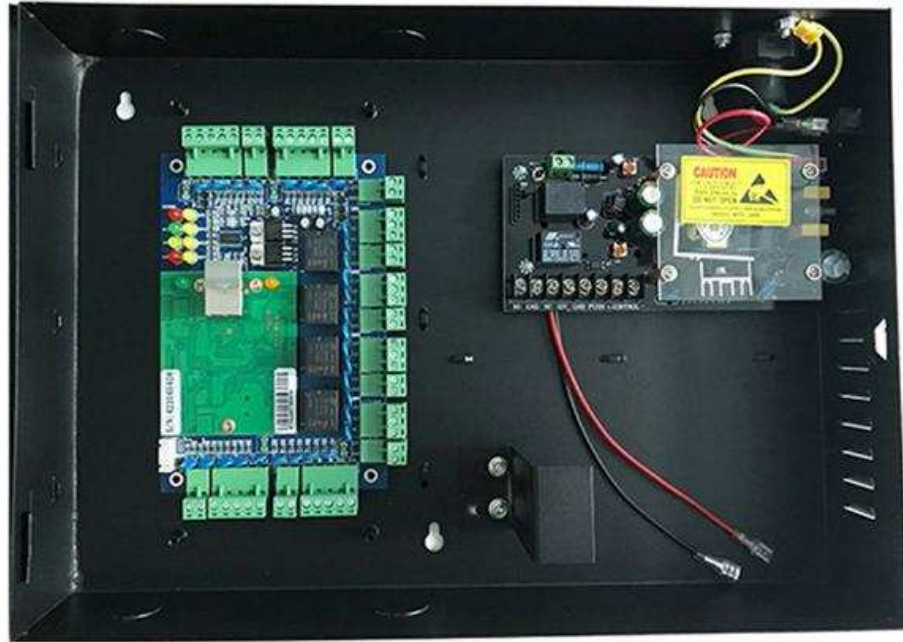
Features:

- PCB board size: 160 x106 mm (6.3 x 4.17 in)
- Case size: 273 x 228 x 65 mm (10.75 x 8.98 x 2.56 in)
- Power Supply: 12V DC 4-7A
- Power Consumption of Circuit Board: < 100mA
- Doors Controlled: 8 doors with MAC-004-CM
- Door opening time extending setting: 1-600 seconds (adjustable)
- Operation Temperature: -40°C~70°C (-40°F~158°F)
- Operation Humidity: 10-90 % RH, No Condensation
- Quantity of users: 20,000
- Quantity of Event Buffers(offline): 100,000 event buffers
- Power interruption protection measure: High Speed Memory, Records never lost
- Max Distance from Reader to Controller: 100m or 328ft (suggested distance 80m or 262 ft)
- Max Distance between Controllers: TCP/IP: Depends on net coverage area
- Alarm for door open for extended time, illegal break in, intimidate
- Unlock based on internal and external validation

Power supply 220V or 110V 5A

Features:

- AC Input Voltage: 220V/110V 50Hz
- Output Voltage: 12V
- Output Electric Current: 5A
- Output Power: 60W
- Operating Temperature: -20°C ~ +60°C
- Operating Humidity: 90%



4 Door