

KR55 KeyMaker Plus

by MBE



** First in the World key programmer for both transponder and remote*

** Works for adding the key and in “all keys lost” situation*

v. 11.2020

UHS
HARDWARE

Works for:



2007-2018
Dodge Sprinter W(C)906



2003-2008
Chrysler Crossfire



1996-2004
Mercedes SLK Class R170
(all types)



Jun 1, 1997-2001
Mercedes SL Class R129



Jun 1, 1997-1999
Mercedes S-Class W140



Jun 1, 1997-2001
Mercedes G-Class W461



1997-2005
Mercedes A-Class W168



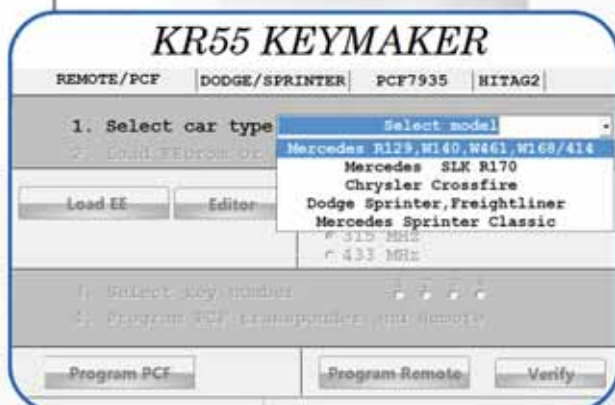
2001-2005
Mercedes Vaneo W414

* Works only with new remote keys manufactured by MBE
(one exception - OEM refurbished key can be used for W163).

1. Adding the key

You must have at least one working remote for the vehicle.
Removal of SKREEM module in this case is not required.

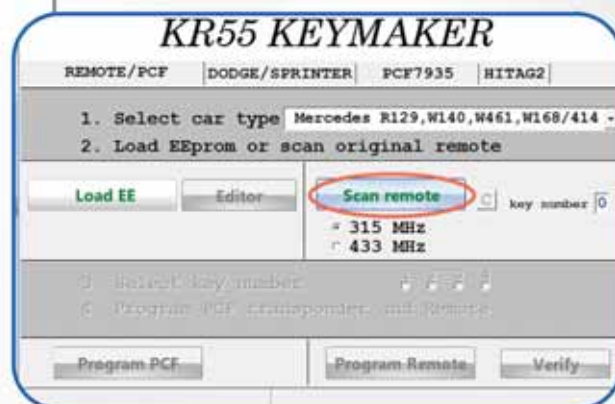
All steps must be completed in order, no steps can be skipped/alterd. Please read carefully.



1. Start KR55 KeyMaker software.

2. Select "PCF/REMOTE" tab.

3. Choose model of the vehicle and frequency of the key. Usually for US and Asian market it's 315 MHz, for the rest of the World - 433 Mhz. After choosing of vehicle type, Keymaker will confirm your choice by voice.



4. Click "Scan remote" button.



5. Hold the original working remote near Keymaker's programming slot and press "Lock" or "Unlock" button on remote. Original key number will be displayed and selection field will become active. Select one of the available key slots.

KR55 KEYMAKER

REMOTE/PCF	DODGE/SPRINTER	PCF7935	HITAG2
1. Select car type Mercedes R129,W140,W461,W168/414			
2. Load EEprom or scan original remote			
Load EE	Editor	Scan remote	key number 2
		315 MHz	CLOSE BUTTON
		433 MHz	
3. Select key number 1 2 3 4			
4. Program PCF transponder and Remote			
Program PCF	Program Remote	Verify	
SCANNED CORRECTLY			



KR55 KEYMAKER

REMOTE/PCF	DODGE/SPRINTER	PCF7935	HITAG2
1. Select car type Mercedes R129,W140,W461,W168/414			
2. Load EEprom or scan original remote			
Load EE	Editor	Scan remote	key number 2
		315 MHz	CLOSE BUTTON
		433 MHz	
3. Select key number 1 2 3 4			
4. Program PCF transponder and Remote			
Program PCF	Program Remote	Verify	
Reading			

KR55 KEYMAKER

REMOTE/PCF	DODGE/SPRINTER	PCF7935	HITAG2
1. Select car type Mercedes R129,W140,W461,W168/414			
2. Load EEprom or scan original remote			
Load EE	Editor	Scan remote	key number 2
		315 MHz	CLOSE BUTTON
		433 MHz	
3. Select key number 1 2 3 4			
4. Program PCF transponder and Remote			
Program PCF	Program Remote	Verify	
Key # 2			

6. Click "PROGRAM REMOTE" button.
7. Put a new remote in KeyMaker's programming coil as shown.
8. Press and hold "Unlock" button on the new remote until you will hear confirmation sound. Blue light will flash and message "OK, please click verify button" will appear.
9. Click "VERIFY" button. Now press any button on the new fob. "OK" message and sound will confirm successful programming.
10. **Transponder programming.** Put key with already programmed remote in Keymaker's programming coil. Click "PCF PROGRAM" button. "OK" message and "start" sound will confirm successful transponder programming.
11. Cut the key blade.
12. Now go to the vehicle with new key. If key was correctly programmed, vehicle should start. Turn ignition off, pull key out. Quickly press any button on the remote 5-6 times. Insert key in ignition, turn ignition on (do not start). Quick press any button on the remote few times (5-6 times). Turn ignition off, pull the key out. Remote should start working. Check all functions of the key. Programming is complete.

2. All remotes are lost or no working remote available

In this case SKREEM module removal is required. EEprom memory must be read and saved on the computer.

We recommend Orange5, Smok (MBprog) or Carprog programmer with special Click'n Go adapter (corresponding to your SKREEM module model).

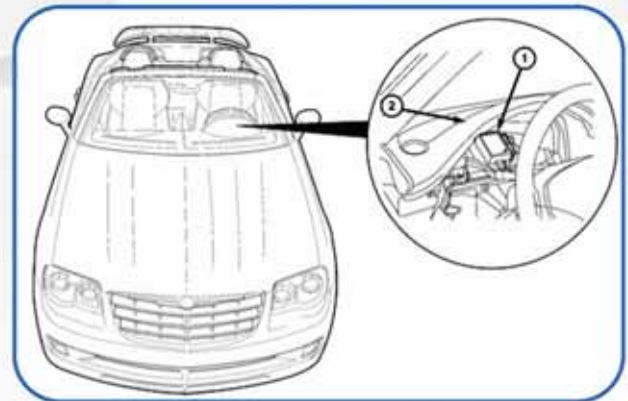
In this case no desoldering required, memory safely can be read.

Of course, you can use another EEprom programmers at your own risk.

All steps must be completed in order, no steps can be skipped/altered. Please read carefully.



SKREEM adapter with CarProg



SKREEM location



1. According to EEprom programmer manual, read and save EEprom to your computer.
2. Start KR55 Keymaker software.
3. Select your vehicle.
4. Select "PCF/REMOTE" tab.
5. Click "Load EE" button. Select SKREEM EEprom file you saved on step 1.
6. Check if your vehicle's model is properly displayed in the left lower corner of Keymaker's window.

If model is incorrect - EEprom wasn't read properly. Read and save EEprom again using Orange5, Smok (MBprog) or Carprog with proper Click'n Go adapter and start again from step 2.

Mercedes R129, W140, W461, W168, W414

KR55 KEYMAKER

REMOTE/PCF | DODGE/SPRINTER | PCF7935 | HITAG2

1. Select car type Mercedes R129,W140,W461,W168/414 -
2. Load EEprom or scan original remote

Load EE | Editor | Scan-remote | key number 2
315 MHz
433 MHz

3. Select key number 1 2 3 4
4. Program PCF transponder and Remote

Program PCF | Program Remote | Verify

Mercedes W168, R129, W414



KR55 KEYMAKER

REMOTE/PCF | DODGE/SPRINTER | PCF7935 | HITAG2

1. Select car type Mercedes R129,W140,W461,W168/414 -
2. Load EEprom or scan original remote

Load EE | Editor | Scan-remote | key number 2
315 MHz
433 MHz

3. Select key number 1 2 3 4
4. Program PCF transponder and Remote

Program PCF | Program Remote | Verify

Reading

KR55 KEYMAKER

REMOTE/PCF | DODGE/SPRINTER | PCF7935 | HITAG2

1. Select car type Mercedes R129,W140,W461,W168/414 -
2. Load EEprom or scan original remote

Load EE | Editor | Scan-remote | key number 2
315 MHz
433 MHz

3. Select key number 1 2 3 4
4. Program PCF transponder and Remote

Program PCF | Program Remote | Verify

Key # 2

7. If vehicle's model displayed correctly, select one of the available key slots.
8. Put a new remote in KeyMaker's programming coil as shown.
9. Click "**PROGRAM REMOTE**" button.
10. Press and hold "Unlock" button on the new remote until you will hear confirmation sound. Blue light will flash and message "OK, please click verify button" will appear.
11. Click "**VERIFY**" button. Now press any button on the new fob. "OK" message and sound will confirm successful programming.
12. Transponder programming. Put key with already programmed remote in Keymaker's programming coil. Click "**PCF PROGRAM**" button. "OK" message and "start" sound will confirm successful transponder programming.
13. Cut the key blade.
14. Now go to the vehicle with new key. If key was correctly programmed, vehicle should start. Turn ignition off, pull key out. Quickly press any button on the remote 5-6 times. Insert key in ignition, turn ignition on (do not start). Quick press any button on the remote few times (5-6 times). Turn ignition off, pull the key out. Remote should start working. Check all functions of the key. Programming is complete.

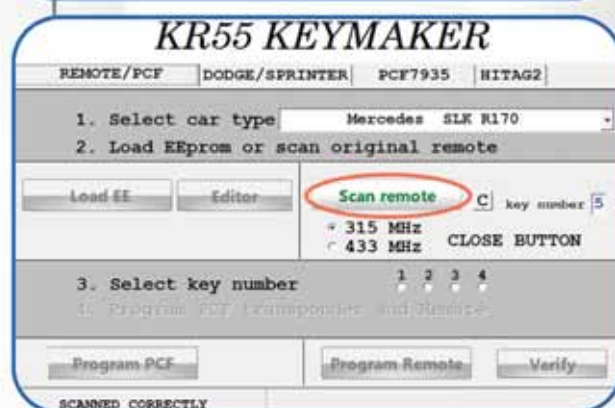
1. Adding the key

You must have at least one working remote for the vehicle. Removal of SKREEM module in this case is not required.

All steps must be completed in order, no steps can be skipped/alterd. Please read carefully.



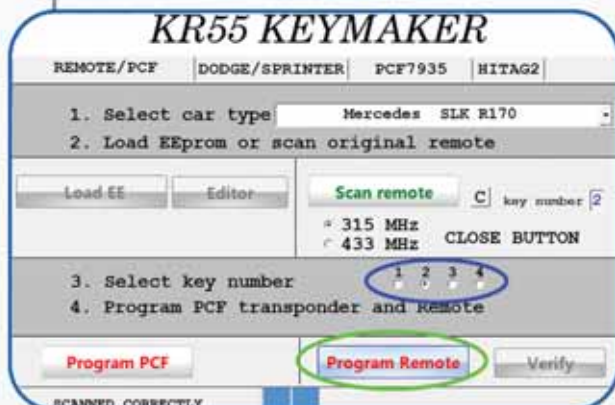
1. Start KR55 KeyMaker software.
2. Select "PCF/REMOTE" tab.
3. Choose model of the vehicle and frequency of the key. Usually for US and Asian market it's 315 MHz, for the rest of the World - 433 Mhz. After choosing of vehicle type, Keymaker will confirm your choice by voice.



4. Click "Scan remote" button.



5. Hold the original working remote near Keymaker and press "Unlock" button on remote. Original key number will be displayed and selection field will become active. Select one of the available key slots.
6. Click "PROGRAM REMOTE" button.
7. Put a new remote in KeyMaker's programming coil as shown.
8. Press and hold "Unlock" button on the new remote until you will hear confirmation sound. Blue light will flash and message "OK, please click verify button" will appear.

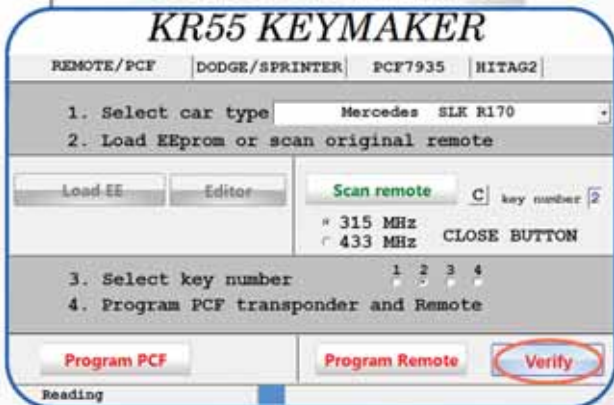


Mercedes SLK R170



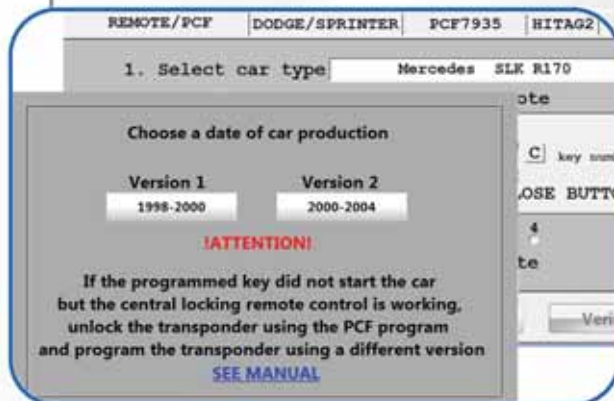
9. Click "**VERIFY**" button. Now press any button on the new fob. "OK" message and sound will confirm successful programming.

10. Transponder programming. Put key with already programmed remote in Keymaker's programming coil. Click "**PCF PROGRAM**" button. Please read message which will appear and choose one of the versions which you think is correct. If programmed key will not start the car you will correct it later. "OK" message and "start" sound will confirm successful transponder programming.

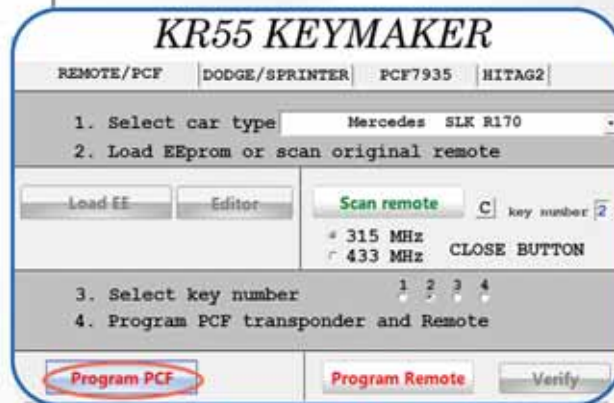
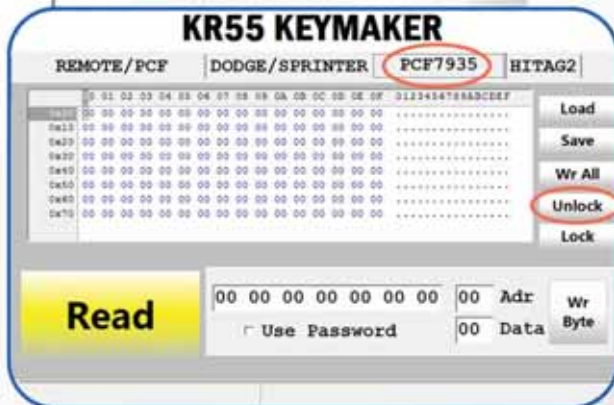
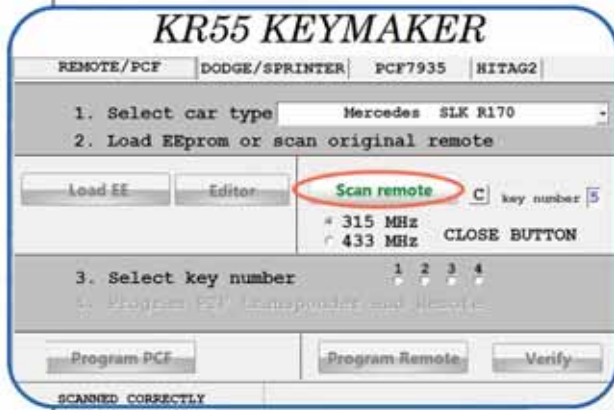


11. Cut the key blade.

12. Now go to the vehicle with new key. If key was correctly programmed and version is correct, vehicle should start. If car doesn't start - go to step 13. If car starts - turn ignition off, pull key out. Quickly press any button on the remote 5-6 times. Insert key in ignition, turn ignition on (do not start). Quickly press any button on the remote few times (5-6 times). Turn ignition off, pull the key out. Remote should start working. Check all functions of the key. Programming is complete.



Mercedes SLK R170



13. Transponder unlocking.
If you chose incorrect PCF version, transponder should be unlocked and then programmed again.

On "PCF/REMOTE" tab of Keymaker click "Scan Remote" button. Click any button on the remote. Key number will be displayed and selection field will become active.

14. Insert key in Keymaker's programming coil.

15. Click "PCF7935" tab and click "Unlock" button on this tab.

16. Within 10 seconds you will see "OK" message. Transponder is successfully unlocked.
Now return to step 10 and select different version for transponder programming.

2. All remotes are lost or no working remote available

In this case SKREEM module removal is required. EEprom memory must be read and saved on the computer.

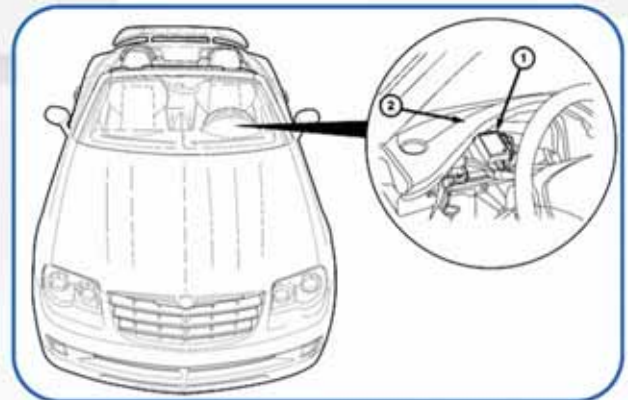
We recommend Orange5, Smok (MBprog) or Carprog programmer with special Click'n Go adapter (corresponding to your SKREEM module model).

In this case no desoldering required, memory safely can be read. Of course, you can use another EEprom programmers at your own risk.

All steps must be completed in order, no steps can be skipped/alterd. Please read carefully.

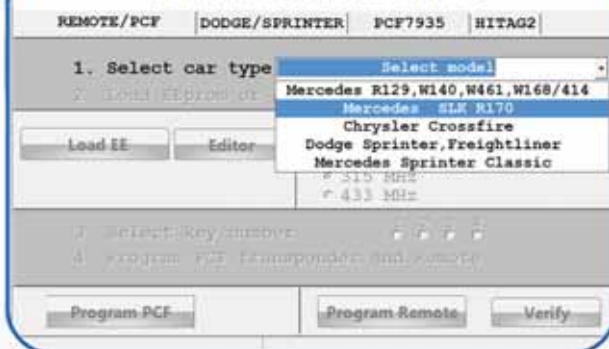


SKREEM adapter with CarProg



SKREEM location

KR55 KEYMAKER



1. According to EEprom programmer manual, read and save EEprom to your computer.

2. Start KR55 Keymaker software.

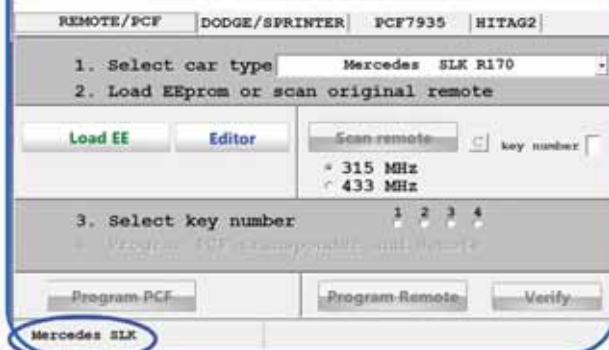
3. Select your vehicle.

4. Select "PCF/REMOTE" tab.

5. Click "Load EE" button. Select SKREEM EEprom file you saved on step 1.

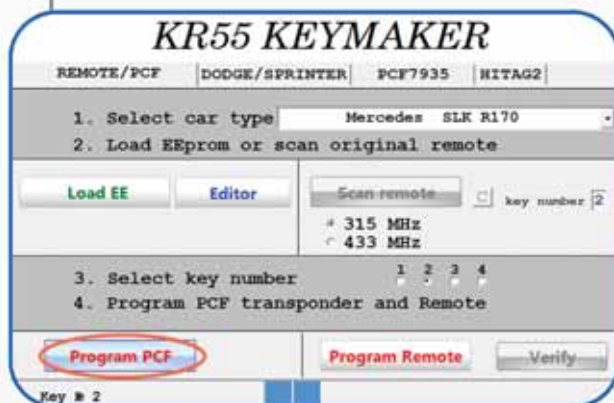
6. Check if your vehicle's model is properly displayed in the left lower corner of Keymaker's window.

KR55 KEYMAKER



If model is incorrect - EEprom wasn't read properly. Read and save EEprom again using Orange5, Smok (MBprog) or Carprog with proper Click'n Go adapter and start again from step 2.

Mercedes SLK R170



7. If vehicle's model displayed correctly, select one of the available key slots.
8. Put a new remote in KeyMaker's programming coil as shown.
9. Click "**PROGRAM REMOTE**" button.
10. Press and hold "Unlock" button on the new remote until you will hear confirmation sound. Blue light will flash and message "OK, please click verify button" will appear.
11. Click "**VERIFY**" button. Now press any button on the new fob. "OK" message and sound will confirm successful programming.
12. Transponder programming. Put key with already programmed remote in Keymaker's programming coil. Click "**PCF PROGRAM**" button. "OK" message and "start" sound will confirm successful transponder programming.
13. Cut the key blade.
14. Now go to the vehicle with new key. If key was correctly programmed, vehicle should start. Turn ignition off, pull key out. Quickly press any button on the remote 5-6 times. Insert key in ignition, turn ignition on (do not start). Quickly press any button on the remote few times (5-6 times). Turn ignition off, pull the key out. Remote should start working. Check all functions of the key. Programming is complete.

1. Adding the key

You must have at least one working remote for the vehicle. Removal of SKREEM module in this case is not required.

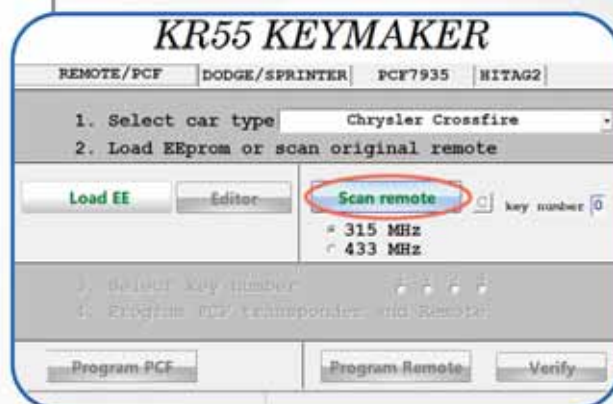
All steps must be completed in order, no steps can be skipped/alterd. Please read carefully.



1. Start KR55 KeyMaker software.

2. Select "PCF/REMOTE" tab.

3. Choose model of the vehicle and frequency of the key. Usually for US and Asian market it's 315 MHz, for the rest of the World - 433 Mhz. After choosing of vehicle type, Keymaker will confirm your choice by voice.



4. Click "Scan remote" button.



5. Hold the original working remote near Keymaker and press "Lock" or "Unlock" button on remote. Original key number will be displayed and selection field will become active. Select one of the available key slots.

Chrysler Crossfire

KR55 KEYMAKER

REMOTE/PCF | DODGE/SPRINTER | PCF7935 | HITAG2

1. Select car type

2. Load EEprom or scan original remote

Load EE | Editor | **Scan remote** | key number

* 315 MHz
r 433 MHz CLOSE BUTTON

3. Select key number

4. Program PCF transponder and Remote

Program PCF | **Program Remote** | Verify

SCANNED CORRECTLY



KR55 KEYMAKER

REMOTE/PCF | DODGE/SPRINTER | PCF7935 | HITAG2

1. Select car type

2. Load EEprom or scan original remote

Load EE | Editor | **Scan remote** | key number

* 315 MHz
r 433 MHz CLOSE BUTTON

3. Select key number

4. Program PCF transponder and Remote

Program PCF | **Program Remote** | **Verify**

KR55 KEYMAKER

REMOTE/PCF | DODGE/SPRINTER | PCF7935 | HITAG2

1. Select car type

2. Load EEprom or scan original remote

Load EE | Editor | **Scan remote** | key number

* 315 MHz
r 433 MHz CLOSE BUTTON

3. Select key number

4. Program PCF transponder and Remote

Program PCF | **Program Remote** | Verify

Key # 1

6. Click "**PROGRAM REMOTE**" button.
7. Put a new remote in KeyMaker's programming slot as shown.
8. Press and hold "Unlock" button on the new remote until you will hear confirmation sound. Blue light will flash and message "OK, please click verify button" will appear.
9. Click "**VERIFY**" button. Now press any button on the new fob. "OK" message and sound will confirm successful programming.
10. Transponder programming. Put key with already programmed remote in Keymaker's programming coil. Click "**PCF PROGRAM**" button. "OK" message and "start" sound will confirm successful transponder programming.
11. Cut the key blade.
12. Now go to the vehicle with new key. If key was correctly programmed, vehicle should start. Turn ignition off, pull key out. Quickly press any button on the remote 5-6 times. Insert key in ignition, turn ignition on (do not start). Quickly press any button on the remote few times (5-6 times). Turn ignition off, pull the key out. Remote should start working. Check all functions of the key. Programming is complete.

2. All remotes are lost or no working remote available

In this case SKREEM module removal is required. EEprom memory must be read and saved on the computer.

We recommend Orange5, Smok (MBprog) or Carprog programmer with special Click'n Go adapter (corresponding to your SKREEM module model).

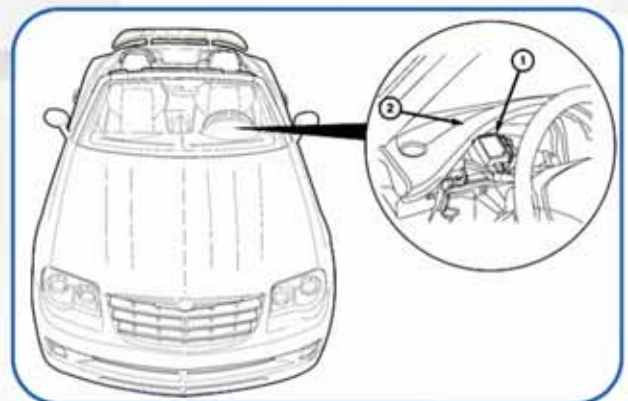
In this case no desoldering required, memory safely can be read.

Of course, you can use another EEprom programmers at your own risk.

All steps must be completed in order, no steps can be skipped/alterd. Please read carefully.



SKREEM adapter with CarProg



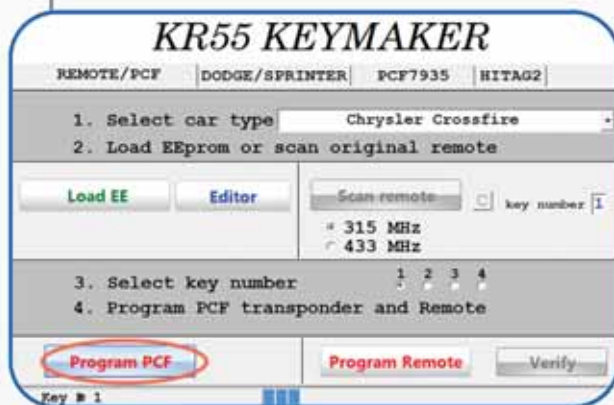
SKREEM location



1. According to EEprom programmer manual, read and save EEprom to your computer.
2. Start KR55 Keymaker software.
3. Select your vehicle.
4. Select "PCF/REMOTE" tab.
5. Click "Load EE" button. Select SKREEM EEprom file you saved on step 1.
6. Check if your vehicle's model is properly displayed in the left lower corner of Keymaker's window.

If model is incorrect - EEprom wasn't read properly. Read and save EEprom again using Orange5, Smok (MBprog) or Carprog with proper Click'n Go adapter and start again from step 2.

Chrysler Crossfire

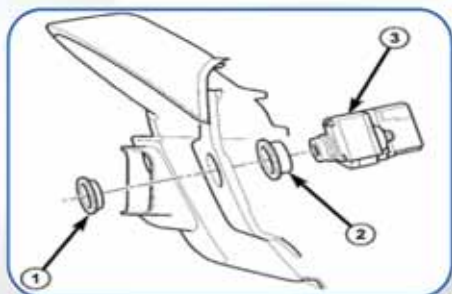


7. If vehicle's model displayed correctly, select one of the available key slots.
8. Put a new remote in KeyMaker's programming coil as shown.
9. Click "Program Remote" button.
10. Press and hold "Unlock" button on the new remote until you will hear confirmation sound. Blue light will flash and message "OK, please click verify button" will appear.
11. Click "VERIFY" button. Now press any button on the new fob. "OK" message and sound will confirm successful programming.
12. Transponder programming. Put key with already programmed remote in Keymaker's programming coil. Click "PCF PROGRAM" button. "OK" message and "start" sound will confirm successful transponder programming.
13. Cut the key blade.
14. Now go to the vehicle with new key. If key was correctly programmed, vehicle should start. Turn ignition off, pull key out. Quickly press any button on the remote 5-6 times. Insert key in ignition, turn ignition on (do not start). Quickly press any button on the remote few times (5-6 times). Turn ignition off, pull the key out. Remote should start working. Check all functions of the key. Programming is complete.

1. Adding the key, easiest way.

Programming new remote and transponder clone.

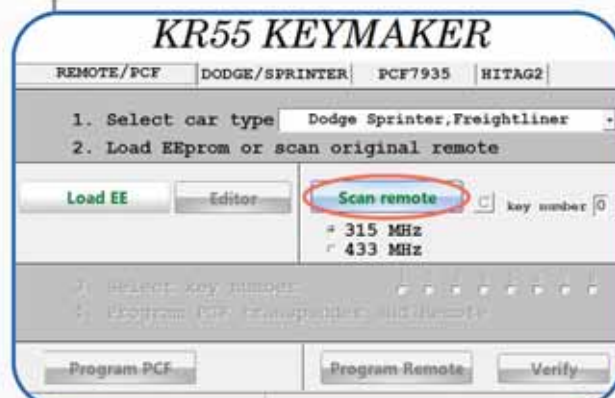
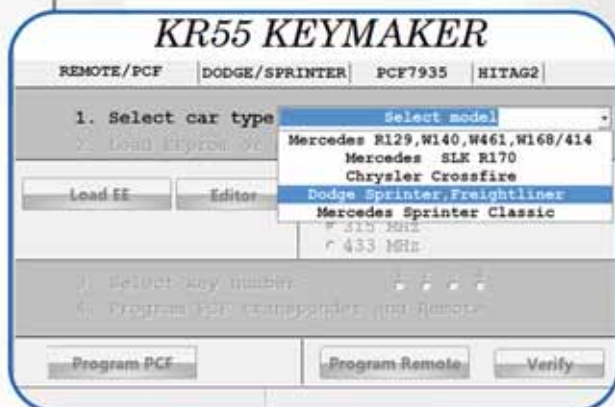
New remote with GMT46 transponder and “GMT46 Black Master Key” must be used.



EIS location

You must have at least one working remote for the vehicle. Removal of EIS module in this case is **not** required.

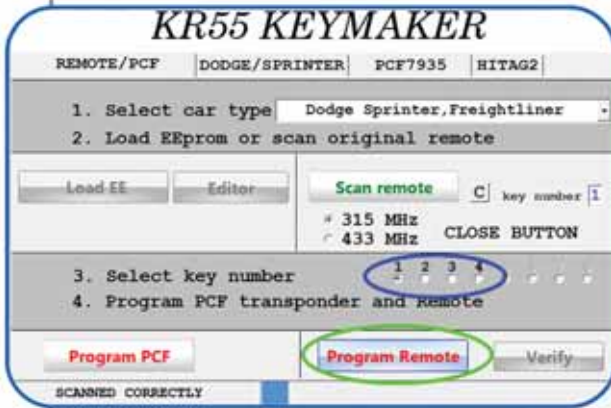
“GMT46 Black Master Key” is reusable, never cut it or give to the customer! All steps must be completed in order, no steps can be skipped/altered. Please read carefully.



1. Start KR55 KeyMaker software.
2. Select “PCF/REMOTE” tab.
3. Choose model of the vehicle and frequency of the key. Usually for US and Asian market it's 315 MHz, for the rest of the World - 433 Mhz. After choosing of vehicle type, Keymaker will confirm your choice by voice.
4. Click “Scan remote” button.
5. Hold the original working remote near Keymaker and press “Lock” or “Unlock” button on remote. Original key number will be displayed and selection field will become active. Select one of available key slots.

Dodge Sprinter, Freightliner

KR55 KEYMAKER



6. Click “**Program Remote**” button.

7. Put a new remote with GMT46 transponder in KeyMaker's programming coil as shown.

8. Press and hold “Unlock” button on the new remote until you will hear confirmation sound. Blue light will flash and message “OK, please click verify button” will appear.

9. Click “**VERIFY**” button. Now press any button on the new remote. “OK” message and sound will confirm successful programming.

KR55 KEYMAKER



10. **Transponder clone.**

Select “DODGE/SPRINTER” tab.

11. Put original key with PCF7936 in Keymaker's programming slot. Click “**Read ID**” button.

Transponder's ID will be shown.

12. Put “GMT46 Black Master Key” in KeyMaker's programming coil.



Dodge Sprinter, Freightliner

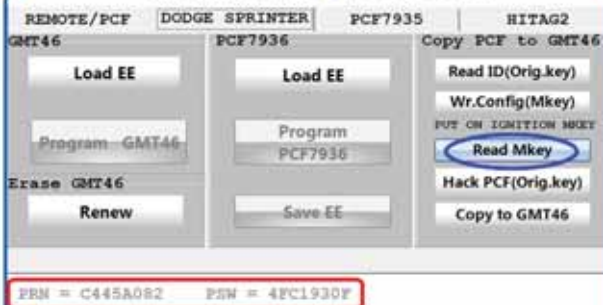
KR55 KEYMAKER



13. Click “Renew” button and then click “Wr.Config(Mkey)” button.
14. Now go to the van with this prepared key and put it in ignition for 5 seconds (**no cutting or turning the key in ignition required!**).
15. Pull the key out and put it in Keymaker's programming coil. Click “Read Mkey” button. Status should be shown (numbers on the bottom). If all numbers are the “0”, “1” or just “Error” message appears, go to step 10 and repeat process again.



KR55 KEYMAKER



16. If status shown correctly (not all “0” or “1”), then put original (working) key in Keymaker's programming slot. Click “Hack PCF(Orig.key)” button. It will take few seconds, status will be shown during process. Wait until “Success” will appear.
17. Now put new remote with GMT46 transponder and programmed earlier remote in Keymaker's programming coil.

18. Click “Copy to GMT46” button. “Successful” message will appear on the bottom.

19. Cut the key blade

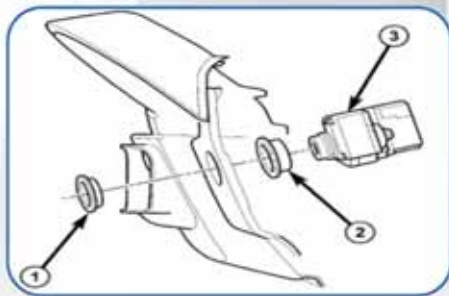
20. Now go to the vehicle with new key. If key was correctly programmed, vehicle should start. Turn ignition off, pull key out. Quickly press any button on the remote 5-6 times. Insert key in ignition, turn ignition on (do not start). Quickly press any button on the remote few times (5-6 times). Turn ignition off, pull the key out. Remote should start working. Check all functions of the key. Programming is complete.

Dodge Sprinter, Freightliner

1. Adding the key (remote).

Programming new remote and new transponder programming (if you don't have the "GMT46 Black Master Key").

New remote with GMT46 or PCF7936 transponder required.

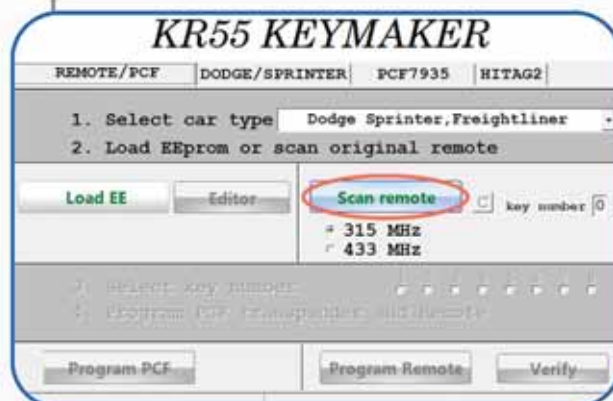


EIS location

You must have at least one working remote for the vehicle. Removal of EIS module in this case is required. EEprom memory must be read and saved on computer.

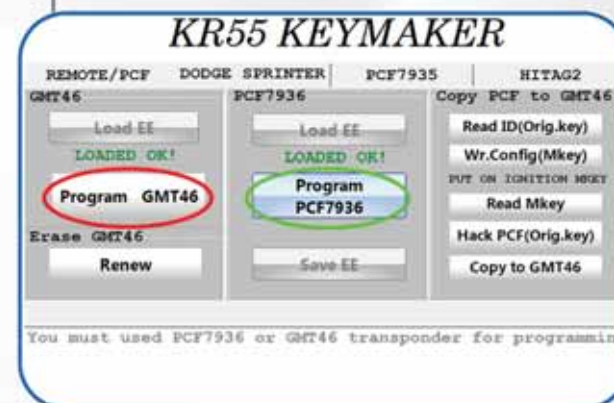
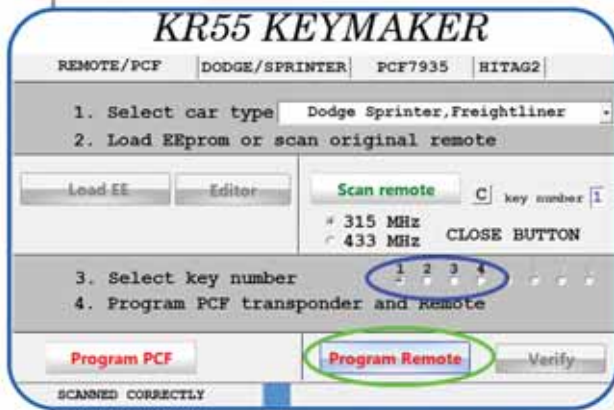
We recommend Smok (MBprog) programmer for proper result, but you can use other EEprom reader at your own risk.

All steps must be completed in order, no steps can be skipped/altered. Please read carefully.



1. Start KR55 KeyMaker software.
2. Select "PCF/REMOTE" tab.
3. Choose model of the vehicle and frequency of the key. Usually for US and Asian market it's 315 MHz, for the rest of the World - 433 Mhz. After choosing of vehicle type, Keymaker will confirm your choice by voice.
4. Click "Scan remote" button.
5. Hold the original working remote near Keymaker and press "Lock" or "Unlock" button on remote. Original key number will be displayed and selection field will become active. Select one of available key slots.

Dodge Sprinter, Freightliner



6. Click "Program Remote" button.
7. Put a new remote in KeyMaker's programming coil as shown.
8. Press and hold "Unlock" button on the new remote until you will hear confirmation sound. Blue light will flash and message "OK, please click verify button" will appear.
9. Click "VERIFY" button. Now press any button on the new remote. "OK" message and sound will confirm successful programming.
10. According to EEPROM programmer manual, read and save EEPROM to your computer.
11. Click "Load EE" button. Select EEPROM file from the EIS.
12. Select one of the available key numbers in "Select key number" field.
13. If new key has GMT46 chip, click "Program GMT46" button. Once message "OK! Rewrite all chip" appears, chip programming is complete.
14. If new key has PCF7936 chip, click "Program PCF7936" button. In a few seconds "WR and Verify OK. Dump EE changed" will appear. Now you need to rewrite modified dump back to EIS module, otherwise new key won't work.
15. Click "Save EE" button to save new EEPROM on your computer.

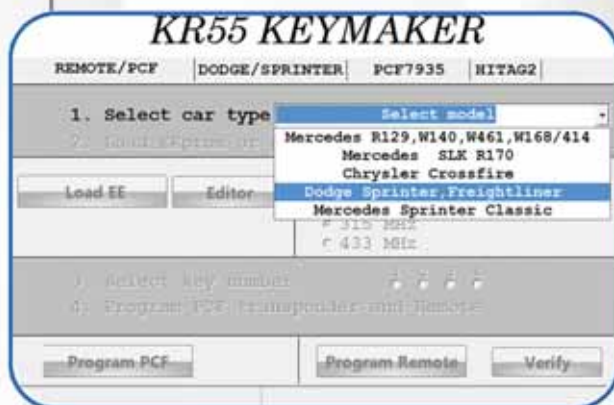
Dodge Sprinter, Freightliner

16. Cut the key blade.

17. Now go to the vehicle with new key. If key was correctly programmed, vehicle should start. Turn ignition off, pull key out. Quickly press any button on the remote 5-6 times. Insert key in ignition, turn ignition on (do not start). Quickly press any button on the remote few times (5-6 times). Turn ignition off, pull the key out. Remote should start working. Check all functions. Programming is complete.

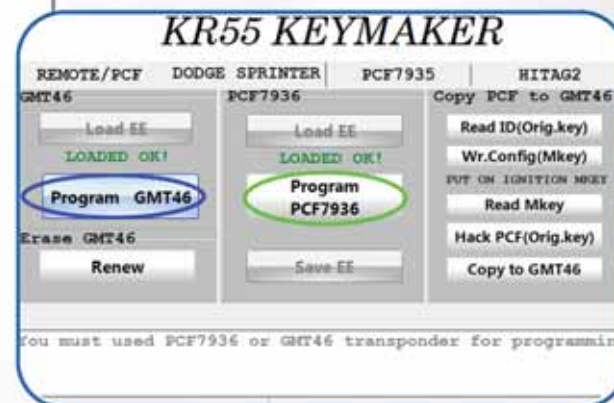
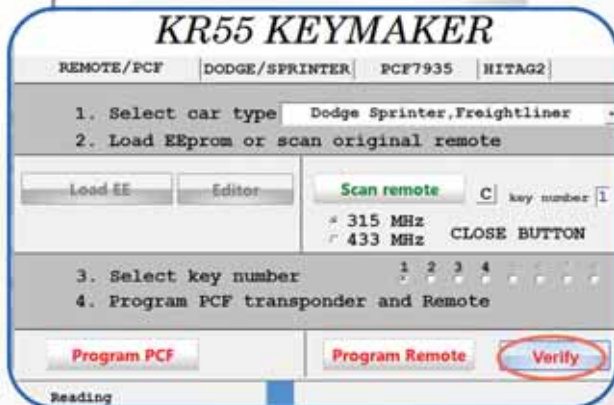
1. All keys lost. New remote with GMT46 or PCF7936 transponder required. Removal of EIS module in this case is required. EEprom memory must be read and saved on computer. We recommend Smok (MBprog) programmer for proper result, but you can use other EEprom reader at your own risk.

All steps must be completed in order, no steps can be skipped/altered. Please read carefully.



1. According to EEprom programmer manual, read and save EEprom to your computer.
2. Start KR55 KeyMaker software.
3. Select "PCF/REMOTE" tab. Select your vehicle.
4. Click "Load EE" button. Select EEprom file which you saved on step 1. Verify that your vehicle is properly identified (message in the left bottom corner). If there is "Error" message - EEprom wasn't read properly. Read and save EEprom again using Orange5, Smok (MBprog) or Carprog with proper Click'n Go adapter and start again from step 2.
5. Select available key slot in "Select key number" field.
6. Put a new remote in Keymaker's programming coil. Click "Program remote" button.

Dodge Sprinter, Freightliner



7. Press and hold “Unlock” button on the new remote until you will hear confirmation sound. Blue light will flash and message “OK, please click verify button” will appear.
8. Click “**VERIFY**” button. Now press any button on the new fob. “OK” message and sound will confirm successful programming.
9. Click “Load EE” button. Select EEPROM file which you saved on step 1. Select available key slot in “Select key number” field.
10. If new remote has GMT46 chip, click “**Program GMT46**” button. Once message “OK! Rewrite all chip” appears, chip programming is complete.
11. If new remote has PCF7936 chip, click “**Program PCF7936**” button. In a few seconds “WR and Verify OK. Dump EE changed” will appear. Now you need to rewrite modified dump back to EIS module, otherwise new key won't work.
12. Click “Save EE” button and save new EEPROM on your computer.
13. Cut the key blade.
14. Now go to the vehicle with new key. If key was correctly programmed, vehicle should start. Turn ignition off, pull key out. Quickly press any button on the remote 5-6 times. Insert key in ignition, turn ignition on (do not start). Quickly press any button on the remote few times (5-6 times). Turn ignition off, pull the key out. Remote should start working. Check all functions. Programming is complete.