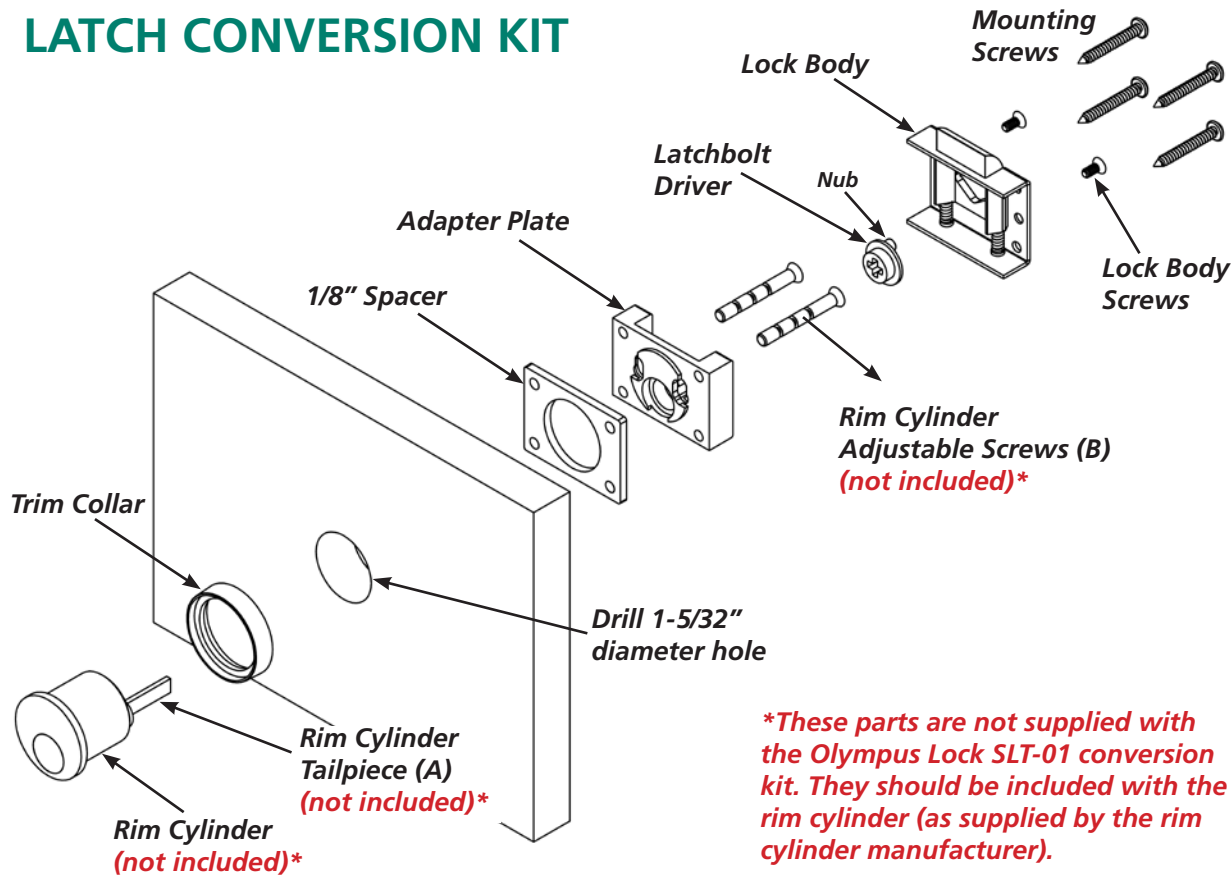


LATCH CONVERSION KIT



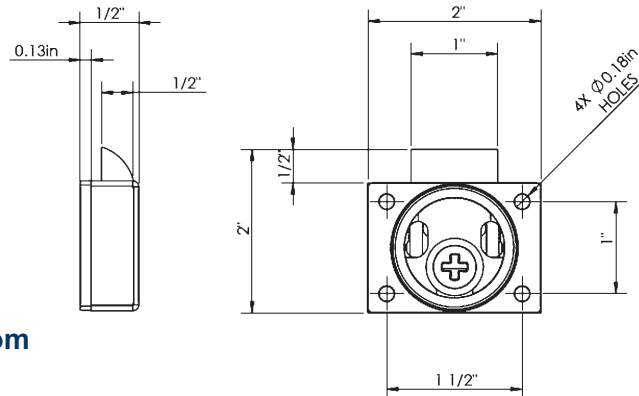
*\*These parts are not supplied with the Olympus Lock SLT-01 conversion kit. They should be included with the rim cylinder (as supplied by the rim cylinder manufacturer).*

**Included Accessories:**

Trim collar, 1/8" plastic spacer, adapter plate, latchbolt driver, lock body, lock body screws, mounting screws, lipped latch strike.

**Optional Accessories:**

Plastic spacers: 1/8", 1/4" or 1/2", and assorted latch strikes. (See [www.olympuslock.com](http://www.olympuslock.com) for details on all optional accessories).



INSTALLATION STEPS

- Step 1.** Determine where the lock will be located, then drill a 1-5/32" diameter hole for insertion of the Rim Cylinder. You may elect to drill pilot holes for the lock Mounting Screws at this time as well.
- Step 2.** Insert the Rim Cylinder through the Trim Collar, then through the hole created in Step 1.
- Step 3.** Determine if you will be using the supplied 1/8" Spacer or any of our other optional spacers.
- Step 4.** Hold the Adapter Plate (and spacer, if applicable) into place, then trim the Rim Cylinder Adjustable Screws (B) and Rim Cylinder Tailpiece (A) as required for a secure fit. The Rim Cylinder Tailpiece (A) should fit securely into the plus + shaped receiver in the Lock Body, but should not be so long that it protrudes all the way through the + shape and interferes with the smooth movement of the latchbolt when turning the key.
- Step 5.** Secure the Rim Cylinder, Trim Collar, Spacer (if applicable) and Adapter Plate into place using the Rim Cylinder Adjustable Screws modified to the correct length in Step 4.
- Step 6.** Fit the Latchbolt Driver onto the Rim Cylinder Tailpiece (trimmed earlier in Step 4) so that the Nub is positioned at the top. Place the Lock Body onto the Adapter Plate and attach with supplied Lock Body Screws.
- Step 7.** Secure the Lock Body to the cabinet using the supplied Mounting Screws.
- Step 8.** Install lipped latch strike (not shown) where applicable.

**Note:** Varying material thicknesses can be accommodated by modifying the length of the Rim Cylinder Tailpiece (A) and Adjustable Screws (B) which are included standard in the Rim Cylinder package, and using or not using the supplied 1/8" Spacer. (Additional spacers are available separately. (See [www.olympuslock.com](http://www.olympuslock.com) for details).)