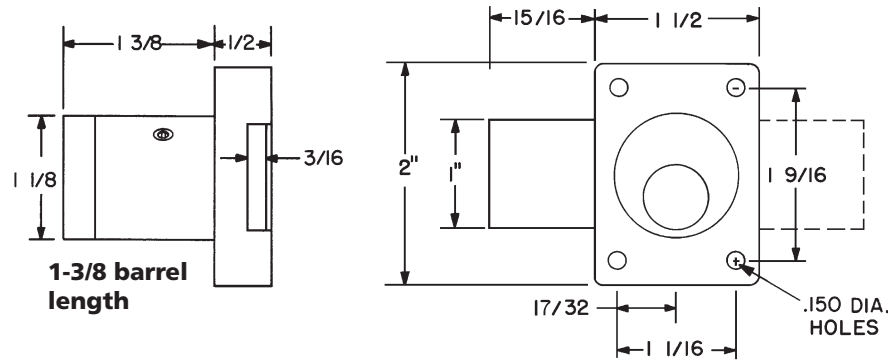
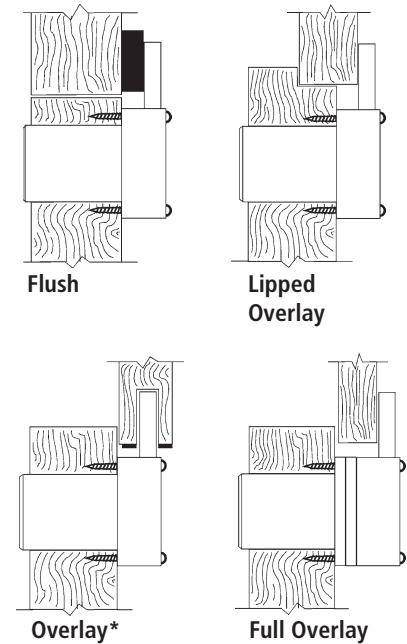


Accepts SARGENT
C480-2 (13-3457)
deadbolt cylinder



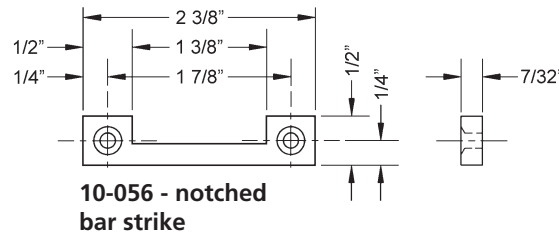
Typical Installation



*Overlay installation is not recommended for particleboard.

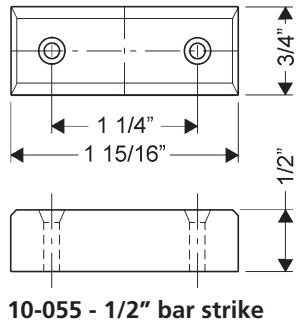
Included Accessories:

- 1 10-056 notched bar strike
- 4 lock mounting screws
- 1 10-360 universal driver
- 1 754-TP tailpiece (Sargent)

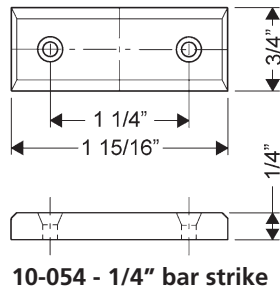


10-056 - notched bar strike

Strike options Note: use of spacers and strikes depends on application and material thickness.



10-055 - 1/2" bar strike



10-054 - 1/4" bar strike

Spacer options

