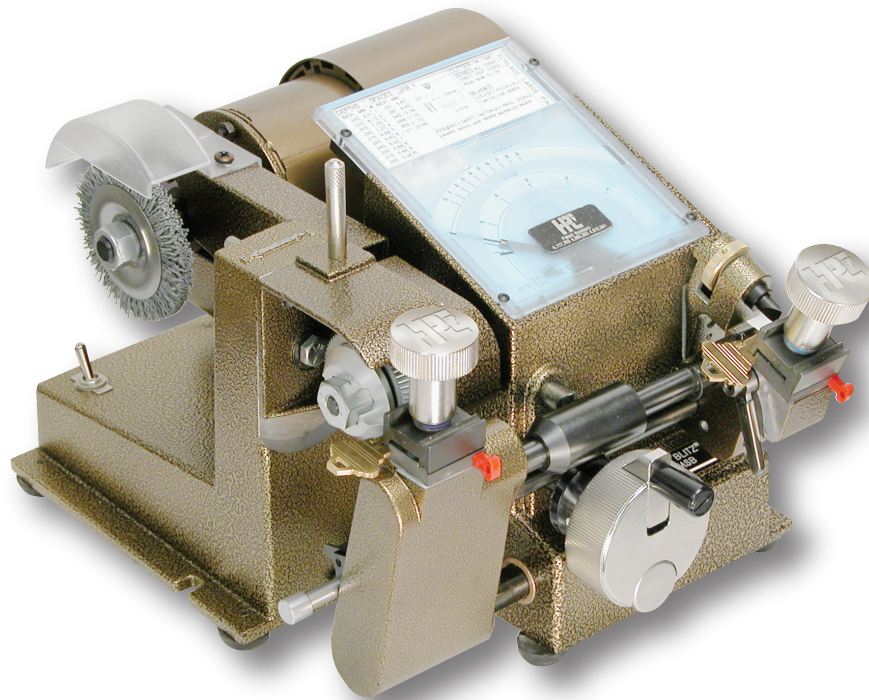


Switch Blitz™

Code Milling And Duplicating Key Machine

No. 1233CMSB



HPC, Inc. Schiller Park, Illinois • 60176 • U.S.A. www.hpeworld.com © Copyright 2012

062612 36CSB_000_00

INTRODUCTION

Switch Blitz™

Thank you for your purchase of the Switch Blitz™ Machine; we appreciate your business.

From its introduction in the 70's, the Blitz™ Machine revolutionized the locksmith industry. Never before had it been so easy to cut keys by code. No more fumbling around with time-consuming depth keys. No more confusing micrometer measurements and complicated machine set-up. The “key” to this revolution was translating the lock manufacturers’ depth and space measurements to code cards. Simply insert the code card for the lock you are using, set the space needle to the number 1 mark on the card, and set the depth needle to the appropriate depth for the cut required. Next, move the space needle to the second space, and move the depth needle to the appropriate number for this cut. Continue this simple procedure to cut a new key (to the manufacturer’s exact specifications) in less than 1 minute. The innovative design of the Blitz™ Machine earned it three U.S. Patents. It became the best selling code machine - the standard of the industry that everyone wanted to copy.

The Blitz™ Machine is an integral piece of virtually every locksmith business. In addition to cutting by code, every locksmith has to duplicate keys and has one or more duplicators. Often the machine of choice is the HPC Trace-A-Key® semi-automatic duplicator, judged to be the fastest and most accurate duplicator on the market. The most common request, especially among mobile locksmiths, was the desire for their code machine and duplicator to use less bench space. This inspired the engineers at HPC to combine the best code machine with the best semi-automatic duplicator; and in July 2003 HPC introduced the Switch Blitz™. Now in the bench space of one machine you have two top-quality key machines. The brilliant design and engineering makes the switch from code cutting to duplicating as simple as 1, 2, 3.

Thank you again for your new purchase. We are confident this machine will provide years of keycutting perfection.

HPC, Inc.
3999 N. 25th Avenue
Schiller Park, IL 60176 USA
Tel: 847.671.6280
Fax: 847.671.6343
Email: hpc@hpcworld.com
www.hpcworld.com



PRODUCT PACKAGING CHECKLIST

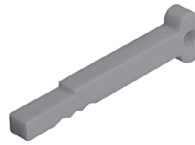
Accessories Included:



Binder With Storage Panels
(CARD-SB)



Standard Cutter Nut
(CM-1039MA)



(2) Red Tip Gauges
(CM-1054MA)



(2) Horseshoe Tip Gauges
(CM-1054R)



CW-1011 - Automotive & Small Cylinders
CW-14MC - Standard Large Pin Cylinders
(installed on machine)
CW-6010 - Duplicating



Code Card Deck
(DECK-150)



Key Gauging Shim
(KBPS-1)



Cutter Shaft
Wrench
(WRENCH-1)



Allen Wrench
5/64-inch
(WRENCH-2) Cutter Shaft
Wrench
(WRENCH-3)

OPTIONAL ACCESSORIES:



Carrying Case
(1200 CASE)



Storage Panel
(CARD-BP)



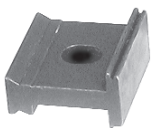
HPC Software



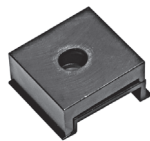
Tip Gauges
(HT-125, HT-625, HT-SD, RT-SD)



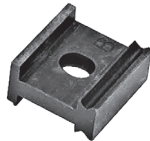
Key Decoder
(HKD-75)



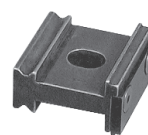
Medeco® Jaw
(MJ-1)



Medeco KeyMark® Jaws
(MJ-2)



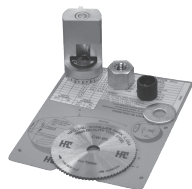
Medeco® 3 Freedom Jaws
(MJ-3)



Schlage PRIMUS® Jaw
(SPJ-1)



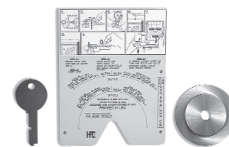
HPC Cutters



Switch Blitz™
Tibbe Key Adapter Kit
(TIBBE-SWITCH)



Switch Blitz™
Tubular Key Adapter Kit
(TKA-SWITCH)



Calibration Kit
(CMB-CK)

INDEX

Subject	Page No.
Introduction	1
Product Packaging Checklist.	2
Parts Designation Chart	4
1.0 Code Cards	5
1.1 Familiarization	6
1.2 Micrometer Cards	7
2.0 Cutters	9
2.1 Stock, Optional	10
2.2 Changing Cutters	14
3.0 Gauging and Holding Keys	15
3.1 Key Gauges	16
3.2 Shoulder Gauge Safety Switch	17
3.3 Vise Jaws	18
3.4 Use of Jaw B	20
3.5 Tip Stops	22
3.6 Red Tip Stop	24
3.7 Black Horseshoe TipStop (Short End)	26
3.8 Medeco® Jaw C	28
3.9 Black Horseshoe TipStop (Full End)	30
4.0 Depth and Space Crank Controls.	33
5.0 Cutting the Key	39
5.1 Code Cutting	40
5.2 Duplicating	54
6.0 Angle Cut Keys	65
6.1 Use of Swivel Cutter Head	66
6.2 Decoding and Cutting	67
7.0 Calibration	81
7.1 Tip Gauge (for Code Cutting)	83
7.2 Shoulder Gauge (for Code Cutting)	94
7.3 Depth Calibration (for Code Cutting)	106
7.4 Tip Gauge (for Duplicating)	112
7.5 Shoulder Gauge (for Duplicating)	116
7.6 Depth (for Duplicating)	121
8.0 Preventive Maintenance,Lubrication, Repairs and Warranty	127
9.0 Exploded Views and Part Lists	131

SWITCH BLITZ™

PARTS DESIGNATION CHART

