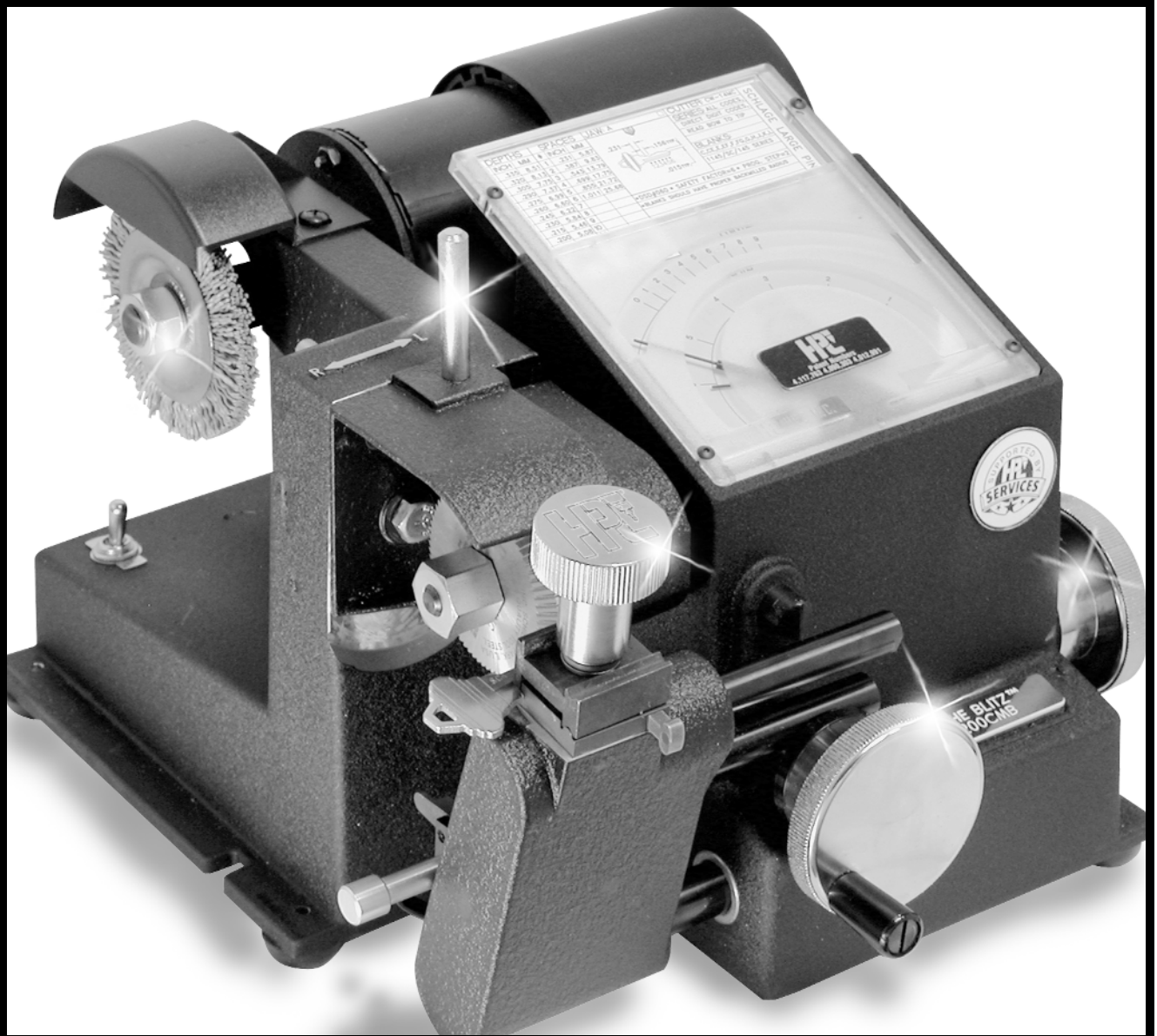


Blitz™

1 2 0 0 C M B

CODE MILLING KEY MACHINE



© Copyright 2004
HPC, Inc.
Schiller Park, Illinois • 60176 • U.S.A.



INTRODUCTION

The Blitz™ is HPC's upgraded version of the 1200CM Code Machine. It works exactly the same as the 1200CM, but has several added features. Both the depth and spacing shafts have fewer threads per inch, which means that substantially less revolutions are needed to achieve the full range of travel. Plus, the Blitz™ Code Machine is equipped with HPC's Softie™ deburring brush with a safety shield.

This revolutionary code milling machine has made all others obsolete and is now the "Standard of the Industry". The Blitz™ is very simple to use and extremely versatile. It cuts by actual manufacturer's depths and spaces. There is no need to convert to micrometer readings. With its rotating cutter head, the Blitz™ can cut *Medeco® keys (including Biaxial™).

This machine cuts accurate keys by code quickly and easily. The ease of changing from one manufacturer's specifications to another's is so simple, it is unparalleled. Even radically different changes can be set up in 10 to 30 seconds without wasting any key blanks.

This dramatic code cutting advancement is made possible through the use of code cards, which are inserted in the code machine. These cards have depth and space indicators, plus all the pertinent information such as cutter, jaw, code series, blanks and any special information you may need. Quite often, just replacing a code card is all that is required when making a change. Depth and space adjustments are never required in changing from one manufacturer to another. The Blitz™ Code Machine is a must for those who create master key systems or do code work.

A fully illustrated, step-by-step set of instructions is contained in the following pages. Please, be sure to spend some time reading and understanding all the steps thoroughly - so that NONE of the unique capabilities of this unusual machine is overlooked.

You will find, that cutting keys to dimensions more exact than the lock manufacturer's themselves produce, is accomplished with extraordinary ease - on this machine!

For those people, who currently own a 1200CM style key machine and want to upgrade to a Blitz™, HPC has just such a conversion program. Please contact your Authorized HPC Distributor for details on this process.

PLEASE NOTE:

- This manual is for all motorized 1200 series code machines. These include all models of the 1200CMB (ACDC, DC, 240V etc.)
- The 1200CMB Series machines have a Softie™ deburring brush.
- All usage, adjustment and maintenance functions are the same on all models.
- **All pictures shown are of model 1200CMB.**

*Medeco® is a registered trademark of Medeco Security Locks, Inc.

121504 36CMB-000-PR



BLITZ™
1200CMB



PRODUCT PACKAGING CHECKLIST

ACCESSORIES INCLUDED:



Binder With Storage Panels and Replacement Scratch Pad* (CARD-B, CARD-BP, CP-5)



Red Tip Gauge (CM-1054MA)



Horseshoe Tip Gauge (CM-1054R)



Code Card Deck* (DECK-150)



Key Gauging Shim (KBPS-1)



Wrenches (WRENCH-1, WRENCH-2, WRENCH-3)

*NOT included with 1200B series machines

OPTIONAL ACCESSORIES:



Carrying Case (1200 CASE)



Storage Panel (CARD-BP)



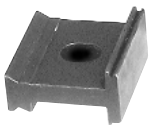
HPC Software



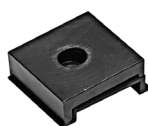
Tip Gauges (HT-125, HT-625, HT-SD, RT-SD)



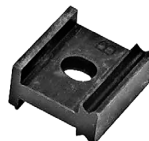
Key Decoder (HKD-75)



Medeco® Jaw (MJ-1)



Medeco KeyMark® Jaws (MJ-2)



Medeco® 3 Freedom Jaws (MJ-3)



Schlage PRIMUS® Jaw (SPJ-1)



HPC Cutters



Blitz™ Tibbe Key Adapter Kit TIBBE-CMB



Blitz™ Tubular Key Adapter Kit (TKA-CMB)



Calibration Kit (CMB-CK)



The Little Mac™ (MAC-CM)



Spacer Washer (SPR-5)

INDEX

<u>SECTION</u>	<u>SECTION NUMBER</u>	<u>PAGE</u>
Code Cards	1.0	5
Typical Information		6
Storage, Use and Care		9
Micrometer Cards		10
Cutters	2.0	13
Stock, Optional		14
Changing Cutters		18
Gauging and Holding Keys	3.0	23
Key Gauges		25
Vise Jaws		27
Depth and Space Crank Controls	4.0	53
Cutting the Key	5.0	54
Angle Cut Keys	6.0	75
Use of Swivel Cutter Head		76
Decoding and Cutting		77
Re-calibration of Depth	7.0	93
Cutting Too High or Low		97
Re-calibration of Space	8.0	99
Cutting Too Close or Too Far from the Tip		102
Cutting Too Far or Too Close to the Shoulder		113
Preventive Maintenance, Lubrication, Repairs and Guarantee	9.0	125
Exploded Views	10.0	129

PARTS DESIGNATION CHART FOR THE 1200CMB CODE MACHINE

