



DOOR CLOSER

# R402

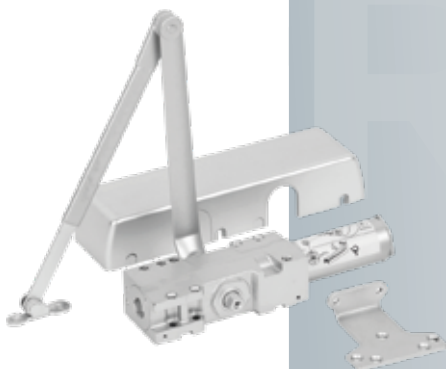


- ▲ Recommended type for Fire Doors UL 10C Certified
- ▲ Meet with ANSI 156.4 Grade 1, 2 millions life cycles
- ▲ Multi size, adjustable spring force from 1-4 to 3-6
- ▲ Rock and pinion mechanism contained in a high tensile precision cast aluminium housing
- ▲ Needle bearing
- ▲ Optional delay action and Slim full plastic cover
- ▲ ADA: 5016 with Barrier Free (BF) function for elderly / handicapped
- ▲ Universal application. Non-handed for standard, top jamb or parallel arm installation
- ▲ Included Components:  
Bracket and Plastic inclined cover

Item	Description
------	-------------

R402	Door closer Fire Rated
------	------------------------

# R403



- ▲ America Style Designed, Heavy Duty for Commercial Doors UL Certificated
- ▲ 2 million Endurance cycles
- ▲ Precise Cast Iron Body & Forged Steel Arm, Hold Open Arm Optional
- ▲ Adjustable Closing & Latching Speed
- ▲ Adjustable Back-Check, Delay Action Optional.
- ▲ Precision Heavy Duty Rack (Piston) & Pinion Gear, Needle Bearing
- ▲ Decorative Plastic Cover & Stainless Steel cover Optional
- ▲ Barrier Free, Lower opening resistance for the handicapped / Elderly

Item	Description
------	-------------

R403	Door closer Fire Rated
------	------------------------