

2090 Series

Rim crossbar device

Classic looks in a rim exit device.

The 2090 provides balanced appearance, dependable performance and economical pricing, making it a popular choice where rim exit devices are required.

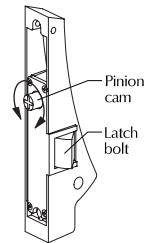


If cylinder is used, set pinion cam on back of active housing for hold-back (HB) or night latch (NL) operation.

Hold-back (HB)

Turning key one complete rotation retracts latchbolt. If key is removed in this position, latchbolt stays retracted. Returning key to original position before removing allows latchbolt to extend.

To set for hold-back: Turn pinion cam until latchbolt starts to retract, then turn pinion cam the other way as far as it will go. Leave pinion cam in this position.



Night latch (NL)

Turning key as far as it will go retracts latchbolt. Key must be returned to original position to be removed, leaving the door locked.

To set for night latch: Turn pinion cam until latchbolt starts to retract. Leave pinion cam in this position.

Specifications

Hand:	Specify RHR or LHR, not reversible
Functions:	See trim selection chart on this page
Finishes:	P28, P13, P35, US26D
Strikes:	SD36 standard, see page 17 for other rim strikes available
Latchbolt:	1/2" throw hardened steel
Dogging feature:	Hex dogging standard
Cylinder:	Rim, key entry (NL) or hold back (HB) available (field selectable)
Sizes:	Field adjustable width, 41" crossbar standard extra length crossbars available
Doors:	1 3/4" thick metal or wood doors, specify if wood door; 9970 is for use on HM and Alum doors only; Not for use on wood doors
Projections:	4 3/8" extended, 2 1/2" depressed
Stile:	1 3/4" minimum
Fasteners:	All mounting screws are concealed
UL:	UL305 listed
Mullions:	Removable mullions are available for pairs of doors, see page 14

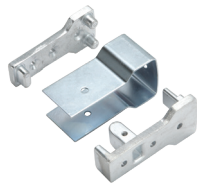
Model	Trim package	Type	Function
2090	No outside trim	4	01
2091	Pull only (9970)	4	02
2092	Cylinder only	4	03/04
2093	Pull and cylinder	4	02/03/04

Accessories

Mullions



RM 70



Mullion Brackets



525 Mullion Stabilizer

RM 70 Removable mullion

RM 70 for use with 2090 Series comes complete with adjustable mortised strikes and security clips. Compatible with doors 7' to 10' and for use with stiles as narrow as 1 3/4". Made of aluminum, they are available in anodized aluminum or bronze finishes. Mullion is 3 1/2" deep, 1" wide on door side, and 1 5/8" at the widest point.

Mullion strikes



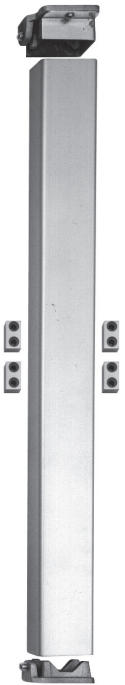
STK70

Adjustable mortise strikes (pair).

2 3/8" tall

1 7/16" wide

1" thick



F-4023 Shown

Removable mullion

- The 2923, (F)4023 and KR(F)-4023 steel mullions are for use with the XX-R devices on double door openings. Advantage: Increased security and tighter closure. Minimizes door warpage and sag. Regulates the flow of in-and-out traffic.
- Falcon removable mullions are easily removed and reinstalled for full width access.
- Rim devices are used on both leaves, attaining a perfectly symmetrical opening.
- The mullion assembly consists of a mullion, top and bottom mounting brackets and a screw pack. Soffit adapters are available for use with either the 2923 or the 4023 mullion. Please see Price Book for ordering information.
- The (F)4023 and KR(F)-4023 fire-rated mullion also includes four stabilizer blocks as required for labeled installations.
- Strikes are not furnished with the mullion. Please see page 15 for strike information.
- Mullions may be cut on the job for doors under stock lengths.
- KR Mullions require 1 1/4" mortise cylinders with standard "A" cam.

Mullion features

- Mullion fittings – ductile iron.
- (F)4023, cylinder removable mullions KR(F)-4023 - 2" x 3" x height.
- 2923 mullion – 1 1/2" x 2 1/2" x height.
- Prime coat only.
- 7' or 8' door opening standard, other door openings as specified.

Accessories

Strikes

Concealed vertical rod



PB48

Top strike for 1990 devices.
Packed with three 0.050" thick shims.
1 1/16" square
7/16" projection

Rim



STK45

Strike for inactive leaf,
pair of doors with
2090 devices.
3 1/4" tall
1 5/16" wide
1/4" thick



SD35

Strike for 1/8" x 1/2"
blade stop, 2090
device.
1 3/4" tall
1 3/4" wide
1/2" thick



SD36

Strike for all stops,
2090 device.
1 3/4" tall
1 3/4" wide
1/2" thick

Pull



9970

Can be used with all
devices.
9 1/4" center to center
2 7/8" projection
1 3/4" clearance

Cylinders

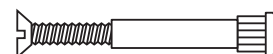
- Cylinders for XX-R and XX-V Series devices with cylinder operation are rim cylinders with either horizontal or vertical tailpiece.
- Cylinders for XX-C and, XX-M and Series devices are mortise cylinders with standard thread (1 5/32" - 32). The standard cams furnished with most manufacturers mortise cylinders will operate mortise locks, as well as concealed Delta trim operators for XX-C devices. (Cams measure approximately 1" overall and 5/16" wide at tip.) Exception: Concealed C & NL require cam B250-295.
- Cylinder supplied only when specified.
- 1 1/4" long with standard cam and "G" keyway only.
On Delta C trim for vertical and concealed vertical C and NL functions 1 1/8" - 1 1/4" long cylinder by blocking ring required with cam B250-295.
- Cylinders available keyed and keyed different.
- XX-M devices using 811K, 812L or 816L trim require a 1 1/2" cylinder.

Sex Bolts

Sex bolts are available in lengths (under the head) of 12 1/32". Screws to fit are available in 3/4" and 2" lengths to cover a wide range of door thicknesses.

B-2729 (#10-24 Thread)

B-4122 (1/4-20 Thread)



How to order

1990/2090

		1990	DT	P28	PL*	RHR†
1990	See model numbers on page 12					
2090	See model numbers on page 13					
EO	Exit only					
DT	Dummy trim - 9970 pull					
NL-HBOP	Rim cylinder					
NLHB-P	Rim cylinder with 9970 pull					
P28	P35					
P13	US26D					
HEX	Standard bottomlatch					
RL	Rod bottom latch					
PL	Pullman bottomlatch					
ES	Top latch for use with electric strike					
LBR	Less bottom rods					
RHR	RHR					
LHR	LHR					

Note: Crossbar furnished 41" standard. Extra length crossbar 48" is available.

* Applies to 1990 only

† Applies to 2090 only