

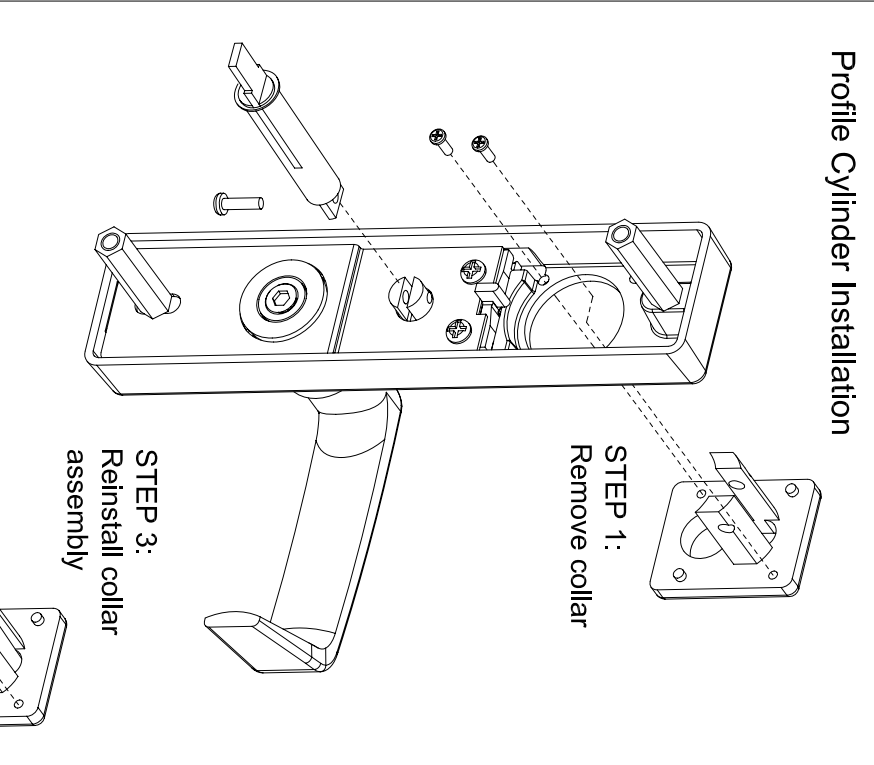
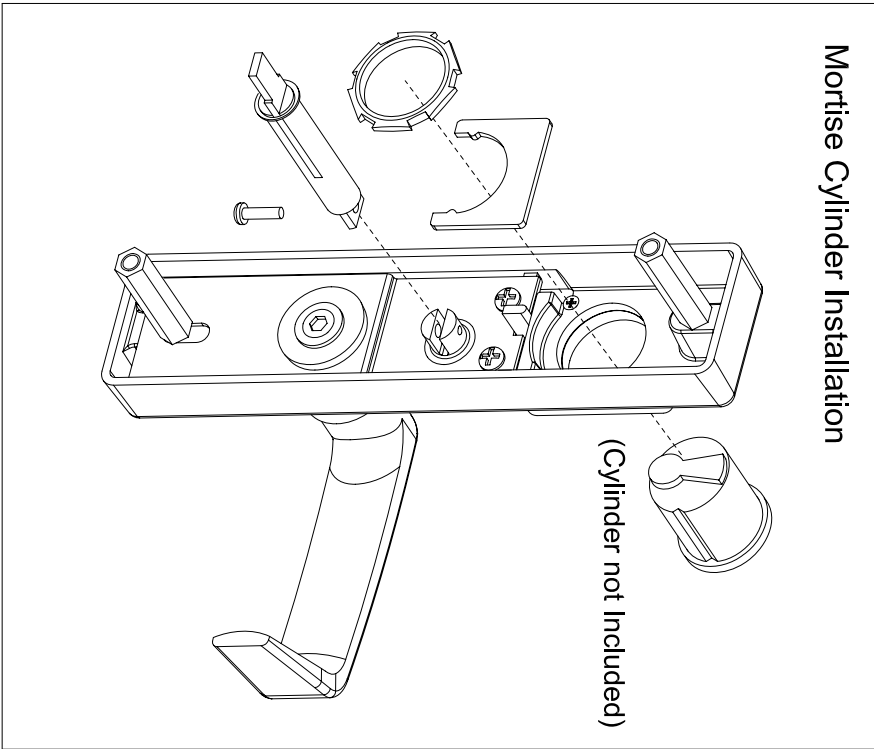
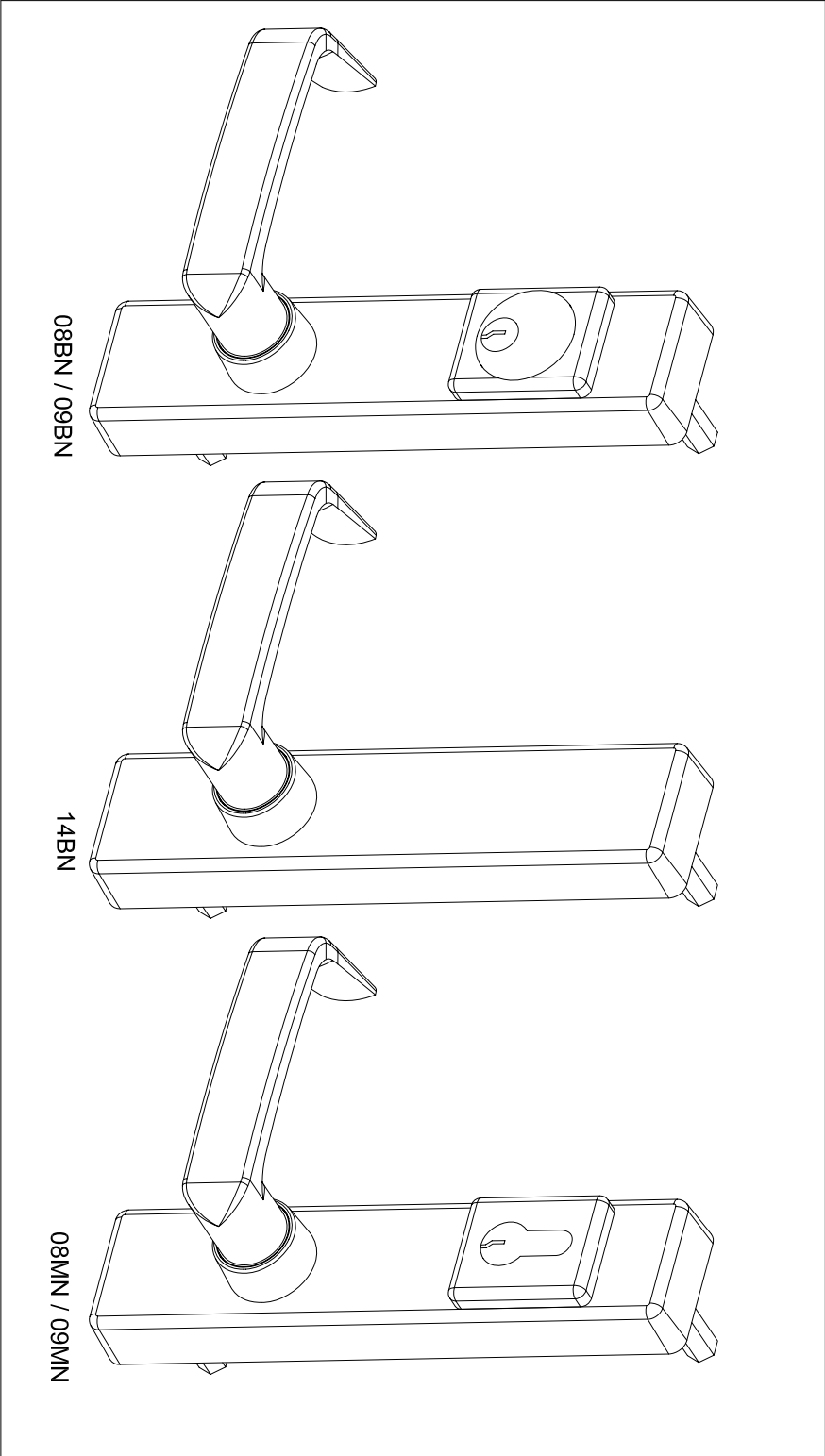


® Detex Corporation, 302 Detex Drive, New Braunfels, Texas 78130-3045
(830)629-2900 / 1-800-729-3839 / Fax (830)620-6711
E-MAIL: detex@detex.com INTERNET: www.detex.com

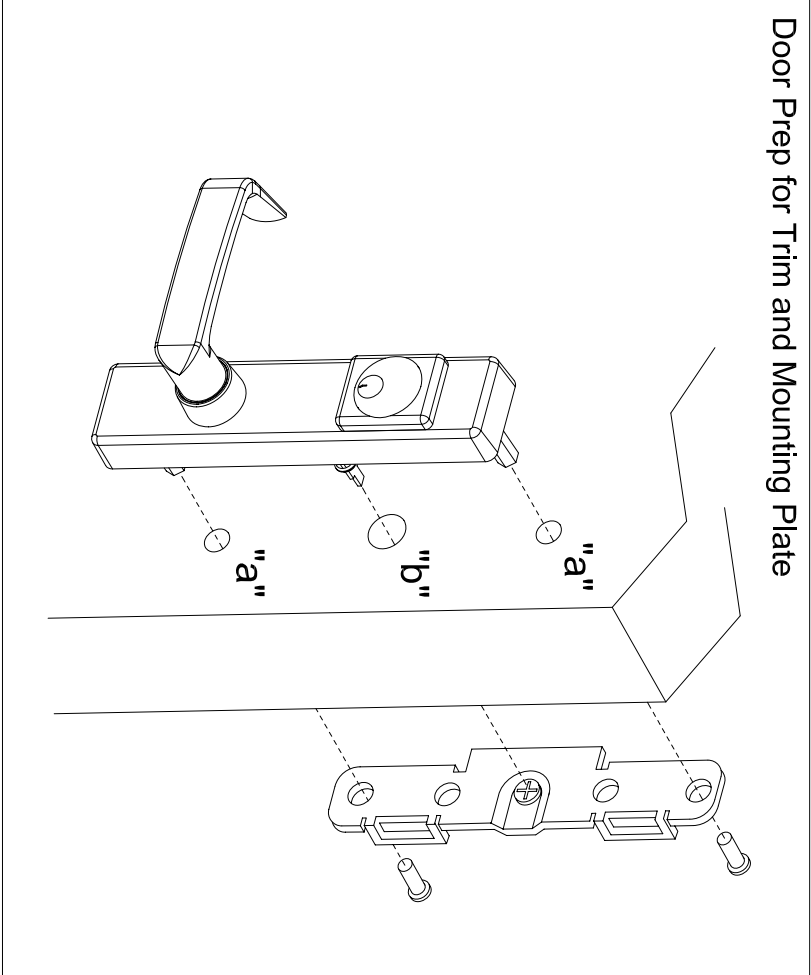
TEMPLATES ARE AVAILABLE ON WEBSITE

102995 November 19, 2007

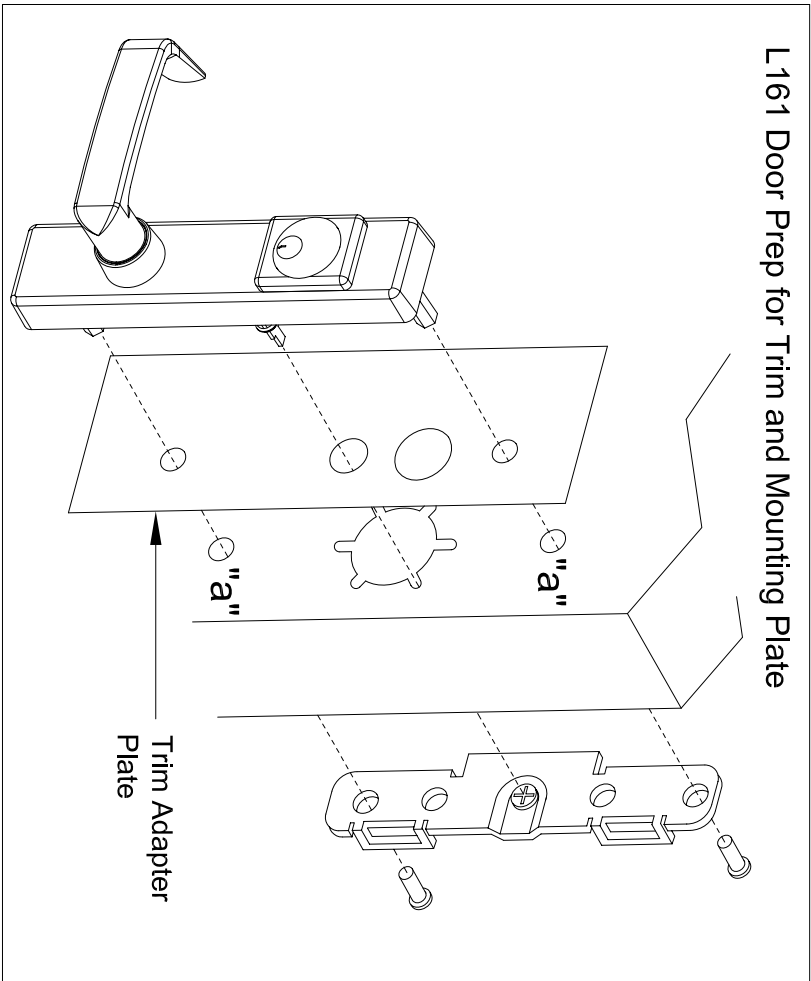
INSTALLATION INSTRUCTIONS FOR DETEX VALUE SERIES® NARROW TRIM



Door Prep for Trim and Mounting Plate



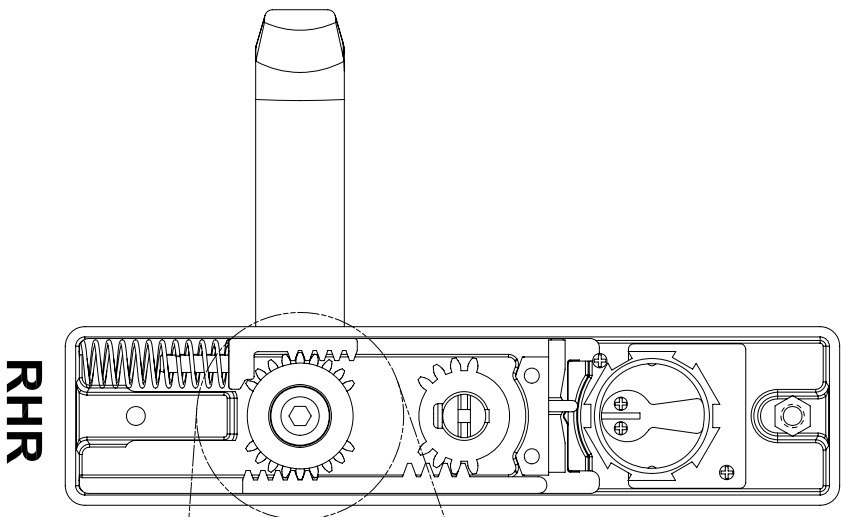
L161 Door Prep for Trim and Mounting Plate



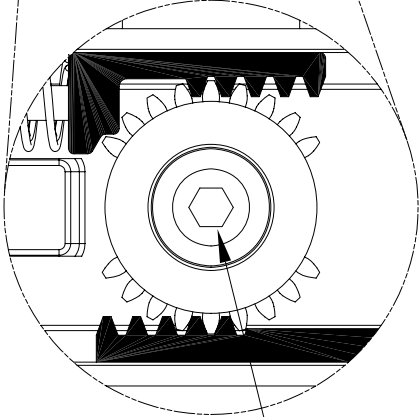
HOLES "a"	HOLE "b"
<div>INSIDE (Metal Doors Only)</div> <div>5/16" (8mm)</div>	<div>3/4" (20mm)</div> <div>THRU HOLE</div>
<div>OUTSIDE</div> <div>1/2" (13mm)</div>	

CHANGE LEVER HANDING

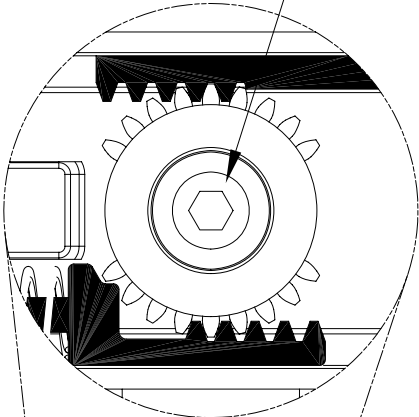
Before removing Top and Bottom Racks, note tooth positions.
If excessive play exists on handle, confirm tooth alignment.



RHR



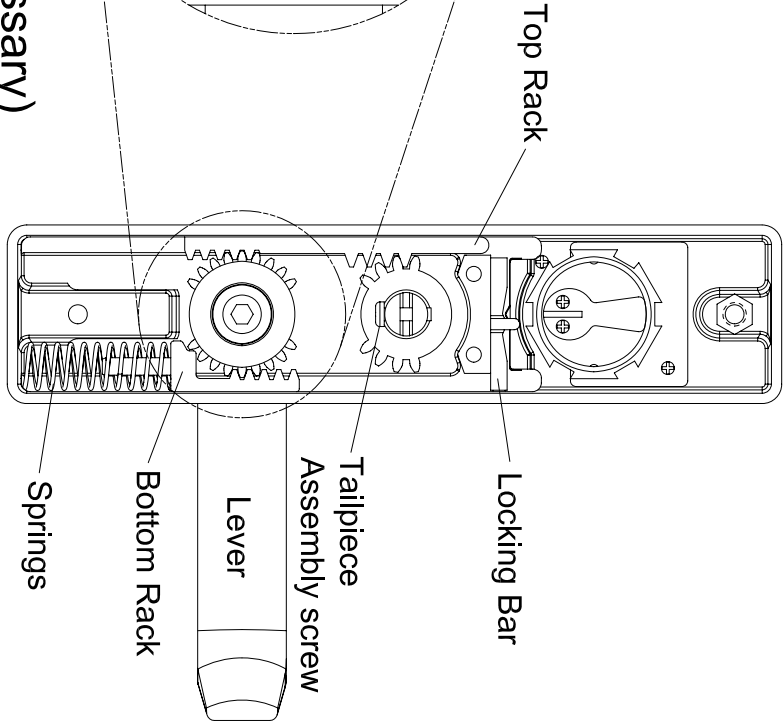
DO NOT
REMOVE SCREW



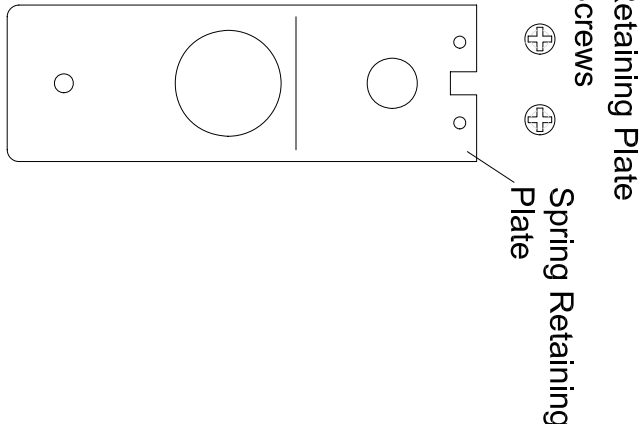
- A. Remove tailpiece assembly screw. (remove assembly if necessary)
- B. Remove hex standoff and two (2) screws holding spring retaining plate.

WARNING: Springs under pressure!

- C. Remove Spring Retaining Plate.
- D. (09 Function only) Move Lock Bar to opposite side.
- E. Carefully remove springs and bottom rack.
- F. Remove top rack.
- G. Rotate lever to opposite side.
- H. Engage bottom rack on the opposite side as shown.
- I. Engage top rack on the opposite side as shown.
- J. Install springs on bottom rack. **WARNING:** Springs under pressure!
- K. Replace Spring Retaining Plate, hex standoff and screws.
- L. Replace tailpiece assembly screw.



LHR



Hex Standoff

Handing Complete