

PUSH-BUTTON KITS, OPERATIONAL SIGNAGE

Available With	564, 565, 679, 767K1, 767K2
6300 Series	✓
6200 Series	✓
6000 Series	✓
5700 Series	✓
5600 Series	✓
5500 Series	✓

PUSH-BUTTON KITS

564
INCLUDES

- ADA1019-2 wall switch
- 548 transmitter (with 9 volt battery)
- 539 receiver


565
INCLUDES

- (2) ADA1019-2 wall switches
- (2) 548 transmitters (with 9 volt batteries)
- 539 receiver


767K1
INCLUDES

- (1) 767 wall switch
- (1) 546 transmitter
- (1) 537 receiver


767K2
INCLUDES

- (2) 767 wall switches
- (2) 546 transmitters
- (1) 537 receiver

679 SIGNAGE KIT (SUPPLIED STANDARD)


(1 per switch)



(1 per switch)



(2 per operator)

RESTROOM KIT

Available With	575
6300 Series	✓
6200 Series	✓
6000 Series	✓
5800 Series (x WIM)	✓
5700 Series	✓
5600 Series	✓
5500 Series	✓


575

- Single occupancy normally locked/unlocked restrooms

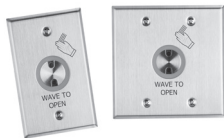
ACCESSORIES

LOW ENERGY POWER OPERATORS

WAVE-TO-OPEN SWITCHES

Available With	673, 674, 700, 704, 767, 768
6300 Series	✓
6200 Series	✓
6000 Series	✓
5800 Series	✓
5700 Series	✓
5600 Series	✓
5500 Series	✓

WAVE-TO-OPEN WALL SWITCHES



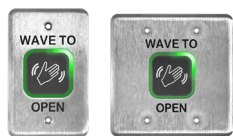
700

- Infrared technology
- Single gang and double gang packaged together
- Sensor requires movement for activation
- Variable relay – hold time from 0 – 35 seconds
- Range 0" to 4"
- Dimensions:
3" W x 4-3/4" H (single);
4-1/2" W x 4-1/2" H (double)



704

- Infrared technology
- Narrow gang
- Sensor requires movement for activation
- Variable relay - hold time from 0-35 seconds
- Range 0" to 4"
- Durable stainless steel body holds up in moist environments



673

674

- Microwave technology
- Stainless steel
- Adjustable sensing zone from 4"-24"
- Adjustable hold time (1/2 to 30 seconds)
- 673: Single gang
- 674: Double gang
- Surface mounting boxes:
– 685: Single
– 686: Double



767

768

- Battery operated
- Infrared sensors
- 767: Single gang
- 768: Double gang
- Stainless steel with vandal resistant face plate
- Sensor detection range up to 4"
- Field-configurable bi-color (red/green) LED status indicators
- Selectable time delay 1 to 10 seconds

NOTES:

- Metal enclosures can reduce signal strength and cause an intermittent or reduced signal reception when using a radio frequency transmitter. To ensure proper function, do not use metal conduit housing.
- Bright light like direct sunlight can interfere with the Wave To Open signal.