

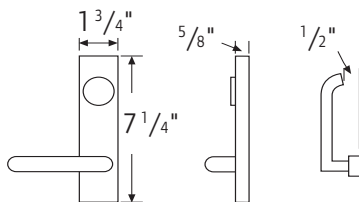
# 1790 Rim touchbar device

The 1790 rim device is typically used in applications where maintenance is a concern because the rim device has fewer parts and pieces than current exit devices. The result is less maintenance and adjustment. The streamlined design has no openings for chains, reducing the risk for code infringements and offering increased building security by eliminating the possibility of tampering and forced entry through the use of coat hangers and other tools. The 1790 may also be used to retrofit a 2090 series crossbar device.



Length	Minimum door size (non-EL)	Minimum door size (EL)
30"	24"	28 1/2"
36"	30"	34 1/2"
42"	36"	40 1/2"
48"	42"	46 1/2"

- Lock/unlock capability
- ADA accessible
- Lever designs
  - Dane
  - Sutro
  - Quantum



Lever projection: Quantum = 3"  
 Sutro = 2 7/8"  
 Dane = 2 7/8"

Key locks or unlocks trim. Lever retracts latchbolt when trim is unlocked. Dane, Quantum and Sutro levers return to within 1/2" of door.

## Specifications

Hand:	Non handed.
Functions:	See trim selection chart on this page.
Finishes:	US28, DC13, DC35, US3, US10, US26, US26D. Centercase and end cap are powder-coated black only.
Strikes:	TD35 strike supplied standard, see page 11 for other rim strikes available.
Latchbolt:	1" thickness, 3/4" throw.
Dogging feature:	Hex key dogging standard, except EL where must use hold back feature on outside cylinder.
Cylinder:	Rim, night latch (NL) or hold back (HB) available (field selectable).
Sizes:	30", 36", 42", and 48".
Doors:	1 3/4" thick metal or wood, specify if wood door.**
Projections:	3 3/8" in neutral position, 2 3/8" in dogged position. Pushbar height is 2 1/2".
Stile:	1 3/4" minimum.
Electric functions:	EL - electric latch retraction, ED - electric dogging (both EL and ED require PS914-2RS minimum power supply). RX - request to exit switch, monitors pushpad SPTD switch.
Fasteners:	All machine screw mounting. Device mounting fasteners are concealed, latch fasteners are exposed to egress side.
End caps:	Black powder-coated metal end caps.
ANSI:	Carry UL label and approved for life safety. Certified ANSI A156.3 grade 1 standards.
Mullions:	Removable mullions are available for pairs of doors, see page 19.

Model	Trim package	Type	Function
1790	No outside trim	4	01
1791	Pull only (9970)	4	02
1792	Cylinder only	4	03/04* or 08/09*
1794	Pull (9970) and cylinder	4	02/03/04

\* Requires use of 179L

\*\*9970 is for use on HM and Alum doors only. Not for use on wood doors.

# Strikes

## 1690 Concealed vertical rod device



**PB48**  
Top strike for 1690 device. Packed with three 0.050" thick shims. 1 1/16" x 1 1/16" x 7/16" (H x W x D)

## 1790 Rim device



**STK45**  
Strike for inactive leaf, pair of doors with 1790 device. 3 1/4" x 1 5/16" x 1/4" (H x W x D)



**TD35**  
Strike for single doors, 1790 device. Includes 1/8" shim. 3" x 2" x 1/2" (H x W x D)

## (F) 19-R Rim devices



**F570**  
Standard strike. 2 5/8" x 1 1/4" x 13/16" (H x W x D)



**F490**  
Optional strike. 2 5/8" x 1 1/4" x 7/8" (H x W x D)



**565**  
Adjustable surface mounted for use with blade or applied stops. Mounts flush for 1/2" stop height.



**571/571A**  
Used on inactive leaf for device on active leaf of pair of doors without removable mullion. 571 keeps 2 5/16" backset. 571A is trimmer and projects less into opening.

## (F) 19-V Surface vertical rod devices



**3788**  
Top strike for 19-V.



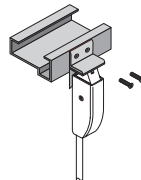
**2130**  
19-V bottom strike for grouting into concrete or masonry floors.



**4155**  
19-V optional bottom strike.



**2126A**  
19-V optional bottom strike.

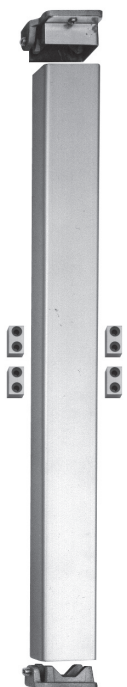


**4215**  
Angle bracket for 19-V devices flush transom applications. Does not require elimination of latch retention feature.



**Extension rods**  
Extension rods are available in 12", 24" and 36" lengths in all finishes. Both ends tapped and all-thread included as connector.

# Accessories



F-4023 Shown

## Removable mullion

- Removable mullions are easily removed and reinstalled for full width access
- Increased security and tighter closure
- Minimizes door warp age and sag
- Regulates the traffic flow in-and-out
- Rim devices are used on both leaves, attaining a perfect symmetrical opening
- Mullion assembly consists of a mullion, top and bottom fittings and mounting package
- Mullion can be cut on the job for doors under stock lengths

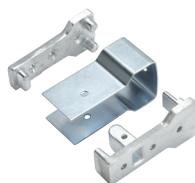
## 2923, (F)4023, (F)KR4023 Mullion

These steel mullions can be used with the 19-R and F-19-R devices. Soffit adapters are available for the 2923 and 4023 mullions. The F4023 and F-KR4023 fire-rated mullions also include four stabilizer blocks as required for labeled installations. Strikes are not included with mullion and should be specified with the 19-R or F-19-R device, see page 11 for strike information. KR mullions require 1 1/4" mortise cylinder with standard "A" cam. The mullion fittings are made from ductile iron. The (F)4023 and (F)KR4023 are 2" wide and 3" deep. The 2923 is 1 1/2" wide and 2 1/2" deep. Furnished in prime coat.

## Mullions



RM 170



Mullion brackets



525 Mullion stabilizer for RM170

## RM 170 Removable mullion

RM 170 for use with 1790 series. Comes complete with adjustable mortised strikes and security clips. Compatible with doors 7' to 10' and for use with stiles as narrow as 1 3/4". Made of aluminum, available in anodized aluminum or bronze finishes. Mullion is 3 1/2" deep, 1" wide on door side, and 1 5/8" at the widest point.

## Mullion strikes



### STK170

Adjustable mortise strikes (pair).

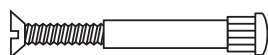
- 2 7/8" tall
- 1 3/4" wide
- 1" thick

## Sex bolts

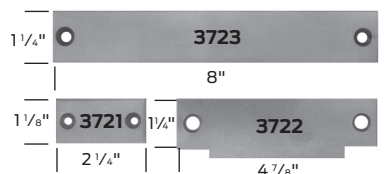
Sex bolts are available for 1 3/4" door thickness. Screws to fit are available in 3/4" and 2" lengths to cover a wide range of door thicknesses.

2729 (#10-24 thread)

4122 (1/4"-20 thread)



## Filler plates



### 3721/3722/3723

Steel filler plates

- 3721 Cylindrical lock frontfiller
- 3722 ASA strike filler - set no. SC for 161 cutout
- 3723 Mortise lock front filler
- 3722 ASA strike filler - set no. SM for 86 cutout

# How to order

## 1690/1790

		EL	1690	EO	36"	US28	RL*
<b>HH</b>	Hurricane device*						
<b>RX</b>	Request to exit switch						
<b>EL</b>	Electric latch retraction						
<b>ED</b>	Electric dogging						
<b>1690</b>	See model numbers on page 6						
<b>1790</b>	See model numbers on page 7						
<b>EO</b>	Exit only						
<b>DT</b>	Dummy trim						
<b>NL-HBOP</b>	Cylinder assembly - optional pull						
<b>NL-HBP</b>	Cylinder assembly with 9970						
<b>30"</b>	30" (optional)						
<b>36"</b>	36" (standard)						
<b>42"</b>	42" (optional)						
<b>48"</b>	48" (optional)						
<b>US28</b>	<b>DC35</b>	<b>US10</b>	<b>US26D</b>				
<b>DC13</b>	<b>US3</b>	<b>US26</b>					
<b>1690 Only</b>							
<b>HEX</b>	Standard bottom latch						
<b>RL</b>	Rod bottom latch						
<b>PL</b>	Pullman lottomlatch						
<b>ES</b>	Top latch for use with electric strike						
<b>LESS RODS</b>	Less rods (retrofit of 1990 device)						
<b>LBR</b>	Less bottom rods						

\*Applies to 1690 Only