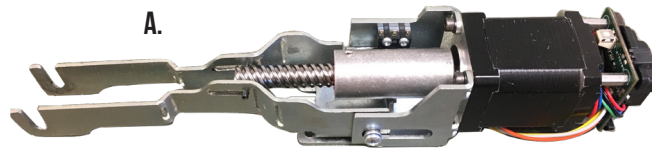


MLRK1-

INSERT INSTRUCTIONS

The Command Access MLRK1 is a field installable motorized latch-retraction kit for:

- MLRK1-TS1 - Town Steel 1100 series devices
- MLRK1-USCAN - USCAN2100 series devices
- MLRK1-LSDA2 - IDN LSDA 9200 series devices



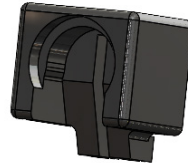
B.



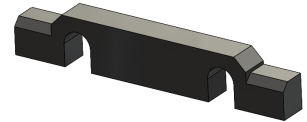
C.



D.



E.



KIT INCLUDES

- A. 1- MOTOR MOUNT W/MM4S
- B. 2- 40002 - 8/32" X 1/4" PHILLIPS HEAD SCREW
- C. 1- 50944 - MOLEX PIGTAIL
- D. 1- 50864 - SPRING SPACER
- E. 1- 52236 - MOTOR STABILIZING BRACKET

TOOLS REQUIRED

- CORDLESS DRILL OR PHILLIPS SCREWDRIVER

SPECIFICATIONS

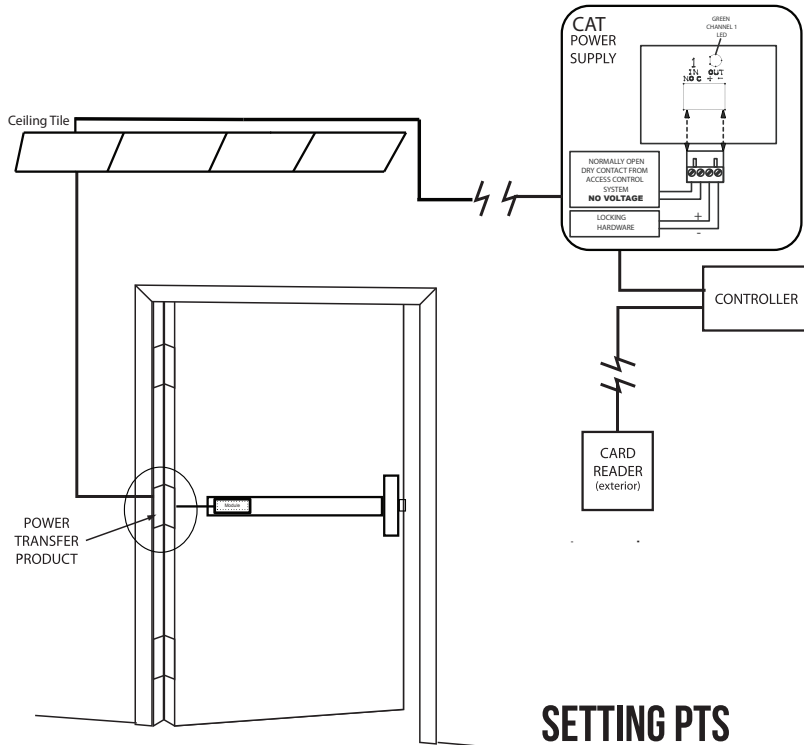
- INPUT VOLTAGE: 24VDC +/- 10%
- AVERAGE LOW TORQUE LATCH RETRACTION CURRENT: 900 MA
- AVERAGE HIGH TORQUE LATCH RETRACTION CURRENT: 2A
- AVERAGE HOLDING CURRENT: 215 MA
- WIRE GAUGE: MINIMUM 18 GAUGE
- DIRECT WIRE RUN - NO RELAYS OR ACCESS CONTROL UNITS IN-BETWEEN POWER SUPPLY & MODULE

RECOMMENDED POWER SUPPLIES: USE A POWER LIMITED CLASS 2 POWER SUPPLY

ALL COMMAND ACCESS EXIT DEVICES & FIELD INSTALLABLE KITS HAVE BEEN THOROUGHLY CYCLE TESTED WITH COMMAND ACCESS POWER SUPPLIES AT OUR FACTORY. IF YOU PLAN ON USING A NON-COMMAND POWER SUPPLY IT MUST BE A FILTERED & REGULATED LINEAR POWER SUPPLY.

OPTIONAL BUILT-IN REX

- SPDT - RATED .5A @24V
- GREEN= COMMON (C)
- BLUE = NORMALLY OPEN (NO)
- GREY = NORMALLY CLOSED (NC)



SCAN ME

MM4S SWITCHES

1	OFF	STANDARD TORQUE
	ON	HIGH TORQUE
2	ON	PTS PROGRAMMING ON
	OFF	PTS PROGRAMMING OFF

SETTING PTS

IMPORTANT INFO

MAKE SURE TO SET PTS BEFORE FINISHING INSTALLATION

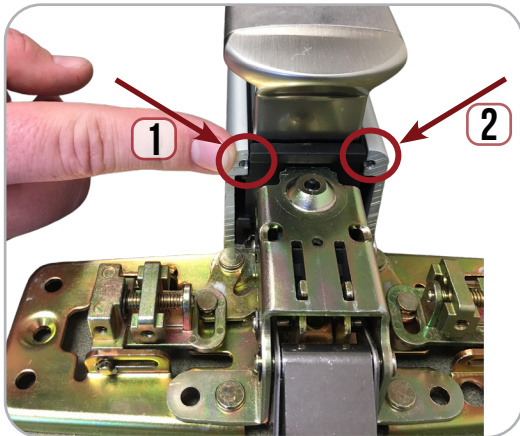
- STEP 1-** SELECT YOUR PREFERRED TORQUE MODE (SHIPS IN STANDARD TORQUE) PRESS THE DEVICE PUSH PAD TO THE DESIRED SETTING. (RECOMMEND TO FULLY DEPRESS AND RELEASE 5%, GIVING THE DEVICE ROOM FOR CHANGING DOOR CONDITIONS.)
- STEP 2-** WHILE DEPRESSING THE PUSH PAD, APPLY POWER. (I.E. PRESENTING THE CREDENTIAL TO THE READER).
- STEP 3-** CONTINUE TO KEEP PAD DEPRESSED, THE DEVICE WILL BEEP 6 TIMES. AFTER THE BEEPS HAVE STOPPED, RELEASE THE PAD AND NOW THE ADJUSTMENT IS COMPLETE. IF NOT TO YOUR LIKING REPEAT THE 3 STEPS.
- STEP 4-** ONCE YOU FOUND THE CORRECT LOCATION, TURN PTS SWITCH TO OFF POSITION.

TROUBLESHOOTING & DIAGNOSTICS

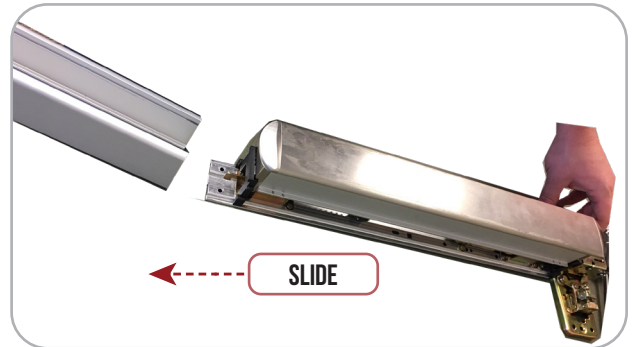
BEEPS	EXPLANATION	SOLUTION
2 BEEPS	OVER VOLTAGE	> 30V UNIT WILL SHUT DOWN. CHECK VOLTAGE & ADJUST TO 24 V.
3 BEEPS	UNDER VOLTAGE	< 20V UNIT WILL SHUT DOWN. CHECK VOLTAGE & ADJUST TO 24 V.
4 BEEPS	FAILED SENSOR	VERIFY ALL 3 SENSOR WIRES ARE INSTALLED CORRECTLY. REPLACE SENSOR IF PROBLEM PERSISTS BY CONTACTING OFFICE.
5 BEEPS	RETRACTION OR DOGGING FAILURE	<p>AFTER 1ST FAIL: 5 BEEPS THEN IMMEDIATELY ATTEMPTS TO RETRACT AGAIN.</p> <p>AFTER 2ND FAIL: 5 BEEPS WITH PAUSE IN-BETWEEN FOR 30 SECONDS THEN DEVICE ATTEMPTS TO RETRACT AGAIN.</p> <p>AFTER 3RD FAIL: 5 BEEPS EVERY 7 MINUTES, DEVICE WILL NOT ATTEMPT TO RETRACT.</p> <p style="text-align: center;">TO RESET: DEPRESS BAR FOR 5 SECONDS AT ANY TIME.</p>
6 BEEPS	PUSH TO SET	DEVICE IS RECORDING IT'S NEW POSITION AND POWER MODE AFTER THE 6TH BEEP.

INSTALLATION INSTRUCTIONS

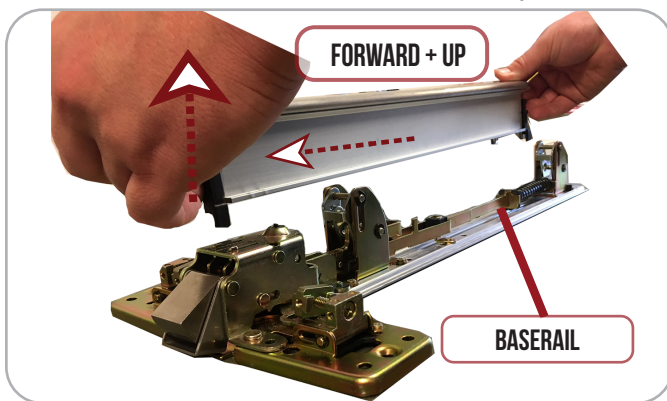
1. Remove **Head Cover & (2) Screws** securing housing to baserail.



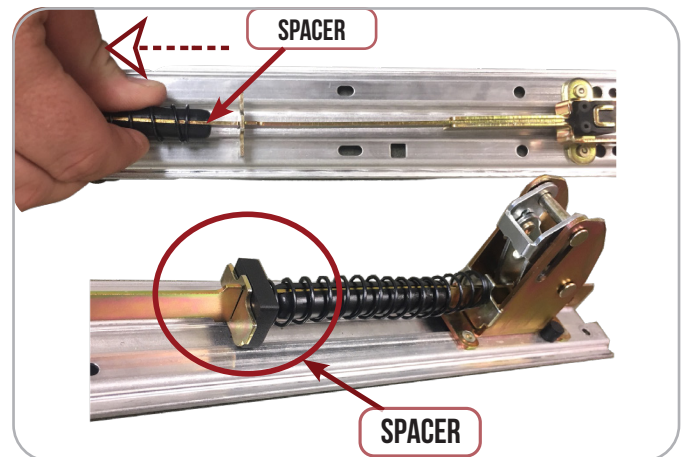
2. **Slide off** Housing from Baserail.



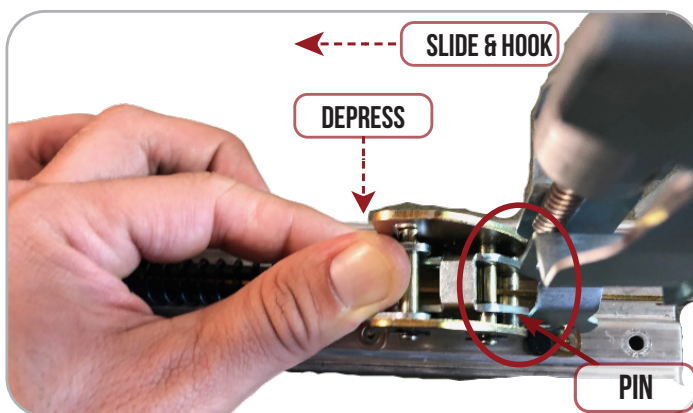
3. Remove **Pushpad** by pulling forward then up to reveal baserail assembly.



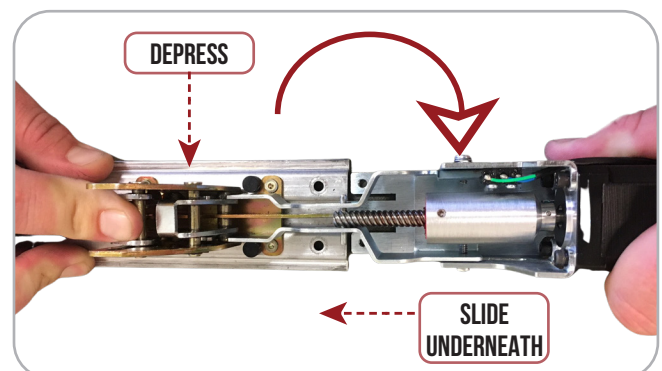
4. **Install Spacer** onto connecting rod in front of the back activating bracket to increase the return spring tension. Make sure **Spacer** is facing the correct direction.



5. The Motor Kit **attaching hooks** facing towards the back activating bracket at a 90 degree angle. **Depress** activating backing & hook onto bottom pin.

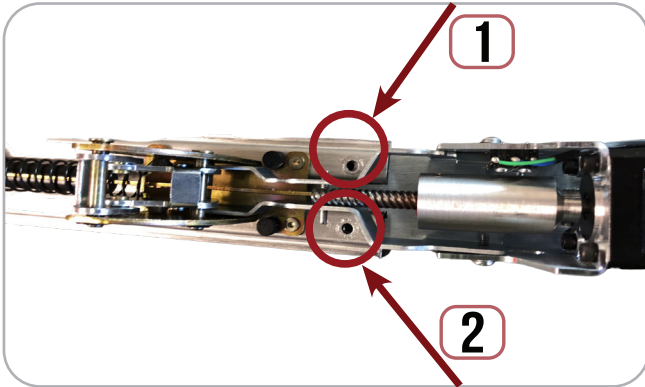


6. Once hooked onto **PIN**, bring the motor down & **slid the mounting bracket underneath** the baserail.

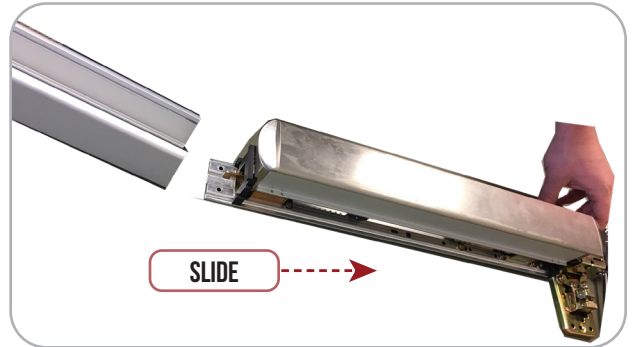


INSTALLATION INSTRUCTIONS

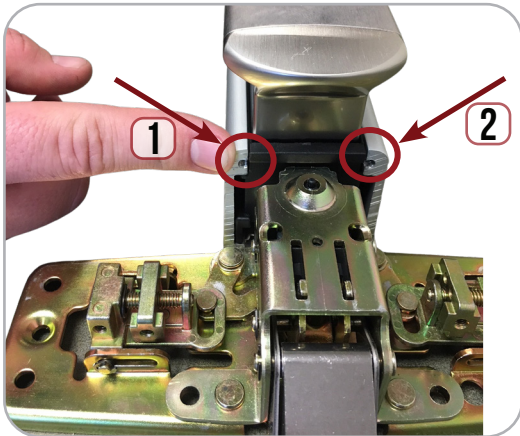
7. Install (2) Screws from above to secure the motor assembly to the baserail.



8. Re-install Pushpad, then **Slide** housing back into place. Be careful of pinching REX/Motor wires.



9. Replace mounting bracket & Re-install (2) screws.



10. Set the "Push to Set Adjustment" following the steps below.



SETTING PUSH TO SET (PTS)

****IMPORTANT INFO****

MAKE SURE TO SET PTS BEFORE FINISHING INSTALLATION

MM4S SWITCHES		
1	OFF	STANDARD TORQUE
	ON	HIGH TORQUE
2	ON	PTS PROGRAMMING ON
	OFF	PTS PROGRAMMING OFF

- STEP 1-** SELECT YOUR PREFERRED TORQUE MODE (SHIPS IN STANDARD TORQUE) PRESS THE DEVICE PUSH PAD TO THE DESIRED SETTING. (RECOMMEND TO FULLY DEPRESS AND RELEASE 5%, GIVING THE DEVICE ROOM FOR CHANGING DOOR CONDITIONS.)
- STEP 2-** WHILE DEPRESSING THE PUSH PAD, APPLY POWER. (I.E. PRESENTING THE CREDENTIAL TO THE READER).
- STEP 3-** CONTINUE TO KEEP PAD DEPRESSED, THE DEVICE WILL BEEP 6 TIMES. AFTER THE BEEPS HAVE STOPPED, RELEASE THE PAD AND NOW THE ADJUSTMENT IS COMPLETE. IF NOT TO YOUR LIKING REPEAT THE 3 STEPS.
- STEP 4-** ONCE YOU FOUND THE CORRECT LOCATION, TURN PTS SWITCH TO OFF POSITION.