



Table of Contents

Page 1

WELCOME PAGE

Page 2

-PANIC EXIT DEVICE T391-04

Page 3

-SURFACE VERTICAL ROD EXIT DEVICE T392-04

-THREE-POINT LATCHING EXIT DEVICE T393-04

Page 4

-PANIC EXIT DEVICE T341-04

Page 5

-PANIC EXIT DEVICE SURFACE VERTICAL ROD T342-04

Page 6

-RIM PANIC EXIT DEVICE T300

Page 7

-RIM PANIC EXIT DEVICE T395

Page 8

-CROSSBAR EXIT DEVICES T290

Page 9

-LATCH CASES T291

Page 10

-EMERGENCY TOUCH PAD T240

-DOOR SEQUENCE SELECTOR FOR DOUBLE DOORS T210

Page 11

-MOUNTING KIT FOR GLASS DOORS - CROSSBAR SERIES T378-04, T380-04, T376-04

-MOUNTING KIT FOR GLASS DOORS - RIM PANIC EXIT DEVICE SERIES T371-04, T373-04, T376-04

Page 12

-TEMPERED GLASS DOOR LOCK T180

Page 13

-ELECTRIC STRIKE DOOR-STANDARD T705

-DOOR SEQUENCE SELECTOR FOR DOUBLE DOORS T730

Page 14

-OUTSIDE LEVER T800M

-PASSAGE LEVER TRIM T850M

-PULL HANDLE TRIM T870

Page 15

-STANDARD DOOR CLOSER R402

-HEAVY DUTY DOOR CLOSER R403

Page 16

-OUTSIDE LEVER TRIM FOR PANIC DEVICE T840M

-DOOR HANDLE HOLE-COVER I800

Page 17

-CONCEALED VERTICAL ROD EXIT DEVICE T352

Page 18

-THREE POINT LOCK T503

-FLUSHBOLT T511

Page 19

-SMART LOCK R750



gaab.locks



@gaablocks



gaab locks



Find Us Youtube



Evolution in Locks

Product Lines

Quality & History

Since 1965 we have contributed to the hardware industry with our knowledge, expertise & underlying goal of constant development that guarantees quality & recognition of our products; which have been approved by American & International standards.



[gaab.locks](https://www.gaab.locks)



[@gaablocks](https://www.instagram.com/gaablocks)



[gaab locks](https://www.linkedin.com/company/gaablocks)



[Find Us Youtube](https://www.youtube.com/gaablocks)



PANIC EXIT DEVICE T391-04



T391

- ▶ 1 point latching
- ▶ UL listed (UL 305)
- ▶ Modular & Reversible
- ▶ For single or double doors
- ▶ Suitable for metal, wood & aluminum doors
- ▶ Suitable for heavy traffic doors
- ▶ Strike (roller type)
- ▶ Extruded aluminum - made rail case and touch bar
- ▶ High performance epoxy paint finish with high strength and durability
- ▶ Optional outside trim
- ▶ Shipped with dogging / undogging system
- ▶ Total nominal length of the device:
 - Standard length: 33" (850mm)
 - Minimum length: 16" (400mm)
- ▶ Suitable for doors up to 8' (2440mm) height - 4' (1220 mm) width
- ▶ Max weight 440 lbs (200kgs)
- ▶ Dogging Function



Item	Description
T391-04	Rim Panic Exit Device-Gray
T391-01	Rim Panic Exit Device-Black



SURFACE VERTICAL ROD EXIT DEVICE T392-04



INCLUDED LATCH CASES SET



T392



- ▶ 2 point latching
- ▶ UL listed (UL 305)
- ▶ Modular & Reversible
- ▶ For single or double doors
- ▶ Suitable for metal, wood and aluminum doors
- ▶ Suitable for heavy traffic doors
- ▶ Suitable for parallel frames
- ▶ Strike (roller type)
- ▶ Front & Back casing made out of Zamak
- ▶ Extruded aluminum - made rail case and touch bar
- ▶ High performance epoxy paint finish with high strength & durability
- ▶ Optional outside trim
- ▶ Shipped with dogging / undogging system
- ▶ Total nominal length of the device:
- ▶ Standard length: 33" (850mm) Minimum length: 16" (400mm)
- ▶ Suitable for doors up to 8' (2440mm) height 4'(1220mm) width
- ▶ Max weight 440 lbs (200kgs)
- ▶ Dogging Function



Item

Description

T392-04

Surface Vertical Rod Exit Device

THREE-POINT LATCHING EXIT DEVICE T393-04



INCLUDED LATCH CASES SET



T393



- ▶ 3 point latching
- ▶ UL listed (UL 305)
- ▶ Modular & Reversible
- ▶ For single or double doors
- ▶ Suitable for metal, wood & aluminum doors
- ▶ Suitable for heavy traffic doors
- ▶ Suitable for parallel frames
- ▶ Strike (roller type)
- ▶ Zamak - made front and back covers
- ▶ Extruded aluminum - made rail case and touch bar
- ▶ High performance epoxy paint finish with high strength & durability
- ▶ Optional outside trim
- ▶ Shipped with dogging / undogging system
- ▶ Total nominal length of the device:
- ▶ Standard length: 33" (850mm) Minimum length: 16" (400mm)
- ▶ Suitable for doors up to 8' (2440mm) height 4'(1220mm) width
- ▶ Max weight 440 lbs (200kgs)
- ▶ Dogging Function



Item

Description

T393-04

Three-Point Latching Exit Device



PANIC EXIT DEVICE T341-04

T341



- ▶ Push style Bar
- ▶ Rim type
- ▶ 1 point latching
- ▶ UL Listed, 3 hours Fire Rated. ANSI Grade 1
- ▶ Steel
- ▶ Measures: Length 42" - Width 6" - Height 2.5"
- ▶ Standard - Could be customized
- ▶ Non-handed for LEFT HAND or RIGHT HAND doors
- ▶ Master key option available
- ▶ Accessories: fixing screws, end cover & striker
- ▶ Modular & Reversible



▶ Stainless Steel Material



Item	Description
T341-04	Panic Exit Device-Gray
T341-04S	Panic Exit Device - Stainless Steel



TRUST IN GAAB FOR A SAFER EXIT!

gaablocks.com



PANIC EXIT DEVICE SURFACE VERTICAL ROD T342-04

T342



- ▶ Push style Bar
- ▶ Rim type
- ▶ 2 point latching
- ▶ UL Listed, 3 hours Fire Rated. ANSI Grade 1
- ▶ Steel
- ▶ Measures: Length 42" - Width 6" - Height 2.5"
- ▶ Standard - Could be customized
- ▶ Non-handed for LEFT HAND or RIGHT HAND doors
- ▶ Master key system available
- ▶ Accessories: fixing screws, end cover and striker
- ▶ Modular and Reversible

▶ Stainless Steel Material

Item	Description
T342-04	Panic Exit Device Surface Vertical - Gray
T342-04S	Panic Exit Device Surface Vertical Rod - Stainless steel





RIM PANIC EXIT DEVICE



T300

- ▶ Approved under UNE EN-1125 standards (European)
- ▶ Approved with 200,000 opening cycles
- ▶ Modular & Reversible
- ▶ For single or double doors add (T291 series)
- ▶ Three-point latching option for single doors
- ▶ Suitable for metal, wood, aluminum & glass doors (kit for glass sold separately)
- ▶ Suitable for heavy traffic doors
- ▶ Zamak - made front and back covers
- ▶ Extruded aluminum - made rail case and touch bar
- ▶ High performance epoxy paint finish with high strength and durability
- ▶ Optional outside trim
- ▶ Shipped with dogging / undogging system
- ▶ Total nominal length of the device:
 - Standard length: 33" (850mm)
 - Minimum length: 16" (400mm)
- ▶ Suitable for doors up to 8' (2440mm) height - 4' (1220 mm) width
- ▶ Max weight 440 lbs (200kgs)
- ▶ Doggie Function



Item	Description
T300-04	Rim Panic Exit Device-Grey



RIM PANIC EXIT DEVICE



T395

- ▶ Approved under UNE EN-1125/1634 standards (European)
- ▶ Approved with 200,000 opening cycles
- ▶ Modular & Reversible
- ▶ Suitable for metal, wood, aluminum & glass doors (mounting kit for glass sold separately)
- ▶ Suitable for heavy traffic doors
- ▶ Zamak - made front and back covers
- ▶ Extruded aluminum - made rail case and touch bar
- ▶ High performance epoxy paint finish with high strength & durability
- ▶ Optional outside trim
- ▶ Shipped with dogging / undogging system
- ▶ Total nominal length of the device:
Standard length: 33" (850mm)
Minimum length: 16" (400mm)
- ▶ Suitable for doors up to 8' (2440mm) height
4' (1220 mm) width - Max weight 440 lbs (200kgs)



Item

Description

T395-04

Rim Panic Exit Device Fire Rated-Grey



TRUST IN GAAB FOR A SAFER EXIT!

gaablocks.com



CROSSBAR EXIT DEVICE



T290

- Approved under UNE EN-1125 standards (European)
- Approved with 200,000 opening cycles
- Modular & Reversible
- Quick & easy installation
- Suitable for metal, wood, aluminum & glass doors (kit sold separately)
- High performance epoxy paint finish with high strength & durability
- Optional outside trim
- Optional switch for electromagnetic latch opening
- Crossbar tube: standard diameter: 1" (25.4 mm)
- Optional length 39" (1000 mm) and 47" (1200 mm)



Item

Description

T290-04B	Push Lever Arms-Grey
T005-09	47" (1200mm) Crossbar Tube-Grey
T005-04	39" (1000mm) Crossbar Tube-Grey

CROSSBAR EXIT DEVICE-FIRE RATED



T295

- Approved under UNE EN-1125/1634 standards (European)
- Approved with 200,000 opening cycles
- Modular & Reversible
- Quick and easy installation
- Suitable for metal, wood, aluminum & glass doors (glass kit sold separately)
- High performance epoxy paint finish with high strength and durability
- Optional outside trim
- Crossbar tube: standard diameter: 1" (25.4 mm)
- Optional length 39" 1000 mm) and 47" (1200 mm)



Item

Description

T295-04	Push Lever Arms Fire Rated-Grey
T005-09	47" (1200mm) Crossbar Tube-Grey
T005-04	39" (1000mm) Crossbar Tube-Grey

LATCH CASES + VERTICAL ROD



LATCH CASES



T291



- ▶ Approved under UNE EN-1125 standards (European)
- ▶ Suitable for single & double doors
- ▶ Suitable for T300 series & T290 series
- ▶ Suitable for doors up to 8' (2440 mm) height - 4' (1220 mm) width
- ▶ Max weight 440 lbs (200 kgs)
- ▶ Suitable for steel, wood, aluminum & glass doors
- ▶ High performance epoxy paint finish with high strength and durability
- ▶ Mounting kit for glass sold separately



Item	Description
T291-04B	Latch Cases Set-Grey
T291-05	Vertical Rod-Grey



TRUST IN GAAB FOR A SAFER EXIT!

gaablocks.com

EMERGENCY TOUCH PAD



T240

- ▶ Provides a quick, safe & effective exit
- ▶ Suitable for metal, wood, aluminum & glass doors (glass bed kit sold separately)
- ▶ Optional outside trim
- ▶ Quick and easy installation
- ▶ High performance epoxy paint finish with high strength and durability
- ▶ Nylon push pad
- ▶ Reversible



Item	Description
------	-------------

T240-04	Emergency Exit Touch Pad-Green
T240-05	Emergency Exit Touch Pad-Gray

DOOR SEQUENCE SELECTOR FOR DOUBLE DOORS



T210

- ▶ Suitable for double doors with or without top flap
- ▶ Suitable for metal, wood & aluminum doors with side flap
- ▶ Suitable for panic exit devices
- ▶ Selector arm & support made of cold rolled sheet 4mm thick
- ▶ Blue zinc plated finish
- ▶ Nylon wheels
- ▶ Its use with door closers is mandatory
- ▶ Mandatory use for fire doors according to International standard EN-1158
- ▶ Suitable for doors up to 8' (2440 mm) height 4' (1220 mm) width
- ▶ Maximum weight 220 Lbs. (100 kgs)
- ▶ Reversible



Item	Description
------	-------------

T210-03	Door Sequence Selector For Double Doors
---------	---



MOUNTING KIT FOR GLASS DOORS - CROSSBAR SERIES



- ▶ Zamak - made front and back covers
- ▶ Suitable for single & double leaf doors
- ▶ Modular & reversible
- ▶ High performance epoxy paint finish with high strength & durability
- ▶ Protection joints between lock and door



Item	Description
T378-04	Mounting Kit For Single Leaf Door With Access-Grey
T380-04	Mounting Kit For Single Leaf Door With Access-Grey
T376-04	Mounting Plate For Glass Frame Door-Grey

MOUNTING KIT FOR GLASS DOORS - RIM PANIC EXIT DEVICES SERIES



- ▶ Zamak - made front & back covers
- ▶ Suitable for single & double leaf doors
- ▶ Modular & reversible
- ▶ High performance epoxy paint finish with high strength & durability
- ▶ Protection joints between lock and door



Item	Description
T371-04	Mounting Kit For Single Leaf Door With Access - Grey
T373-04	Mounting Kit For Double Leaf Door With Access - Grey
T376-04	Mounting Plate For Glass Frame Door-Grey



TEMPERED GLASS DOOR LOCK



T180

- ▶ Injected aluminum - made front & back case
- ▶ Easy installation, no cutting glass required
- ▶ Non-handed
- ▶ High performance epoxy paint finish with high strength & durability
- ▶ Suitable for tempered glass door 3/8" and 1/2" (10 mm & 12 mm thickness)
- ▶ Fully adjustable

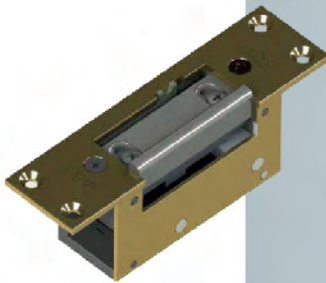


Item	Description
T180-00	Tempered Glass Door Lock - Standard Grey
T180-04	Tempered Glass Door Lock - Black
T180-05	Tempered Glass Door Lock - Yellow
T180-06	Tempered Glass Door Lock - Red
T180-07	Tempered Glass Door Lock - Pink
T180-08	Tempered Glass Door Lock - Blue
T180-09	Tempered Glass Door Lock - White
T180-11	Tempered Glass Door Lock - Green



ELECTRIC STRIKE DOOR-STANDARD

T705



- ▶ Zamak-made body, lever and latch-bolt
- ▶ 3/32" (2.5mm) thickness steel front
- ▶ AC 12V input voltage / 850 mA
- ▶ Permanent Unlock Option
- ▶ Equipped wire output for electrical installation
- ▶ Reversible



Item

Description

T705-00
T707-00

Electric Strike Door
Electric Strike Door With Permanent Unlock Option

DOOR SEQUENCE SELECTOR FOR DOUBLE DOORS

T730



- ▶ Zamak-made body, lever and latch-bolt
- ▶ 3/32" (2.5 mm) thickness steel front
- ▶ Direct power supply
- ▶ Injected nylon cover
- ▶ AC 12V input voltage / 850 mA
- ▶ Suitable for panic exit devices
- ▶ Reversible



Item

Description

T730-01

Electric Strike Door For Panic Exit Devices-Grey



OUTSIDE LEVER



T800M

- ▶ Suitable for metal, wood, aluminum & glass doors
- ▶ Quick & easy installation
- ▶ Suitable for T240, T391, T392, T393, T395, T290, T295 & T300 Panic Bar Series.
- ▶ High performance epoxy paint finish with high strength & durability
- ▶ Optional cylinder with ordinary or flat key
- ▶ Optional same combination key
- ▶ Optional passage style trim
- ▶ Standard key N° 71 for rekeying
- ▶ Recommended in doors with a thickness of 1.5" and 2.55"
- ▶ In case of glass doors, a specific support must be used (not included)



Item

Description

T800M14
T800M11

Ordinary Key - Grey
Classroom - Balck Matte

PASSAGE LEVER TRIM



T850M

- ▶ Suitable for metal, wood, aluminum & glass doors
- ▶ Quick & easy installation
- ▶ Suitable for T240, T391, T392, T393, T395, T290, T295 & T300 Panic Bar Series.
- ▶ 4 High performance epoxy paint finish with high strength & durability
- ▶ Injected Nylon cover
- ▶ Recommended to be used in doors with a thickness of 1.5" & 2.55"
(In case of glass doors, a specific support must be used, not included)



Item

Description

T850M04

Eco Outside Lever-Grey

PULL HANDLE TRIM



T870

- ▶ Suitable for metal, wood, aluminum & glass doors
- ▶ Quick & easy installation
- ▶ Suitable for T240, T391, T392, T393, T395, T290, T295 & T300 Panic Bar Series.
- ▶ Standard key N° 71 for rekeying
- ▶ Recommended to be used in doors with a thickness of 1.5" & 2.55"
(In case of glass doors, a specific support must be used, not included)



Item

Description

T870-14

Outside Pull Handle With Key - Grey



STANDARD DOOR CLOSER



R402

- ▶ UL 10C Certified 90 min
- ▶ Meet with AnSI 156.4 Grade 1
- ▶ 2 million opening cycles
- ▶ ADA: 5016 with barrier free (BF) function for elderly / handicapped
- ▶ Multi size, adjustable spring force from 1 to 6
- ▶ Rack & pinion mechanism contained in a high tensile precision, cast aluminum housing needle bearing
- ▶ Applicable to door weight between 15 to 150 KG
- ▶ Optional delay action & slim full plastic cover
- ▶ Universal application (Non-handed for standard, top jamb, or parallel arm installation)
- ▶ Included Components:
 - Bracket
 - Standard arm
 - Plastic inclined cover



Item	Description
R402	Standard Door Closer - Fire Rated

HEAVY DUTY DOOR CLOSER



R403

- ▶ Heavy duty door closer, for commercial doors
- ▶ UL Certified 10C 90min fire resistance
- ▶ AnSI GRADE1, 2 million cycles in endurance
- ▶ Precise cast iron body & forged steel arm, hold open arm optional
- ▶ Adjustable closing & latching speed
- ▶ Adjustable back-check, delay action optional - precision heavy duty rack (Piston) & pinion gear, needle bearing
- ▶ Decorative plastic cover include
- ▶ Stainless - steel cover optional
- ▶ ADA approve, barrier Free, lower opening resistance for the handicapped / elderly



Item	Description
R403	Heavy Duty Door Closer - Fire Rated



OUTSIDE LEVER TRIM FOR PANIC DEVICE

T840M



- ▶ Quick and easy installation
- ▶ High performance epoxy paint finish with high strength and durability
- ▶ Schlage keyway, clutch free wheeling
- ▶ Stainless steel finish alternative
- ▶ 3 Application categories: Passage, Storeroom & Classroom
- ▶ Suitable for T341 & T342



Item

Description

T840M14	Outside Classroom Trim Stainless Steel
T840M15	Outside Classroom Trim
T840M16	Outside Storeroom Trim
T840M17	Outside Passage Trim

DOOR HANDLE HOLE-COVER

I800



- ▶ Suitable for OUTSIDE TRIMS T800 Series
- ▶ Suitable for panic exit devices
- ▶ Accurately to cover the standard door hole 2 1/8"
- ▶ Available separately

Item

Description

I800	Hole Cover Grey
I800-05	Hole Cover Black Matte
I800-06	Rear Supplement Panic Device

CONCEALED VERTICAL ROD EXIT DEVICE



CONCEALED VERTICAL ROD EXIT DEVICE T352

NEW
DEVELOPMENT

T352



- ▶ Active push bar & back bar made of extruded aluminum
end back bar & caps made of injection aluminum
- ▶ Top and bottom strikes made of deep drawn sheet steel. Metal Bolts of 9/16" diameter and 5/8" max projection easily adjustable
- ▶ Three options length device for 36", 42" & 48". Maximum cutting 6"
- ▶ Suitable for doors up to 96" height with device mounted at 40" centerline above finished floor. For higher doors an extension or threaded rod for up to 120' is required (Available separately)
- ▶ Suitable for 1 3/4" & 2" doors thickness
- ▶ Suitable for doors with up to 3/16" style wall thickness & minimum 2 1/2" of style width is required.
- ▶ Non-handed
- ▶ Projection: 3" when fully projected, 2" when dogged
Standard dogging with 3/16" hex key
- ▶ Suitable for use with any standard 1" to 1-1/4" length, 1-5/32 diameter mortise cylinder with MS® cam in conjunction with the escutcheon (Available separately)
- ▶ May come with switch or without switch.



Item

Description

T352-04

Concealed Vertical Rod Exit Device:
Black Matte, Gray, Black Anodized & Dark Bronze Anodized.



TRUST IN GAAB FOR A SAFER EXIT!

gaablocks.com

THREE POINT LOCK FLUSHBOLT



THREE POINT LOCK- T503

NEW
DEVELOPMENT



T503

- ▶ The bolt length provides maximum security for a single - leaf door
- ▶ Suitable for sliding narrow style aluminum, steel & wood (for 1 point latch only) doors in commercial, industrial & institutional buildings
- ▶ A solid hook bolt resists the sliding or revolving doors opening
- ▶ The blocking system, located in the center of the lock, provides high security against forcing attempts
- ▶ Utilizes a laminated steel short bolt, activated by a pivot mechanism to security
- ▶ 360° turn key or thumb turn projects or retracts the counterbalanced bolt. Key can be removed only when bolt is locked or unlocked position
- ▶ Lock supports any standard 1" (25.4 mm) length 1-5/32" (29.4 mm) diameter mortise cylinder. Lock supports cylinder from either or both sides
- ▶ Backset: 1-1/8" (28.6 mm), 1 1/4" (31.7mm) & 1-1/2" (38.1 mm)
- ▶ Up and bottom fixing holes are mortised and made by carbon steel sheet
- ▶ Up and bottom fixing bolts are made by laminated steel, the diameter is 9/16" & a maximum projection of 5/8" easily manual adjustable
- ▶ Suitable for doors up to 96" height mounted at 40" centerline above floor. For higher doors an extension or threaded rod up to 20" is required (Available separately)
- ▶ One or three locking points depending on the place to be fitted



Item	Description
T503	Three Point Lock

FLUSHBOLT - T511



T511

- ▶ Manual lock for hinged doors & sliding doors
- ▶ Suitable for single & double door
- ▶ Easy access
- ▶ Can be fitted on the edge or on the front or the door
- ▶ Suitable for aluminum & metal doors
- ▶ Rod extension compatible



Item	Description
T511	Flushbolt: Gray, Black Matte, White & Dark Bronze.



TRUST IN GAAB FOR A SAFER EXIT!

gaablocks.com



SMART LOCK R750

R750

- ▲ Suitable for wood, aluminum or metal doors
- ▲ Suitable for doors from 13.8" to 21.7" (350 to 550mm) of width
- ▲ Measures 9.213" x 2.52" x 0.709" (234 x 64 x 18mm)
- ▲ Functions: Fingerprint, digital pad & encrypted key
- ▲ Bluetooth commanded by the TLock App (QR)
- ▲ Emergency access under frontal panel key
- ▲ Password or 6 - 2 digits
- ▲ 5v emergency power supply with micro usb
- ▲ Card reading distance 0.2" - 0.8" (5 - 20mm)
- ▲ Fingerprint recognition time: Less than 0.5 sec.
- ▲ Card type: IC ml
- ▲ 4.8V Low battery indicator
- ▲ Emergency dynamic consumption: about 150mA
- ▲ Supply voltage: 6V
- ▲ Power supply: 4 pcs AAA batteries
- ▲ Applicable temperature^o-33.8°F to 140°F



MORTISE LOCK



Item	Description
R750	Smart Lock



Evolution in Locks

Commitment

We have a strong commitment to the public, to continue providing outstanding quality panic devices at competitive rates. Offering versatile engineering & unique products.



[gaab.locks](https://www.gaab.locks)



[@gaablocks](https://www.instagram.com/gaablocks)



[gaab locks](https://www.linkedin.com/company/gaablocks)



[Find Us Youtube](https://www.youtube.com/channel/UC...)