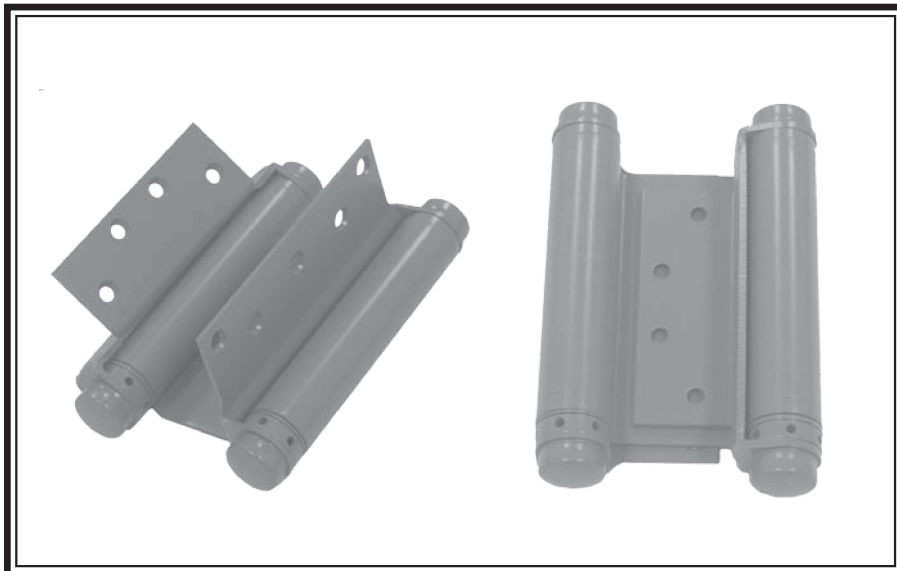




FULL MORTISE DOUBLE ACTING SPRING HINGE

STANDARD WEIGHT
6" x 4 1/2"

C7



DA-81 (ANSI K81151)
Steel - Polished and Plated or Bonderized and Prime Coated for Painting.

- Double acting spring hinge is designed for 1-3/4" stock hollow metal or wood doors.
- Door flange is designed to fit standard 4 1/2" x 4 1/2" template mortise.
- Permits doors to open in either direction and automatically return to the closed position.
- See template for exact dimensions.
- No hanging strip is required on frame. Jamb flange is surface applied to jamb.
- All hinges are ANSI template

GENERAL PRODUCT INFORMATION: PBB, Inc. template hinges are manufactured to close tolerances and meet all specifications and requirements set by the American National Standards Institute (ANSI).

HINGE SWAGING: A standard swaging of our standard weight full mortise hinge when closed to parallel position provides a 1/16" clearance between leaves.

MATERIAL GAUGE:

Jamb Flange - .100 ± .005 for 6"
Door Flange - .134 ± .005 for 4 1/2"

Barrel Diameter: 1.180

OTHER SPECIFICATIONS:

Height of hinge:
Jamb Flange: 6.00 for 6"
Door Flange: 4.50 for 4 1/2"
Width:
Jamb Flange: 1.750 for 6"
Door Flange: 1.650 for 4 1/2"

DA-81 Series Maximum Door Sizes and Weights						
Series	2 Hinges		3 Hinges		Door Thick-ness	Door Height
	Door Weight Lbs.	Door Width	Door Weight Lbs.	Door Width		
DA-81 6 x 4.5	75	2'-8"	107	3'-0"	1 3/4"	7'-0"

DA - 81 Series Maximum Door Sizes and Weights

It is advisable to use three hinges on a door. The center hinge should be installed as close as possible to the top hinge for maximum support. Hinge capacity decreases as door height decreases. Request template from factory for door and frame clearance required. Non Handed
DO NOT USE ON DOORS WITH HINGE EDGE BEVELED.
NOTE: Wind conditions, excessive air pressure, use of gasket for smoke or sound protection may prevent door from latching.

DA-81 STANDARD SCREW SIZE
FHMS - 12-24 x 1/2"
FHWS - 12 x 1 1/2"

PACKAGING INFORMATION:

One hinge per plastic bag, 2 hinges and 1 screw pack per unit carton.
8 unit carton or 24 hinges per master shipping carton.
1 screw pack includes all machine screws (28), and 1/2 wood screws (14). ATMS & AWS also available.