



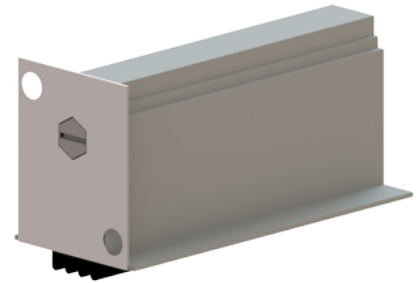
PRODUCT SPECIFICATIONS

For more information visit www.hagerco.com

743S

Automatic Door Bottom Mortise Application End
Caps Furnished

Applications



PRODUCT SPECIFICATIONS

Category:
J, H

Fasteners:
#8 x 1-1/4" Pan head sheet metal screws furnished with surface
mount types #6 x 5/8" Pan head sheet metal screws furnished with
mortise types

Finishes:
MIL

Fire Rating:
UL Listed

Insert Codes:
N

Inserts:
Neoprene, EPDM or TPE

H Length:
49" to 60"

Max Drop:
3/4" (19.1 mm)

Notes:
Furnished exact length as stated
Available in lengths of 12" to 60"
Lengths 16" - 29" may be trimmed for fitting (2" maximum)
Lengths 30" - 60" may be trimmed for fitting (5" maximum)
Furnished with end cover and strike plates
DBA/GLD end caps available on MIL and CLR finish

Size:
1 3/4" x 1 13/16" (45 mm x 45 mm)

Warranty:
Five-Year Warranty