



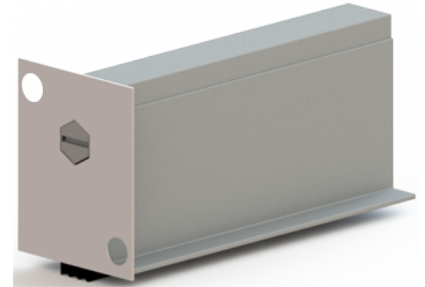
PRODUCT SPECIFICATIONS

For more information visit www.hagerco.com

730S

Automatic Door Bottom Mortise Application End
Caps Furnished

Applications



PRODUCT SPECIFICATIONS

Fasteners:

#8 x 1-1/4" pan head sheet metal screws furnished with surface mount types #6 x 5/8" Pan head sheet metal screws furnished with mortise types and surface mount types

Finishes:

MIL

Fire Rating:

UL Listed

Inserts:

Neoprene, EPDM or TPE Silicone

Max Drop:

3/4" (19.1 mm)

Notes:

Furnished exact length as stated.
Available in lengths of 12" to 60"
Lengths 16"-29" may be trimmed for fitting (2" maximum)
Lengths 30" - 60" may be trimmed for fitting (5" maximum)
Furnished with mortise types and surface mount types
DBA/GLD end caps available

Size:

1-1/4" x 1-3/4" (32 mm x 44 mm)

Warranty:

Five-Year Warranty