

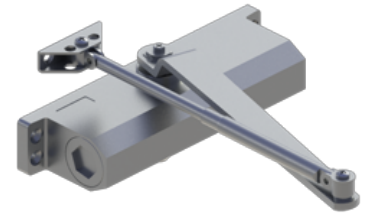


5400 Series Adj. Sizes 2-5

Grade 2 Standard Duty Surface Door Closer -
Adjustable Sizes 2-5

Applications

Ideal for light duty commercial applications



PRODUCT SPECIFICATIONS

Arm:

Tri-Pack - Regular, parallel, and top jamb arm mount - standard
15% power adjustment in standard arm for regular and top jamb mount

Box Quantity:

1

Case Quantity:

6

Certifications:

BHMA Certified ANSI A156.4, sizes 2-5 adjustable
UL/cUL Listed for up to 3 hours
UL10C Positive Pressure Rated
UL10B Neutral Pressure Rated
Five-year warranty
EPD

Cover:

Plastic cover optional

Door Thickness:

1-3/4" (44 mm) - standard
1-3/8" - 2-1/4" (36 mm - 57 mm) - optional

Fasteners:

Self-reaming self-tapping wood and machine screws
Sex nuts and bolts

Finishes:

ALM and DBZ are standard.
BRZ, BLK, and GOL are available at extended lead times with minimum order quantities.

Handing:

Non-handed

Material:

Aluminum alloy

Maximum Door Weight:

80 lbs

Notes:

To maximize hinge life and assist in achieving ADA compliance, Hager recommends the use of anti-friction or ball bearing hinges with our door closer products
Standard package contains standard screw pack, 5900 parallel arm bracket, and 5902 SNB screw pack for 1-3/4" (44 mm) door
Precision machined, heat treated steel piston
Triple heat treated steel spindle
The recommended temperatures for prolonged closer use is between -40° F (-42° C) and 150° F (66° C)

Springs:

Double heat-treated, steel-tempered springs

Valves:

Sweep and latching valves- standard
Backcheck valve- optional
All valves are staked

Warranty:

Five year