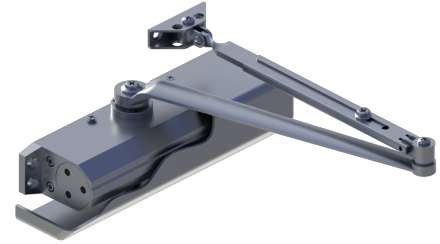


## 5300 Series

### Grade 1 Heavy Duty Door Closer

#### Applications

Grade 1 heavy duty surface door closer adjustable sizes 1-6  
Ideal for schools, hospitals, and other high-use environments



#### PRODUCT SPECIFICATIONS

##### Arms & Brackets:

Tri-Pack - regular, top jamb, and parallel arms - Standard  
15% power adjustment in standard arm for regular and top jamb mount

##### Box Quantity:

1

##### Case Quantity:

6

##### Certifications:

BHMA Certified ANSI A156.4, adjustable sizes 1-6  
ADA compliant ANSI A117.1 Accessibility Code  
UL/cUL Listed for up to 3 hours  
UL10C Positive Pressure Rated  
UL10B Neutral Pressure Rated  
5300 Door Closer EPD

##### Cover:

Full plastic cover and pinion cap

##### Door Thickness:

1-3/4" (44 mm)- standard  
1-3/8" - 2-1/4" (36 mm - 57 mm) - optional

##### Fasteners:

Self-reaming, self-tapping wood and machine screws  
Sex nuts and bolts

##### Finishes:

ALM, BLK, BRZ, DBZ, GOL  
Rust inhibiting primer - Standard

##### Handing:

Non-handed

##### Material:

Aluminum Alloy

##### Maximum Door Weight:

250 lbs

##### Notes:

To maximize hinge life and assist in achieving ADA compliance, Hager recommends the use of anti-friction or ball bearing hinges with our door closer products.  
The recommended temperatures for prolonged closer use is between -40° F (-42° C) and 150° F (66° C)  
Any certified BHMA/ANSI A156.4 door closer, regardless of manufacturer, that is installed and adjusted based on ADA or other reduced opening force requirements may not provide sufficient power to reliably close and latch a door  
If arms are ordered separately, there will be a significant difference in price than if purchased with a closer as a complete assembly.  
See adders for more information (add the list price of the option to the list price of the closer and take standard discounts).

Accessories may not be available in all finishes. Please contact Hager for availability and lead time.

##### Optional Arms:

Tri-Pack Arm (Regular, Top Jamb and Parallel with Parallel Arm Bracket)- Standard  
Hold Open Arm (HO) - 5910  
Pull Side Stop Arm (PSS) - 5926  
Pull Side Hold Open Stop Arm (PSHOS) - 5927  
Extra Heavy Duty Arm - (HD) - 5911  
Extra Heavy Duty Stop Arm ( HDS) - 5907  
Extra Heavy Duty Hold Open Stop Arm (HDHOS) - 5906  
Extra Heavy Duty Hold Open Arm (HDHO) - 5912  
Extra Heavy Duty Cushion Stop Arm (HDCS) - 5957  
Extra Heavy Duty Hold Open Cushion Stop Arm (HDHOCs) - 5956  
Hold Open Stop Track Arm (HOTA)  
Non-Hold Open Stop Track Arm (NHOTA)  
Double Egress Hold Open Track Arm (DEHOTA)  
Double Egress Non-Hold Open Track Arm (DENHOTA)

##### Optional Brackets:

Hold open parallel arm bracket  
Extra clearance parallel arm bracket

##### Springs:

One piece seamless steel spring tube  
Double heat-treated, steel-tempered springs  
Precision-machined, heat-treated steel piston

##### Use:

Ideal for schools, hospitals, and other high-use environments

##### Valves:

Adjustable backcheck, sweep, and latching valves- standard  
Delayed action valve - optional  
All valves are staked

##### Warranty:

Lifetime warranty