



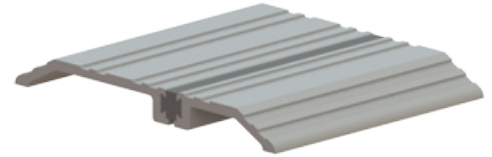
PRODUCT SPECIFICATIONS

For more information visit www.hagerco.com

421S

Threshold - Saddle Thermal Barrier

Applications



PRODUCT SPECIFICATIONS

Certifications:

Handicap Accessibility

Fasteners:

#10 x 1-1/2" sheet metal screws, other screw types and anchors available upon request

Finishes:

MIL, DBA, GLD

Fire Rating:

UL Listed

H Height:

1/2" (13 mm)

Material:

Aluminum

Notes:

MIL finish thresholds are supplied with zinc plated screws
Color anodized thresholds are supplied with screws plated to match
High strength thermal barrier is permanently bonded in place to block the transfer of heat or cold. To provide a seal, used in conjunction with a door bottom, sweep, shoe, or bumper strip.

Options:

Available with Sure-Step non-slip abrasive coating

Specifications:

per linear foot

Warranty:

Five-Year Warranty

H Width:

5" (127 mm)