



# Imazing®



## IM27

START YOUR ENGINE

### ATTENTION

Do not attempt to place (or use) the equipment before you become familiar with the entire operating instructions. Keep the instructions for future use.

Failure to observe or inappropriate implementation of these instructions may cause personal injury or injury to others or may result in damage to equipment or workmanship. This device must not be used by children, people with reduced mental capabilities, or persons who do not have the skills, experience or knowledge of using it. Children must be kept under surveillance to not play with the device. The device is not intended for business purposes. Other uses or alterations to the device are for use other than for the intended purpose and pose serious hazards. The manufacturer is not liable for damages caused by any use other than use for the intended purpose.

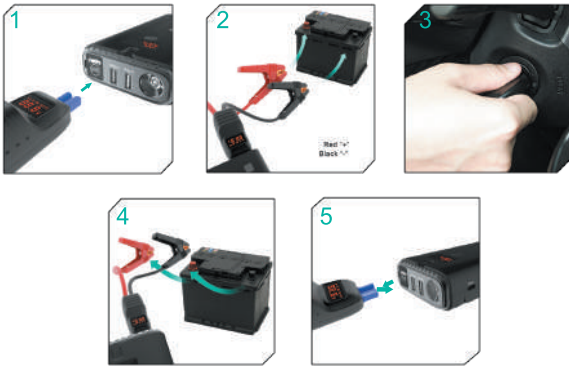
The IM27 Jump starter is a device that serves as an emergency starting source for cars with 12V battery. There is a built-in battery with short-circuit protection, reverse polarity and overvoltage, which also enables the operation of a backup battery (power bank). The jump starter has an Emergency LED flashlight and has USB ports and USB-C Port ready to power the mobile electronics.

Before the first use of the device, User confirms with his free will that he has read the General safety instructions thoroughly, fully understood his meaning and familiarized himself with all the risks.

### General Safety Instruction

- 1) This device must not be used by children
- 2) Danger of accidents and life threatening infants and children! Never leave children unattended with packaging material. There is danger of suffocation. Do not let children play with cables - risk of strangulation! Do not let children play with building and assembly parts, swallow them and suffocate., or persons who do not have the skills
- 3) The manufacturer will not be held responsible for damages caused by:
  - Incorrect connection and / or use.
  - Impact of external forces, damage to equipment and / or damage to parts of the device by mechanical impact or load.
  - Any change made to the device.
  - Using the device for purposes other than those described in this manual.
  - Subsequent damage due to unspecified and / or inappropriate use and /or faulty accumulators.
  - Humidity and / or insufficient ventilation.
  - Unauthorized opening of the device. These causes the warranty to expire.
- 4) Danger of electric shock!
  - Ensure that the unit is always in a safe place. Do not allow the device to be exposed to dripping or dripping water or other liquids. When water penetrates into electrical equipment, there is an increased risk of electric shock.
  - Ensure that all plugs and cables are protected from moisture. Never connect the appliance to the power supply with wet or damp hands.
  - Do not touch the two connection terminals at the same time while operating the device.
  - Remove all cables from the battery before attempting to drive your vehicle.
  - Do not use a faulty device. Damaged device or charging cable increases the risk of electric shock.
  - Do not disassemble or repair the unit. Have the faulty device or damaged supply cable immediately repaired or replaced by a workshop.
  - Danger of short circuit! Make sure that the two charging cable terminals not touch each other when the device is plugged into an electrical outlet. Be careful not to connect the battery terminals or poles to conductive objects (eg tools).
  - Do not use the cord to carry or pull the device.
  - Do not use the device to start a car with a dry-cell battery. Such batteries may burst and injure the person present or cause material damage.
  - Always observe the instructions in the operating instructions and all safety warnings regarding the battery and vehicle being charged when using the unit.
  - Never use the device when it is dropped or otherwise damaged.
- 5) Danger of injury!
  - Do not use the device to start a car with a dry-cell battery. Such batteries may burst and injure the person present or cause material damage.
  - Always observe the instructions in the operating instructions and all safety warnings regarding the battery and vehicle being charged when using the unit.
  - Never use the device when it is dropped or otherwise damaged.
- 6) Use only 12 V vehicles for emergency launch. Use for vehicles with a different voltage would be dangerous. Prohibition of use for other devices such as aircraft, ships.
- 7) DO NOT use this unit if the cables and their terminals are damaged. DO NOT use instead of the vehicle battery. DO NOT use as the battery charger.
- 8) Never leave this unit connected to the battery after the engine has been successfully charged.
- 9) Only use the smart cables smart cable with clamps supplied with this unit for jump starting.
- 10) Make sure that the BLUE plug of the starter cable is fully inserted into the emergency start socket. Otherwise the blue plug would melt.
- 11) Ensure that all clean battery connections and battery terminals are securely connected before emergency starting. If the battery terminals of the vehicle are dirty or corroded, the current supplied from the unit will be reduced.
- 12) DO NOT RUN more than three starts in a row behind you. The unit could be damaged by overheating. Wait two minutes before trying again. The emergency charging cable may overheat and disconnect as a safety precaution.
- 13) Disconnect the unit from the vehicle's battery within 30 seconds after the emergency start. Otherwise, it could be damaged.
- 14) DO NOT connect two cable terminals to each other.
- 15) Emergency start only when 3 to 4 indicator LED lights are on.
- 16) Let the equipment NOT be used by young and inexperienced people without supervision.
- 17) DO NOT use as a toy.
- 18) DO NOT allow the product to soak.
- 19) DO NOT place the product in water.
- 20) DO NOT use the product in an explosive atmosphere, eg in the presence of flammable liquids, gases or dust.
- 21) DO NOT REMOVE AND DO NOT disassemble the unit. Repairs to this unit may only be performed by a supplier / authorised service technician.
- 22) DO NOT expose the unit to extreme heat or fire.
- 23) Ensure that someone is always in the hearing or so close to working with batteries to help you.
- 24) When working with this unit, remove personal metal objects such as rings, bracelets, necklaces, etc.
- 25) DO NOT allow this unit to fall. If the unit is severely damaged or otherwise damaged, have it checked by a qualified technician.
- 26) DO NOT place the unit in places where the temperature may exceed 70 ° C.
- 27) Charge only at ambient temperatures in the range of 0 ° to 60 °.
- 28) Charge only with the charger supplied with this unit.
- 29) DO NOT use this unit to start the emergency vehicle when charging the internal battery.
- 30) If liquid leaks from the unit, dispose of it immediately at the appropriate recycling facility.
- 31) Under extreme conditions, liquid may escape. If liquid comes out of the unit, do not touch her with her bare hands. Immediately wash off contaminated skin with soap and water. In case of eye contact, rinse eyes with cool running water for at least 10 minutes and seek immediate medical attention.
- 32) The product contains a lithium battery. At the end of life, discard the product in accordance with local regulations.

## HOW TO USE THE JUMP STARTER



Check the level of battery of jump starter. To start the vehicle, it is necessary to have a capacity of at least 3-4 LEDs in the battery indicator (3). New jump starter must be charged before usage

1. Connect the starter cable with the battery clamps to the jump starter with the blue connector (4). The LED display on the cable begins to show red dots that circulate around the display. The starter station is ready. NOTICE: Additional smart cable LED display options are described in the "Smart cable LED display" chapter.

2. Connect the red clamp to the positive pole (+) and the black clamp to the negative terminal (-) of the battery.

3. Start the vehicle. The smart cable shows the voltage on the LED display, updated every 5 seconds.

4. Disconnect the clamps from the battery.

5. Disconnect the start-up cable from the jump starter.

### NOTICE!

You must disconnect the jump starter within 30 seconds after starting, otherwise it may be damaged. If the vehicle does not start within 6 seconds since starting of vehicle, let the jump starter cool down for 2 minutes before starting again. Do not exceed 4 attempts to start. If the start fails, the car battery is probably defective or the starter station does not have enough power to start the vehicle.

## THE F15 SMART CLAMP

F15 Smart Clamp Cable Protection Features		
Function for protection	LED Display Show	Buzzer Warning
1. Reverse Polarity Protection		One ring per second
2. Short Circuit Protection		One ring per second
3. Reverse Charging Protection		One ring per second
4. Low Voltage Protection 14.0V 0.3v		One ring per second
5. Over Voltage Protection 17.5V 0.3v		Buzzer is long
6. Overheat Protection		One ring per second

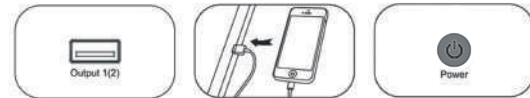


## TECHNICAL SPECIFICATIONS



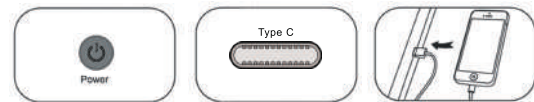
Capacity	66.6 Wh
Dimensions	191 x 88 x 36 mm
Start Peak Current	1600A-2000A
Start Current	800 A
Output/Input	USB Type-C 3A
Output USB1	5V / 3A 9V/2A 12V/1.5A
Output USB2	5V / 2.1A
Output DC	12~16V /10A
Usage Temperature	-20 C till 60 C
LED Light	light, SOS

## CHARGING VIA USB



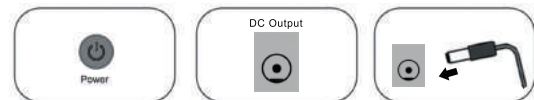
1. Plug the power cord into the USB Output 2. Press power

## TYPE C OUTPUT



1. Press power 2. Plug the TYPE C Cord

## DC OUTPUT



1. Press power 2. Plug the DC Output Cord

## USING LED FLASHLIGHT



1. Hold the Power button for 3 seconds, then press briefly to change the light mode/SOS