

CUT OUT FIT **A**

- Open back design minimizes body coverage and tan lines
- Thin strap construction is reinforced with heavy gauge rubber for durability
- Unique sleek silhouette leg lines are designed for freedom of movement

CROSSFIT **B**

- Open back design minimizes body coverage and tan lines
- Sleek, flexible straps
- Competitive cut leg

MICROFIT™ **C**

- First ever adjustable thin strap competition suit
- Loosen for warm up, tighten for fast sets
- Minimal back coverage lessens tan lines
- Sleeker cut on back and legs

MAXFIT **D**

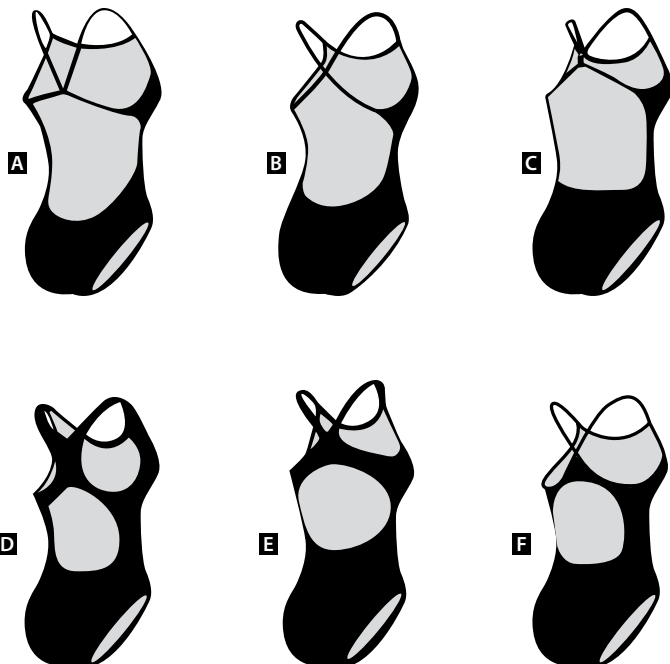
- Wide straps make it our most supportive back
- Fuller coverage
- Fits all age groups

DIMAXFIT **E**

- Unique dual colour, flat binding strap system
- Marries the features of maxback and diamondback
- Fits all age group

DIAMONDFIT **F**

- Thinner, lingerie type straps
- Thin strap binding system
- Less coverage but maintains great support and comfort



TECH BACK (SWIM TECH **A**)

- Open Back
- Wide Strap designed to free up shoulder blades
- High Leg cut to maximize freedom of movement

ERGONOMIC BACK (SWIM-PRO **B**, V-BACK **C**, ENERGY **D**, Y-BACK **E**)

- Flexible back shape
- Wide strap design provides superior breast support
- Keyhole shaped back

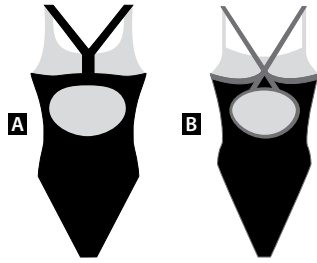
FREEDOM BACKS (LIGHT-DROP **F**, LIGHT-TECH **G**, SMOOTH **H**, GLIDE **I**)

- Stylish open back
- Features a thin strap and open, low cut back



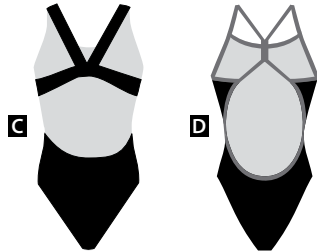
SUPER PRO BACK A

- Best selling back
- Wide straps for ultimate support and comfort
- Great for all ages, especially young swimmers



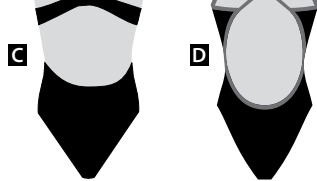
FLYBACK B

- Thin, streamlined straps
- Reinforced with overlap binding for extra durability
- Provides excellent support and freedom of motion



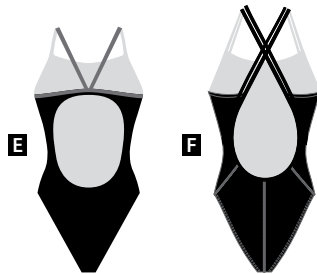
RECORDBREAKER BACK C

- Top competitive back, featured in Aquablade
- Lower back and higher cut offers freedom of motion



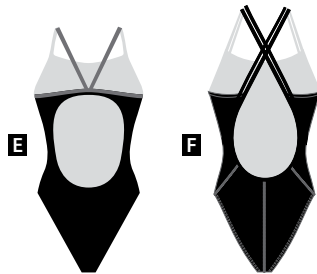
FRESHBACK D

- Fresh and Sassy cut
- Features low, open style back
- New design for 2012 line



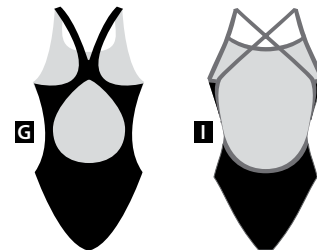
ENERGY BACK E

- Inspired by Flyback style
- Features thinner straps with a more open back
- Sits slightly higher & closer to the shoulder blade



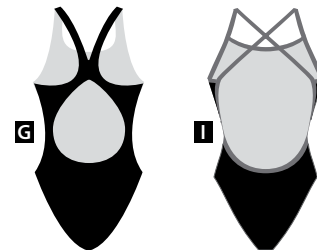
WAVE VOLT BACK + F

- Open back
- Thin, streamlined straps
- Sleek silhouette provides excellent fit



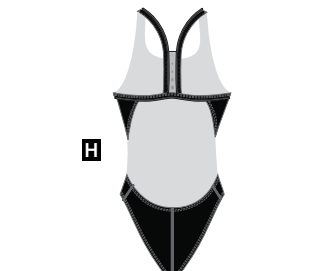
DROP BACK + G

- Flattering cut
- Thicker straps offer great support



CROSSBACK + H

- Thin, steamlined straps
- Allows for freedom of movement in back and shoulders
- Flattering cut

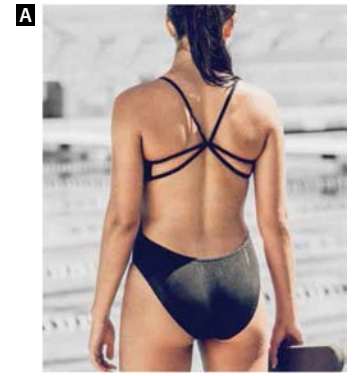


SKIMPY SKINNY STRAP + I

- Thin, steamlined straps
- Reinforced straps provide support
- Open back for minimal coverage and tan lines

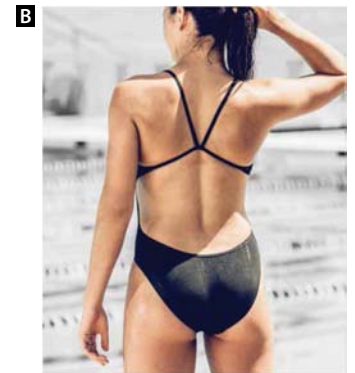
MODERN CUT OUT TANK A

- Ultra open back
- Double micro straps for enhancing large range of motion and support
- Ideal for outdoor practice or race day



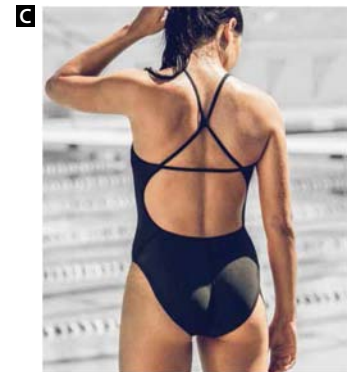
CUT OUT TANK B

- Thinnest strap design offered
- Lower cut neckline
- Open back



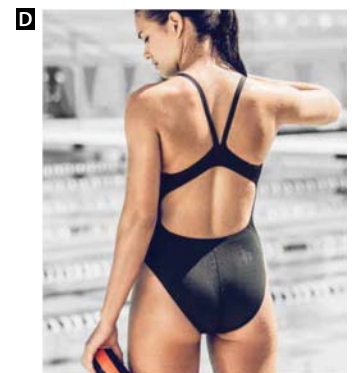
MODERN LINGERIE TANK C

- Moderate open back
- Skinny straps for comfortable fit
- Medium neckline



CLASSIC LINGERIE BACK D

- Sleek fitting suit
- High performance design combines great fit, functionality, comfort and support



SPIDER BACK TANK E

- Ultra open back
- Designed to minimize tan lines
- Micro crisscross straps for enhanced range of motion

