

# JUICE.

## TECH PACK

PLEASE REGISTER YOUR FRAME AT:  
[CHROMAGBIKES.COM/FRAMES](http://CHROMAGBIKES.COM/FRAMES)

**CONFIDENTIAL**  
FOR YOUR EYES ONLY, PLEASE DO NOT SHARE



JUICE.





24" // GRAPE ■



20" // TANG ■



We set about designing The Juice as we had more and more people asking for a high-quality, durable dirt jumper for kids, in 20" and 24" wheel sizes. We wanted to design a range especially for smaller rippers who ride at a high level and need a bike that is up to the task.

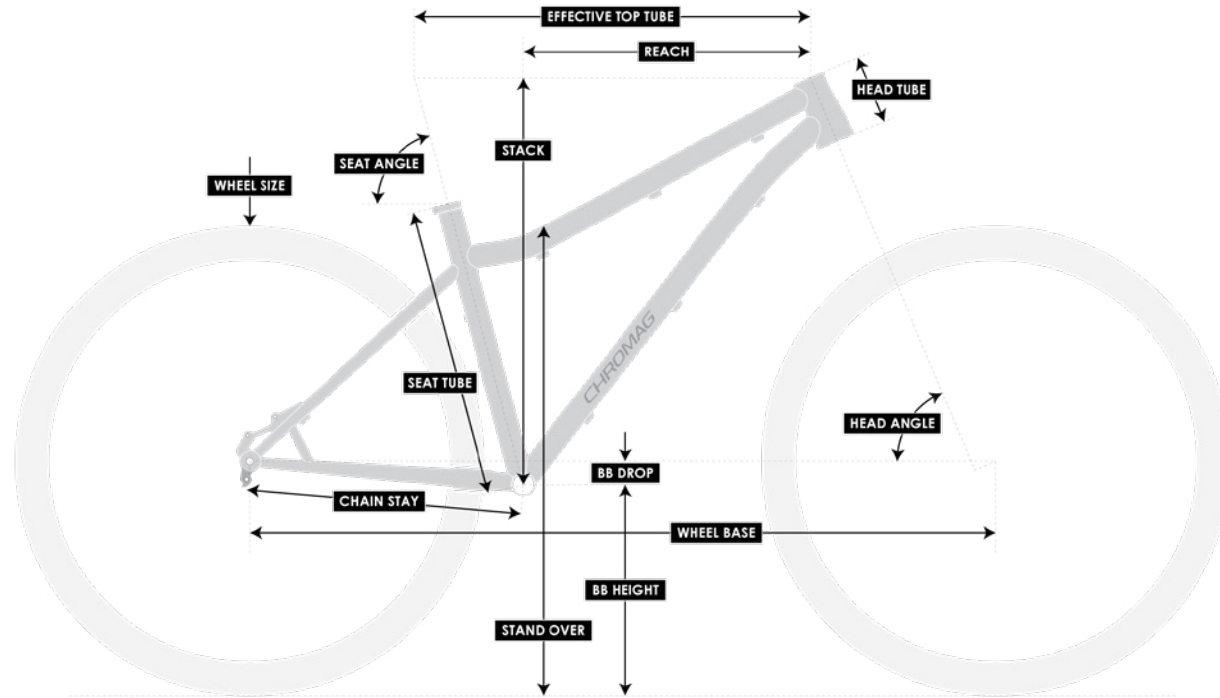
You can expect the same high quality and features that we put into the Monk, like the great ride feel of our 4130 cro-mo steel tubing, and head-to-toe Chromag components including our new kid's specific *Vanguard* handlebar.

The horizontal dropouts with integrated chain tugs are a key feature on a bike like this. Not only do they make it easy to set single-speed chain tension, but they also help to keep the rear wheel in place and aligned under pedal torque or even landing sideways (usually while learning 180's and 360's!). It's these little design hits and features that make The Juice right at home on the pump track, dirt jumps or in the skatepark.

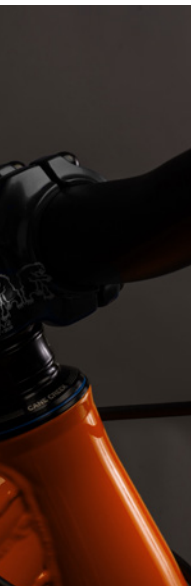
The Juice is available in 20 and 24" wheel sizes, in both Grape and Tang colourways. Read on below for all the specs, build and sizing details.

**The Juice is for all the little shredders out there who just can't wait to be big enough to get on a Monk.**





GEO	20"		24"	
	Inches	mm	Inches	mm
Typical Rider Height	3'7" - 5'5"	137 - 168cm	4'3" - 5'1"	160 - 178cm
Effective Top Tube	17.9	454	20.1	510
Seat Tube	9.4	240	10.6	270
Reach	13.1	334	14.8	375
Stack	17.4	443	19.1	484
Standover	19.6	497	21.6	548
Wheelbase	34.5	876	38.7	984
BB Height	10.4	265	11.3	287
Front Center	22.3	566	24.6	624
Chainstay	12.2	310	14.2	360
Head Tube	3.3	85	3.3	85
Head Tube Angle	67°			
Effective Seat Tube Angle	75°			





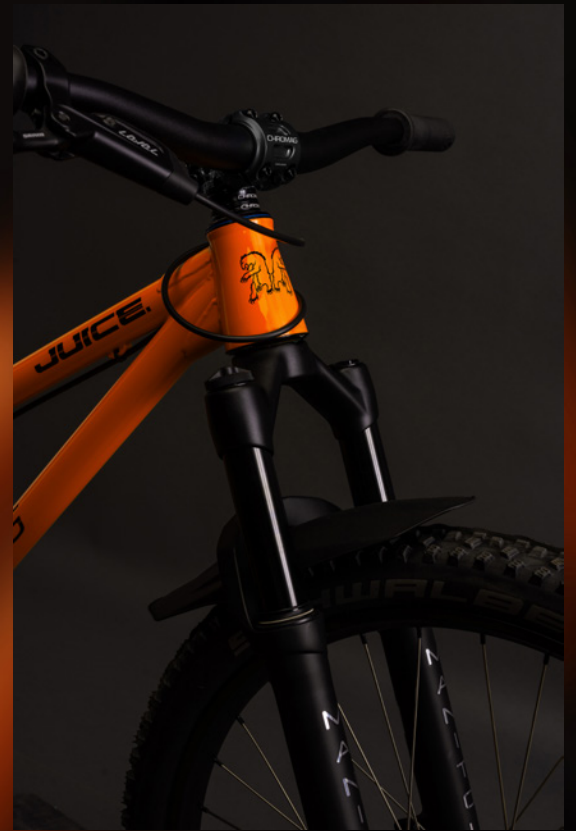


# SIZING



SPECS	20"	24"
Frame Construction	4130 Cr-Mo	
Rear Travel	No there isn't!	
Reccomended Fork Travel	100mm	
Recommended Fork Offset	40mm	
Wheel Size	20"	24"
Rear Axle	135x10mm Thru axle with nut	
BB Type	BSA 73mm Threaded	
Headset	44-56mm Semi Integrated	
Linkage	You won't find that sort of witchcraft here	
Hanger	N/A (Horizontal Dropouts)	
Seatpost Size	31.6mm	
Seatclamp Size	Integrated	
Bottle Cage Mount	Nope!	
Brake Mount	I.S.	
Origin	Taiwan	









BUILD	20"	24"
Fork	Manitou Machete 20" / 100mm / 15 x 110mm	Manitou Machete 24" / 100mm / 15 x 110mm
Shock	---	---
Stem	Chromag HiFi BSX / 31mm	Chromag HiFi BSX / 31mm
Bar	Chromag Vanguard / 720mm / 31.8mm	Chromag Vanguard / 720mm / 31.8mm
Headset	FSA Integrated / 1-1/8" x 1.5"	FSA Integrated / 1-1/8" x 1.5"
Crankset	SAMOX / 127mm / 32t	SAMOX / 127mm / 32t
Rear Brake	SRAM™ Level	SRAM™ Level
Rotor	Centerline / 140mm	Centerline / 140mm
Shifter	---	---
Cassette	16t	14t
Chain	KMC	KMC
Derailleur	---	---
BB	SAMOX / 73mm / Ø30mm	SAMOX / 73mm / Ø30mm
Wheels	Chromag Ally / D1	Chromag Ally / D1
Tires	Kenda K RAD / 20 x 2.3"	Kenda K RAD / 24 x 2.3"
Seatpost	Chromag Bassix / 300mm / 31.6mm	Chromag Bassix / 300mm / 31.6mm
Seatclamp	Integrated	Integrated
Saddle	Chromag Overture	Chromag Overture
Grips	Chromag Format	Chromag Format
Pedals	---	---





Whether you get your bike in a box, or roll it out the front door here at Chromag HQ, you can rest assured your bike has been poured over with pride, and built with the utmost attention to detail by one of our extremely talented mechanics.

If we shipped your bicycle, the only difference is that once built, we disassembled some of the parts to fit it in the box. In terms of assembly, here's what's been done, and what needs to be done if you're getting your Chromag shipped.

### What has been done:

- ✓ Chain length and tension adjusted.
- ✓ Cassette tight.
- ✓ Fork cut to length and installed.
- ✓ Headset installed and greased.
- ✓ Brake set up and bled.
- ✓ Grips tight on handlebar.
- ✓ Crankset tight, bottom bracket tight/adjusted.
- ✓ Saddle and seatpost tight.
- ✓ Seatpost greased **\*Make sure to re-grease every 6 months!**
- ✓ Tires installed and seated.

### What needs to be done:

- Inflate tires to desired pressure.
- Install handlebar and tighten to 6Nm.
- Align handlebar stem, preload headset and tighten stem pinch bolts to 8Nm. **\*Note: The arch on a Manitou fork is on the backside.**
- Install front wheel and tighten axle. Note disc mount side for direction.
- Grease pedal threads and install pedals using pedal washers.
- Adjust brakes, levers, saddle position and height for personal preference.
- Set up suspension. (Dirt jumpers are generally setup very hard!)
- Bed-in brakes. (Roll down a gentle gradient dragging one brake at a time. Avoid locking them up.)
- Go ride!*



### Notes:

*We recommend using an experienced and qualified mechanic to build your bike.*

*Things bed-in over time, be sure to perform a bolt check after your first ride. (It's good practice to perform a bolt check before every ride.)*



Now get out and ride!

+1 604 905 6667  
sales@chromagbikes.com  
chromagbikes.com