

# COLLEGE COLLECTION 2023/24

TRAVEL & TOURISM

FLORENCEROBY



# “Made to Travel!”



Accessories  
*pg 16-20*



Pero Jacket  
*pg 4*



Branding  
*pg 22*



Ancona Dress  
*pg 7*



Suits  
*pg 14-15*



Waistcoats  
*pg 10-11*



## Welcome

Florence Roby is one of the UK's leading suppliers of luxury uniforms for the Travel & Tourism industries and we are proud to celebrate over 50 years of UK design and manufacturing at it's finest. We are constantly working on new, innovative and high quality designs which are at the heart of our latest Uniform Collection. Our designs are made to flatter all shapes and sizes with high quality, durable British made fabrics that continue to feel and look great wash after wash.

## Why choose us?

- **PRICE** - WE TAILOR THE PRICE OF YOUR UNIFORM KIT TO MEET YOUR BUDGET
- **LEAD TIMES** - WE MANUFACTURE IN THE UK & EUROPE ONLY TO ENSURE SHORT LEAD TIMES
- **STAFF UNIFORMS** - THE COLLEGE RECEIVES A CREDIT EQUAL TO 10% OF THE TOTAL STUDENT SPEND. THIS CAN THEN BE USED TOWARDS FREE STAFF UNIFORMS.
- **STAFF DISCOUNTS** - WHEN A COLLEGE CHOOSES FLORENCE ROBY ALL STAFF MEMBERS RECEIVE 50% OFF FLORENCE ROBY BRANDED ITEMS FOR THE DURATION OF THE CONTRACT.
- **BRANDING** - WE HAVE AN INHOUSE EMBROIDERY AND PRINTING FACILITY TO BRAND ANY UNIFORM WITH YOUR COLLEGE LOGO
- **ONLINE ORDERING** - WE HAVE A DEDICATED COLLEGE WEBSITE LOGIN THAT ALLOWS YOUR STUDENTS TO ORDER DIRECTLY WITH US AT THE AGREED KIT PRICE.
- **ACCOUNT MANAGER** - YOU WILL RECEIVE A DEDICATED ACCOUNT MANAGER TO HANDLE ALL OF YOUR ENQUIRIES
- **STUDENT REPORTS** - WE CAN GENERATE ALL THE REPORTING YOU REQUIRE TO TRACK WHICH STUDENTS HAVE ORDERED AND WHAT YOUR CURRENT SPEND IS.

TRAVEL & TOURISM



**L81 | Pero Jacket**

Black French Navy Grey  
Size 06 - 26

**L80 | FALCONE DRESS**

Black French Navy Grey  
Size 06 - 26  
Length (41.5")

TRAVEL & TOURISM



**L80 | FALCONE DRESS**

Black French Navy Grey

Size 06 - 26

Length (41.5")



**L62 | POTENZA DRESS**

Black Grey French Navy

Size 06 - 26

Length (41.5")



L73 | ANCONA DRESS

Black Grey

Size 06-26

Length (41.5")





L02 | DASA DRESS

Black Grey Teal

Size 06 - 26

Length (41.5")



**“ The world  
is a book  
and those  
who do  
not travel  
read only  
one page. ”**

**L20 | TEANO DRESS**

Black/Grey

Size 06 - 26

Length (41.5")

## CABIN CREW

**L501 | LADIES WAISTCOAT**

Black Grey  
Size 06 - 26

**PR300 | LADIES BLOUSE**

Black Light Blue Silver  
White  
Size 06 - 30  
(other colours available on  
request)

**L28 | SLIM LEG**

Black Chocolate French  
Navy Grey Plum Teal  
Size 06 - 26  
Length (32")



CABIN CREW



G501 | GENTS WAISTCOAT

Black Grey  
Size XS - XL

PR200 | GENTS SHIRT

Black Light Blue Silver  
White  
Size 14.5" - 23"  
(other colours available on  
request)

G38 | GENTS TROUSER

Black Grey  
Size 28 - 40  
Length (32")

(a)



(b)



(c)

**L68 | ANKLE GRAZER (a)**

Black French Navy Grey  
Plum Teal  
Size 06 - 26  
Length (29")

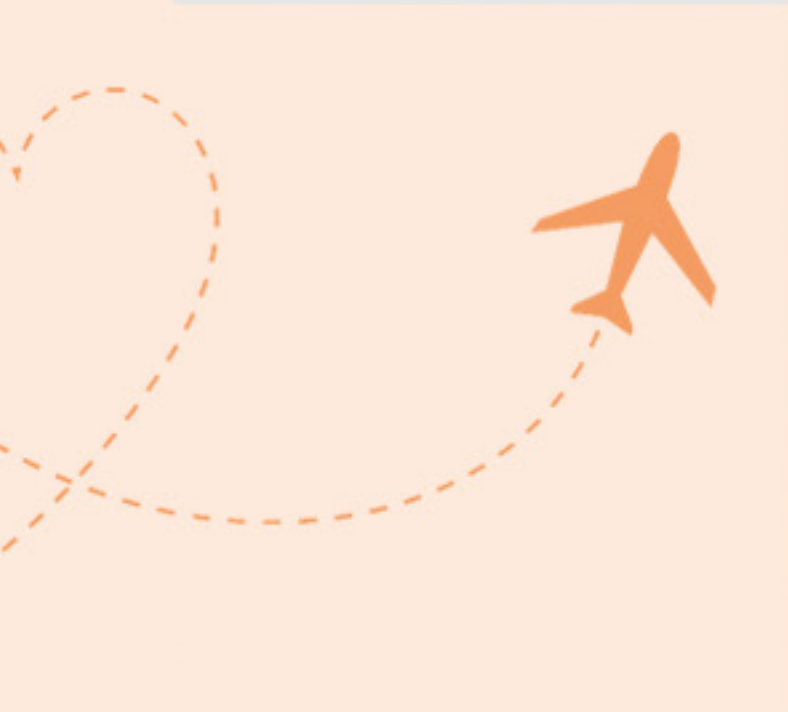
**L28 | SLIM LEG (b)**

Black Chocolate French  
Navy Grey Plum Teal  
Size 06 - 26  
Length (32")

**L48 | PARALLEL LEG (c)**

Black Fern French Navy  
Grey Plum Teal White  
Size 06 - 26  
Length (32")





**L92 | SKIRT (d)**  
Black  
Size 06 - 26  
Length (22.5")

**L56 | CULOTTES (e)**  
Black Grey Teal  
Size 06 - 26  
Length (25")

**G38 | GENTS TROUSER (f)**  
Black Grey  
Size 28 - 40  
Length (32")





**2255 | LADIES JACKET**

Black Navy

Size 04 - 26

Short Regular Long

**3344 | GENTS JACKET**

Black Navy

Size 38 - 46

Short Regular Long

**2257 | LADIES WASITCOAT**

Black Navy

Size XS - 2XL

**1295 | GENTS WAISTCOAT**

Black Navy

Size XS - XL

**2258 | LADIES SKIRT**

Black Navy

Size 04 - 24

Length (22")

**8648 | GENTS TROUSER**

Black Navy

Size 26 - 48

Short (29.5") Regular (31.5")

Long (33")

**2256 | LADIES TROUSER**

Black Navy

Size 04 - 26

Regular (29") Long (31")



## ACCESSORIES



### A09 | SCARF

Grey Lime Magenta Red  
(Blue and Orange available with  
min qty 100 students)

ACCESSORIES



PR750 | TIE

Blue Grey Lime Magenta  
Orange Red  
(other colours available on  
request)



PR300 | LADIES BLOUSE

Black Light Blue Silver White

Size 06 - 30

(other colours available on request)





PR200 | GENTS SHIRT

Black Light Blue Silver White

Size 14.5" - 23"

(other colours available on request)





**A99 | SKINNY BUCKLE BELT**  
 Blue Grey Lime  
 Magenta Orange Red  
 (min qty 100 students)



**PR154 | BIB APRON**  
 Black Blue Grey Lime  
 Magenta Orange Red  
 (many other colours)



**9987 | RAINCOAT**  
 Black Navy  
 Size Mens 36 - 50  
 Ladies 06 - 24



## Embroidery

Whether it's a sense of pride, for brand awareness, or functionality, we all understand the importance of wearing uniforms at work. Why not rubber stamp that by having your college logo embroidered onto your student or staff uniforms? All our embroidery is done in house and we do not charge any set up fees. Simply supply us with a jpeg image of your logo so we can provide a quote per item.

## Printing

Heat transfer printing is widely used as it creates a durable, heat resistant, adhesive and water-resistant design. Additionally, the colours created in the image can be bright and bold. Suitable for any graphical design we also offer metallic, glitter and glow in the dark vinyl options.

Simply email us your design ideas and we will provide a quote per item.



## ORDERING



## How to Order



The simplest way to order with Florence Roby is by official purchase order. We can accept these by email, fax or post direct from finance. Providing we have a purchase order number we will despatch all orders directly to college.



If you prefer your students to order directly with your suppliers then our mobile and tablet friendly website is the best place for them to do it. We will provide each of your courses with their own username and password. This gives your students access to their unique course kit and price.



If staff or students have any enquiries regarding special orders such as made to measure then contacting us directly to order is the best course of action. Our team can then assist with any queries and where appropriate will issue a pro forma invoice which is processed on receipt of payment.

## CONTACT US



If you require a visit or would like to see samples from our new collection please email Ben Roby.



0151 458 2128



[www.uniformcollection.com](http://www.uniformcollection.com)



[ben.robby@florenceroby.com](mailto:ben.robby@florenceroby.com)

**“ Do you want high quality  
uniforms and great  
service? We will bring  
our extensive knowledge  
in manufacturing &  
branding to your college. ”**

Florence Roby  
Overbrook Lane  
Knowsley Business Park  
Prescot  
Merseyside  
L34 9FB

web. [www.uniformcollection.com](http://www.uniformcollection.com)

email. [froby@uniformcollection.com](mailto:froby@uniformcollection.com)

#### OTHER CONTACTS

Margaret Burrows	<a href="mailto:margaret.burrows@florenceroby.com">margaret.burrows@florenceroby.com</a>
Jeanette Webster	<a href="mailto:jeanette.webster@florenceroby.com">jeanette.webster@florenceroby.com</a>
Jan Roby	<a href="mailto:jan.robby@florenceroby.com">jan.robby@florenceroby.com</a>