

# Inumbrina

© design by Dirk Wynants



ø25  
ø32  
ø38  
Floor fastening  
Concrete (wheel) base

Low table  
High table  
In combination with  
Gargantua, Pantagruel,  
Abachus & Anker

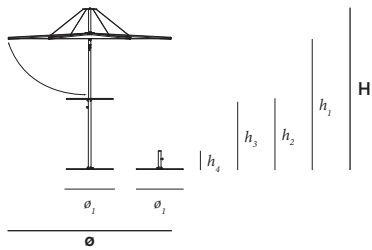
## Inumbrina

	<table border="1"> <thead> <tr> <th>Dimensions (inch)</th> <th>ø</th> <th>H</th> <th>h<sub>1</sub></th> <th>h<sub>2</sub></th> </tr> </thead> <tbody> <tr> <td>Inumbrina ø25</td> <td>98,42</td> <td>98,66</td> <td>79,84</td> <td>47,16</td> </tr> <tr> <td>Inumbrina ø32</td> <td>125,98</td> <td>98,66</td> <td>79,09</td> <td>33,22</td> </tr> <tr> <td>Inumbrina ø38</td> <td>149,60</td> <td>109,92</td> <td>83,14</td> <td>29,48</td> </tr> </tbody> </table>	Dimensions (inch)	ø	H	h <sub>1</sub>	h <sub>2</sub>	Inumbrina ø25	98,42	98,66	79,84	47,16	Inumbrina ø32	125,98	98,66	79,09	33,22	Inumbrina ø38	149,60	109,92	83,14	29,48								
Dimensions (inch)	ø	H	h <sub>1</sub>	h <sub>2</sub>																									
Inumbrina ø25	98,42	98,66	79,84	47,16																									
Inumbrina ø32	125,98	98,66	79,09	33,22																									
Inumbrina ø38	149,60	109,92	83,14	29,48																									
	<table border="1"> <thead> <tr> <th>Dimensions (inch)</th> <th>ø</th> <th>H</th> <th>h<sub>1</sub></th> <th>h<sub>2</sub></th> </tr> </thead> <tbody> <tr> <td>Inumbrina ø25 with Abachus</td> <td>98,42</td> <td>98,66</td> <td>79,84</td> <td>47,16</td> </tr> </tbody> </table>	Dimensions (inch)	ø	H	h <sub>1</sub>	h <sub>2</sub>	Inumbrina ø25 with Abachus	98,42	98,66	79,84	47,16																		
Dimensions (inch)	ø	H	h <sub>1</sub>	h <sub>2</sub>																									
Inumbrina ø25 with Abachus	98,42	98,66	79,84	47,16																									
	<table border="1"> <thead> <tr> <th>Dimensions (inch)</th> <th>ø</th> <th>H</th> <th>h<sub>1</sub></th> <th>h<sub>2</sub></th> </tr> </thead> <tbody> <tr> <td>Inumbrina ø32 with Anker</td> <td>125,98</td> <td>98,66</td> <td>79,09</td> <td>33,22</td> </tr> </tbody> </table>	Dimensions (inch)	ø	H	h <sub>1</sub>	h <sub>2</sub>	Inumbrina ø32 with Anker	125,98	98,66	79,09	33,22																		
Dimensions (inch)	ø	H	h <sub>1</sub>	h <sub>2</sub>																									
Inumbrina ø32 with Anker	125,98	98,66	79,09	33,22																									
	<table border="1"> <thead> <tr> <th>Dimensions (inch)</th> <th>ø</th> <th>H</th> <th>h<sub>1</sub></th> <th>h<sub>2</sub></th> </tr> </thead> <tbody> <tr> <td>Inumbrina ø38 with Gargantua</td> <td>149,60</td> <td>109,92</td> <td>83,14</td> <td>29,48</td> </tr> <tr> <td>Inumbrina ø38 with Pantagruel</td> <td>149,60</td> <td>109,92</td> <td>83,14</td> <td>29,48</td> </tr> </tbody> </table>	Dimensions (inch)	ø	H	h <sub>1</sub>	h <sub>2</sub>	Inumbrina ø38 with Gargantua	149,60	109,92	83,14	29,48	Inumbrina ø38 with Pantagruel	149,60	109,92	83,14	29,48													
Dimensions (inch)	ø	H	h <sub>1</sub>	h <sub>2</sub>																									
Inumbrina ø38 with Gargantua	149,60	109,92	83,14	29,48																									
Inumbrina ø38 with Pantagruel	149,60	109,92	83,14	29,48																									
	<table border="1"> <thead> <tr> <th>Dimensions (inch)</th> <th>ø</th> <th>H</th> <th>ø<sub>1</sub></th> <th>h<sub>1</sub></th> <th>h<sub>2</sub></th> <th>h<sub>3</sub></th> </tr> </thead> <tbody> <tr> <td>Inumbrina ø25 with floor fastening</td> <td>98,42</td> <td>98,66</td> <td>3,93</td> <td>79,84</td> <td>47,16</td> <td>11,02</td> </tr> <tr> <td>Inumbrina ø32 with floor fastening</td> <td>125,98</td> <td>98,66</td> <td>3,93</td> <td>79,09</td> <td>33,22</td> <td>11,02</td> </tr> <tr> <td>Inumbrina ø38 with floor fastening</td> <td>149,60</td> <td>109,92</td> <td>9,84</td> <td>83,14</td> <td>29,48</td> <td>19,29</td> </tr> </tbody> </table>	Dimensions (inch)	ø	H	ø <sub>1</sub>	h <sub>1</sub>	h <sub>2</sub>	h <sub>3</sub>	Inumbrina ø25 with floor fastening	98,42	98,66	3,93	79,84	47,16	11,02	Inumbrina ø32 with floor fastening	125,98	98,66	3,93	79,09	33,22	11,02	Inumbrina ø38 with floor fastening	149,60	109,92	9,84	83,14	29,48	19,29
Dimensions (inch)	ø	H	ø <sub>1</sub>	h <sub>1</sub>	h <sub>2</sub>	h <sub>3</sub>																							
Inumbrina ø25 with floor fastening	98,42	98,66	3,93	79,84	47,16	11,02																							
Inumbrina ø32 with floor fastening	125,98	98,66	3,93	79,09	33,22	11,02																							
Inumbrina ø38 with floor fastening	149,60	109,92	9,84	83,14	29,48	19,29																							

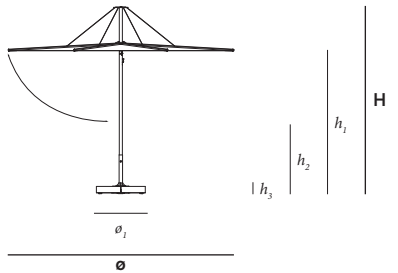
**extremis®**

The content of this document, in particular the mentioned models, is protected by copyrights and/or design rights. The present document and its content is communicated to you for information purposes only. Any partial or total reproduction or any other use without our prior written permission is strictly prohibited. This technical sheet remains subject to possible changes. **All dimensions are in inch**, unless mentioned otherwise. Extremis is not responsible for the errors in the documentation of products. All measurements are approximate and are provided for informational purposes only.

**Tech sheet**  
20170829



Dimensions (inch)	ø	H	h <sub>1</sub>	h <sub>2</sub>	h <sub>3</sub>	h <sub>4</sub>
Inumbrina ø25 with table	98,42	98,66	28,54	79,84	47,16	43,50 /
Inumbrina ø25 with parasol foot	98,42	98,66	28,54	79,84	47,16	43,50 11,41
Inumbrina ø32 with table	125,98	98,66	28,54	79,84	33,22	29,52 /
Inumbrina ø32 with parasol foot	125,98	98,66	28,54	79,84	33,22	29,52 11,41



Dimensions (inch)	ø	H	w <sub>1</sub>	h <sub>1</sub>	h <sub>2</sub>	h <sub>3</sub>
Inumbrina ø38 on concrete base	149,60	114,33	29,92	87,55	31,25	4,40
Inumbrina ø38 on concrete wheel base	149,60	117,40	32,48	90,62	34,33	7,48

BOX 1: INUMBRINA



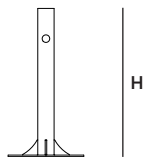
BOX 2: CONCRETE BLOCK



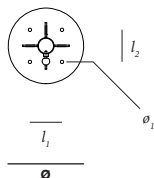
BOX 3: GALVANISED FRAME



Box dimensions (inch)		L	W	H	Qty (#)	Volume (ft <sup>3</sup> )	Gross weight (lb)	Net weight (lb)	Packaging weight (lb)
Inumbrina ø25	Box 1	105,31	10,23	11,41	1	7,06	35,58	28,35	7,23
Inumbrina ø32	Box 1	105,31	10,23	11,41	1	7,06	35,93	28,70	7,23
Inumbrina ø38	Box 1	112,99	10,23	11,41	1	7,76	43,43	36,20	7,23
Steel disc plate (parasol foot)	Box 4	30,70	30,70	1,96	1	1,05	24,25	17,64	6,61
HPL tabletop	Box 4	30,70	30,70	1,96	1	1,05	85,98	79,37	6,61
Concrete base	Box 2	14,96	14,96	3,93	4	2,11	261,90	258,38	3,52
Concrete wheel base	Box 2	14,96	14,96	3,93	4	2,11	261,90	258,38	3,52
	Box 3	31,49	31,49	1,96	1	1,05	16,97	16,09	0,88
	<b>total:</b>				<b>3,16</b>		<b>278,87</b>	<b>274,47</b>	<b>4,40</b>




Dimensions (inch)	ø	H	ø <sub>1</sub>	l <sub>1</sub>	l <sub>2</sub>
Floor fastening for ø380	9,84	19,29	0,43	4,17	4,17
Floor fastening for ø250 & ø320	9,84	11,02	0,43	4,17	4,17




The parts mentioned below are delivered inside the parasol box 1:


- Assembly for Gargantua & Pantagruel: ILKS38 2,02 lb
- Floor fastening Inumbrina ø250 - ø320: ILV22 2,62 lb
- Floor fastening Inumbrina ø380: ILV50 3,70 lb
- Galvanised frame for concrete base: 13,88

## Materials & colours



**Parasol fabric**  High-tech polyester\*

---

**Low/high table base & tabletop**  Solid surface or structured powder-coating\*

\*Subject to change, check price list or [www.extremis.com](http://www.extremis.com)

Materials	Key facts	Thickness	Layer thickness	Density	In/outdoor	Water	UV colour fastness	Flame retarding
		inch	micron					
High-tech polyester fabric	<ul style="list-style-type: none"> <li>High UV resistance and ultra strong</li> <li>Low weight / high tear strength</li> <li>Long-term appearance</li> </ul>	0,01	n.a.	8,81 oz/ft <sup>2</sup>	Outdoor	The fabric has a water column of 350 mm (EN 20811)	7/8 (ISO 105-B02)	/
Stainless steel base	<ul style="list-style-type: none"> <li>High rust resistance</li> <li>Periodical maintenance required</li> </ul>	0,07 - 0,19	n.a.	0,50 10 <sup>9</sup> lb/ft <sup>3</sup>	Outdoor	n.a.	Very good	NEN-EN13501-1 A1 *
Concrete base	<ul style="list-style-type: none"> <li>Made under high pressure</li> <li>Matt and porous</li> </ul>	3,93	n.a.	0,13 10 <sup>9</sup> lb/ft <sup>3</sup>	Outdoor	n.a.	Very good	NEN-EN13501-1 A1 *
Hot dip galvanised steel base for concrete base	<ul style="list-style-type: none"> <li>Most durable method for protecting metal from rusting</li> <li>Protective layer</li> <li>Very long life span</li> <li>100% recyclable</li> <li>Cradle to Cradle Certified™</li> </ul>	0,07 - 0,39	50 - 100	0,47 10 <sup>9</sup> lb/ft <sup>3</sup>	Outdoor	n.a.	Very good, galvanisation will however become less shiny when used outdoors	NEN-EN13501-1 A1 *
Powder-coated steel base	<ul style="list-style-type: none"> <li>Consists of natural minerals bonded by acrylics</li> <li>Long-life</li> <li>Resistant to impact, stains and discolouration</li> <li>Non-flammable</li> <li>Very easy to clean and maintain</li> </ul>	0,31	50 - 100	0,48 10 <sup>9</sup> lb/ft <sup>3</sup>	Outdoor & indoor	n.a.	Very good: colour can fade to some extent when exposed to UV	NEN-EN 13501-1 A2-s1 **
HPL tabletop	<ul style="list-style-type: none"> <li>Manufactured under high pressure</li> <li>Reinforced with wood fibres</li> <li>Flat panel</li> <li>High impact resistance</li> <li>Easy to clean</li> </ul>	0,51	n.a.	0,09 10 <sup>9</sup> lb/ft <sup>3</sup>	Outdoor & indoor	n.a.	>6 (EN438-2:27) en (ASTM G53-91)	/
Solid surface tabletop	<ul style="list-style-type: none"> <li>Made under high pressure</li> <li>Matt and non-porous</li> <li>1/3 PMMA + 2/3 ATH</li> </ul>	0,47	n.a.	0,10 10 <sup>9</sup> lb/ft <sup>3</sup>	Outdoor & indoor	n.a.	>6 DIN EN 1015-B02	B-s1 (EN 13501-1)
Cover	<ul style="list-style-type: none"> <li>100% polyester</li> <li>Polyuréthane coating</li> <li>Breathable, so not 100% water-proof</li> </ul>	0,01	n.a.	8,46 oz/ft <sup>2</sup>	Outdoor	Water repellent & breathable	6-8/8 (ISO 105-B02)	/

\* NEN-EN13501-1 A1

Class A1 products will not contribute to fire in any stage, including fully developed fire. For this reason, they are assumed to be capable of satisfying all requirements of all lower classes as well.

\*\* NEN-EN13501-1 A2-s1

Satisfying the same criteria as class B for the SBI-test according to EN 13823. In addition, under conditions of a fully developed fire these products will not significantly contribute to the fire load and fire growth.

Class A - class 1 (UBC 8-1)

Californian standard.

IN WINDY CIRCUMSTANCES, CLOSE THE PARASOL. IN CASE OF STRONG WINDS OR WHEN NOT IN USE, PROTECT THE INUMBRINA WITH (OPTIONAL) COVER OR STORE IT INDOORS TO AVOID THAT THE PARASOL WOULD BLOW OPEN OR GET DIRTY.

DO NOT LEAVE THE PARASOL UNATTENDED WHEN OPENED.

STORE THE PARASOL WHEN NOT IN USE FOR A LONG TIME AS FOLLOWS: VERTICALLY, COMPLETELY DRY AND IN A DRY ENVIRONMENT.

DO NOT LEAVE CLOSED IF NOT COMPLETELY DRY. DO NOT LEAVE THE PARASOL CLOSED FOR A LONG TIME IF IT IS STILL DAMP OR WET.

FOR VENTILATION PURPOSES, THE COVER IS NOT 100% WATER PROOF.



## Applications

**Residential:** fixed to the ground, fixed steel plate, on a (wheel) base, on a Gargantua, Pantagruel picnic, Abachus, Anker or Virus table.

## Instructions

1. Remove cover.
2. To open the parasol, firmly pull the rope until the parasol fabric is almost completely horizontal.
3. To put the rope in the tube, you should fold it in 2 and put the loop in the hole until it is completely tucked away.
4. To close the parasol again, take the rope out of the tube and hold it in a slight angle. Tip: keep the rope aslope until the parasol is completely closed.

## F.a.q.

**Q: Is the fabric 100% waterproof?**

**A:** With light rain fall you can stay seated under the parasol. The fabric is slightly slanted in opened position. With heavy rain fall, the canvas lets through a little bit of water. This is typical for the fabric and necessary, because the fabric should be able to ventilate.

**Q: Can you remove the fabric for washing?**

**A:** We do not advise this but it is possible. In the first place, you should close the parasol when you do not use it and protect it with its cover. This protects the parasol from getting dirty.

**Q: How resistant is the parasol?**

**A:** Tests in a wind tunnel have shown that the parasol withstands wind speeds up to 8 on the Beaufort scale. Still, it is best to close it sooner (from wind speed 6 is the rule of thumb).

**Q: Do you need to use a parasol cover?**

**A:** Using a cover is strongly recommended for use in most climates around the world. Protect your parasol from polluted rain, bird droppings, dust and heavy winds to avoid marks or stains on the parasol fabric.

## Maintenance

Find maintenance instructions at the downloads section of [extremis.com](http://extremis.com) for:

### PARASOL FABRIC

- Shake or brush off loose dirt immediately.
- Spray Extremis Multi Cleaner.
- Use a soft brush and make circular movements.
- Let the suds soak in for a moment.
- Rinse thoroughly to remove all soap residue.
- Simply allow to dry.

### STAINLESS STEEL

- Clean regularly with a dry cloth and some stainless steel cleaner.

## Floor fastening

Inumbrina comes with an optional floor anchoring set.



## Good to know

- The diameter of the pole of the Inumbrina 38 is  $\varnothing 1,88$  inch. The diameter of the pole of the Inumbrina 25 & 32 is  $\varnothing 1,37$  inch.
- Inumbrina combines perfectly with the Gargantua, Pantagruel picnic, Abachus, Anker & Virus table.



## Website

[www.extremis.com/inumbrina](http://www.extremis.com/inumbrina)