

KIP 8000



MAXIMUM PRODUCTION PRINT SYSTEM

KIP



LET YOUR IMAGINATION RUN WILD

Key Features

- Award winning HDP Plus Technology
- 22 'D' size prints per minute
- 4 roll media capacity
- Network printer or full scan-to-file system
- Modular design for easy upgrade path
- Add KIP monochrome or mono/color scanner
- Range of available scan speeds
- Integrated with KIP software

Maximum Production

The world's fastest wide format printer makes waiting for documents a thing of the past. The design of the KIP 8000 is focused on delivering high volume, uninterrupted print production that enables you to meet the increasingly tight deadlines of today's work environment.

With outstanding print quality, the industry's lowest operational costs and off-the-chart production speed of 47 feet per minute, the KIP 8000 provides all the necessary tools for wide format document success. In addition, a monochrome or mono/color dual function KIP scanner may be positioned on top of the printer to create a single footprint system, or arranged into two freestanding components to create separate printing and scanning stations.



Model Number	Starprint 8000	Starprint 8050STF	Starprint 8080STF	Starprint 8120STF	Starprint 8160STF	Starprint 8200STF
Print Speed	22 D size/min	22 D size/min	22 D size/min	22 D size/min	22 D size/min	22 D size/min
Number of Rolls (up to 36")	4 roll	4 roll	4 roll	4 roll	4 roll	4 roll
Scanner Model (Single or Dual Footprint)	n/a	2050	2080	2120	2160	2200 mono/color
Scan Speed @ 400dpi	n/a	2.0 ips	3.2 ips	4.8 ips	6.4 ips	4.8 ips/2.0 ips

KIP 8000 FEATURES

Superior Productivity

At an astonishing print speed of 47 feet per minute (22 'D' size/min), the KIP 8000 is the fastest wide format digital printer available today.

High Definition Printing Technology

Reduced dot size, high print resolution and image smoothing technology (IST) provide exceptional quality, high definition lines, distinctive grayscales and consistent solid areas.

Image Smoothing Technology

Using advanced data matching algorithms that examine the print data, IST enhances grayscale diagonal and curved line output to ensure optimal image quality with every print.

Automatic Maintenance Systems

An auto cleaning LED print head, dual main charge system and maintenance free media cutter result in longer intervals between maintenance visits for increased productivity.

Calibrated LED Head Design

The print head design involves the individual calibration of all LED pixels. This unique process delivers a smoother and more consistent image quality for fine lines, grayscales and graphics.

Contact Toner System

The non-magnetic, mono-component KIP 8000 toner technology provides 100% toner efficiency, without unnecessary carriers, developers or waste receptacles to purchase or replace.



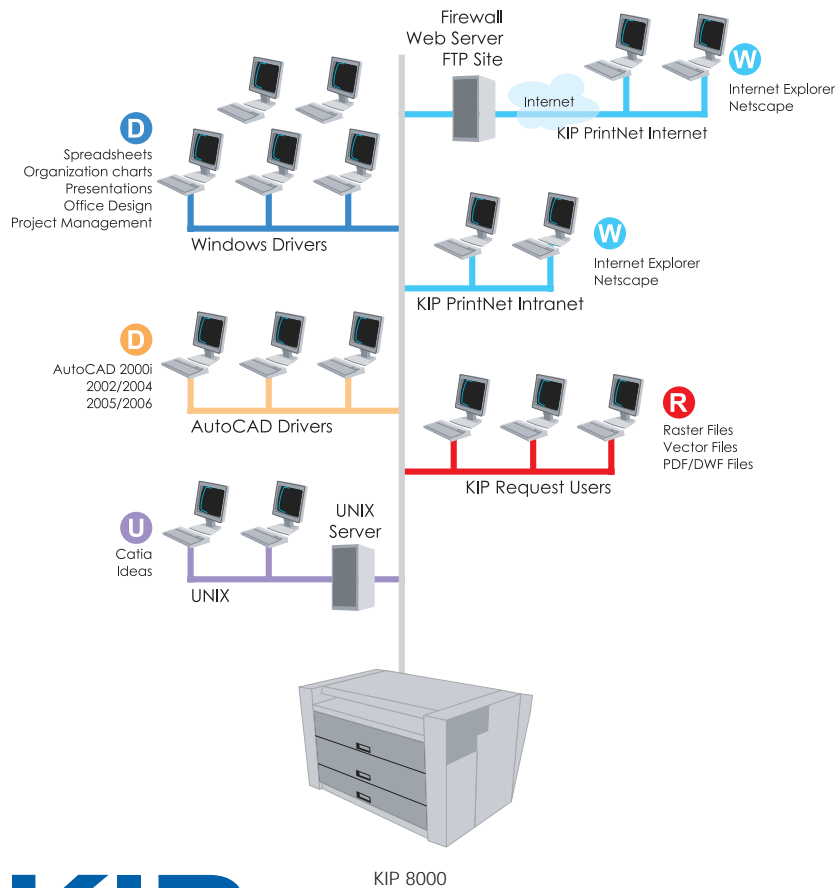
- 400 x 400 dpi
- 200 lines per inch
- ≤.0025" dot size
- ≤.0025" one pixel line width



KIP 8000 printers operate at 100% toner efficiency. This provides lower toner consumption and no waste toner.



KIP PRINTING APPLICATIONS



Get Connected

The KIP 8000 is designed to provide fast and easy network connectivity for any type of network environment. The widely adopted TCP/IP networking protocol standard for network communications is utilized. With reliable and flexible networking and the ability to manage and send a variety of files from virtually any type of application, a wide range of printing possibilities are realized from the KIP 8000.



- R** KIP Request is an easy-to-use application that provides remote users with an efficient method of printing single documents or collated sets through the network.
- W** KIP PrintNet is a web-based printing utility compatible with standard web browsers which shares a similar interface with KIP Request software.
- D** KIP AutoCAD drivers enable printing directly from AutoCAD® technical design applications.
- D** The KIP Windows driver enables printing directly from all types of Windows® based applications.
- U** Standard TCP/IP connectivity ensures easy integration with UNIX/Mac based software applications.

KIP

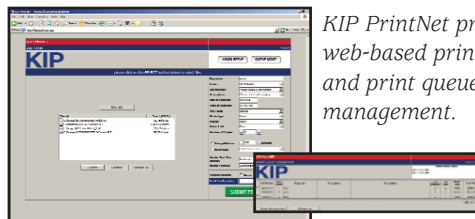
KIP 8000 NETWORK PRINTER

KIP Request

Network print jobs may be sent to the KIP 8000 by remote users of KIP Request® software. Jobs are transmitted to the print queue with required print size, number of copies or sets, media selection, stamping, folding and pen settings. Extensive print previewing capabilities allow users to inspect image settings before printing. In addition, KIP Request provides remote users with KIP 8000 status information and remote print queue viewing and management.

KIP PrintNet

KIP PrintNet, a web-based printing utility, allows authorized users to select and send single or multiple files to KIP printers from standard web browsers. Due to a uniform interface, users of KIP Request software will be instantly familiar with the operation of KIP PrintNet, providing a seamless transition between online and offline operations.



KIP PrintNet provides web-based printing and print queue management.

DWF and PDF Support

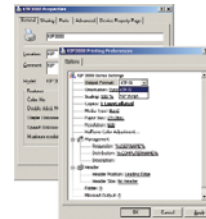
The DWF file format from Autodesk® is fully integrated with KIP digital printers and KIP network printing software. This feature allows users to view and print designs published to DWF format from Autodesk applications.

KIP Powerscript⁵ provides KIP 8000 operators with the power to quickly and effectively interpret complex PostScript® and PDF® files into wide format prints.

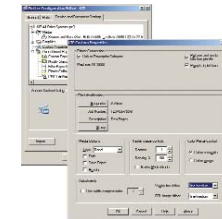
KIP 8000 Print Drivers

The Windows driver supports Windows® printing features including set collation, fast spooling for multiple copies or sets, data tracking for job accounting and media selection.

The KIP AutoCAD drivers offer unique data tracking by username and job number. To assist in making printing decisions, two-way printer status allows users to view roll and media information.



Windows Drivers for a wide range of print-ready applications.



AutoCAD Drivers for versions 2000-2006 are fully integrated with KIP Request.

KIP 8000 SCAN-TO-FILE SYSTEM

Key Monochrome Scanner Features

- Range of scanning speeds to meet any requirement
- Internal memory for sets copying
- Touch screen interface and intuitive controls
- Mode memory stores up to 10 user defined settings
- Excellent connectivity options, including SCSI and TWAIN
- Maximum speed and high resolution

KIP Mono/Color Scanner Features

- Dual function scan system - monochrome and color
- Designed for high production environments.
- True 600 x 600 dpi optical resolution
- Enhanced monochrome image quality
- Outstanding high fidelity color imaging
- Integrated with KIP and inkjet printers

KIP Monochrome Scanners

KIP monochrome scanners are highly advanced wide format image capture devices designed to make precise information capture a fast, streamlined process regardless of original quality. The available range of scan speeds delivers reliable performance and outstanding quality, covering the total range of production demands.

KIP Mono/Color Scanner

The KIP 2200 color and monochrome scanner provides high demand users with a unique combination of maximum speed and high resolution. Fully integrated with KIP and inkjet printers, the KIP 2200 scan system provides a full suite of state of the art software for color and monochrome copying and scan-to-file operations. True 600 x 600 dpi optical resolution scan quality is delivered from three independent imaging cameras and a touchscreen user interface that provides ease of use and comprehensive system status information.

The KIP 2200 scan system covers the full range of monochrome and color applications, from basic to advanced, while handling the work of two scanners from a single unit.



FOLDING AND FINISHING OPTIONS

KIP 1000 Stacker

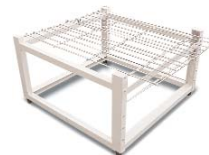
The KIP 1000 stacker is a convenient and cost effective stacking system for 'A' to 'E' size prints. Up to 1,000 mixed size prints on bond, vellum or film are effortlessly collected on this portable stacker.

KIP 1200 Stacker

The KIP 1200 stacker is an intelligent, online print stacking system designed for the KIP 8000. Infrared signals from the printer inform the stacker of system status and turns the stacker off when jobs are completed. The KIP 1200 stacker is capable of stacking up to 1,000 mixed size prints and features a small footprint for added convenience.

KIPFold 8000

The KIPFold 8000 online folding system communicates directly with KIP 8000 series printers, and may be controlled through the folder touch screen or KIP software. The system comes standard with packet and book folding capabilities up to 8 ft. in length and fan folding up to 20 ft. in length. The KIPFold 8000 offers an output tray that stacks up to 150+ folded documents for collated sets. The system also includes a print stacker for unfolded documents, fanfolds, and overlengths.



KIP 1000 Stacker



KIP 1200 Stacker



KIPFold 8000

KIP 8000 SERIES SPECIFICATIONS

CONFIGURATION:

Single or Dual Footprint

PRINTING METHOD:

LED Technology with HDP Plus

PHOTORECEPTOR:

Organic Photoconductive Drum

PRINT SPEED:

22 'D' size per minute

RESOLUTION:

400 x 400 dpi

MEDIA SIZE:

Maximum Print Width: 36"

Minimum Print Width: 11"

MEDIA WEIGHT:

Plain Paper: 18 - 24 lb

Tracing Paper: 18 - 20 lb

Film: 3.5 mil

WARM UP TIME:

Instant from standby

FUSING METHOD:

Heat - pressure

DEVELOPMENT METHOD:

Dry, non-magnetic mono-component toner

INPUT POWER:

220 - 240V, 50/60Hz, 20A

DIMENSIONS:

53" (W) x 39" (D) x 34" (H)

WEIGHT:

881 lbs.

PRINT LANGUAGES:

Supported data formats include:

- DWF
- PDF/PS3
- TIF Group 4, Cals Group 4, Government C4, Intergraph CIT/TG4, IBM IOCA, JPG, Uncompressed Grayscale TIF, Uncompressed Color TIF
- HPGL, HPGL/2, Calcomp 906/907, CGM, HP-RTL

KIP APPLICATIONS AND DRIVERS:

- KIP Request provides an efficient method of reviewing and sending single files or collated sets for printing.
- KIP Driver Pack includes Windows and AutoCAD Drivers to enable printing from supported applications.
- KIP PrintNet is a web-based print utility compatible with standard web browsers.



KIP AMERICA

Phone: (800) 252-6793

Email: info@kipamerica.com

Website: www.kipamerica.com

KIP CANADA

Phone: (800) 653-7552

Email: info@kipcanada.com

Website: www.kipcanada.com

AutoCAD and DWF are registered trademarks of Autodesk Inc. Windows is a registered trademark of Microsoft. KIP 8000 and KIP Request are registered trademarks of KIP. All other product names mentioned herein are trademarks of their respective companies. All specifications are subject to change without notice.

8000 Series Printer Specifications



Starprint 8000 Printer

The KIP 8000 Series, part of the Starprint Family of Printers and Scan-to-File Systems is the world's fastest wide format LED printer. It offers exceptional print quality with KIP High Definition Print Technology. The KIP 8000 operates at a constant speed of 22 'D' size or 47'/min. True concurrent scanning and printing lets you scan and prepare jobs in advance while spooled jobs are processed and printed. Paper rolls and toner bottles may even be changed while the machine is still operating. By adding a KIP scanner, the 8000 series printer may be easily upgraded to a powerful digital copying, scan-to-file and network print management system. (model 8050 STF, 8080 STF, 8120 STF, 8160 STF, 8200 STF) Please refer to the KIP Scanning Systems section for scanner specifications.

Features

- Print and scan-to-file simultaneously
- Multiple prints up to 999
- Automatic file detection
- Automatic roll selection/switching
- Ultra-fast file processing on the controller
- Pen management and dithering control
- Remote diagnostics

Technology	LED printer with KIP HDP Plus Technology
DPI	400 x 400
Dot Size	.0025"
One Pixel Line	.0025"
Speed	22 'D' size per min, 9.4" / sec., 47' /min
Media	4 roll (500') with automatic cut sheet feeder (50 sheets) and manual sheet feed bypass
Media Tray	See Options
Warm-up	Instant from standby 6 minutes from cold startup
Output	Minimum: 8.5" x 11" Maximum: 36" x 75"
Media Types	Bond 18-24 lb, Film 3 mil., Vellum 16-20 lb
Dimensions	53" (W) x 39" (D) x 34" (H)
Weight	881 lbs
Power	Low Power (sleep mode) 100W
Consumption	Standby 630 W Printing 2.45kW
Electrical Requirements	220-240V, 16 Amps
Acoustic Noise	Standby: 55dB, Printing: 70dB
Safety Approvals	UL, UL-C, FCC Class A

Powerprint Embedded Controller

Platform	KIP Powerprint software with Windows XP
Network	TCP/IP, NetBEUI (smb), Novell
Protocols	(IPX/SPX), LPR/LPD
File Formats	HPGL 1/2, HP-RTL, Calcomp 906/907, CALS Group 4, TIFF Group 4, PCX, Intergraph CIT/TG4, Versatec Color Graphics (VCGL), Uncompressed Grayscale TIFF, TIFF Packbits, IBM IOCA, EDMICS, TLC (KIP), PNG, JPEG
Optional	ATA Complaint CGM
File Formats	Postscript level 3 for EPS, PS, and PDF

8000 Series Optional Accessories



KIP 1000 Super Stacker

This heavy-duty print stacking system is capable of holding up to 1000 'E' size prints. Complete with casters for mobile operations.

KIP 1200 Auto Stacker

This heavy-duty print stacking system is capable of holding up to 1000 'D' size prints. Infrared communication with printer enables operations.

KIPFold 8000

The online/offline KIPFold 8000 folding and finishing system is configured to the specific print speed of the KIP printer. The system comes standard with 8.5" x 11" packet and book folding capabilities up to 8 ft. in length and fan folding up to 20 ft. in length. The folder offers an output tray that stacks up to 150+ folded documents for collated sets. The system also includes a print stacker for unfolded documents, fanfolds and overlengths.

All-in-One Control Center

The All-in-One Control Center gives users immediate access to the print queue and all printer functions, depending on their security level. This complete touch screen control center is a perfect solution for environments where the printer may not be near an external or STF PC, which is normally used to view the print queue or system status via the network. Regardless of where network PCs are located, the KIP All-in-One Control Center lets authorized users directly control the print queue, create print jobs and edit system settings right from the printer!