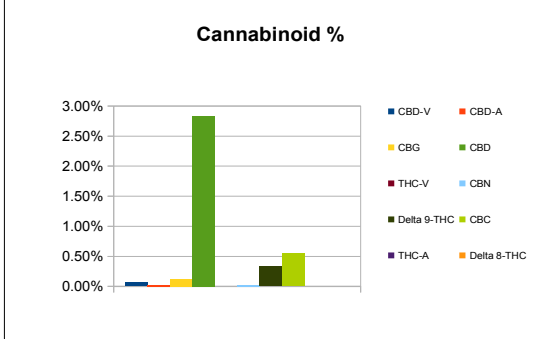



Sample Information		
Sample Identification	25mg gelcap	
Laboratory Number	2018015363 DUP	
Batch Number	42003	
Matrix	Medible	
Analyzed Date	11/01/18	
Extraction Date	11/01/18	
Cannabinoid (HPLC)	%	mg/g
Compound		
CBD-V	0.07%	0.66
CBD-A	0.03%	0.30
CBG	0.13%	1.28
CBD	2.84%	28.36
THC-V	ND	ND
CBN	0.03%	0.30
Delta 9-THC	0.33%	3.32
CBC	0.55%	5.48
THC-A	ND	ND
Delta 8-THC	ND	ND
Cannabinoids Total		
Max Active THC	0.33%	3.32
Max Active CBD	2.86%	28.63
T. Active Cannabinoids	3.94%	39.41
Total Cannabinoids	3.97%	39.71

Max Active Ratios		
	8.6:1 CBD to THC	
	0.1:1 THC to CBD	



Sample Image

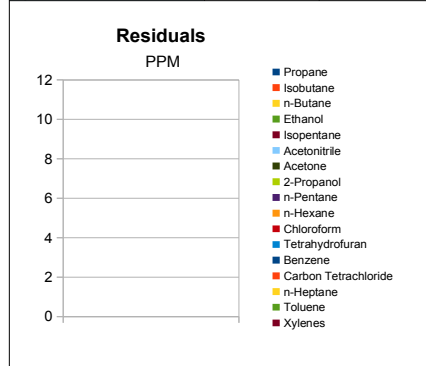


15363
11/01

Micro Visual: NOT TESTED

Percent Moisture: Not Tested

RS (GCMS-HS)	PPM	RL
Compound		
Propane	ND	5.0
Isobutane	ND	5.0
n-Butane	ND	5.0
Ethanol	ND	5.0
Isopentane	ND	5.0
Acetonitrile	ND	5.0
Acetone	ND	50.0
2-Propanol	ND	5.0
n-Pentane	ND	5.0
n-Hexane	ND	5.0
Chloroform	ND	5.0
Tetrahydrofuran	ND	5.0
Benzene	ND	5.0
Carbon Tetrachloride	ND	5.0
n-Heptane	ND	5.0
Toluene	ND	5.0
Xylenes	ND	10.0



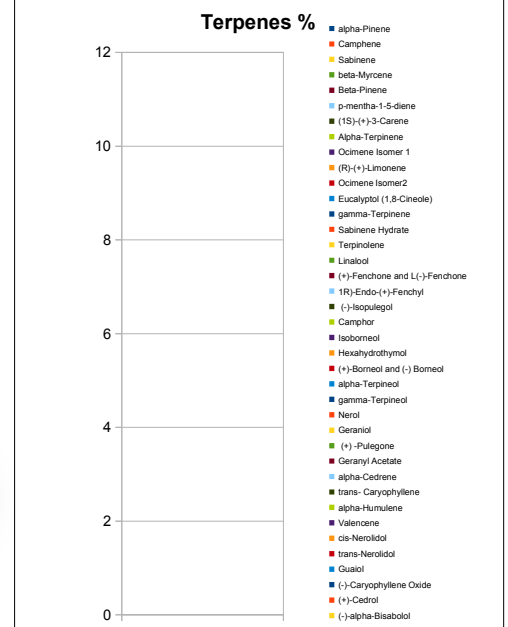
g/medible	0.63
mg THC/medible	2.08
mg CBD/medible	17.74
(mg) total cannabinoids/medible	24.83

Metals	PPM	RL
Compound		
Lead	NT	0.010
Arsenic	NT	0.010
Cadmium	NT	0.010
Mercury	NT	0.001

RL=Reporting Limit
NA=Not Applicable
NT=Not Tested
ND=Non Detected



Terpene (GC-MS)	%	mg/g
Compound		
alpha-Pinene	NT	NT
Camphene	NT	NT
Sabinene	NT	NT
beta-Myrcene	NT	NT
Beta-Pinene	NT	NT
p-mentha-1-5-diene	NT	NT
(1S)-(+)-3-Carene	NT	NT
Alpha-Terpinene	NT	NT
Ocimene Isomer 1	NT	NT
(R)-(+)-Limonene	NT	NT
Ocimene Isomer2	NT	NT
Eucalyptol (1,8-Cineole)	NT	NT
gamma-Terpinene	NT	NT
Sabinene Hydrate	NT	NT
Terpinolene	NT	NT
Linalool	NT	NT
(+)-Fenchone and L(-)-Fenchone	NT	NT
1R)-Endo-(+)-Fenchyl	NT	NT
(-)-Isopulegol	NT	NT
Camphor	NT	NT
Isoborneol	NT	NT
Hexahydrothymol	NT	NT
(+)-Borneol and (-) Borneol	NT	NT
alpha-Terpineol	NT	NT
gamma-Terpineol	NT	NT
Nerol	NT	NT
Geraniol	NT	NT
(+) -Pulegone	NT	NT
Geranyl Acetate	NT	NT
alpha-Cedrene	NT	NT
trans- Caryophyllene	NT	NT
alpha-Humulene	NT	NT
Valencene	NT	NT
cis-Nerolidol	NT	NT
trans-Nerolidol	NT	NT
Guaiol	NT	NT
(-)-Caryophyllene Oxide	NT	NT
(+)-Cedrol	NT	NT
(-)-alpha-Bisabolol	NT	NT
Total Terpenes	NT	NT



Chemist: EG
Report Expires: 12/01/18