

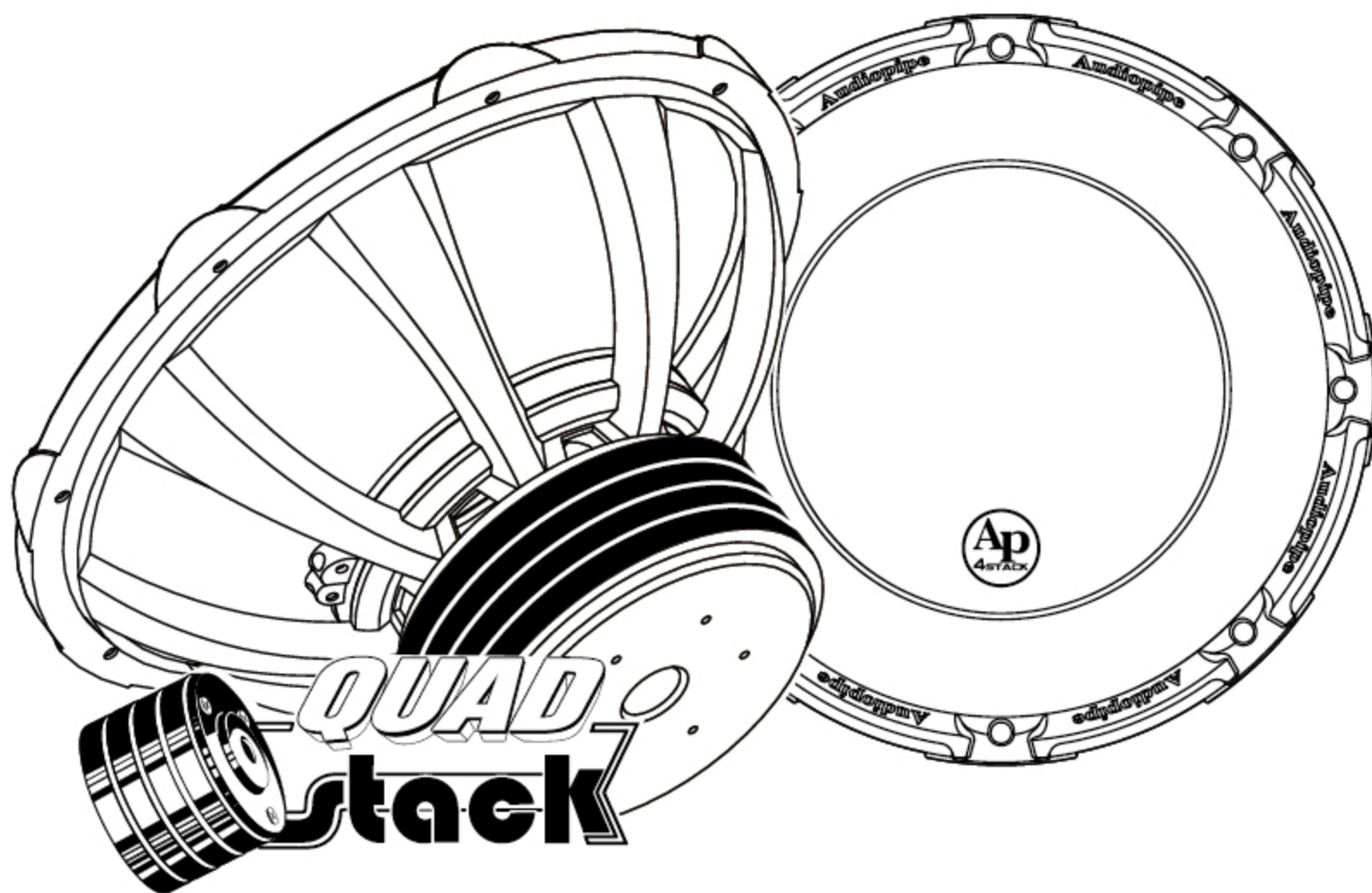


Audiopipe®

Hwy 836, U.S.A.



User's Manual



Patent No.:US D523,848 S

US D565,550 S

US D582,893 S

TXX-BDC4-18

TXX-BDC4-18D2



All Audiopipe products are designed, manufactured and tested to perform in harsh environments. From our entry level products to our high end series, Audiopipe is your best choice for competition level performance. We welcome you to Team Audiopipe.

For more information, please visit your authorized Audiopipe dealer or:

WWW.AUDIOPIPE.COM

Introduction:

Congratulations on your purchase of an Audiopipe subwoofer. Your Audiopipe subwoofer has been engineered to produce the highest quality sub-bass performance in your vehicle. Audiopipe dealers have the knowledge, skills to build high-quality enclosure that will maximize the performance of your subwoofer. We highly recommend that you have your enclosure built by an Audiopipe authorized dealer. For more dealer information in your area do visit .

All Audiopipe products are designed, manufactured and tested to perform in the harsh environments. From our entry level products to our high end series, Audiopipe is your best choice for competition level performance.

We welcome you to team Audiopipe.....

Table of Contents:

Warranty _____	1
Dimensions _____	2
Specifications _____	3
Building an Enclosure _____	4
Wiring Diagrams _____	5

Audiopipe Limited warranty

Audiopipe warrants this Subwoofer to be free of defects in material and workmanship for period of 1 year from the original purchase date with original receipt. Products found to be defective during the warranty period will be repaired or replaced (with a product deemed to be equivalent) at Audiopipe's discretion. Warranty replacements may have some cosmetic scratches and blemishes. This warranty only applies to the original purchaser of the product purchased from an Audiopipe authorized dealer.

Limit on Implied warranties

Any applicable implied warranties are limited in duration to the period of the express warranty as provided herein beginning with the date of the original purchase at the retail, and no warranties, whether express or implied, shall apply to this product thereafter. Some states do not allow limitations on implied warranties, therefore these exclusions may not apply to you. This warranty gives you specific legal rights and you may also have other rights which vary from state to state.

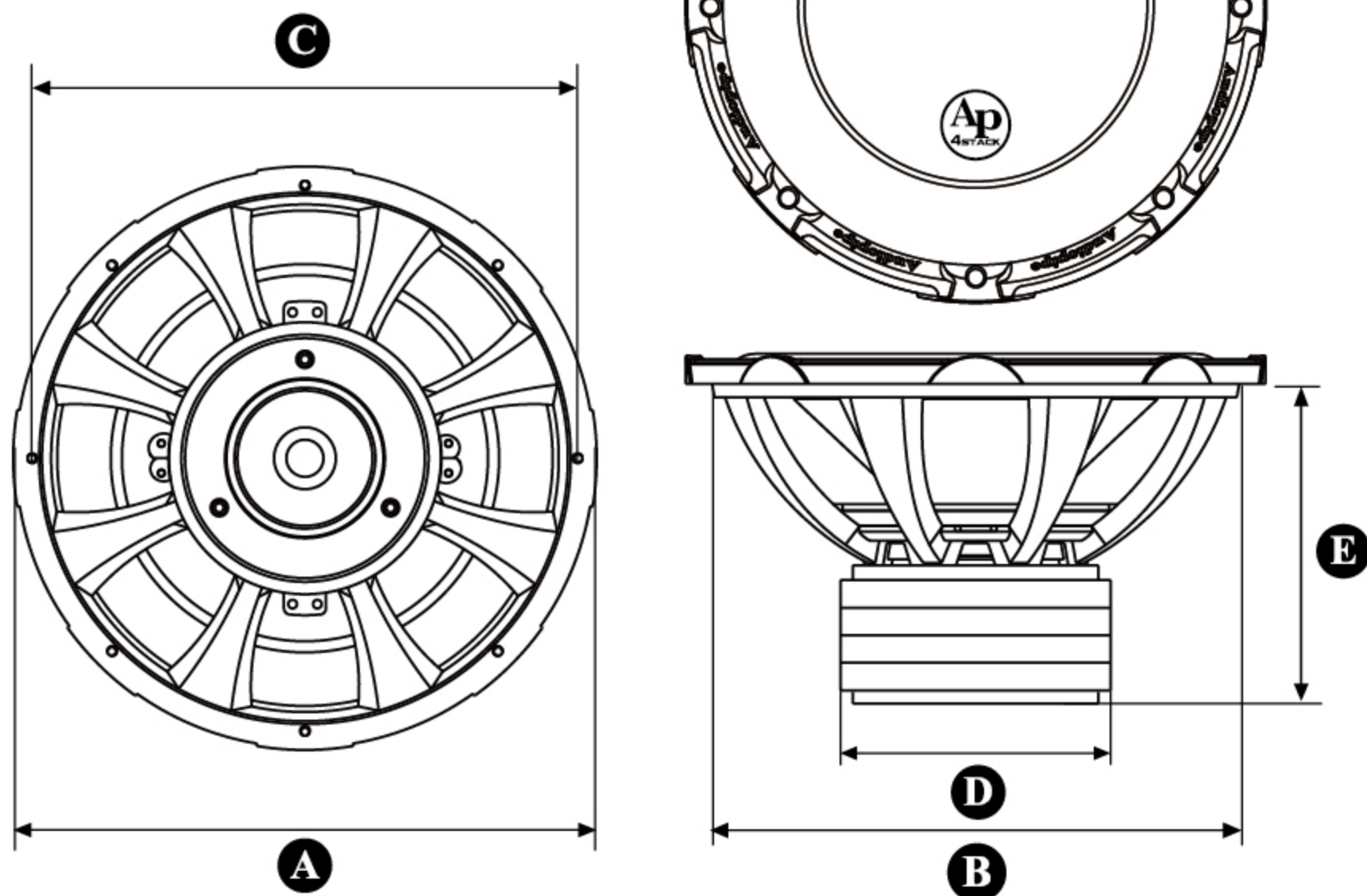
What is not covered

- The cost of shipping
- Damage due to improper installation
- Any cost or expense related to the removal or reinstallation of product
- Product which has the serial number defaced, altered or removed
- Freight damage
- Product not purchased from an unauthorized dealer
- Damage through negligence, misuse, accident or abuse, repeated returns maybe considered abuse

How to obtain service

All warranty returns should be sent to Audiopipe freight prepaid and must be accompanied by proof of purchase (a copy of the original receipt) listing the customer name, dealers name, invoice number and product purchased. Items sent freight collect or COD will be refused. Call the Audiopipe customer service number 9 am to 5pm eastern standard time at 1-877-AUDIOPIPE (1-877-283-4674) for a return authorization number (RMA). Package all defectives items in the original package or in a package that will prevent shipping damages and return to **Audiopipe 1195 NW 97th Ave Miami, Florida 33172**. Audiopipe strives to maintain a goal of 24hrs return following receipt of the goods. Delays may be incurred if lack of replacement inventory or parts is encountered.

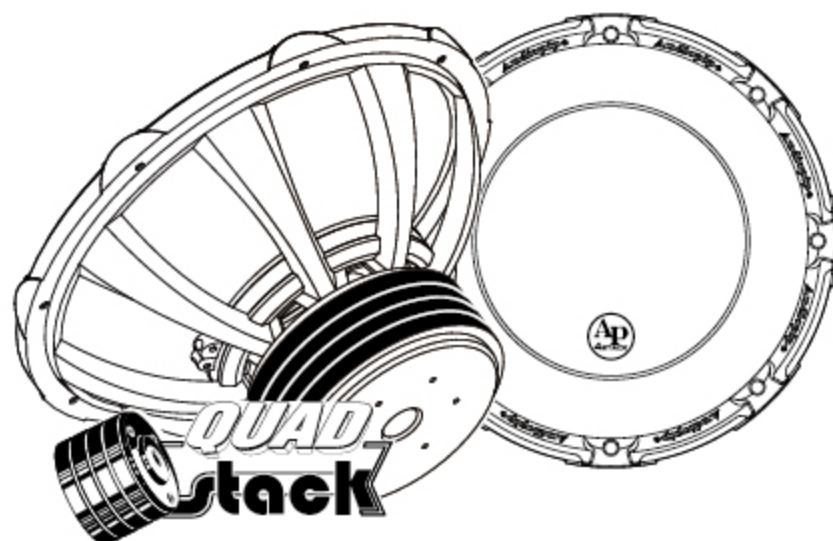
Dimensions:



	TXX-BDC4-18/TXX-BDC4-18D2
Nominal Diameter	Ø457mm 18"
Overall Diameter(A)	Ø475mm 18 11/16"
Mounting Hole Diameter(B)	Ø430mm 16 15/16"
Bolt Hole Circle(C)	Ø442mm 17 3/8"
Magnet Diameter(D)	Ø220mm 8 11/16"
Mounting Depth(E)	245mm 9 5/8"
Driver Displacement	5.5 L 0.2 cu ft
Net Weight	22kg 48.5 lb

Features

- Dual Voice Coil BASV
- Powdered Black Paint Aluminum Basket
- Patent Pipe Multi-Connect Terminal
- Dual Magnet



Specifications:

	TXX-BDC4-18	TXX-BDC4-18D2
Fs (Hz)	28	28
Re (Ohms)	2x3.6	2x1.8
Le (mH)	5.0	5.2
Qts	0.35	0.32
Qes	0.4	0.36
Qms	2.2	2.0
Cms (m/N)	0.26	0.28
Vas (L)	52	52
Mms (g)	1200	1200
Mmd (g)	1170	1170
No (%)	0.3	0.3
SPL (dB-1W/1M)	90	90
BL (T*M)	65	70
Sd (cm ²)	1119	1119
Krm (mOhms)	126	124
Erm	0.7	0.69
Kxm (mH)	127	60
Exm	0.69	0.68
Frequency Response (Hz)	15-800Hz	15-800Hz
Voice Coil Diameter	4"/100mm	4"/100mm
Voice Coil Height	1.8"/46mm	1.8"/46mm
Voice Coil Layers	4	4
Magnetic Gap Height	0.55"/14mm	0.55"/14mm
Linera Excursion, pk-pk(Xmax)	0.62"/16mm	0.62"/16mm
Maximum Excursion, pk-pk	1.97"/50mm	1.97"/50mm
Magnet Weight	340 oz./9.3 kg	340 oz./9.3 kg
Woofer Displacement	6 L/0.21 cubic ft.	6 L/0.21 cubic ft.
Net Weight	48.5 lbs./22 kg	48.5 lbs./22 kg
Power Rating	1700W/3400W	1700W/3400W

Building an enclosure

When building an enclosure, the walls should be as rigid as possible and not flex. Flexing of the enclosure can drastically decrease your subwoofers performance. It is recommended that Enclosures be built using 1" MDF, be glued and secured with nails or screws. Add bracing to each of the larger unsupported panels. Your enclosures construction has a significant bearing on how well your subwoofers perform. When designing your enclosure keep in mind and account for wood thickness, port and woofer displacement.

Sealed: 2.25-5.5 ft³

Ported: 4.25-7.5 ft³

Use 12.5"² of port area per cubic foot of internal volume in the enclosure. This is about ideal for most daily installations. Surface area is the width of the port multiplied by the height of the port.

Example – For a 2.0 ft³ enclosure, 25"² of port surface area is recommended.

With 12.5"² of port area per cubic foot, you can use the following lengths to get one of the desired tuning frequencies.

16" = 40hz

20" = 36hz

25" = 33hz

32" = 30hz

With any of our subwoofers, we recommend that you tune no higher than 38 hz for daily music use.

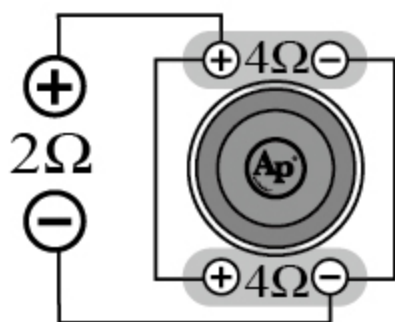
Wiring subwoofers

When designing your system it is important to achieve a good power match between your subwoofer amplifier and the subwoofers capability. RMS power should be considered as a regular method of driving the subwoofer, make use of the power without drastically overdriving the amplifier. Amplifiers cannot read how many subwoofers are in the connection, they normally read the final impedance or otherwise known as ohms. It is important to properly match your amplifiers normal operating impedance with right subwoofer configuration.

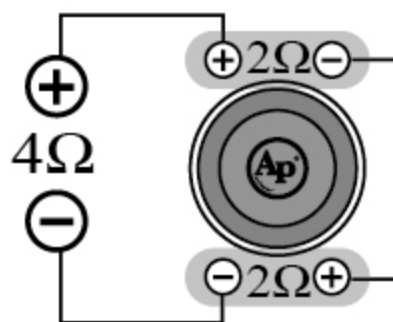
Wiring options

The TXX-BDC4 series of subwoofers are available with dual 4 Ohms voice coils. Both coils must be connected to a source of amplification. A dual 4 Ohms woofer can be configured in parallel to provide a 2 Ohm load. A dual 4 Ohms woofer can be also configured in series to provide a 8 Ohms load. The terminal with the red markings is the positive while the black terminals represent the negative.

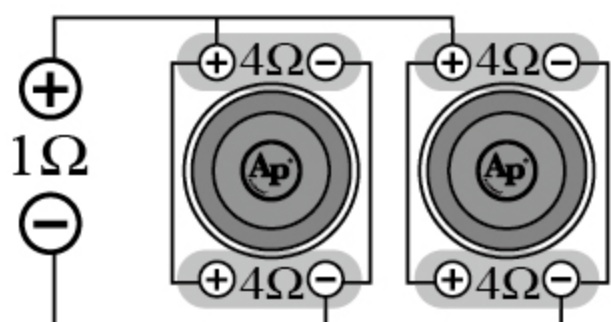
4 ohm DVC Speaker = 2 ohm Load



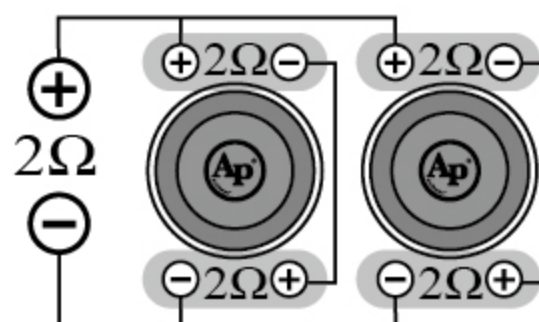
2 ohm DVC Speaker = 4 ohm Load



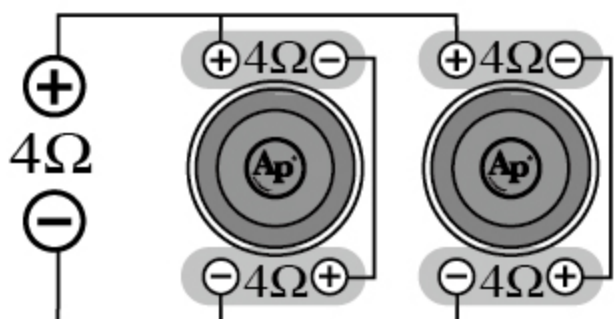
4 ohm DVC Speaker = 1 ohm Load



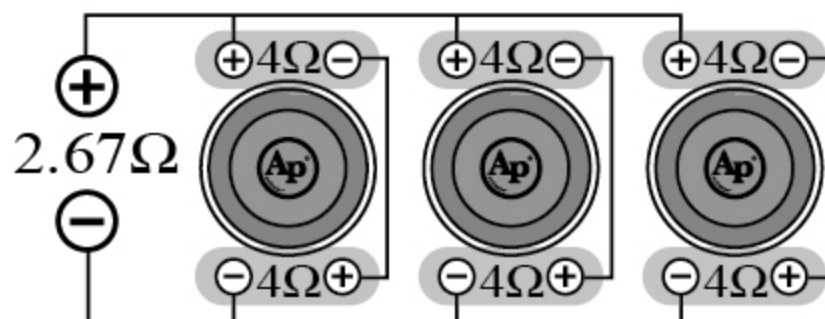
2 ohm DVC Speaker = 2 ohm Load



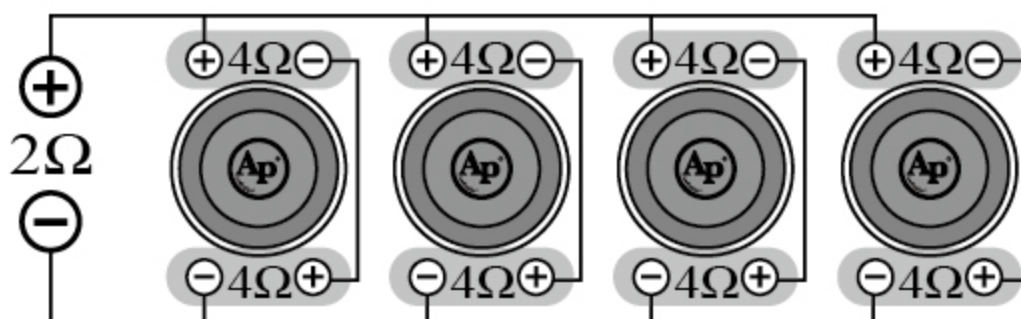
4 ohm DVC Speaker = 4 ohm Load



4 ohm DVC Speaker = 2.67 ohm Load



4 ohm DVC Speaker = 2 ohm Load



2 ohm DVC Speaker = 4 ohm Load

