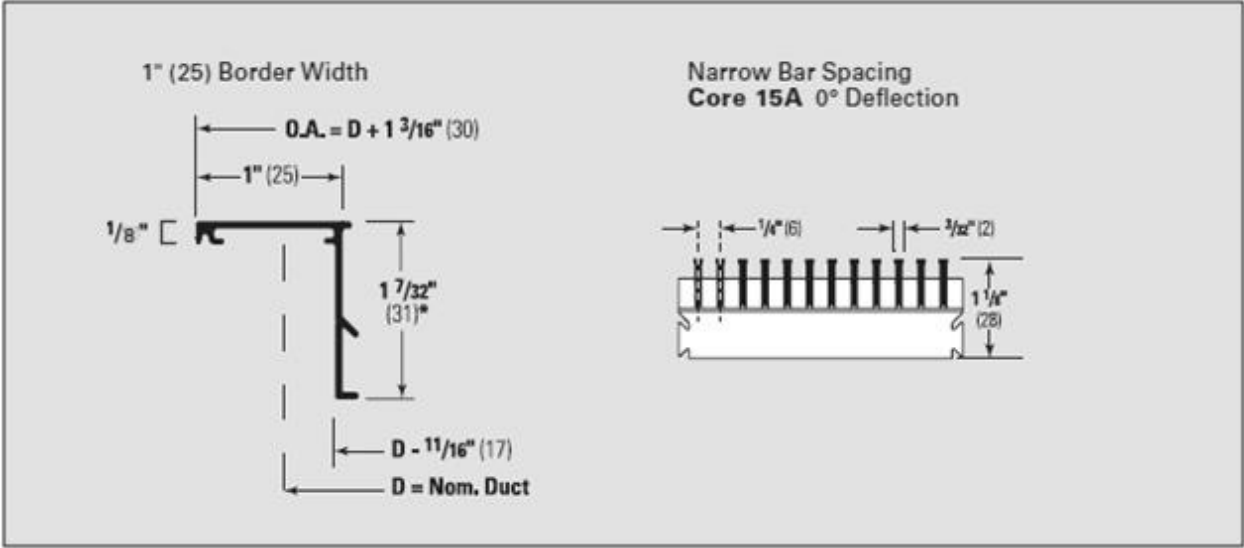
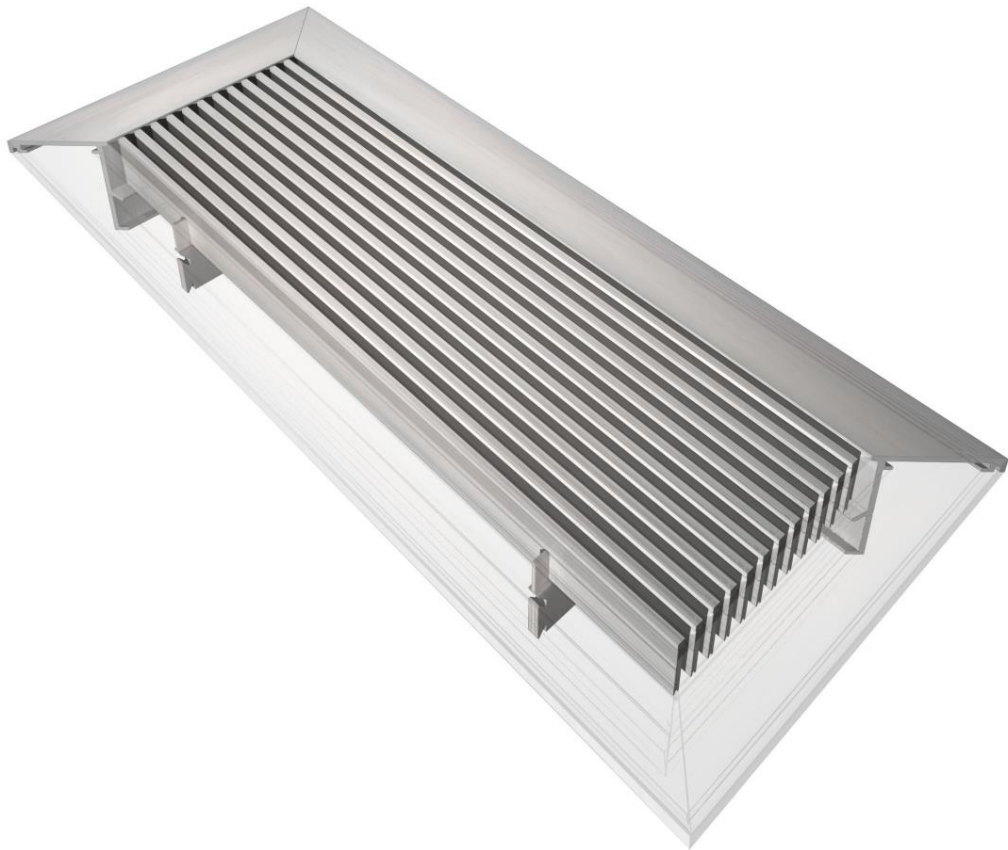




Kul grilles - Technical Specifications



Available Sizes

For grilles supplied as one unit:

Minimum	Maximum*
4" x 1-1/2"	72" x 18"

*Length, one piece

- Grilles longer than 72" will be supplied in two or more equal sized units complete with alignment splice plates for attachment.

Grille Face Overall Dimension

The dimension on the left (duct size) represents the size of the opening / ductwork. The size on the right represents the overall size of the frame.

Duct Size	External Frame Dimension
1 – ½" (38)	2 – 11/16" (68)
2" – (51)	3 – 3/16" (81)
2 – ½" (63)	3 – 11/16" (94)
3" (76)	4 – 3/16" (106))
3 ½" (89)	4 – 11/16" (119)
4" (102)	5 – 3/16" (132)
5" (127)	6 – 3/16" (157)
6" (152)	7 3/16" (183)

Performance Data

Size	Static Pressure		.011	.024	.044	.069	.098	.133	.175	.222
1 1/2 in.	Flow cfm / ft		12	19	25	31	37	43	50	56
	NC		—	—	—	19	24	28	32	35
	Throw	Sill or Floor	1-1-1	2-2-2	4-4-4	6-6-6	8-8-9	9-10-11	10-11-13	12-13-15
	ft	Sidewall	2-4-6	4-7-10	6-9-13	7-11-16	8-13-19	9-15-21	10-16-23	12-18-25
2 in.	Flow cfm / ft		19	28	37	47	56	66	75	84
	NC		—	—	—	18	23	28	31	35
	Throw	Sill or Floor	1-1-1	4-4-4	6-6-6	9-9-9	11-11-12	12-13-15	14-15-17	15-17-19
	ft	Sidewall	3-5-7	5-8-11	7-11-15	9-14-19	11-16-22	12-18-25	14-20-27	15-22-29
2 1/2 in.	Flow cfm / ft		26	39	52	65	78	91	104	117
	NC		—	—	—	19	24	29	33	36
	Throw	Sill or Floor	1-1-1	5-5-5	8-8-8	10-10-11	13-14-15	15-16-17	16-18-20	20-20-21
	ft	Sidewall	4-6-8	6-9-12	8-12-16	10-15-20	13-18-24	15-21-27	16-22-30	20-27-34
3 in.	Flow cfm / ft		33	50	66	83	100	116	133	149
	NC		—	—	—	20	25	30	34	37
	Throw	Sill or Floor	2-2-2	6-6-6	9-9-10	12-12-13	15-16-17	18-19-20	20-21-22	23-23-23
	ft	Sidewall	4-6-9	7-10-14	9-13-18	12-17-22	15-20-25	18-23-29	20-26-33	23-30-37
3 1/2 in.	Flow cfm / ft		41	61	82	102	122	143	163	184
	NC		—	—	—	21	26	31	35	38
	Throw	Sill or Floor	2-2-2	7-7-7	10-10-11	15-15-15	17-18-19	20-21-22	22-23-24	25-25-26
	ft	Sidewall	5-7-10	8-11-15	10-15-20	15-19-24	17-22-27	20-25-31	22-28-35	25-32-39
4 in.	Flow cfm / ft		49	73	98	122	146	171	195	220
	NC		—	—	16	22	28	32	36	39
	Throw	Sill or Floor	3-3-3	8-8-8	12-12-13	15-15-16	19-19-20	21-22-23	24-24-25	26-26-27
	ft	Sidewall	6-8-11	9-12-16	12-16-20	15-20-25	19-24-29	21-26-32	24-30-36	26-33-40
5 in.	Flow cfm / ft		63	94	125	157	188	220	251	282
	NC		—	—	16	22	27	32	36	39
	Throw	Sill or Floor	4-4-4	9-9-9	14-14-14	17-17-17	21-21-22	24-24-24	27-27-27	29-29-29
	ft	Sidewall	7-9-12	11-14-18	14-18-22	17-21-26	21-26-31	24-29-35	27-33-39	30-36-43
6 in.	Flow cfm / ft		78	116	155	194	233	272	310	349
	NC		—	—	18	24	29	34	37	41
	Throw	Sill or Floor	5-5-5	10-10-10	15-15-15	18-18-18	23-23-23	25-25-25	28-28-29	31-31-31
	ft	Sidewall	8-10-13	12-15-19	15-19-23	20-24-28	23-27-32	26-31-37	29-34-40	33-39-45

Notes:

Tested in accordance with ASHRAE Standard 70-2006

1. Pressure

All pressures are in inches of water

2. Sound

The NC values are based on a room absorption of 10 dB re 10⁻¹² Watts and a 10 ft. active section.

The NC correction values for other lengths are listed in the table below.

NC Correction for Length

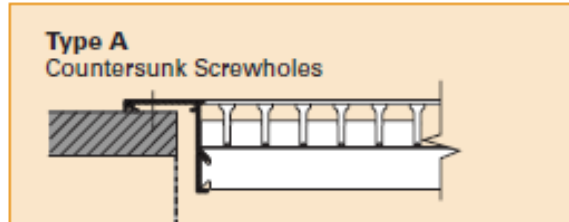
Active Length in Ft.	1	2	4	6	8	10	15	20	25	30
Correction	-10	-7	-4	-2	-1	0	+2	+3	+4	+5

3. Return Air Applications

When used as a return air intake, the NC value given in the performance table will be increased by 4. For return air application, the negative static pressure will be 0.8 times the static pressure value as shown in the performance table.

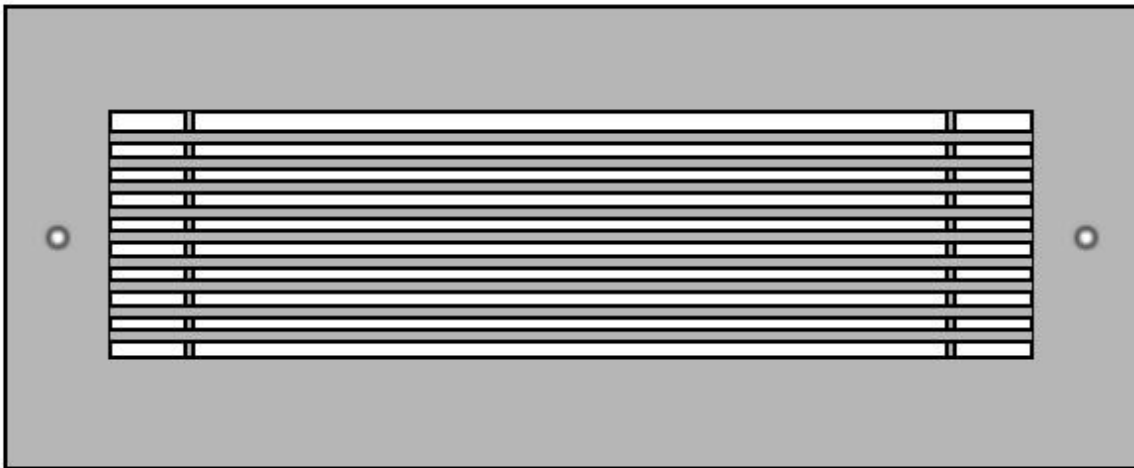
4. Blanks (—) spaces indicate an NC level below 15.

Available Fastening Types



Countersunk screwholes are visible from the face of the grille and are required when mounting for sidewall and ceiling application.

Color matched screws are provided with each order



Screw placement / Screws required for different grille sizes:

