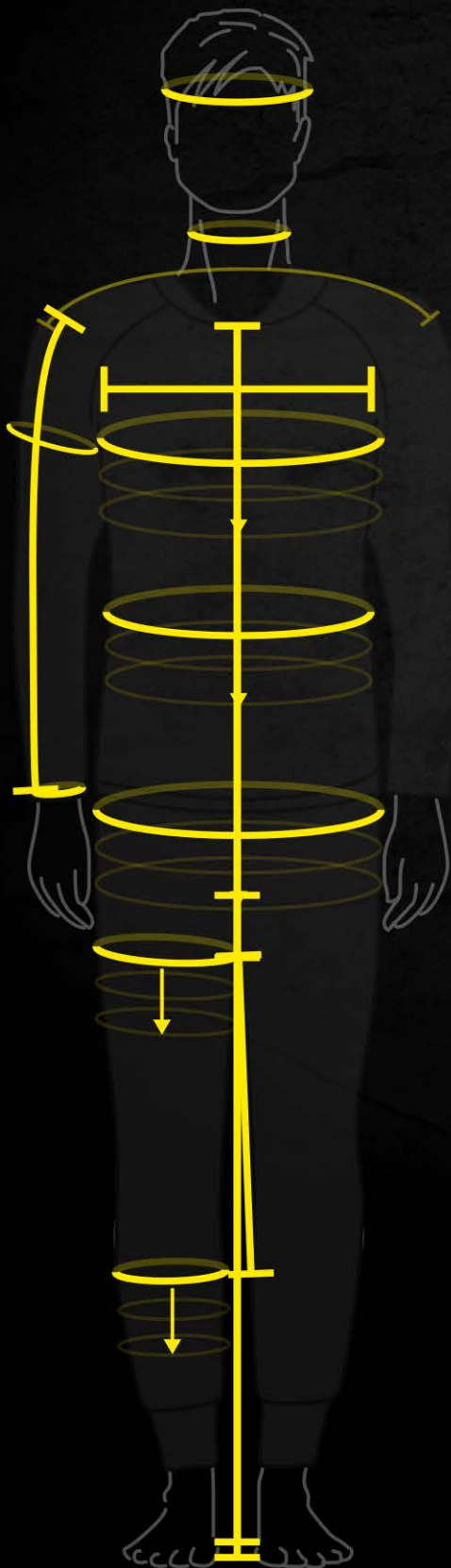


SF TECH DRYSUIT MEASUREMENT FORM



INFO

RECOMMENDATIONS FOR MEASUREMENTS:



The measurements must be taken with the soft measuring tape exercising a light pressure in order to be straight and flat but without pushing on the undersuit.



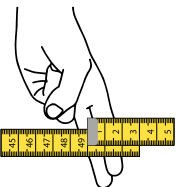
If you have a doubt, ask a professional tailor or an official retailer to take the measurements for you.



Thank you for adding to your file a front and side view full-length body picture of yourself.



The person taking the measurements takes full responsibility for the result. SF Tech Sarl or DiveLife UK Ltd cannot be held responsible for suits made to incorrectly taken measurements.



Measurements with this symbol must be taken with two fingers below the measuring tape. When the measure is determined, move the measuring tape slightly upwards and downwards to check whether the widest point has been measured.



PART 1

MEASUREMENTS WITH THE HEAVIEST UNDERSUIT

A Size

 cm

B Weight

 kg

C Size of shoe

 Nr.

Conversion chart

Inches (")	Centimeters (cm)
1/16 in	0.15875 cm
0.1 in	0.2540 cm
1/8 in	0.3175 cm
1/4 in	0.635 cm
1/2 in	1.27 cm
1 in	2.54 cm
2 in	5.08 cm
3 in	7.62 cm
4 in	10.16 cm
5 in	12.70 cm
6 in	15.24 cm
7 in	17.78 cm
8 in	20.32 cm
9 in	22.86 cm
10 in	25.40 cm
12 in = 1 ft	30.48 cm

Feet (ft)	Centimeters (cm)
0.01 ft	0.3048 cm
0.1 ft	3.048 cm
1 ft	30.48 cm

1 Head

 cm

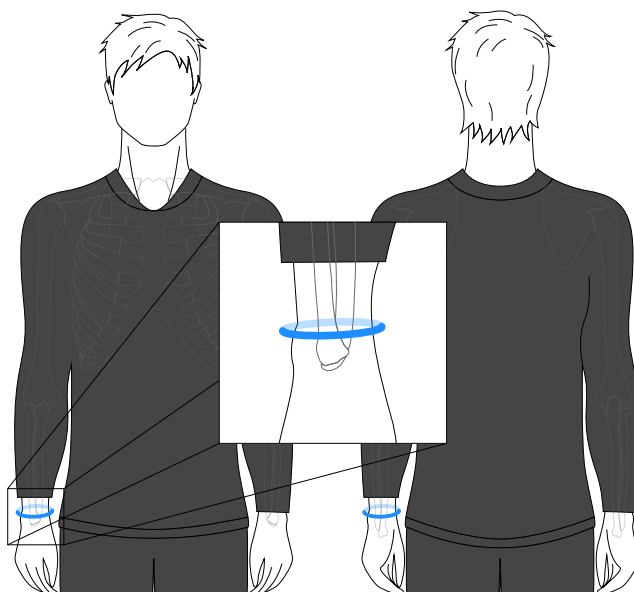

▲ Measured on the forehead, straight on the skin.

2 Neck

 cm


▲ Measured in the middle of the neck, straight on the skin.

3 Wrist

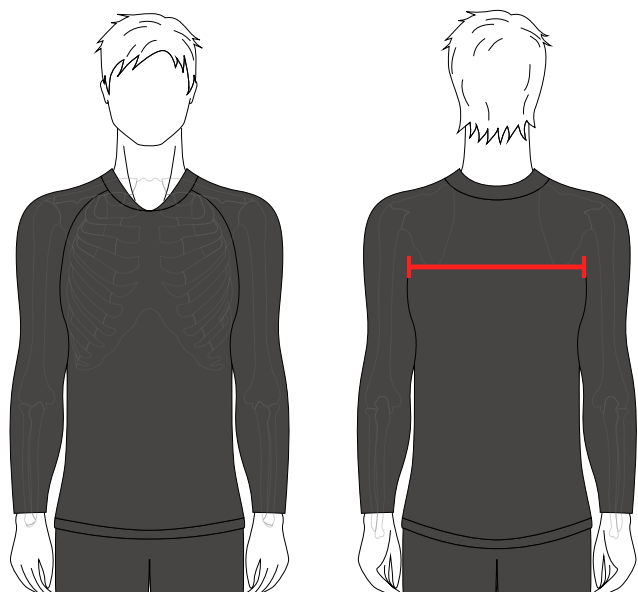
 cm


▲ Circumference of the wrist behind the bone, straight on the skin.

PART 1

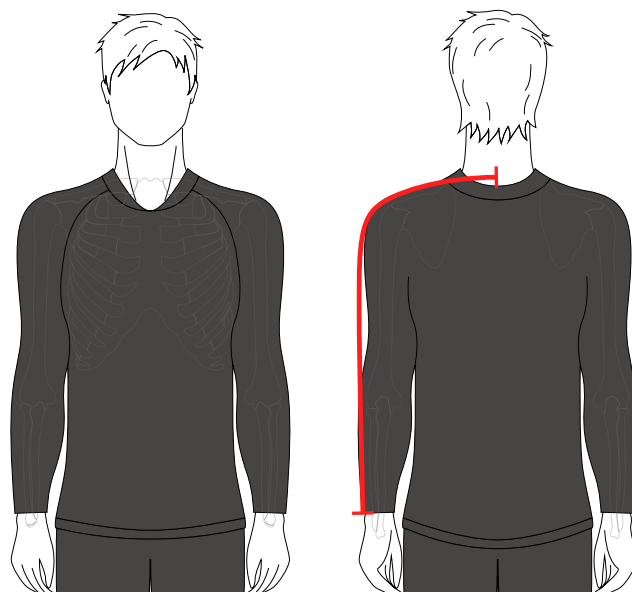
MEASUREMENTS WITH THE HEAVIEST UNDERSUIT

4 Stature

 cm

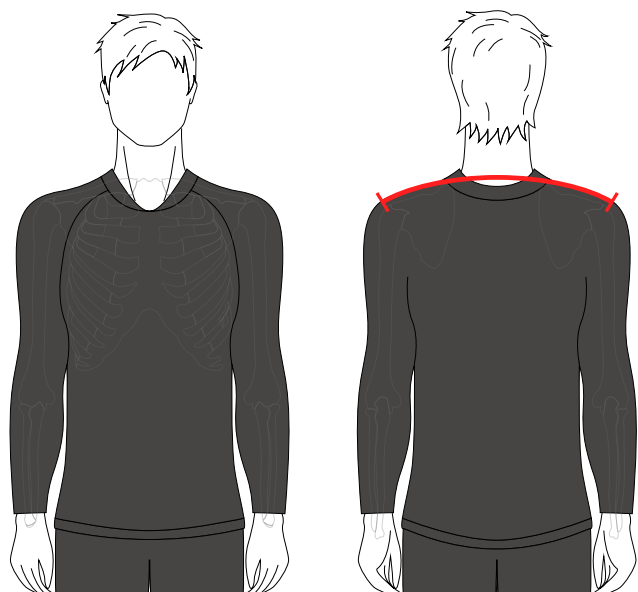
▲ 6 cm perpendicular to the top of the armpit.

6 Arm -Shoulder

 cm

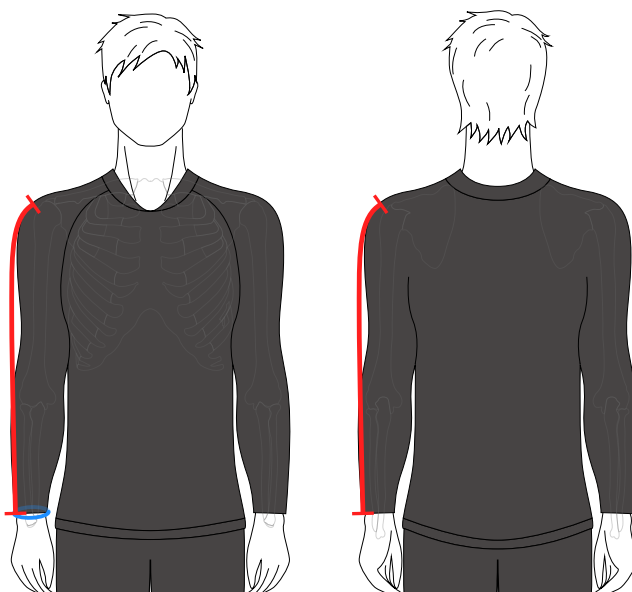
▲ From the bone of the neck to the bone of the wrist, over the shoulder.

5 Shoulders

 cm

▲ From the bone of the left shoulder to the bone of the right shoulder.

7 Arm

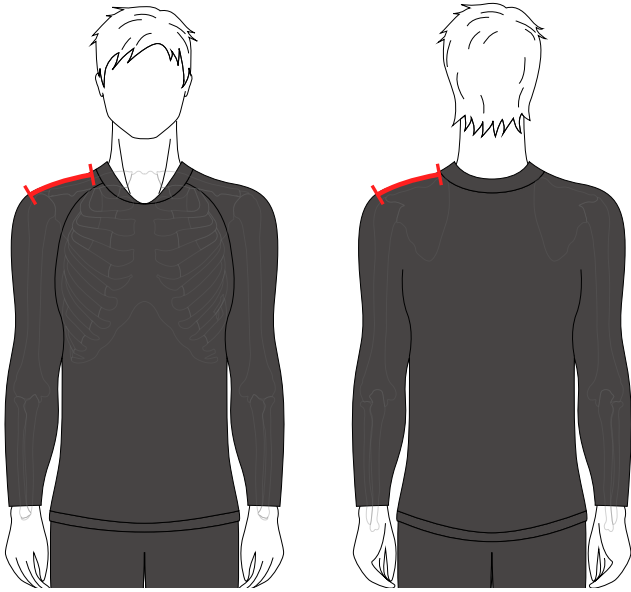
 cm

▲ From the bone of the shoulder to the bone of the wrist.

PART 1

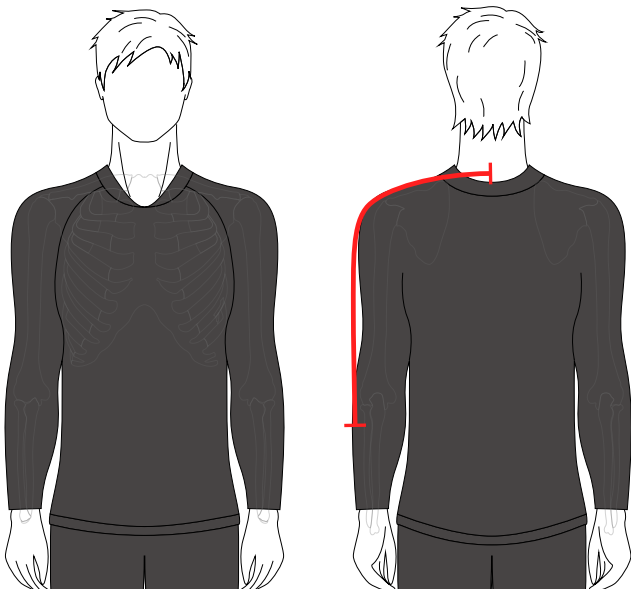
MEASUREMENTS WITH THE HEAVIEST UNDERSUIT

8 Shoulder

cm

▲ From the bones of the shoulder to the beginning of the neck.

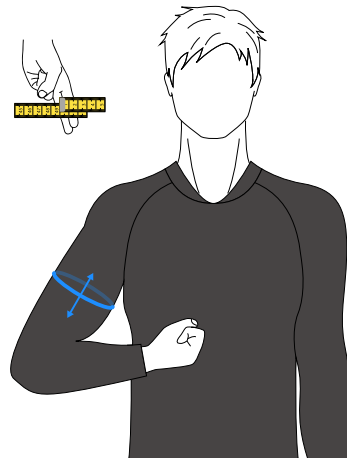
9 Forearm height

cm

▲ From the bone of the neck to the forearm.

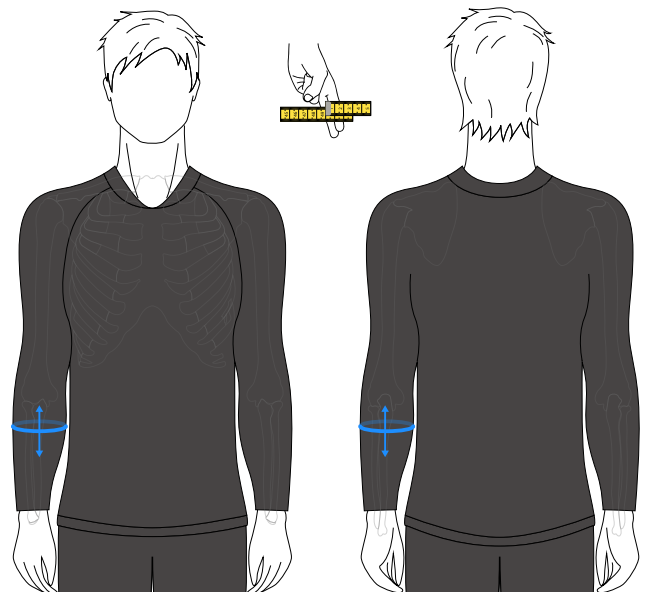
Measure holding two fingers below the measuring tape. When the measure is determined, move the measuring tape slightly upwards and downwards to check whether the widest point has been measured.

10 Biceps

cm

▲ At the level of the armpit with the arm slightly bent. Measure at the widest point.

11 Forearm

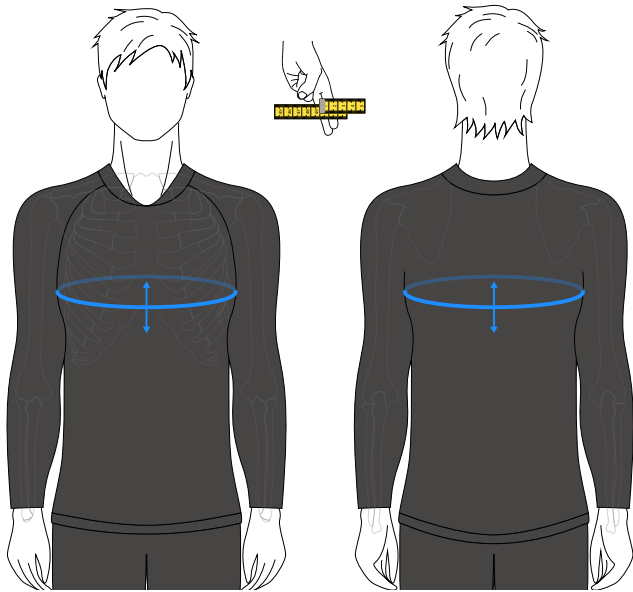
cm

▲ At the level of the forearm at the widest point.

PART 1

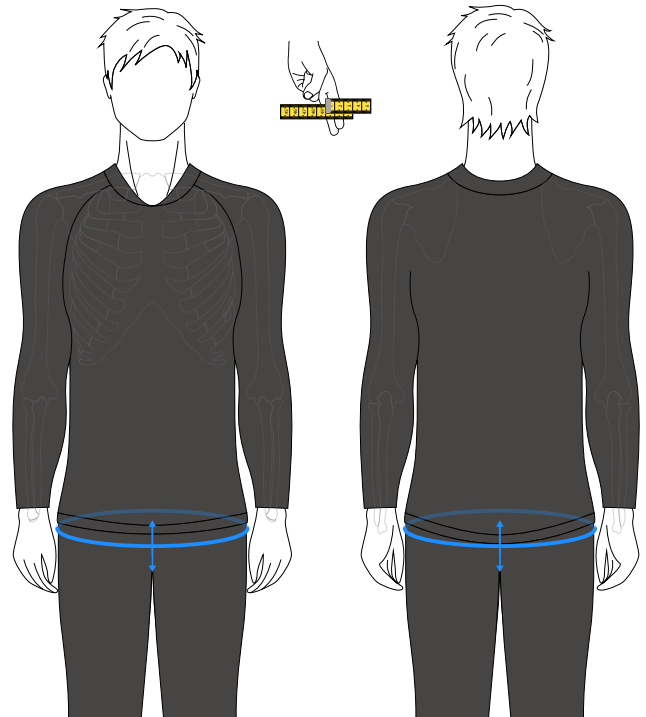
MEASUREMENTS WITH THE HEAVIEST UNDERSUIT

12 Chest

 cm

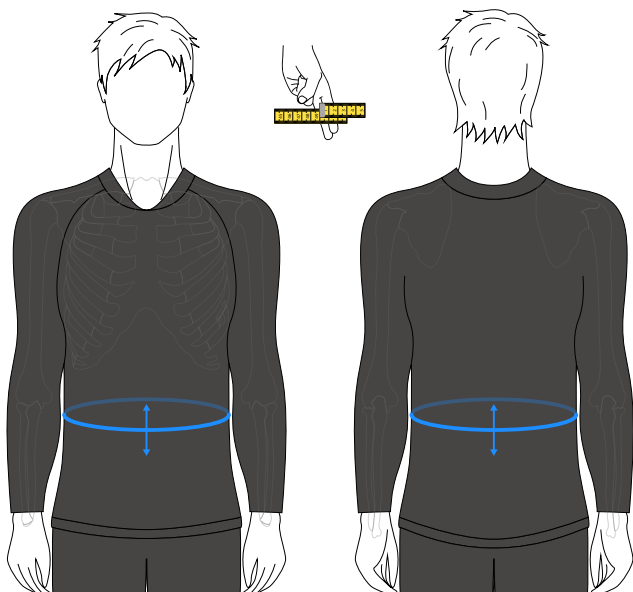
▲ At the widest point of the chest.

14 Hips

 cm

▲ At the widest point between the hips and the buttocks.

13 Waist

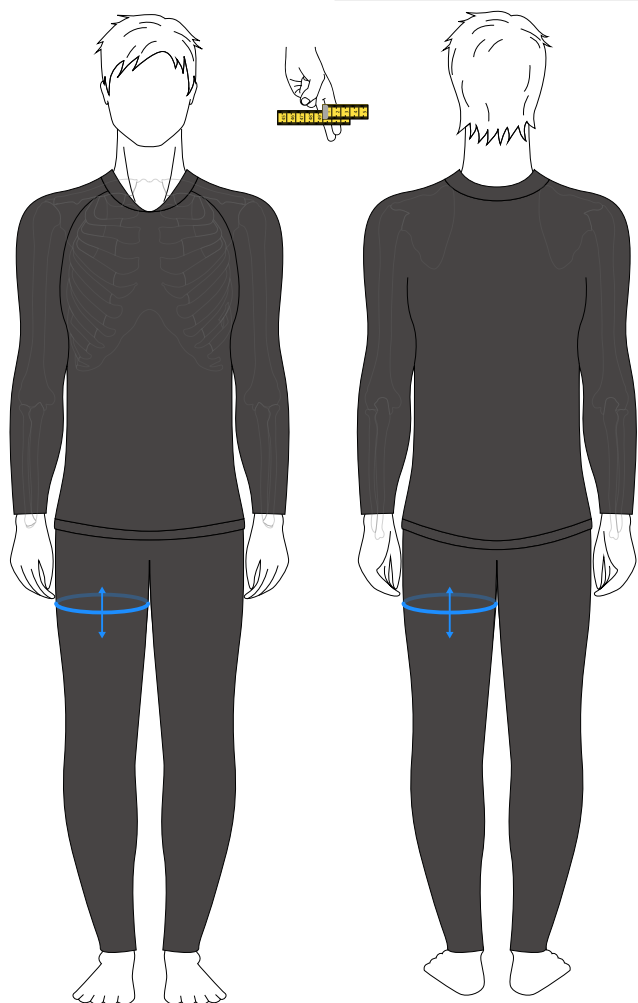
 cm

▲ At the narrowest point, if the abdomen is flat, otherwise measure it at the widest point on the abdomen.

PART 1

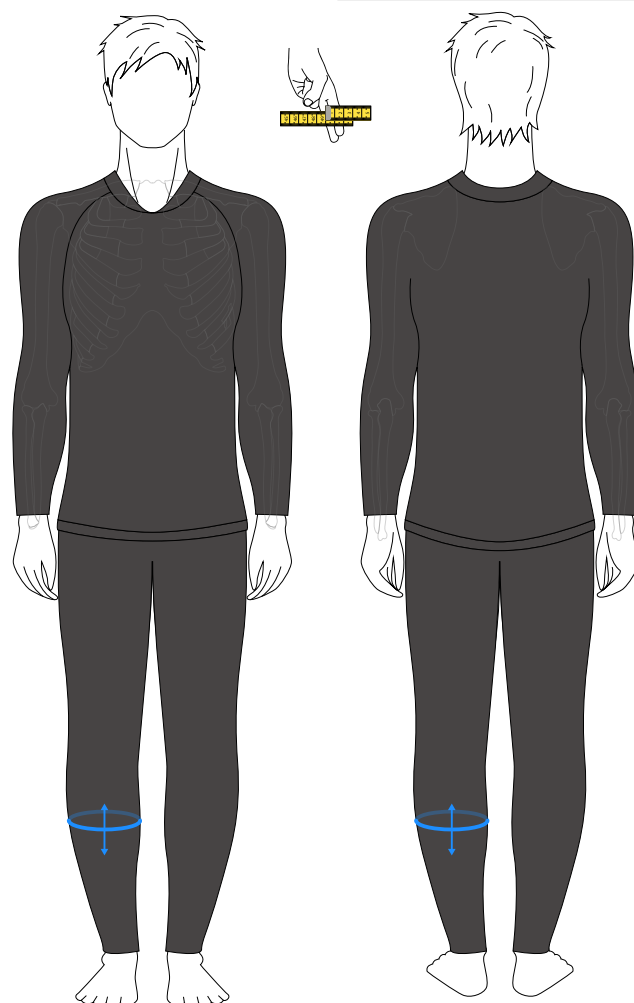
MEASUREMENTS WITH THE HEAVIEST UNDERSUIT

15 Thigh

 cm

▲ At the crotch height, at the widest point.

16 Calf

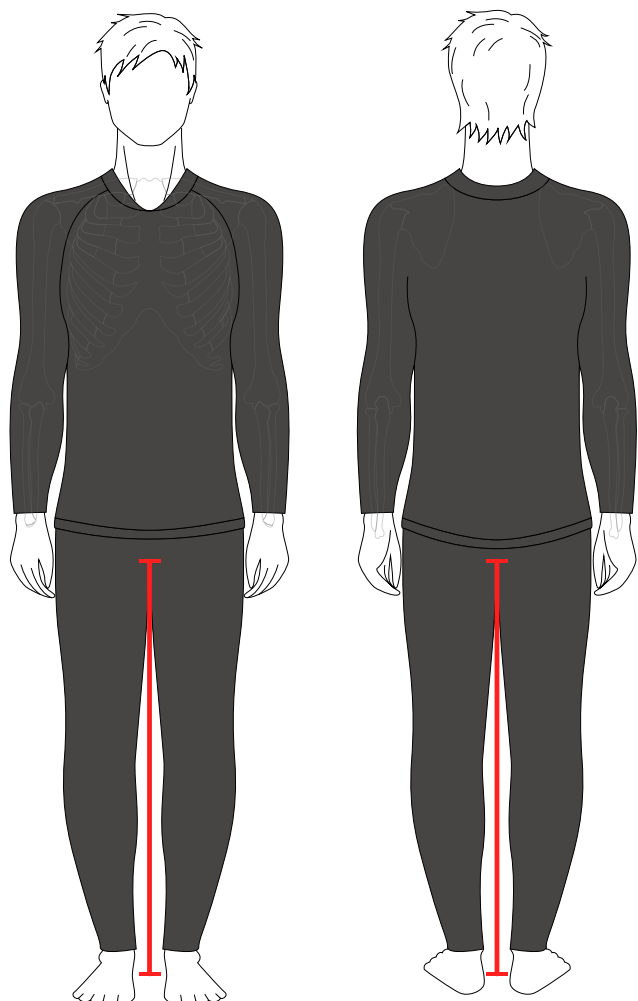
 cm

▲ At the widest point of the calf.

PART 1

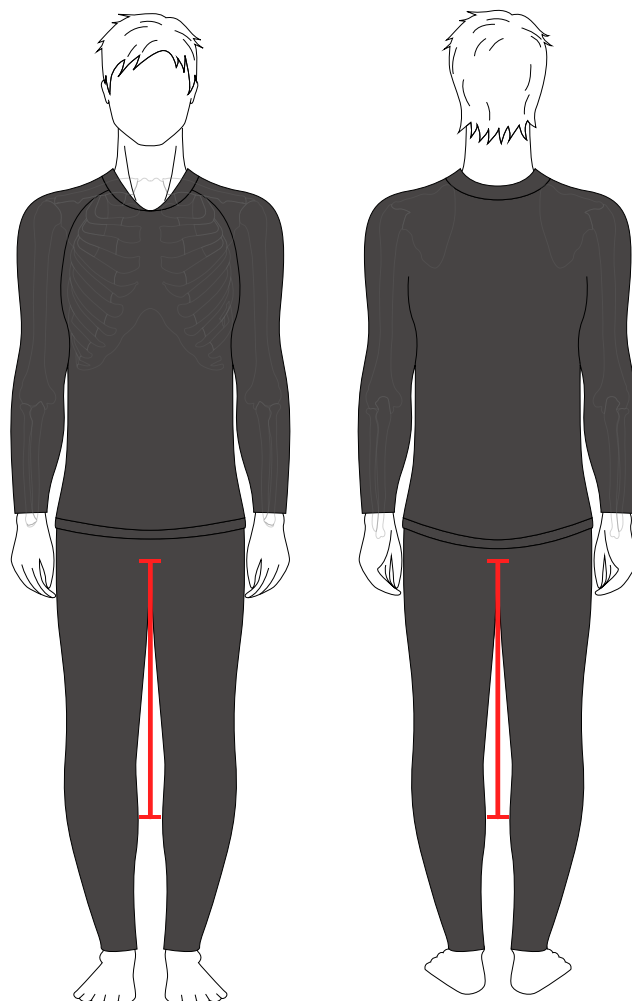
MEASUREMENTS WITH THE HEAVIEST UNDERSUIT

17 Legs height

 cm

▲ With the pants up and properly positioned between the legs, measure from the position of the pants in the crotch (without pushing up), down to the ground.

18 Calf height

 cm

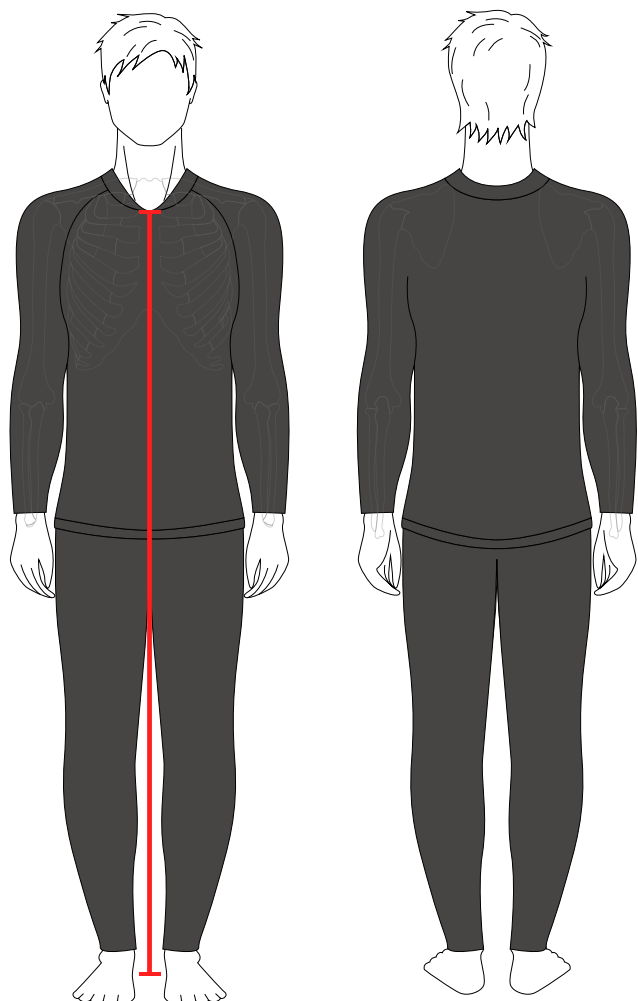
▲ With the pants up and properly positioned between the legs, measure from the position of the pants in the crotch (without pushing up), down to the calf.

PART 1

MEASUREMENTS WITH THE HEAVIEST UNDERSUIT

19 Body height

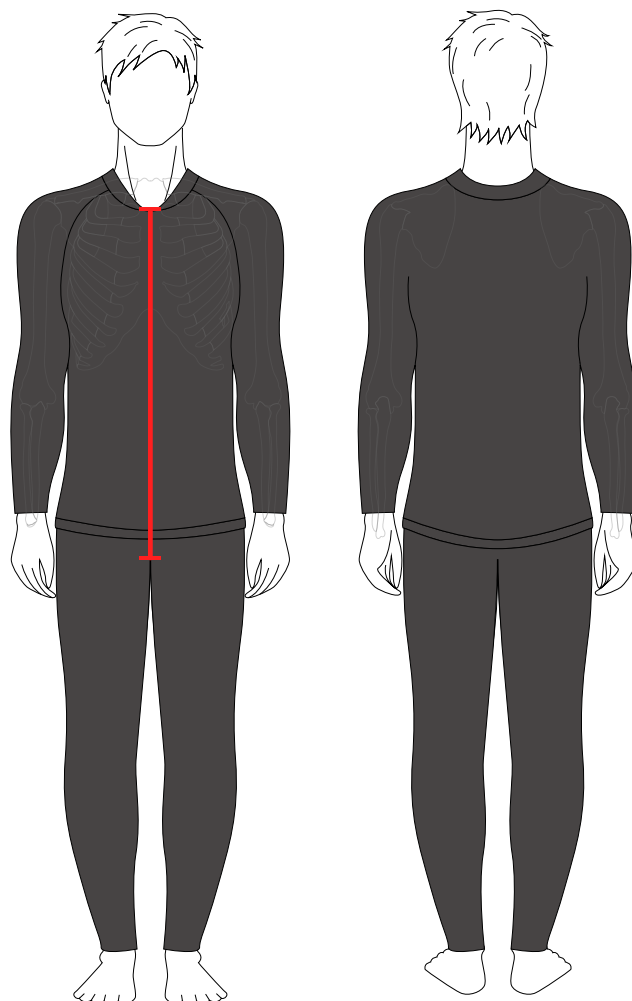
	cm
--	----



▲ From the beginning of the sternum down to the ground, measuring tape taut.

20 Trunk height

	cm
--	----

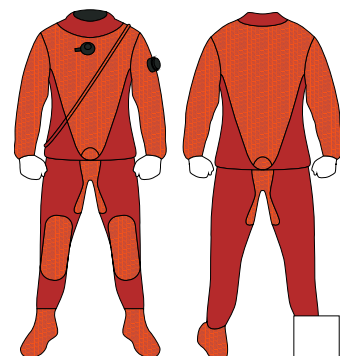
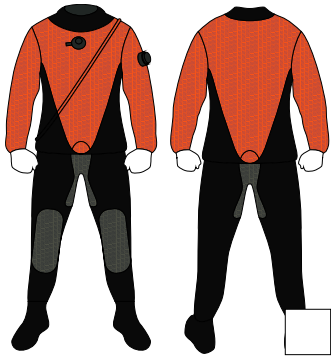
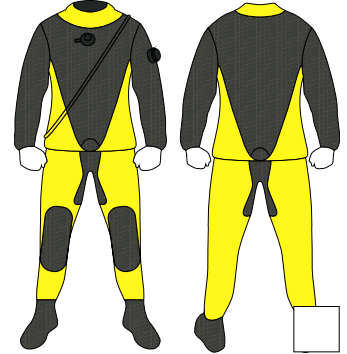
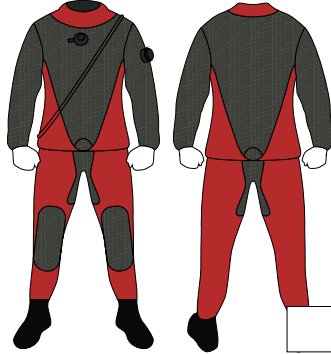
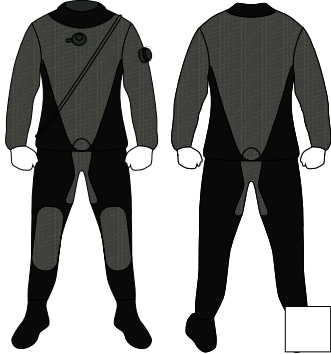


▲ From the beginning of the sternum down to the crotch, measuring tape taut.

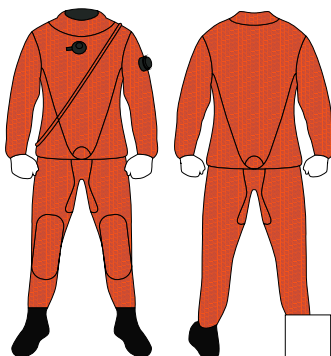
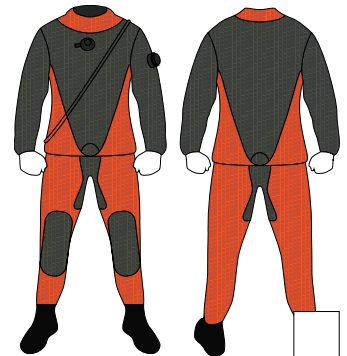
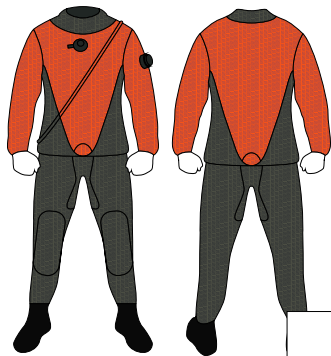
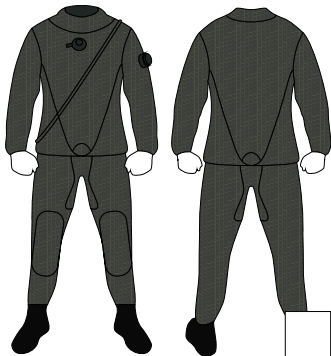
PART 3

COLORS

Neoprene Classic Kevlar®



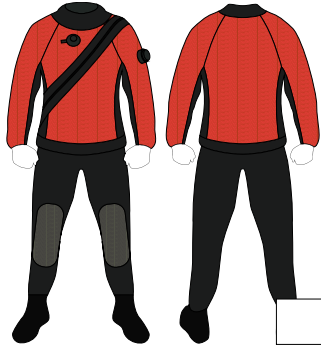
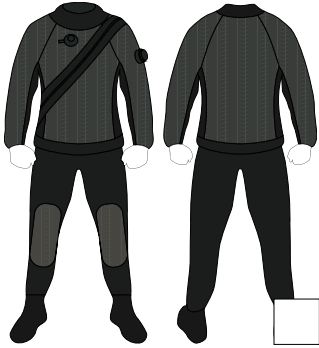
Neoprene Kevlar® Pro



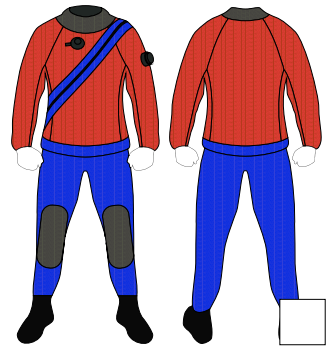
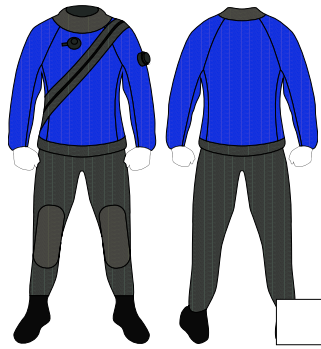
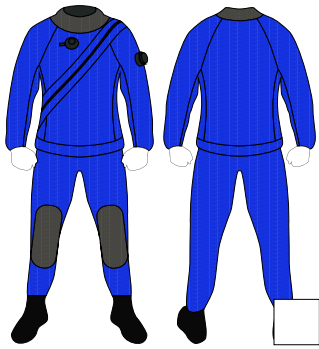
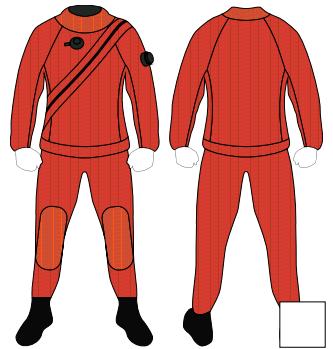
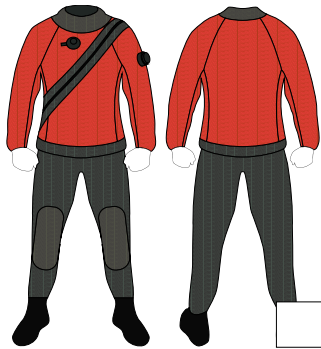
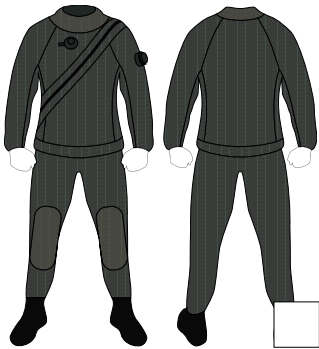
PART 3

COLORS

TNT Classic



TNT Pro



PART 3

COMMENTS

Please, let us know if you have any special desire regarding the measurements, the options, the colors or the delivery of the drysuit.



PART 4

CONTACT / ADDRESS

Title

First name

Last name

E-mail

Phone

Company

Street

Street 2

City

ZIP

State

Country

