



**APEX REAR SEAT FRAME
ASSEMBLY GUIDE**



THANK YOU FOR PURCHASING A

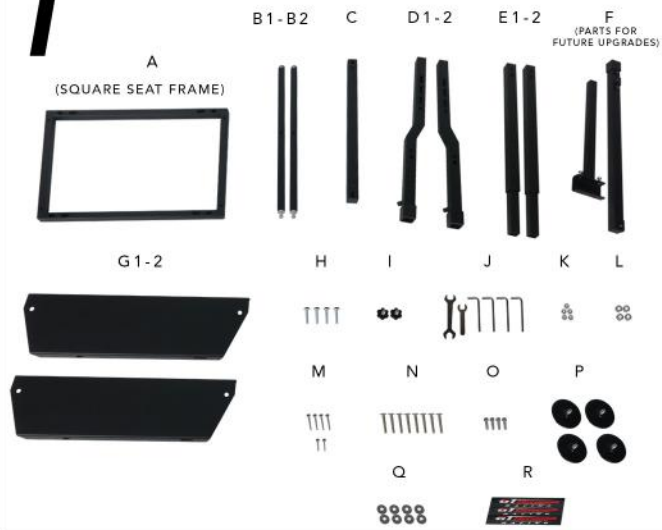
GT Omega

APEX REAR SEAT FRAME

IF YOU REQUIRE ANY ASSISTANCE PLEASE
GET IN TOUCH THROUGH OUR CONTACT FORM ON:

www.gtomega.com

1 WHAT'S IN THE BOX?



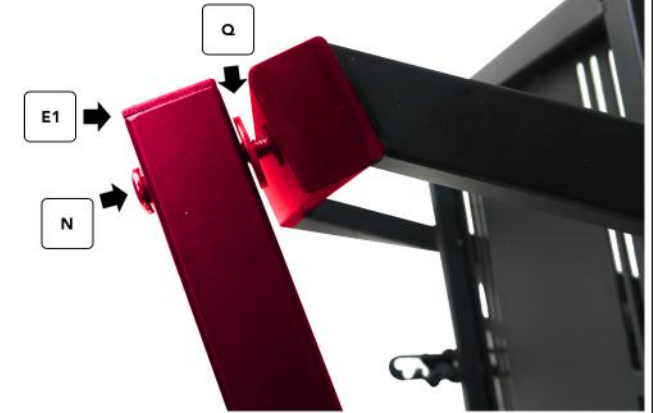
2

LAY THE APEX WHEEL STAND ON ITS SIDE. THIS IS THE EASIEST WAY TO CONNECT THE APEX WHEEL STAND WITH THE APEX REAR SEAT FRAME.



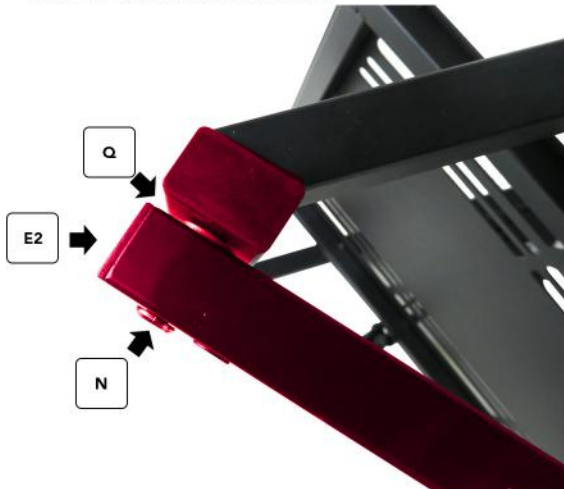
3

TAKE PART E1 AND PUT THROUGH SCREW N AT THE FRONT OF YOUR APEX WHEEL STAND, PLEASE A SPACER (Q) ON THE THREAD SIDE OF THE SCREW.



4

REPEAT THESE STEPS WITH PART E2 ON THE OTHER SIDE OF THE FRONT OF YOUR APEX WHEEL STAND.



5

SLOT PIECE D1 OVER THE TOP OF E1. MAKE SURE THE 2 DIAGONAL THREADS ARE FACING UP.



6

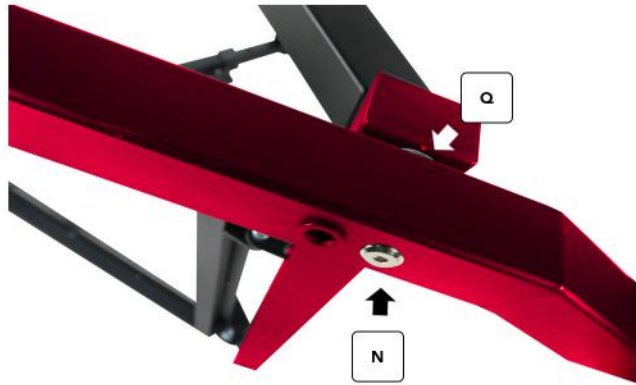
ENSURE THIS IS ALIGNED CORRECTLY WITH YOUR APEX WHEEL STAND.



ATTENTION: THIS PRODUCT IS MADE OF METAL, PLEASE HANDLE WITH CARE. INAPPROPRIATE USE MAY CAUSE DAMAGE TO THE USER AND PRODUCT.

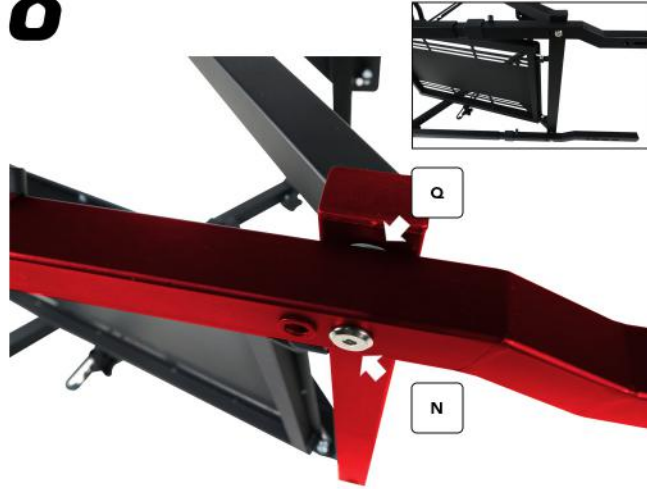
7

SCREW IN USING SCREW N AND A SPACER (Q).



8

REPEAT THESE STEPS FOR PART D2 ON THE OPPOSITE SIDE.



9

REMOVE THE SCREWS FROM B1 AND B2.



10

PARTIALLY SCREW B1 INTO PART G1. MAKE SURE G1'S MOUNTING HOLES HAVE THE LONG MOUNTING HOLES FOR THE SEAT AT THE FRONT.



11

DO THE SAME WITH B2 INTO PART G1.



12

CONNECT PART G2 ON THE OPPOSITE SIDE



ATTENTION: THIS PRODUCT IS MADE OF METAL, PLEASE HANDLE WITH CARE. INAPPROPRIATE USE MAY CAUSE DAMAGE TO THE USER AND PRODUCT.

13 ONCE ALL PARTS ARE CONNECTED, TIGHTEN EACH SCREW ONE BY ONE.



14 TURN THE CONNECTED PARTS UPSIDE DOWN. (B1-2,G1-2) ATTACH PART C USING SCREW N AND THE SPACER (Q). MAKE SURE THERE'S 4 HOLES FACING UPWARDS. THE TWO WITH THE THREAD ARE FOR THE FEET.



15 TIGHTEN UNTIL SECURE



16 YOUR APEX WHEEL STAND SHOULD CURRENTLY LOOK LIKE THIS



17 FLIP THE APEX WHEEL STAND OVER AND PLACE THE SEAT MOUNTS (B1-2,G1-2,C) ON TOP.

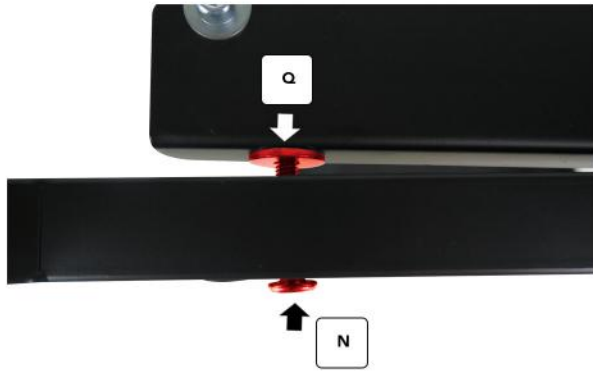


18 LINE UP THE HOLES TO YOUR PREFERENCE.



ATTENTION: THIS PRODUCT IS MADE OF METAL, PLEASE HANDLE WITH CARE. INAPPROPRIATE USE MAY CAUSE DAMAGE TO THE USER AND PRODUCT.

19 SCREW IN USING SCREW N AND THE SPACER (Q).



20 TIGHTEN UNTIL SECURE



21 REPEAT THESE STEPS FOR THE OPPOSITE SIDE.



22 ATTACH THE FEET FOR ALL GIVEN HOLES (P)



23 YOU CAN USE THE FEET TO ADJUST STABILITY AND HEIGHT OF THE COCKPIT



24 YOUR APEX WHEEL STAND + REAR SEAT FRAME WILL LOOK LIKE THIS



ATTENTION: THIS PRODUCT IS MADE OF METAL, PLEASE HANDLE WITH CARE. INAPPROPRIATE USE MAY CAUSE DAMAGE TO THE USER AND PRODUCT.

25

SCREW IN BOLTS O INTO THE GIVEN HOLES.



26

REPEAT THESE STEPS FOR THE OPPOSITE SIDE.

