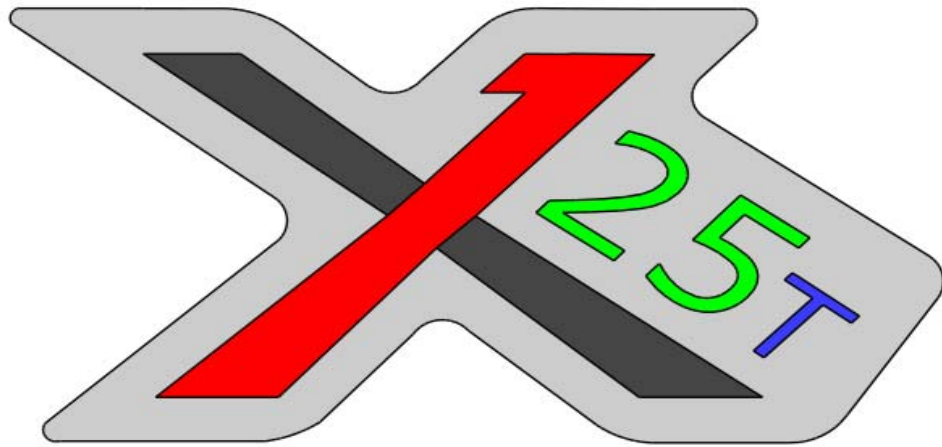
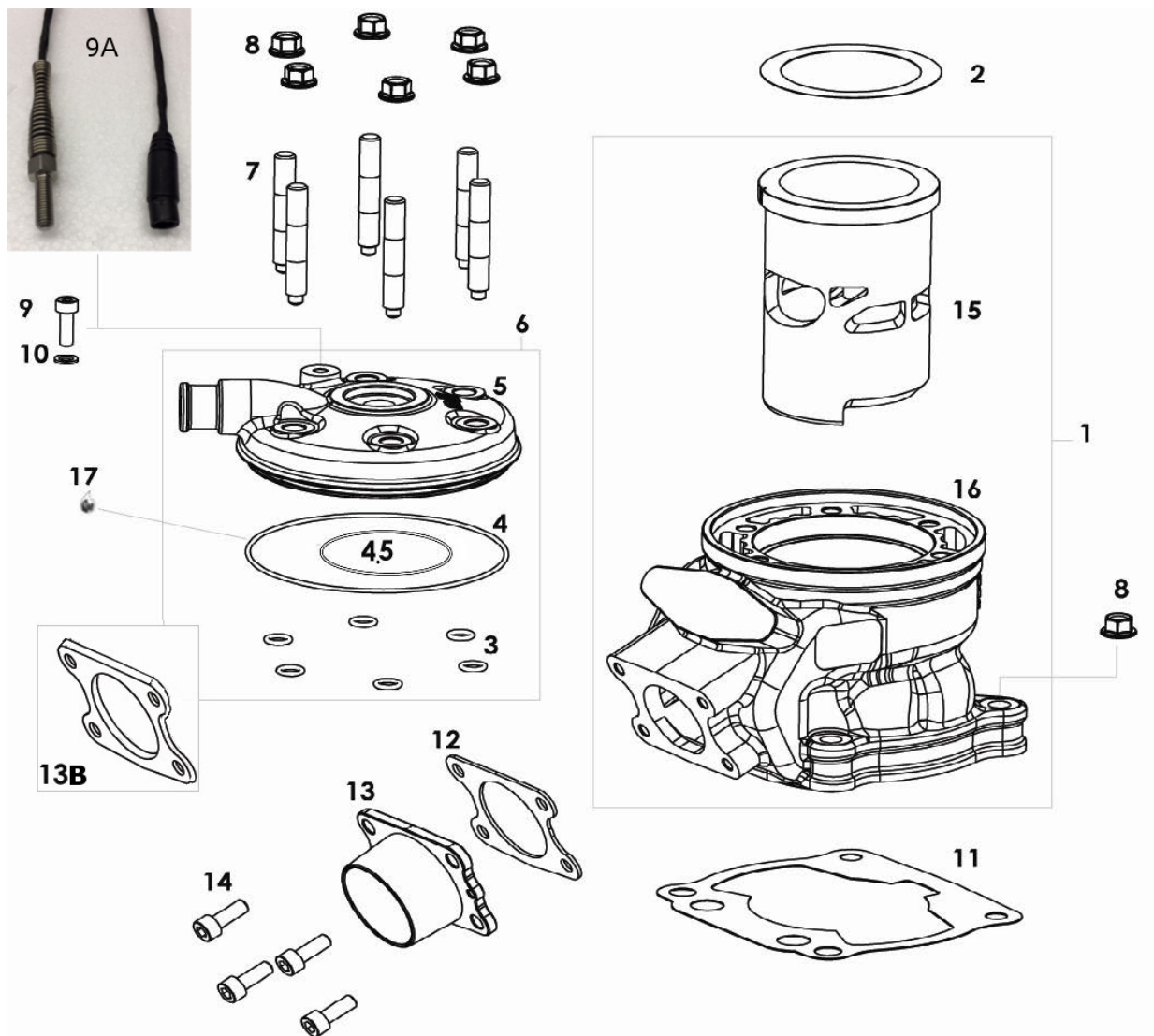


X125T-MX





testa e cilindro - Head and cylinder



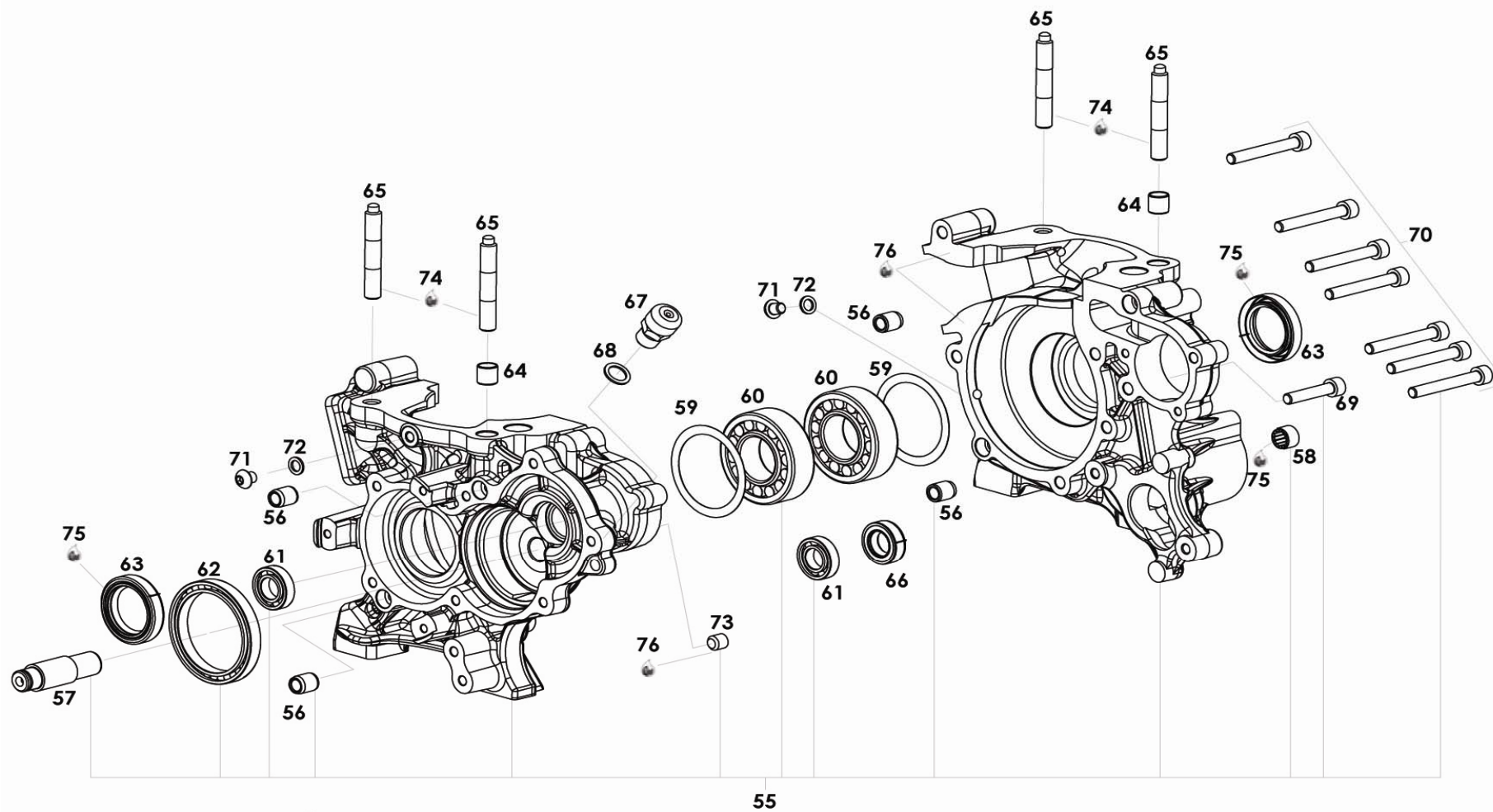


testa e cilindro - Head and cylinder

<i>fig.</i>	<i>code</i>	<i>Descrizione</i>	<i>Description</i>	<i>qt.</i>
1	P 12.399 00 11	Cilindro X125T Completo	X125T complete cylinder	1
2	A 10.071 00 00	Gne Testa 54/70 Sp. 0.05	Copper head gasket 54/70 Sp. 0.05	1
	A 10.153 00 00	Gne Testa 54/70 Sp. 0.10	Copper head gasket 54/70 Sp. 0.10	1
	A 10.154 00 00	Gne Testa 54/70 Sp. 0.20	Copper head gasket 54/70 Sp. 0.20	1
	A 10.155 00 00	Gne Testa 54/70 Sp. 0.30	Copper head gasket 54/70 Sp. 0.30	1
3	A 98.143 16 00	O-Ring testa	O.Ring for head stud	6
4	A 98.006 16 00	O-Ring testa	O-Ring for headÁ	1
4.5	A 98.024 16 00	O-Ring - Inner	O-Ring - Inner	1
5	P 12.400 11 00	Testa X125T verde	X125T head green	1
6	P12.403 11 95	Testa X125T Prigioniero	X125T complete head	1
7	A 90.406 00 00	M8 con puntale Dado in rame	M8 stud	6
8	A 98.151 00 00	Vite	Copper nut	10
9	A 98.003 24 52	Brugola Brunita	Screw	1
10	A 98.004 28 00	Rondella Rame	Copper washer	1
11	A 90.006 00 00	Guarnizione cilindro 0.10	Cylinder gasket 0.10	1
	A 90.420 00 00	Guarnizione cilindro 0.20	Cylinder gasket 0.20	1
	A 90.521 00 00	Guarnizione cilindro 0.30	Cylinder gasket 0.30	1
	A 90.522 00 00	Guarnizione cilindro 0.50	Cylinder gasket 0.50	1
12	A 10.156 00 00	Gne Scarico	Exhaust Gasket	1
13	A 10.132 33 11	Collettore Scarico X125T	X125T exhaust manifold	1
	P 12.262 43 11	Collettore Scarico X125T - 22mm	X125T 22mm restricted exhaust manifold	not included
	P 12.418 33 11	Collettore Scarico X125T - 25mm	X125T 25mm restricted exhaust manifold	not included
	P 12.419 33 11	Collettore Scarico X125T - 31mm	X125T 31mm restricted exhaust manifold	not included
13B	A 10.132 33 11-Spacer		Exhaust Manifold Spacer X125T *Optional	not included
14	A 98.008 24 51	Vite Brugola	Screw	4
15	P 12.397 12 11	Brunita Canna Cilindro	X125T cylinder liner	1
16	C 12.398 11 11	X125T Carcassa Cilindro	X125T cylinder barrel	1
17	A 90.197 00 00	X125T Grasso Xeramic	Xeramic Grease	not included
	#9A - 3CVTRES001	- MyChron Cylinder Head Water Temperature Sensor		not included



basamento - crankcase



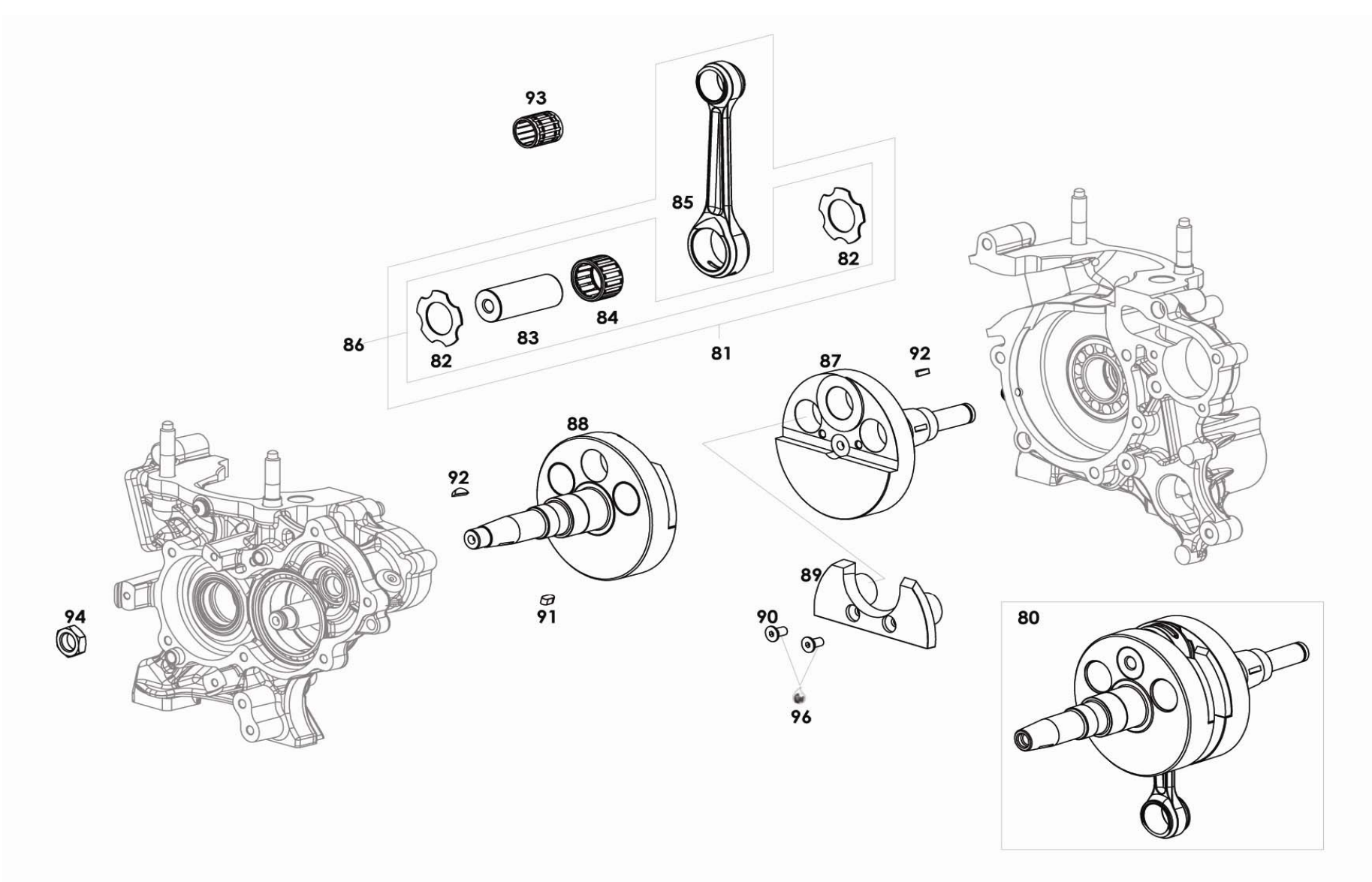


basamento - crankcase

<i>fig.</i>	<i>code</i>	<i>Descrizione</i>	<i>Description</i>	<i>qt.</i>
55	P 12.213 00 91	Basamento Completo XF cuscinetti a sfere	Compl.XF crankcase with ball roller bearings	1
56	A 90.022 00 00	Boccola di centraggio	Centering bush Ø6-10x11.5	4
57	A 12.014 34 00	Perno contralbero	Balance shaft pin	1
58	A 98.017 00 00	Gabbia a Rulli per bendix	Roller cage HK0808 for bendix	1
59	A 98.146 00 00	Rasam. In acciaio per cusc.	Main bearing washer 0.10 OPTIONAL	2
	A 98.147 00 00	Rasam. In acciaio per cusc.	Main bearing washer 0.15 OPTIONAL	2
	A 98.148 00 00	Rasam. In acciaio per cusc.	Main bearing washer 0.20 OPTIONAL	2
	A 98.149 00 00	Rasam. In acciaio per cusc.	Main bearing washer 0.30 OPTIONAL	2
60	A 98.084 00 00	Cuscinetto	Bearing	2
61	A 98.150 00 00	Cuscinetto	Bearing	2
62	A 90.598 00 00	Cuscinetto	Bearing	1
63	A 90.020 00 00	Anello di tenuta	Oil seal	2
64	A 90.021 00 00	Boccola di centraggio	Centering bush	2
65	A 90.406 00 00	Prigioniero M8 con puntale	M8 stud	4
66	A 90.599 00 00	Anello di tenuta molla INOX Valvola	Oil seal INOX Spring Oil	1
67	A 90.045 00 00	Sfiato Olio	breather cap	1
68	A 98.162 28 00	Rondella in Allum.	Alumin. washer	1
69	A 98.031 24 51	Vite Brugola	Screw	1
70	A 98.010 24 51	Vite Brugola	Screw	7
71	A 98.164 24 51	Vite Brugola	Screw	2
72	A 98.076 28 00	Rondella in rame	Copper washer	2
73	A 98.165 24 00	Grano testa piatta	Grub Screw	1
74	A 90.199 00 00	Frenafilletti medio	Medium thread locking	not included
75	A 90.197 00 00	Grasso Xeramic	Xeramic grease	not included
76	A 90.411 00 00	Pasta ermetica Xeramic	Xeramic hermetic paste	not included



albero motore - crankshaft



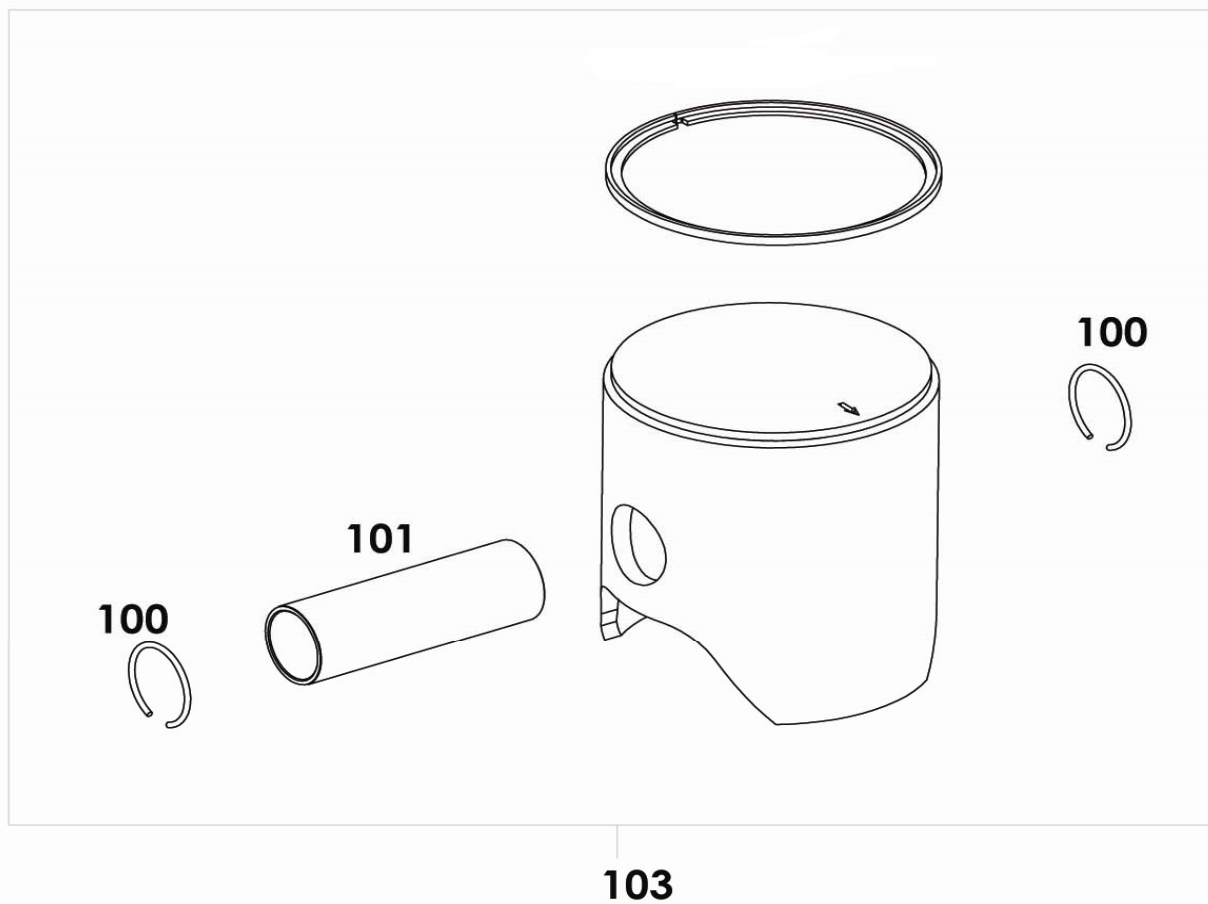


albero motore - crankshaft

<i>fig.</i>	<i>code</i>	<i>Descrizione</i>	<i>Description</i>	<i>qt.</i>
80	P 12.402 00 91	Albero Motore X125T Completo	X125T complete crankshaft	1
81	P 12.269 00 91	Gruppo Biella Completo X125T	X125T complete conrod kit	1
82	A 90.418 29 00	Rasamento Biella Argentato a stella Asse	Silvered conrod washer	2
83	A 12.224 34 00	Accoppiamento	Crankpin	1
84	A 98.021 00 00	Gabbia Testa Biella	Big end cage	1
85	A 12.035 24 00	Biella interasse 104	Conrod int. Dist. 104	1
86	P 12.270 00 91	Asse accoppiamento completo	Complete crankpin kit	1
87	C 12.216 24 13	Semialbero lato trasmissione	Half crankshaft trasm. Side	1
88	C 12.217 24 13	Semialbero lato accensione	Half crankshaft ign. Side	1
89	A 12.230 16 11	Guancetta albero motore	Stuffer for crankshaft	2
90	A 98.163 24 52	Vite svasata intaglio a croce	Screw flared	4
91	A 98.154 00 00	Chiavetta	Key	1
92	A 98.020 24 00	Linguetta disco	Disc key	2
93	A 98.022 00 00	Gabbia Piede Piella argentata	Small silvered end cage 1	1
94	A 20.151 53 52	Dado rotore	Rotor nut	1
95	A 90.198 00 00	Grasso Per Cuscinetti Xeramic	Xeramic Grease For Bearings	not included
96	A 90.199 00 00	Frenafiletto Medio	Medium Thread Locking	not included



pistone - piston





pistone - piston

<i>fig.</i>	<i>code</i>	<i>Descrizione</i>	<i>Description</i>	<i>qt.</i>
100	A 10.309 00 00	Anellino Ferma Spinotto	Piston Pin Clip	2
101	A 10.308 00 00	Spinotto Pistone	Piston Pin	1
103	A 10.311 00 00	Pistone Completo 53.83	Complete Piston 53,83	1
	A 10.311 00 00	Pistone Completo 53.84	Complete Piston 53,84	1
	A 10.312 00 00	Pistone Completo 53.85	Complete Piston 53,85	1
	A 10.312 50 00	Pistone Completo 53.86	Complete Piston 53,86	1
	A 10.313 00 00	Pistone Completo 53.87	Complete Piston 53,87	1
	A 10.313 50 00	Pistone Completo 53.88	Complete Piston 53,88	1
	A 10.314 00 00	Pistone Completo 53.89	Complete Piston 53,89	1
	A 10.314 50 00	Pistone Completo 53.90	Complete Piston 53,90	1
	A 10.315 00 00	Pistone Completo 53.91	Complete Piston 53,91	1

NOTE:

pistone

piston

53.83

53.85

53.87

53.89

53.91

segmento montato

*ring mounted****

53.95

53.95

54.01

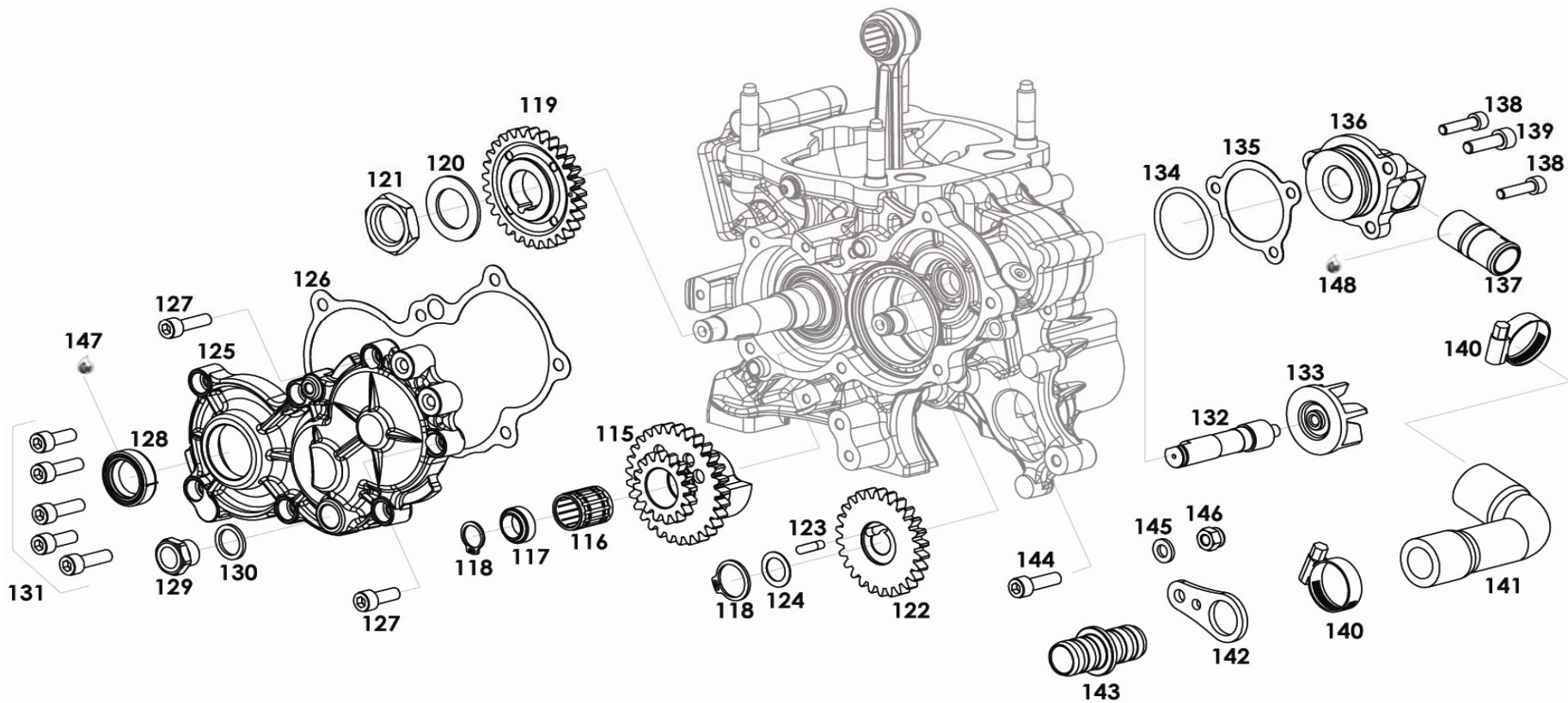
54.01

54.01

***Ring not available separately from piston kit



contralbero - balancing shaft



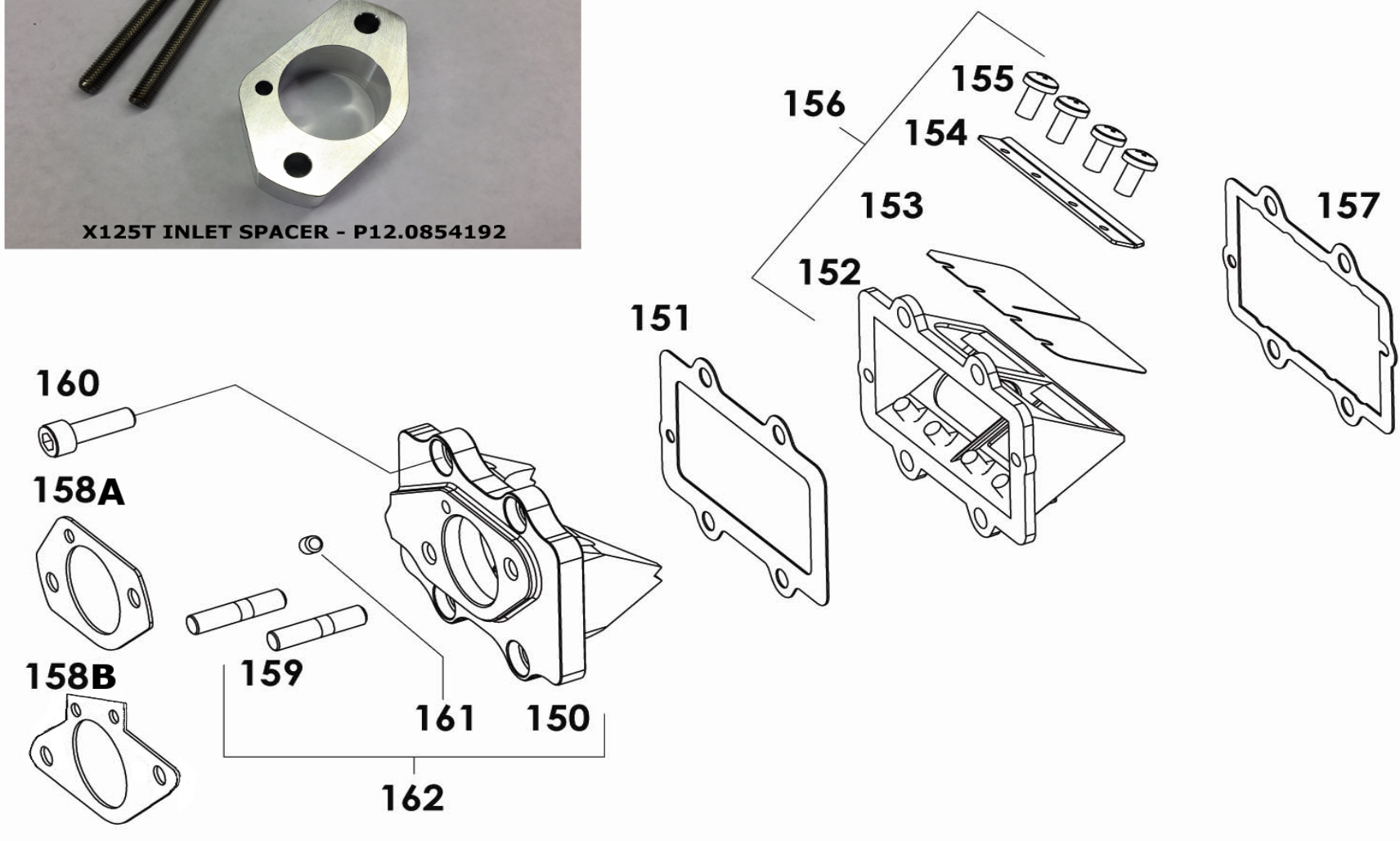


contralbero - balancing shaft

<i>fig.</i>	<i>code</i>	<i>Descrizione</i>	<i>Description</i>	<i>qt.</i>
115	P 12.064 00 91	Contralbero	Balancing shaft Gear	1
116	A 98.022 00 00	Gabbia argentata	Silvered cage	1
117	A 12.090 34 00	Spessore contralbero X125T	X125T balancing shaft Spacer	1
118	A 98.041 24 00	Seeger	Seeger	2
119	C 12.022 34 00	Ingranaggio albero motore	Crankshaft gear	1
120	P 10.105 00 11	Molla a tazza	Disc spring	1
121	A 90.416 43 00	Dado esagonale	Nut	1
122	C 12.043 36 00	Ingranaggio in plastica pompa acqua	Water pump plastic gear	1
123	A 98.155 00 00	Chiavetta	Key	1
124	A 98.161 00 00	Rasamento	Washer	1
125	A 12.063 11 11	Carter ingranaggi	Gear cover	1
126	A 12.062 00 00	Guarnizione coperchio ingranaggi	Gear cover gasket	1
127	A 98.008 24 51	Vite M6x16 brugola brunita	Screw	2
128	A 90.400 00 00	Anello tenuta	Oil seal	1
129	A 90.404 00 00	Spia Livello Olio	Oil level control cap	1
130	A 90.405 00 00	Guarn. spia liv. olio in all.	Alu level contr. cap gasket	1
131	A 98.075 24 51	Vite brugola brunita	Screw	5
132	A 12.091 34 53	Alberino pompa acqua cromato a spessore	Water pump cromed shaft	1
133	P 12.331 11 11	Girante pompa acqua in alluminio	Alum. water pump impeller	1
134	A 98.157 16 00	O-Ring NBR	O-Ring	1
135	A 12.134 00 00	Spessore coperchio pompa acqua	Gasket for Water Pump Cover	1
136	A 12.027 31 00	Coperchio pompa acqua	Water pump cover	1
137	C 90.289 73 52	Raccordo tubo acqua	Water fitting	1
138	A 98.047 24 51	Vite brugola brunita	Screw	2
139	A 98.160 24 51	Vite brugola brunita	Screw	1
140	A 98.169 00 00	Fascetta a vite in acciaio	Steel Band	2
141	A 12.185 00 00	Tubo acqua curvo	Water pipe	1
142	A 12.181 85 00	Supporto raccordo tubo supplementare	Water fitting support	1
143	P 12.182 31 11	Raccordo tubo acqua supplementare	Water fitting	1
144	A 98.096 24 51	Vite Brugola Brunita	Screw	1
145	A 98.007 23 00	Rondella	Washer	1
146	A 98.168 24 00	Dado Autobloccante basso	Nut	1
147	A 90.197 00 00	Xeramic	Xeramic Grease	not included
148	A 90.200 00 00	Sigillante per filetti	Thread seal for thread sealing	not included



immissione - inlet



**Dellorto Option on page 29

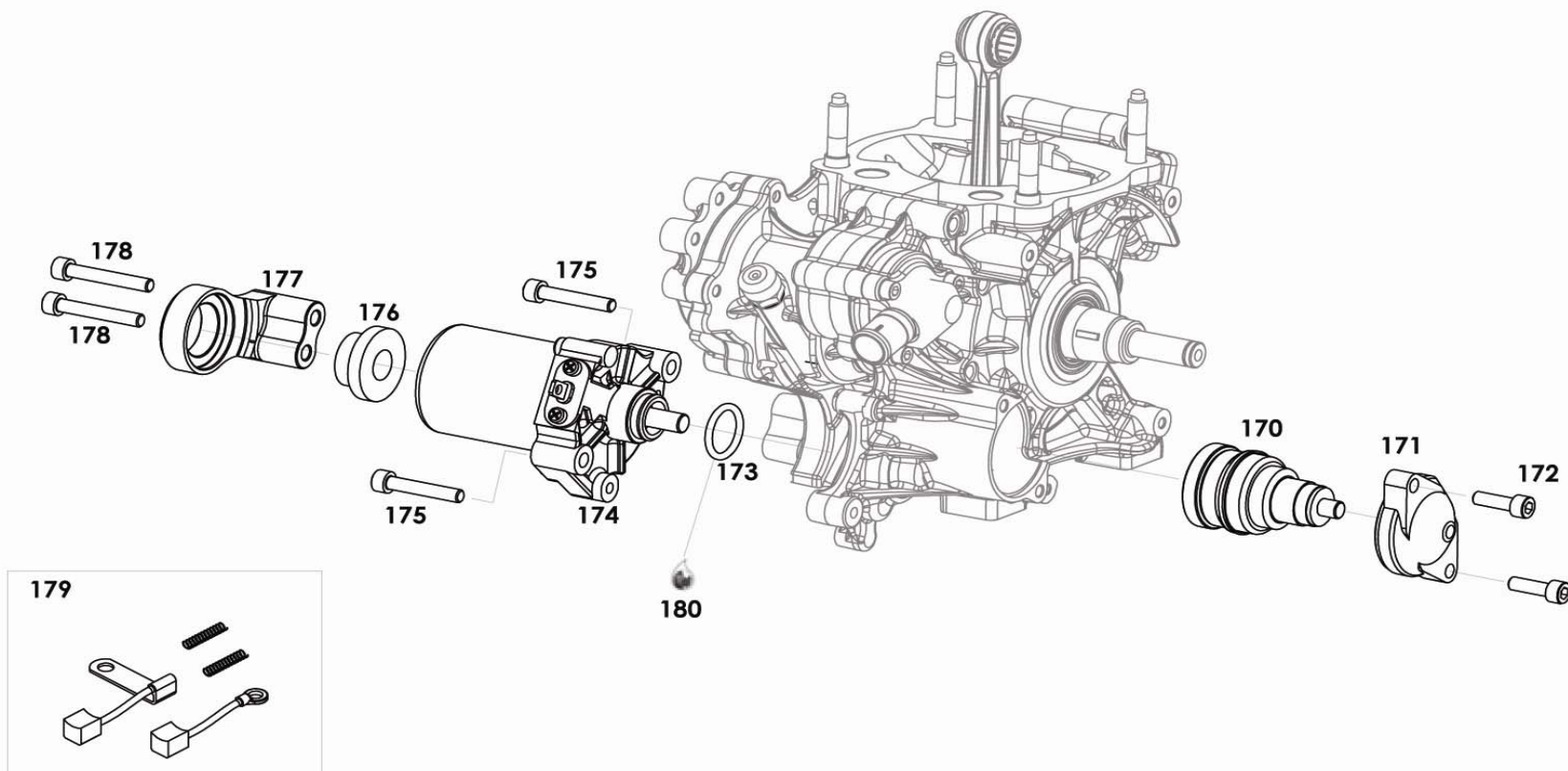


immissione - inlet

<i>fig.</i>	<i>code</i>	<i>Descrizione</i>	<i>Description</i>	<i>qt.</i>
150	P 12.085 41 91	Convogliatore X125T	X125T Induction Manifold Induction	1
151	A 90.409 00 00	Gne Convogliatore	Manifold gasket	1
152	A 10.092 00 00	Supporto Lamelle	Reed box	1
153	A 90.047 00 00	Petalo 0.25	Petal/Reed 0.25	2
154	A 90.046 00 00	Ferma Lamelle	Lock plate for reeds	2
155	A 98.238 00 00	Vite Fissaggio Lamelle	Fixing reeds screw	8
156	A 10.091 00 00	Gruppo lamelle	Reeds valve group	1
157	A 90.540 00 00	Gne Pacco Lamelle	Crankcase/Manifold gasket X125T	1
158A	A 10.130 00 00	Guarnizione carburatore X125T Prigioniero	Carburettor gasket (for 27mm Carb)	1
158B	IM-10360A	Guarnizione carburatore X125T Prigioniero	Carburettor gasket (for 23mm Carb)	1
159	A 98.033 24 00	prigioniero	Carb. Fixing stud	2
160	A 98.075 24 51	Vite Brugola Brunita	Screw	4
161	A 98.206 24 00	Grano	Screw without head	1
162	P 12.280 00 91	Convogliatore X125T completo di prigioniero	X125T complete induction manifold	1



avviamento elettrico - electric starter



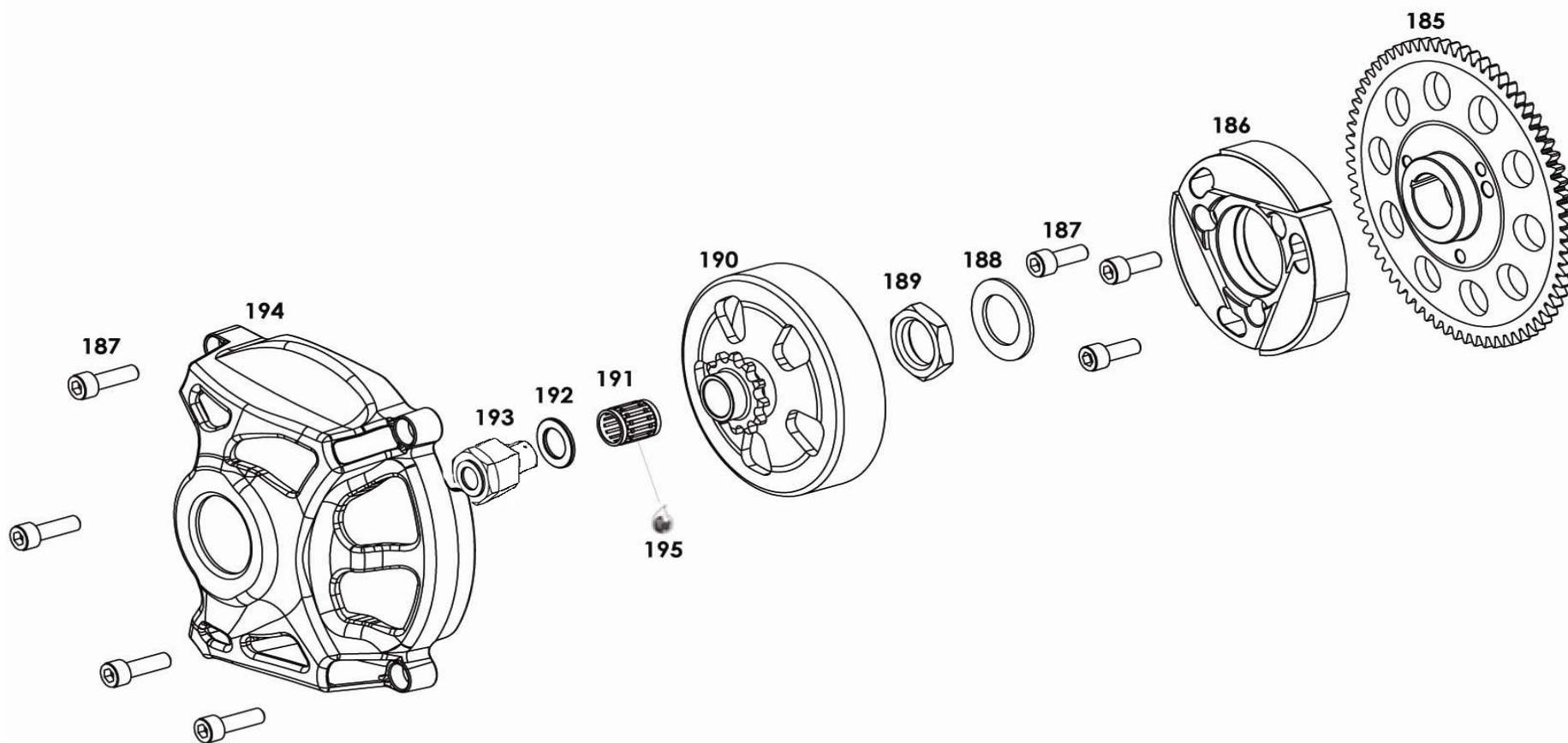


avviamento elettrico - electric starter

<i>fig.</i>	<i>code</i>	<i>Descrizione</i>	<i>Description</i>	<i>qt.</i>
170	A 90.041 00 00	Bendix - Rinvio Avviam.	Bendix - counter shaft	1
171	A 90.399 00 00	Coperchio bendix Rotax	Bendix cover	1
172	A 98.029 24 51	Vite	Screw	2
173	A 98.044 16 00	O-Ring mot. Avviamento	O-Ring electr. Starter	1
174	A 90.040 00 00	Motorino avviamento	Electric motor	1
175	A 98.063 24 51	Vite Brugola Brunita	Screw	2
176	A 23.012 16 00	Gommino supporto motorino avviamento	Rubber for starter motor support	1
177	A 12.039 41 00	Supporto motorino avviamento	Starter motor support	1
178	A 98.081 24 51	Vite Brugola Brunita	Screw	2
179	A 90.282 00 00	Kit spazzole motorino avviamento	Starter brushes kit	1
180	A 90.197 00 00	Grasso Xeramic	Xeramic grease	not included



gruppo frizione - clutch group



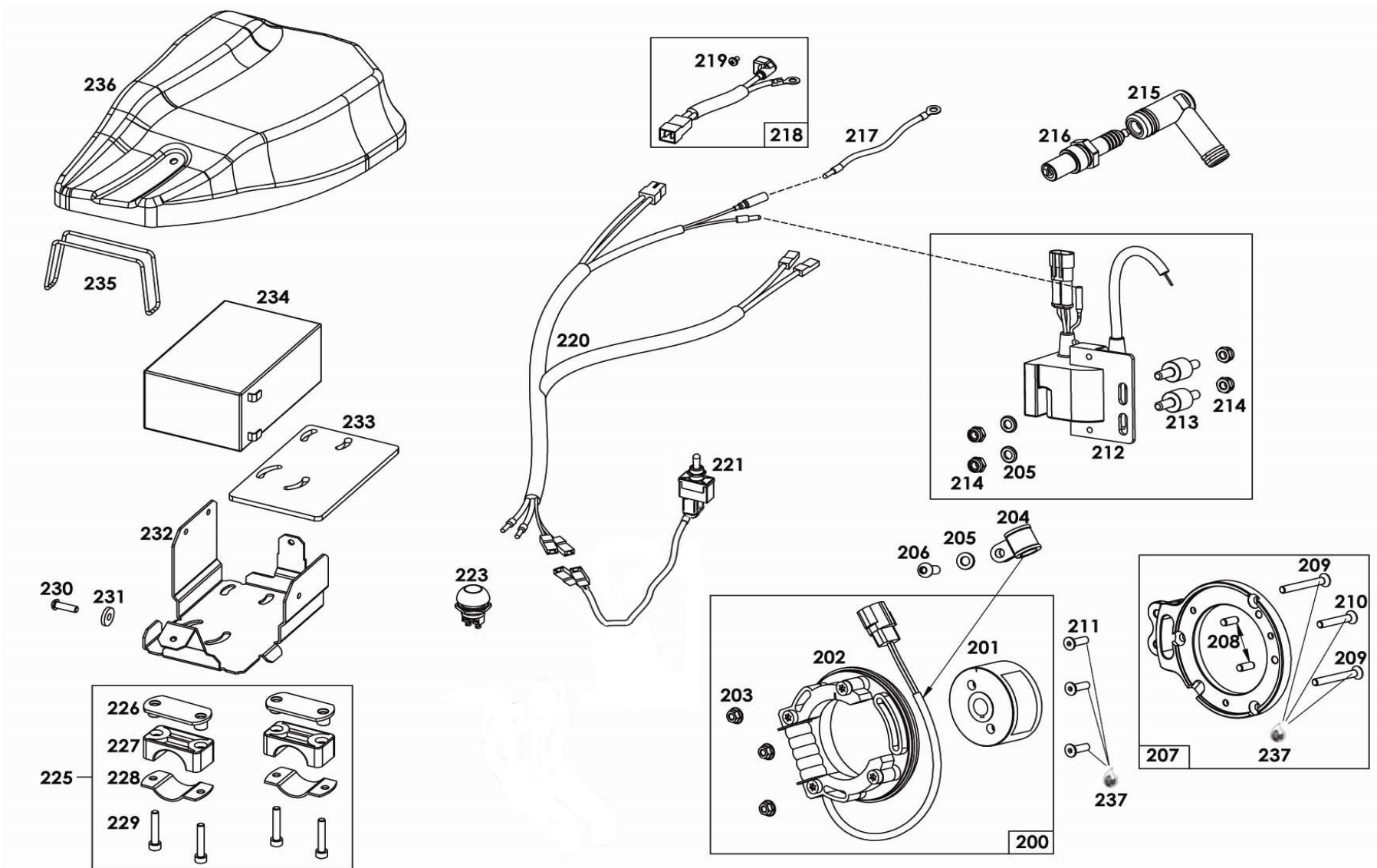


gruppo frizione - clutch group

<i>fig.</i>	<i>code</i>	<i>Descrizione</i>	<i>Description</i>	<i>qt.</i>
185	A 12.100 34 00	Corona avviamento in acciaio Z70	Steel Z70 starter wheel	1
186	A 10.239 00 00	Corpo frizione	Body clutch	1
187	A 98.008 24 51	Vite Brugola brunita Molla a tazza	Screw	1
188	P 10.105 00 11	Dado esagonale	Disc spring	7
189	A 90.416 43 00	Dado Frizione	Nut	1
190	C10.350 34 12	Campana frizione monopezzo Z10	Clutch drum one piece Z10	1
	C10.337 34 12	Campana frizione monopezzo Z11	Clutch drum one piece Z11	1
	A 10.325 34 00	Campana frizione monopezzo Z12	Clutch drum one piece Z12	1
	A 12.145 34 00	Campana frizione monopezzo Z13	Clutch drum one piece Z13	1
	P10.351 34 11	Campana frizione monopezzo Z16	Clutch drum one piece Z16	1
	191	A 98.037 00 00	Gabbia a rulli	Roller cage
192	A90.624 00 00	Rulli Rondella	Clutch washer	1
193	A90.454 00 00	Dado Campana CH. 17	Clutch Nut 17 Hex	1
194	A 12.036 16 00	Carter frizione	Clutch cover	1
195	A 90.198 00 00	Grasso per cuscinetti xeramic	Xeramic Grease for Bearings	not included



cablaggio - wiring





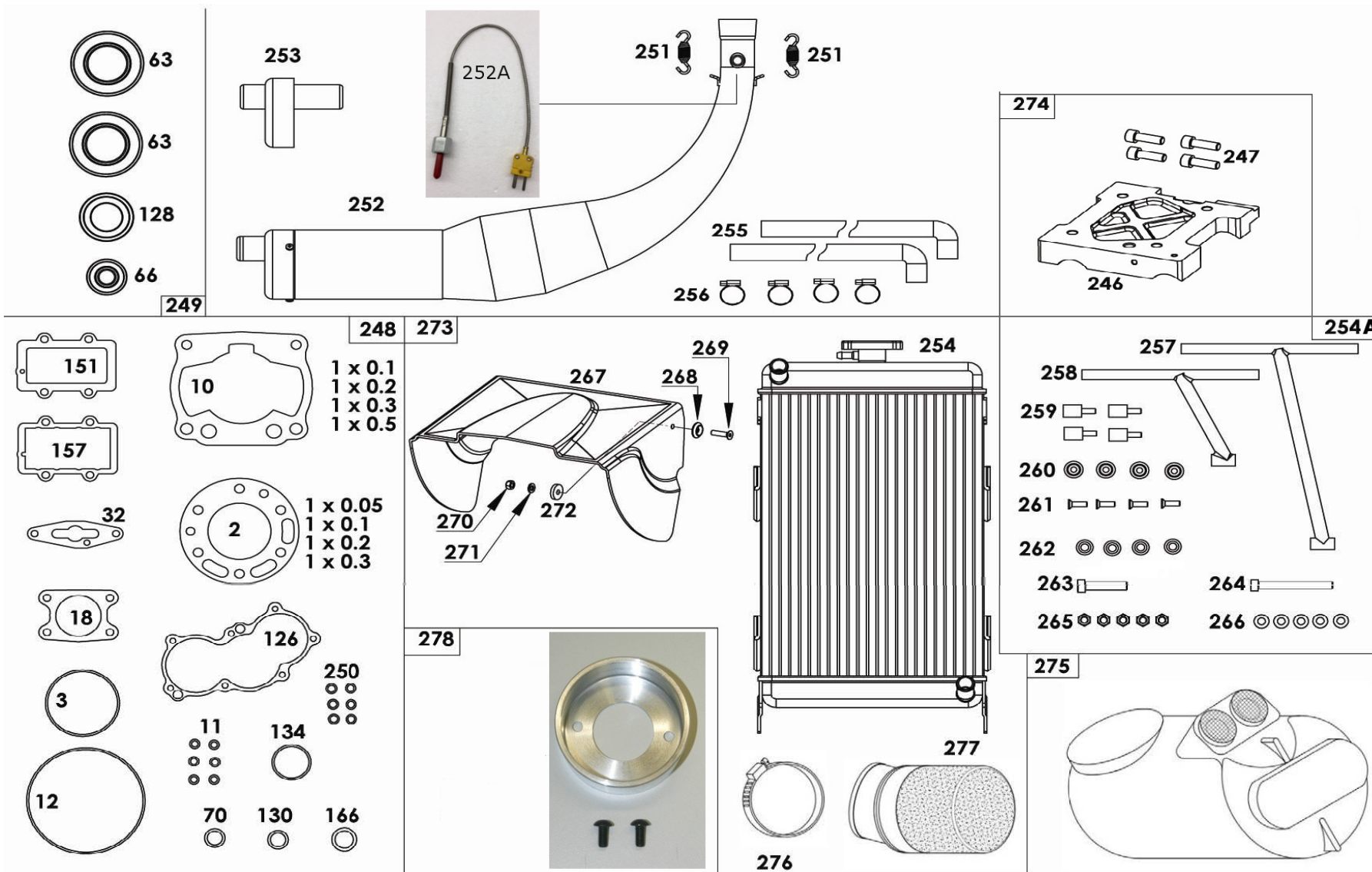
cablaggio - wiring

<i>fig.</i>	<i>code</i>	<i>description</i>	<i>descrizione</i>	<i>Q.ty</i>
200	A 90.582 00 95	Complete Ignition PVL SoniK	Accensione completa PVL Sonik Rotore	1
201	A 90.583 00 00	PVL rotor	PVL	1
202	A 90.584 00 00	PVL stator	Statore PVL	1
203	A 98.212 00 00	Flanged Nut	Dado flangiato	3
204	A 98.034 00 00	Cable clamp	Fascetta fermatubo	1
205	A 98.007 23 00	Washer	Rondella	3
206	A 98.064 24 00	Rounded Screw	Vite TCBEI(Brugola Bombata)	2
207	P 12.287 00 91	Complete Stator and coil support Pin	Flangia attacco statore e bobina	1
208	A 98.213 00 00	Plug	Spina	1
209	A 98.215 24 52	Screw TSEI	Vite TSEI (Svasata)	2
210	A 98.214 24 52	Screw TSEI	Vite TSEI (Svasata)	1
211	A 98.163 24 52	Screw Philips flared	Vite (svas. intaglio a croce)	3
212	A 90.585 00 00	PVL coil with hour meter counter	Bobina PVL con contaore	1
213	A 90.050 00 00	Silentblock	Silentblock	2
214	A 98.094 24 00	Self locking nut	Dado autobloccante	4
215	A 90.049 00 00	PVL connection spark plug boot	Pipetta candela PVL	1
216	A 90.036 00 00	Spark-Plug NGK BR10 EG Ground	Candela NGK BR10 EG	1
217	A 90.589 00 00	cabla for switch-off	cavo massa per interruttore di STOP	1
218	A 90.554 00 00	Starter motor connector	Connettore Motorino Avviamento Vite	1
219	A 98.221 24 52	Screw Philips	M4x6 (bomb. intaglio a croce) Cablaggio	1
220	A 90.555 00 00	Complete wiring	completo	1
221	A 12.393 00 00	Stop switch	Interruttore di STOP	1
223	A 90.558 00 00	Start button	Pulsante avviamento	1
225	P 10.236 00 91	Kit Support Ø32	Kit Attacco Supporto Batteria Ø32	1
226	A 90.073 00 52	Clamp Plate for Battery Supp.	Piastrina attacco Supp. Batt	2
227	A 90.074 16 00	Plastic Clamp for Battery Supp. Ø32	Attacco in Plastica Supp. Batt Ø32	2
228	A 90.075 83 52	Metal Clamp for Battery Supp. Allen	Attacco in Metallo Supp. Batt	2
229	A 98.070 24 52	Allen screw	Vite TCEI (Brugola)	4
230	A 98.244 00 00	Countersunk screw	Vite TSPEI(Brugola Suasata) Gommino	1
231	A 90.076 16 00	Rubber damper	Antivibrante	1
232	C 90.037 83 53	Battery support X125T	Supporto Batteria	1
233	A 90.083 00 00	Support battery sponge	Spugna Supporto Batteria	1
234	A 90.053 00 00	Battery 12V 9 Ah	Batteria 12V 9 Ah	not included
235	A 98.078 16 00	O-Ring (3400)	O-Ring (3400)	1
236	A 90.077 16 00	Battery support cover	Coperchio Supporto Batteria	1
237	A 90.199 00 00	Medium Thread Locking	Frenafilletti Medio	1





componenti - components





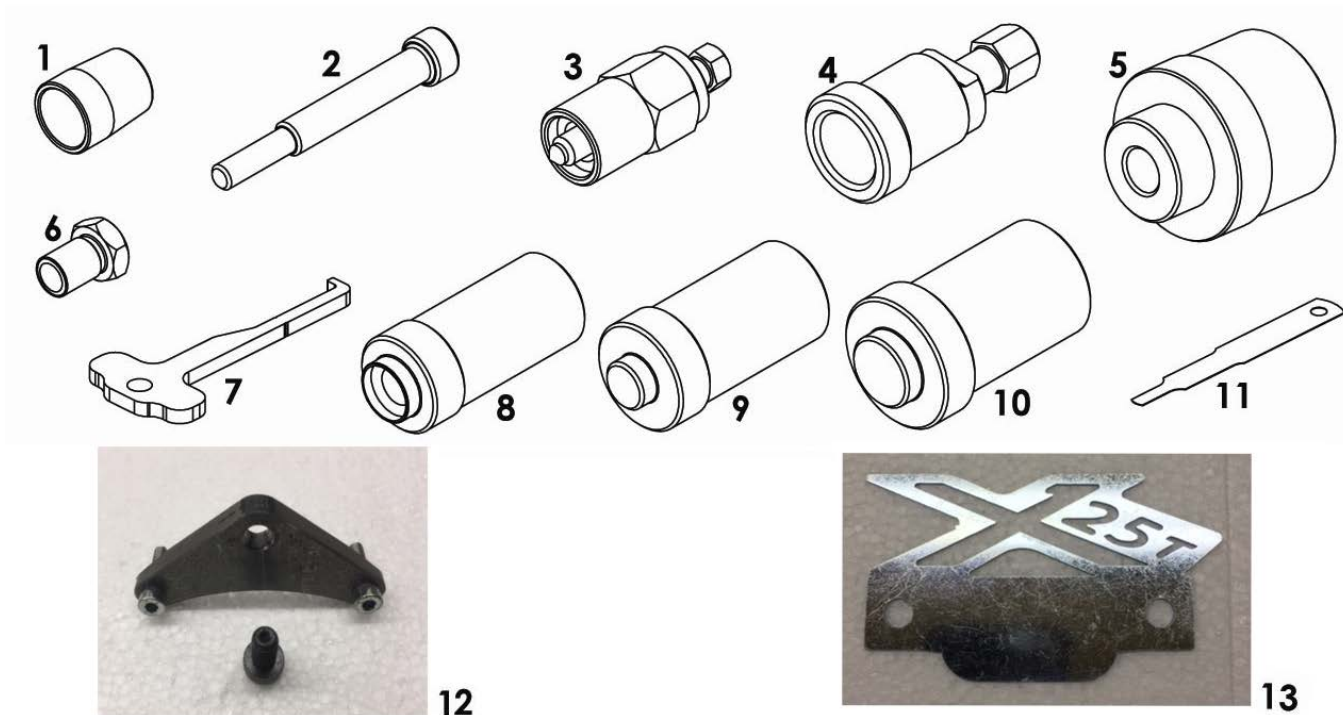
components * componenti

<i>fig.</i>	<i>code</i>	<i>description</i>	<i>descrizione</i>	<i>Q.ty</i>
246	A 12.117 11 00	Engine Mount 90/92	Piastra motore interasse 90/92	1
247	A 98.073 24 52	Screw	Vite TCEI	4
248	P 12.289 00 91	Sonik JUN/SEN Gaskets and O-Rings Kit	Kit Guarnizioni e O-Rings Sonik JUN-SEN	not included
249	P 12.068 00 91	Oil Seals Kit	Kit Anelli Tenuta	not included
250	A 90.419 00 00	Spacer for O-ring for head	Spessessore per Or prigioniero cilindro	6
251	A 90.196 00 00	Exhaust spring	Molla Marmitta	2
252	A 12.291 00 00	Sonik Junior/Senior/Mini exhaust	Marmitta Sonik Senior/Junior/Mini	1
253	A 90.080 00 00	Cromed Exhaust Cover	Coperchio Marmitta cromato	1
254	A 90.587 00 00	Radiator	Radiatore	1
254A	A 90.587 00 01	Radiator Bracket Kit	Radiatore Kit Supporto	1
255	A 90.434 00 00	Water pipe	Tubo acqua curvo	2
256	A 98.169 00 00	Steel band	Fascetta stringitubo	4
257	A 90.435 00 00	Radiator support long	Supp. Radiat. cromato lungo	1
258	A 90.436 00 00	Radiator support short	Supp. Radiat. cromato corto	1
259	A 90.437 00 00	Radiator silentblock	Antivibrante	4
260	A 90.438 00 00	Spacer	Spessore	4
261	A 98.245 00 00	Rounded screw	Vite TBEI (Bombata)	4
262	A 90.439 00 00	Spacer	Spess. In acciaio	4
263	A 98.170 00 00	Screw	Vite (brugola)	1
264	A 98.171 00 00	Screw	Vite (brugola)	1
265	A 98.173 00 00	Nut	Dado	4
266	A 98.172 00 00	Spring	Rondella	4
267	A 12.290 00 00	Flap for radiator	Deflettore per radiatore	1
268	A 90.586 00 00	Countersunk Spring	Rondella Svasata	2
269	A 98.211 24 52	Screw TSEI	Vite TSEI	2
270	A 98.112 24 00	Nut	Dado	2
271	A 98.007 23 00	Washer	Rondella	2
272	A 90.076 16 00	Rubber damper	Gommino Antivibrante	2
273	P 12.297 00 95	Radiator Hood Kit	Radiatore cappuccio	1
274	P 12.247 00 95	Engine mount Kit without clamps	Kit supporto motore senza cavallotti	not included
275	K560	Air Box Ø23	Filtro ScatolaØ23	1
276	X125.K125	Steel band	Fascetta stringitubo Ø60-80	1
277	X125.0202	Air Box Filter	Filtro aria	not included
278	X125.10771-C	Air Box Adapter "cup"	Adattatore del filtro aria	1

#252A 3CVGAS807T12 - Exhaust Temp MyChron Sensor



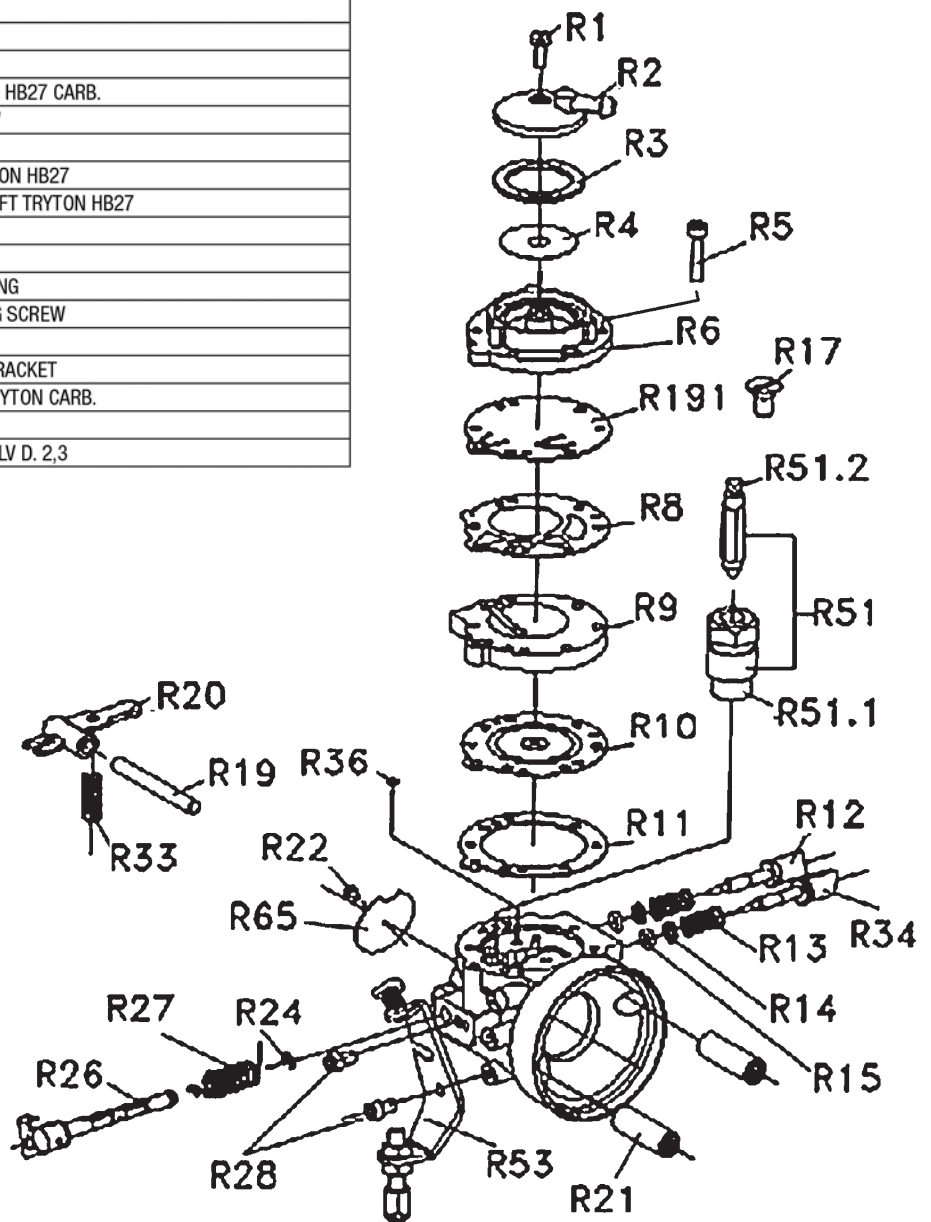
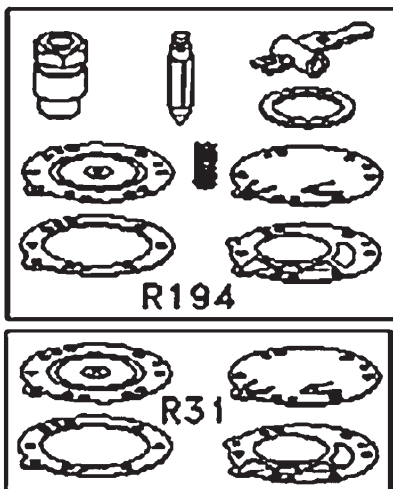
strumenti - tools



1	A 90.414 31 11	Boccola montaggio albero X125T	X125T Crankshaft Assembling Tool
2	A 90.269 00 00	Att. Montaggio spinotto	Piston Pin Assembling Tool
3	A 90.271 00 00	Estrattore accensione PVL	PVL Ignition Puller
4	P 10.250 00 91	Estrattore Frizione KF 09	KF 09 Clutch Puller
5	A 12.174 33 00	Boccola montaggio perno contralbero	XF Balance shaft pin Assembling Tool
6	A 90.270 00 00	Inserto omologato controllo volume	Spark-Plug Insert
7	A 90.417 83 00	Smonta paraolio pompa acqua	Water Pump Oil Seal disassembling Tool
8	A 90.274 00 00	Att. Montaggio anello tenuta pompa acqua	Water Pump Oil Seal Assembling Tool Oil
9	A 90.412 00 00	Att. Montaggio anello tenuta	Seal Assembling Tool
10	A 90.413 00 00	Att. Montaggio anello tenuta	Crankcase Oil Seal Assembling Tool Opening
11	A 90.523 85 00	Attrezzo controllo fasi	Angles Control Tool
12	P 12.187 00 91	Att. Bloccaggio corona avviamento completo	Starter wheel clamping Tool
13	S Z0.039 61		Head Profile Tech Gauge



FIG	PART NUMBER	DESCRIPTION
R001	10901	COVER SCREW TRYTON HB27
R002	10900	FILTER COVER TRYTON HB27
R003	10948A-R3	COVER GASKET
R004	10948A-R4	FUEL SCREEN FILTER HB27
R005	10948A-R5	BODY SCREW HB27
R008	10948A-R8	PUMP DIAPHRAGM GASKET
R009	10948A-R9	LOWER COVER
R010	10948A-R10	DIAPHRAGM HB27
R011	10953 MAIN	DIAPHRAGM GASKET
R012	10948A-R12	IDLE SETTING SCREW
R013	10948A-R13	SPRING - ADJUSTMENT SCREW
R014	10948A-R14	NEEDLE WASHER
R015	10948A-R15	O'RING ADJUSTMENT SCREW
R017	10948A-R17	LEVER SCREW
R019	10948A-R19	LEVER PIN
R020	10948A-R20	LEVER
R021	10897	STUDBOLT TRYTON HB27 CARB.
R022	10948A-R22	BUTTERFLY SCREW
R024	10948A-R24	LOCKER RING
R026	10954	SHAFT CARB. TRYTON HB27
R027	10956	SPRING CARB. SHAFT TRYTON HB27
R028	10948A-R28	BRACKET SCREW
R031	10948A-R31	GASKET KIT
R033	10948A-R33	ROCKER ARM SPRING
R034	10948A-R34	MAXIMUM SETTING SCREW
R051	10948A-R51	NEEDLE VALVE
R053	10948A-R53	SPRING HOLDER BRACKET
R065	10898	BUTTERFLY FOR TRYTON CARB.
R191	10948A-R191	PUMP DIAPHRAGM
R194	10948A-R194	KIT CARB. HB27 VALV D. 2,3





TILLOTSON HL-334B

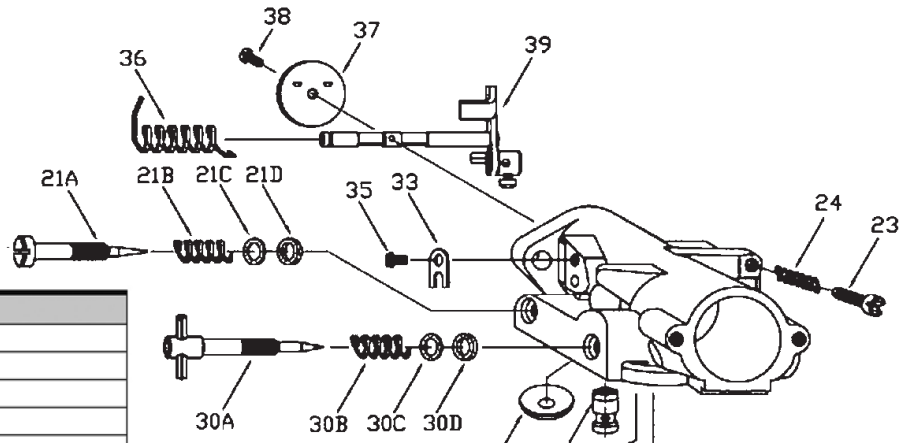
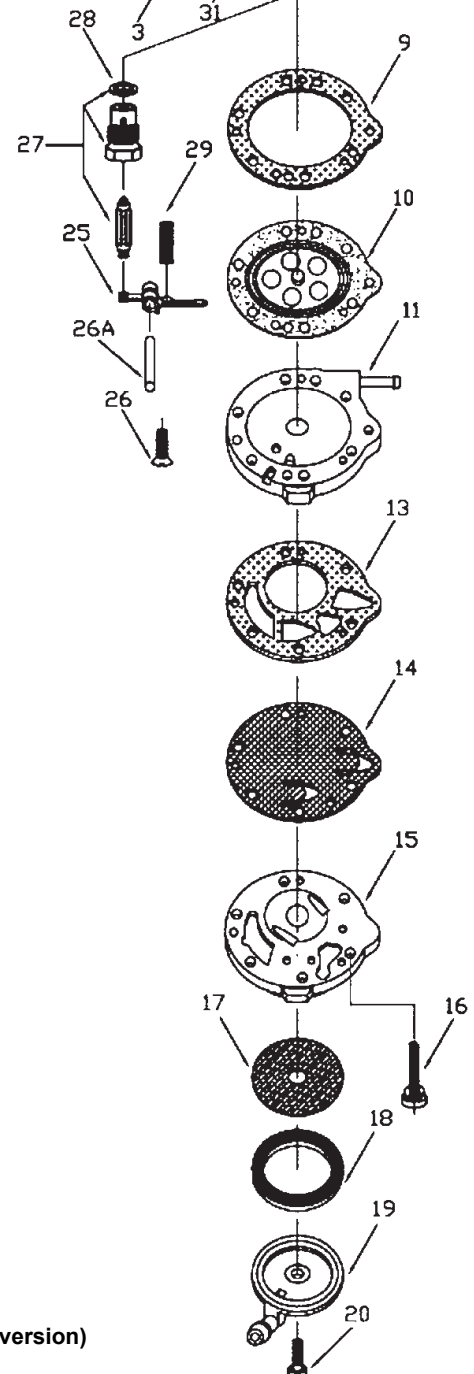


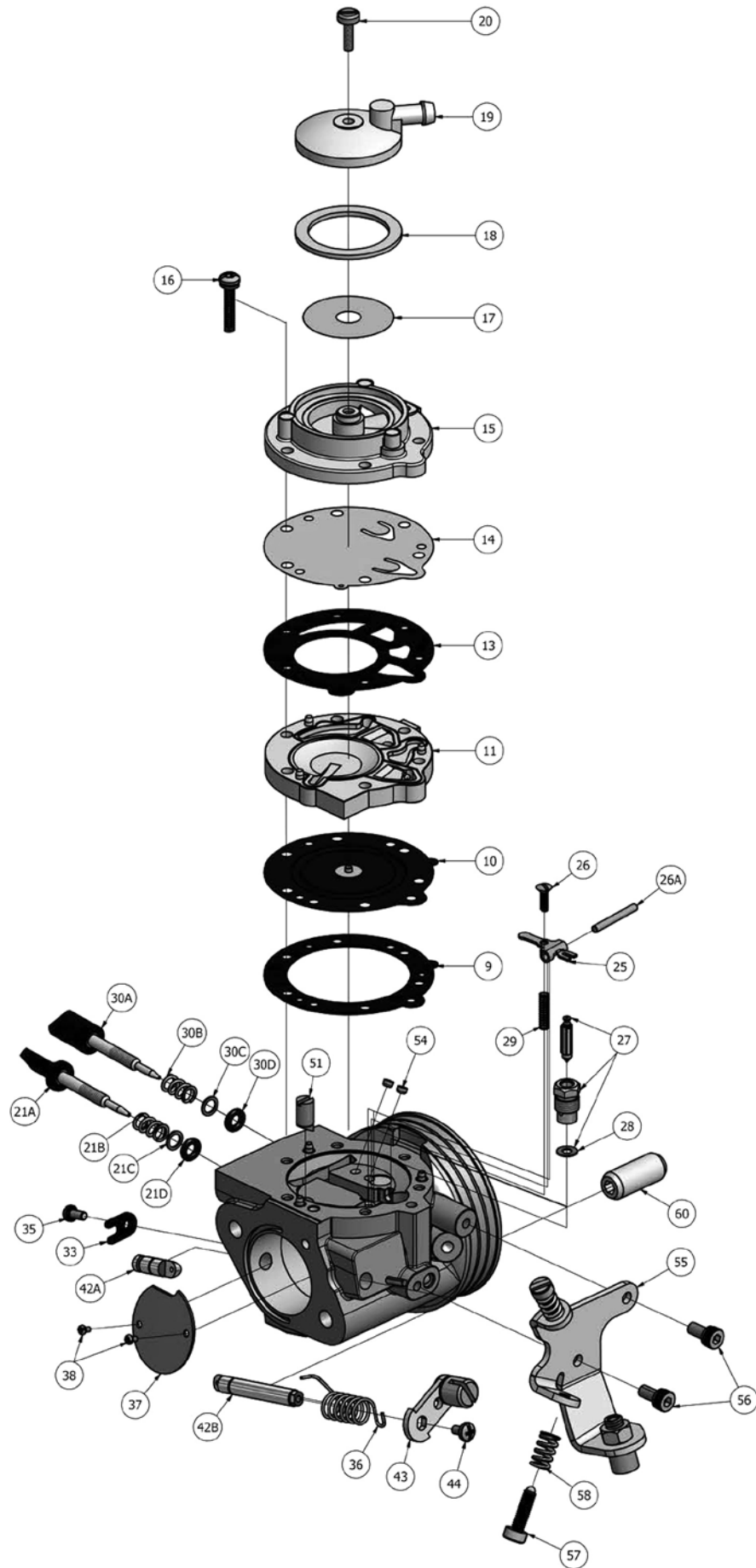
FIG	PART NUMBER	DESCRIPTION
3	179-55 *	BODY CHANNEL WELCH PLUG
9	16B-217 *+	DIAPHRAGM GASKET
10	237-600 *+	DIAPHRAGM
11	91A-275	DIAPHRAGM COVER HL-334AB
11B	91-1018	DIAPHRAGM COVER HL-334B
13	16B-223 *+	FUEL PUMP GASKET
14	237-141 *+	FUEL PUMP DIAPHRAGM
15	141-89	FUEL PUMP BODY
16	15C-51	FUEL PUMP BODY SKREW (6)
17	95-170	FUEL STRAINER SCREEN
18	16B-205 *	FUEL STRAINER COVER GASKET
19	91A-351	FUEL STRAINER COVER
20	15B-313	FUEL STRAINER COVER RETAINING SCREW
21A	43-388	IDLE MIXTURE SCREW
21B	24B-449	IDLE MIXTURE SCREW SPRING
21C	78A-256	IDLE MIXTURE SCREW WASHER
21D	44-270	IDLE MIXTURE SCREW PACKING
23	15C-9	IDLE SPEED SCREW
24	24B-131	IDLE SPEED SCREW SPRING
25	155A-27 *	INLET CONTROL LEVER
26	15B-329	INLET CONTROL LEVER FULCRUM SCREW
26A	32-79	INLET CONTROL LEVER FULCRUM PIN
27	233-710P *	INLET NEEDLE AND SEAT SET
28	16B-199 *	INLET SEAT GASKET
29	24B-299	INLET TENSION SPRING
30A	43-967	HIGH SPEED MIXTURE SCREW
30B	24B-449	HIGH SPEED MIXTURE SCREW SPRING
30C	78A-256	HIGH SPEED MIXTURE SCREW WASHER
30D	44-270	HIGH SPEED MIXTURE SCREW PACKING
31	363-503	NOZZLE CHECK VALVE
33	29-224	THROTTLE SHAFT CLIP
35	15C-19	THROTTLE SHAFT CLIP RETAINING SCREW
36	24B-381	THROTTLE SHAFT RETURN SPRING
37	14-407	THROTTLE SHUTTER
38	15C-29	THROTTLE SHUTTER SCREW
39	13-1894	THROTTLE SHAFT AND LEVER
	RK-117HL	REPAIR KIT
	DG-1HL	DIAPHRAGM AND GASKET SET



* Indicates contents of Repair Kit
 + Indicates contents of Diaphragm and Gasket Set



VA005-13 Carb Linkage Kit (minor version)





TILLOTSON HW-32A

ITEM	PART NO:	DESCRIPTION	QTY
9	+ * 16-B217	DIAPHRAGM GASKET	1
10	+ * 237-600	DIAPHRAGM	1
11	91A-275	DIAPHRAGM COVER	1
13	+ * 16-B392	FUEL PUMP GASKET	1
14	+ * 237-162	FUEL PUMP DIAPHRAGM	1
15	141-89	FUEL PUMP BODY	1
16	15C-51	FUEL PUMP BODY SCREW	6
17	95 - 170	FUEL STRAINER SCREEN	1
18	+ * 16-B205	FUEL STRAINER COVER GASKET	1
19	91-A251	FUEL STRAINER COVER	1
20	15-B313	FUEL STRAINER COVER RETAINING SCREW	1
21A	43-1029	IDLE MIXTURE SCREW	1
21B	24-B449	IDLE MIXTURE SCREW SPRING	1
21C	78A-256	IDLE MIXTURE SCREW WASHER	1
21D	44-361	IDLE MIXTURE SCREW PACKING	1
25	* 155A-27	INLET CONTROL LEVER	1
26	15-B329	FULCRUM LEVER SCREW	1
26A	32-79	FULCRUM LEVER PIN	1
27	* 233-721P	INLET NEEDLE & SEAT SET	1
28	16-B199	INLET SEAT GASKET	1
29	24-B299	INLET TENSION SPRING	1
30A	43-1030	HIGH SPEED MIXTURE SCREW	1
30B	24B-449	HIGH SPEED MIXTURE SCREW SPRING	1
30C	78A256	HIGH SPEED MIXTURE SCREW WASHER	1
30D	44-361	HIGH SPEED MIXTURE SCREW PACKING	1
33	29-224	THROTTLE SHAFT CLIP	1
35	15-C19	THROTTLE SHAFT CLIP RETAINING SCREW	1
36	24-B381	THROTTLE RETURN SPRING	1
37	14-A119	THROTTLE SHUTTER	1
38	15-C105	THROTTLE SHUTTER SCREW	2
42A	13-B220A	THROTTLE SHAFT	1
42B	13-B220B	THROTTLE SHAFT	1
43	12-1220	THROTTLE LEVER ASSEMBLY	1
44	15-C52	THROTTLE LEVER RETAINING SCREW	1
51	363-318	IDLE NOZZLE	1
54	80-160	MAIN PLUG	2
55	136-562	CABLE BRACKET	1
56	15-C67	CABLE BRACKET RETAINING SCREW	2
57	15-C9	LIMITER SCREW	2
58	24-B131	LIMITER SPRING	2
60	81-377	CARBURETTOR MOUNTING NUT	2
	RK-1HW	REPAIR KIT	
	DG-4HW	DIAPHRAGM & GASKET (STANDARD)	
	233-721P	INLET NEEDLE & SEAT SET	
* INDICATES CONTENTS OF REPAIR KIT			
* + INDICATES CONTENTS OF DIAPHRAGM & GASKET SET			



Introducing the X125T-MX, bringing TaG racing to the next level. This next-gen TaG engine allows for more power, less vibration, Internal water pump, 15500 rev limiter, built-in hour meter, and one-piece pipe. It will be available in a junior or a senior configuration, with restriction at the manifold. The ever-popular Tillotson HL334A/HL334AB (23mm) carburetor will be used for Senior while the Tillotson 27mm will be used for Heavy/Masters (and the Tryton 27mm allowed regionally). The accessories included are radiator, radiator cover, radiator mounting brackets, dampeners, airbox (with boot and clamp), wiring harness, pipe and battery box (with fixing hardware).

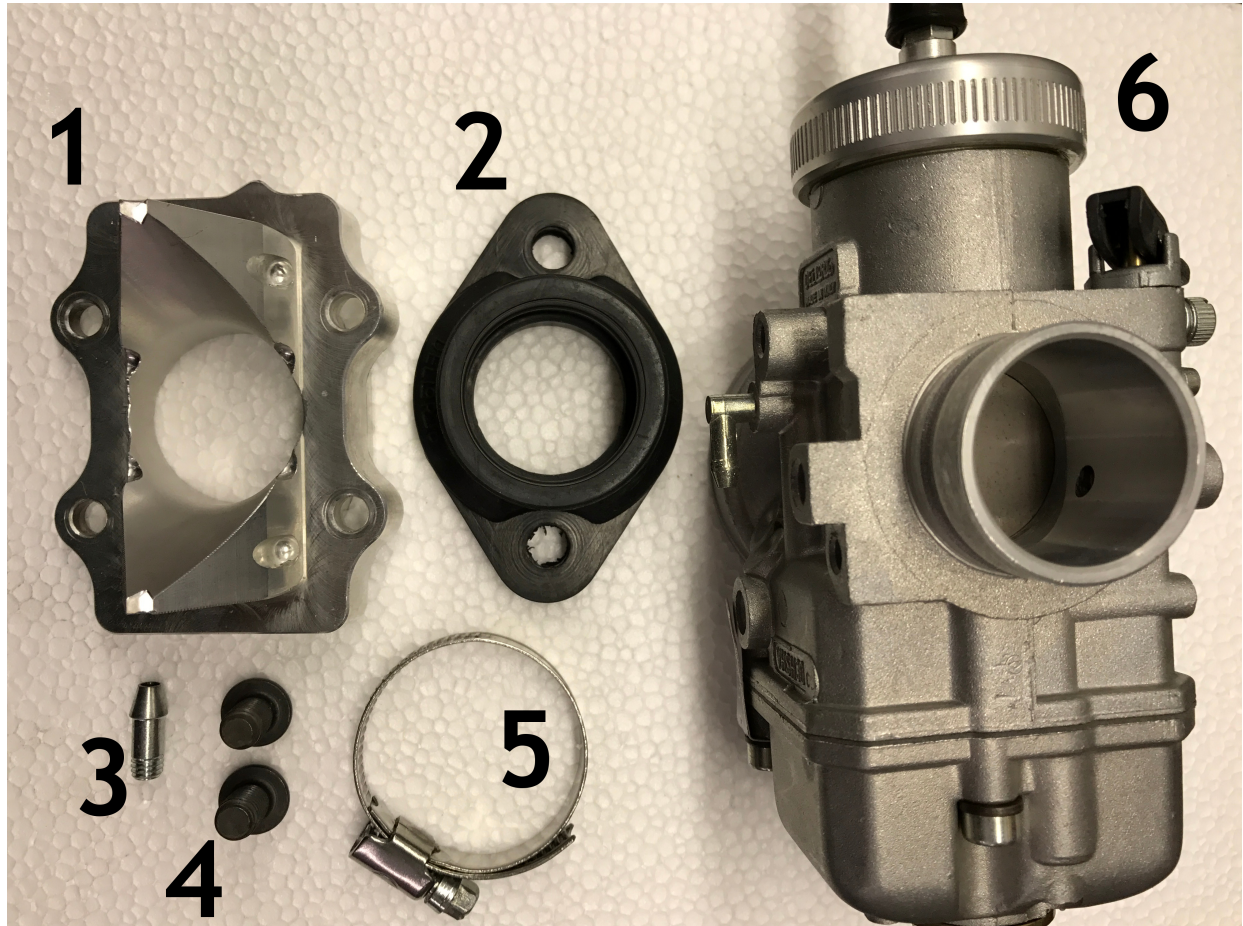
Running/mounting instructions

- Fuel mixture 16:1 or 6%
- Carb settings for Tryton HB27- L 1¼ H 1¼
- Carb settings for Tillotson HL334AB – L 1¾ H1
- Carb settings for Tillotson X125T 27mm – L 1¾ H1
- Please note that you may require an engine plate if your motormount does not have a cut out on the back. Part# A-120800A
- Case comes without oil, PLEASE check prior to running. Requires 20cc or 20ML Recommended Part #:00601
- Rev Limiter 15500
- Spark plug BR10EG
- Output = 30hp
- Target EGT 1050-1100

****We recommend checking your gear lube level before any event, and replace oil after 20 hours.**



X125T Dellorto Option



#1	A12.1764191	Intake Manifold
#2	A90.2990000	Intake Rubber Manifold Boot
#3	A12.1433500	Pulse Fitting
#4	A98.2202452	M8x14 Bolt
#5	A98.1790000	35/50 Steel Band
#6	24034	VHSH30 Dellorto Carb